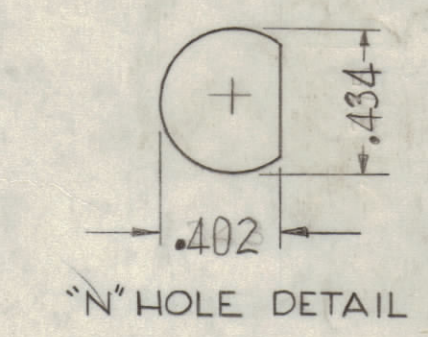
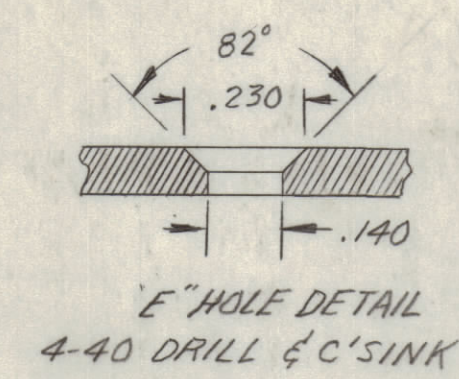
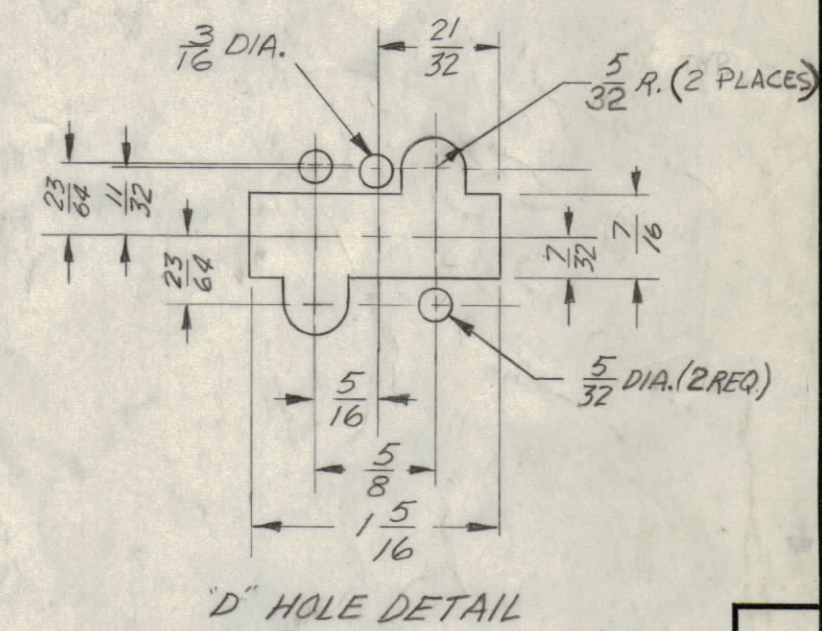
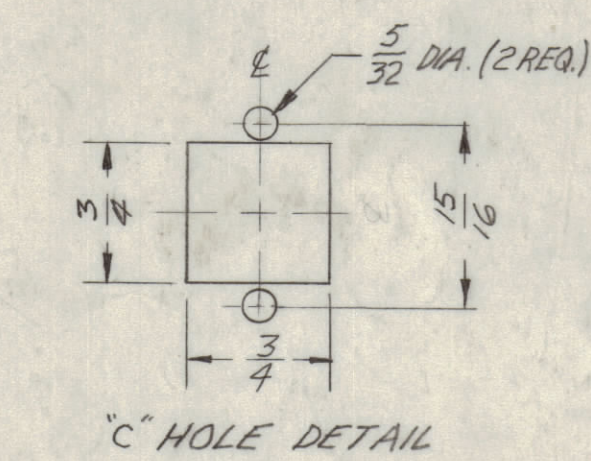
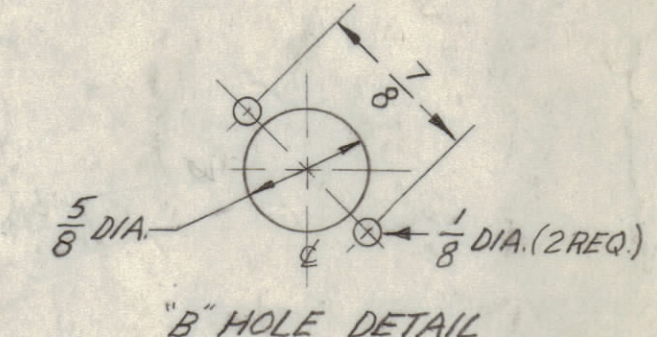
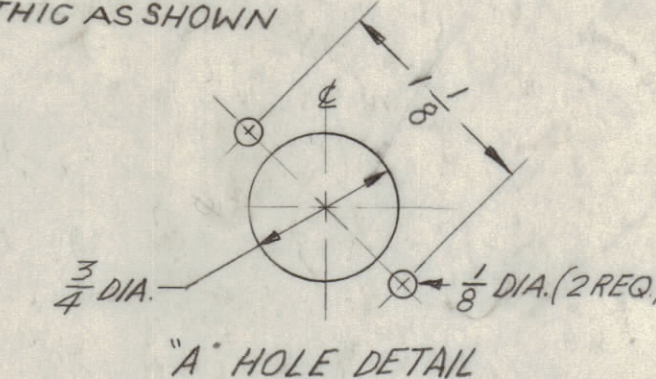


NOTICE TO PERSONS RECEIVING THIS DRAWING

THE TECHNICAL MATERIEL CORPORATION claims proprietary right in the material disclosed herein. This drawing is issued in confidence for engineering information only and may not be reproduced or used to manufacture anything shown hereon without permission from THE TECHNICAL MATERIEL CORPORATION to the user. This drawing is loaned for mutual assistance and is subject to recall at any time.

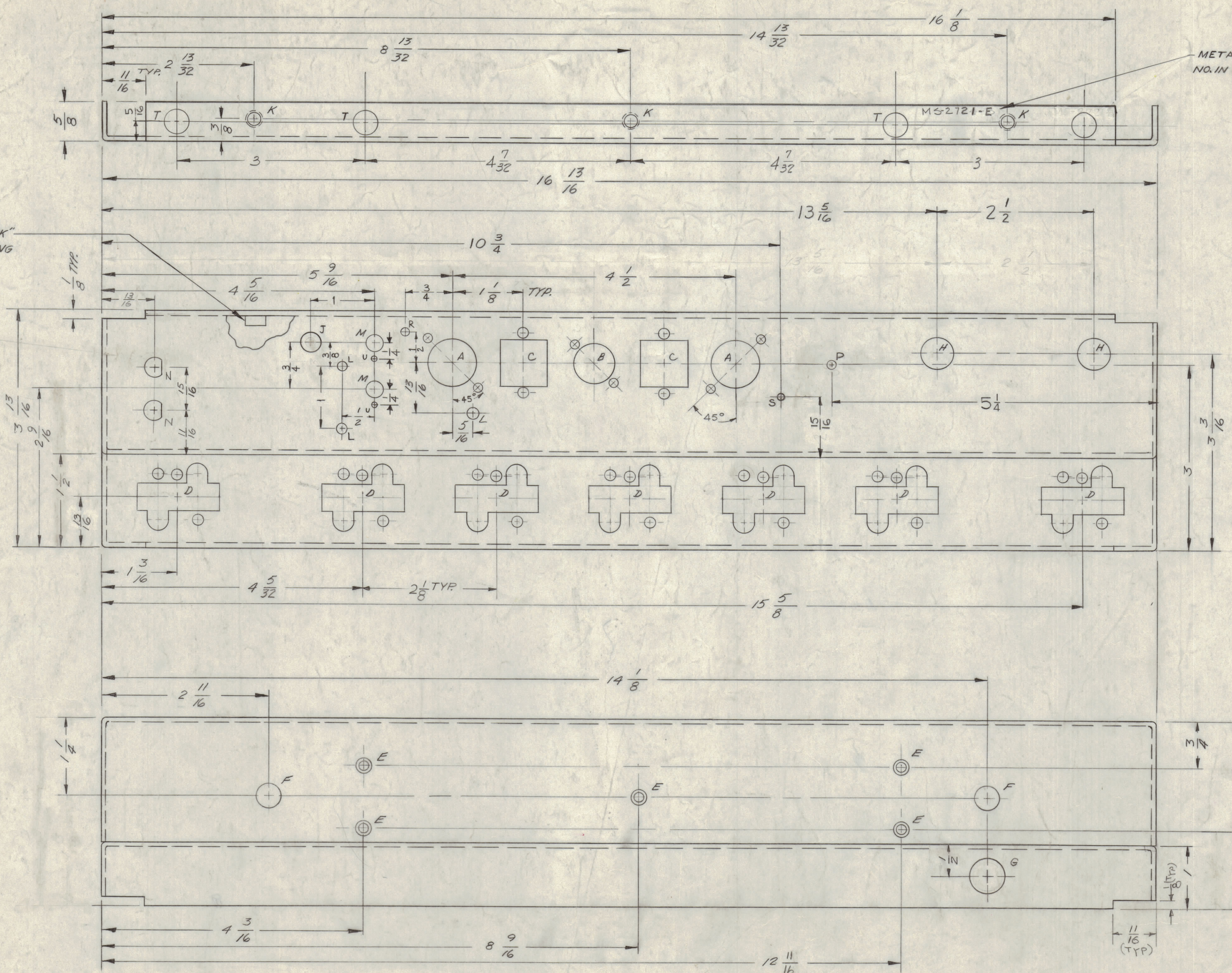
Property of:
THE TECHNICAL MATERIEL CORPORATION
MAMARONECK, NEW YORK

METAL STAMP TMC PART
NO. IN 1/8" HIGH 60THIC AS SHOWN



LEGEND		
HOLE	DESCRIPTION	REQ.
A	SEE DETAIL	2
B	SEE DETAIL	1
C	SEE DETAIL	2
D	SEE DETAIL	7
E	SEE DETAIL	5
F	3/8 DIA.	2
G	9/16 DIA.	1
H	1/2 DIA.	2
J	5/16 DIA.	1
K	.191 - .194 DIA.	9
L	.166 DIA.	3
M	1/4 DIA.	2
N	SEE DETAIL	2
P	.098 DIA.	1
R	1/8 DIA.	1
S	.120 DIA.	1
T	3/8 DIA.	4
U	3/32 DIA.	2

MOUNT ITEM 1 IN ALL "K" HOLES AFTER FINISHING



- A - (SEE DETAIL) 2 REQ.
- B - (SEE DETAIL) 1 REQ.
- C - (SEE DETAIL) 2 REQ.
- D - (SEE DETAIL) 7 REQ.
- E - (SEE DETAIL) 5 REQ.
- F - 3/8 DIA. 2 REQ.
- G - 9/16 DIA. 1 REQ.
- H - 1/2 DIA. 2 REQ.
- J - 5/16 DIA. 1 REQ.
- K - .191 - .194 DIA. 9 REQ.
- L - .166 DIA. 3 REQ.
- M - 1/4 DIA. 2 REQ.
- N - SEE DETAIL 2 REQ.
- P - .098 DIA. 1 REQ.
- R - 1/8 DIA. 1 REQ.
- S - .120 DIA. 1 REQ.
- T - 3/8 DIA. 4 REQ.
- U - 3/32 DIA. 2 REQ.

USE MATERIAL THICKNESS FOR MAX. RADIUS ON ALL BENDS UNLESS OTHERWISE SPECIFIED

UNLESS OTHERWISE SPECIFIED DIMENSIONS ARE IN INCHES AND INCLUDE CHEMICALLY APPLIED OR PLATED FINISHES

DECIMALS	FRACTIONS
± .005	± 1/64
± .01	± 1/32
± .008	± 1/32

UNLESS OTHERWISE SPECIFIED:		SCALE	
DIMENSIONS ARE IN INCHES		MAXIMUM ALLOWABLE TOLERANCES HAVE BEEN DETERMINED AND ANY DEVIATIONS WILL BE CAUSE FOR REJECTION. REMOVE ALL BURRS & SHARP EDGES	
TOLERANCES ON FRACTIONS ± 1/64		DECIMALS ± .005	
ANGLES ± 1/2°			

REQ. UNIT	MODEL	SECTION	ASSY. NO.	DATE	FINISH & SPEC. NO.	ELEC. DES. APP.	MECH. DES. APP.	SHEET OF
1	HFI-1			7-24-62	5052-H32	WA	J.P.	MS-2721
MATERIAL						ALUMINUM		
MATERIAL						5052-H32		
TYPE & TEMPER						S404 - YEL IRIDITE		
MATERIAL						M. GELLMAN		
DESCRIPTION						THE TECHNICAL MATERIEL CORP. MAMARONECK, NEW YORK		
PART NO.						NT129-6-32-4		
SYMBOL						K		