

THE CONTENTS OF THIS DRAWING ARE THE EXCLUSIVE PROPERTY OF THE TECHNICAL MATERIEL CORP. ITS UNAUTHORIZED USE OR REPRODUCTION IN WHOLE OR IN PART IS STRICTLY FORBIDDEN.

REQ. PER UNIT

2

MODEL

KIT-113

USED ON

ASS'Y. NO.

DATE

10-13-61

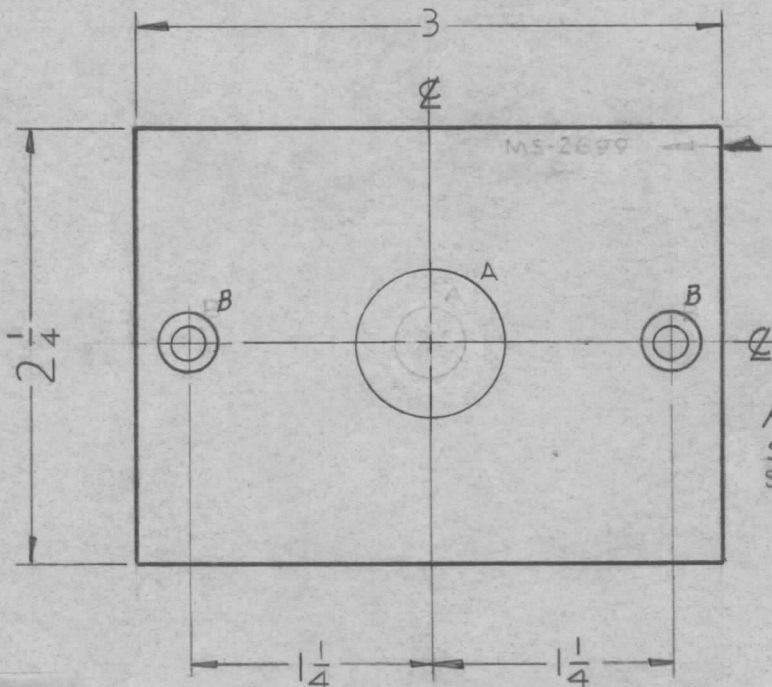
MS-2699 A

HOLE REREQ'D.

A - $\frac{3}{4}$ DIA. ——— 1

B - ϕ -32 DRILL & C'SINK - 2

FINISH:
S-404 Yellow Iridite - All Over
S-115 Smooth Gray Enamel - All Edges & Front.



Metal Stamp TMC Part No. MS-2699
 $\frac{1}{8}$ " High Gothic On Rear of Panel.

FINISH
S-404 YELLOW IRIDITE - ALL OVER
S-115 SMOOTH GRAY ENAMEL - ALL EDGES & FRONT.

FRONT VIEW OF PANEL SHOWN

UNLESS OTHERWISE SPECIFIED DIMENSIONS ARE IN INCHES AND INCLUDE CHEMICALLY APPLIED OR PLATED FINISHES	
DECIMALS	FRACTIONS
.X ± .05	± 1/64
.XX ± .01	ANGLES
.XXX ± .005	± 0° 30'
TOLERANCES	

CUT HERE
GUARANTEED
2-66

REF. { LD-990
LD-991

REQ.	ITEM	PART NO.	DESCRIPTION				SYMBOL	
		.064	THE TECHNICAL MATERIEL CORP.					
		STOCK SIZE	MAMARONECK, NEW YORK					
A	"A" HOLE WAS $\frac{3}{8}$ DIA.	G12G3 9245	<i>RE</i>	<i>MS</i>	<i>Q/S</i>	ALUMINUM	PLATE, MOUNTING, SWITCH OUTPUT & SWR	
SYM	DESCRIPTION	DATE	CH. NO.	DRAFTS	CHECKER	ENG. APP.		
UNLESS OTHERWISE SPECIFIED: DIMENSIONS ARE IN INCHES		SCALE:		5052-H32				E. E.
TOLERANCES ON		MAXIMUM ALLOWABLE TOLERANCES HAVE BEEN DETERMINED AND ANY DEVIATIONS WILL BE CAUSE FOR REJECTION.		TYPE & TEMPER		HEATTREAT. SPEC.	DRAWN	
FRAC. ± 1/64 DEC. ± .005 ANGLES ± 1/2°		REMOVE ALL BURRS AND SHARP EDGES		SEE NOTE (S-115)			CHECKED	
				FINISH & SPEC. NO.		ELEC. DES. APP.	MECH. DES. APP.	
							FINAL APPROVAL	
							MS-2699 A	