

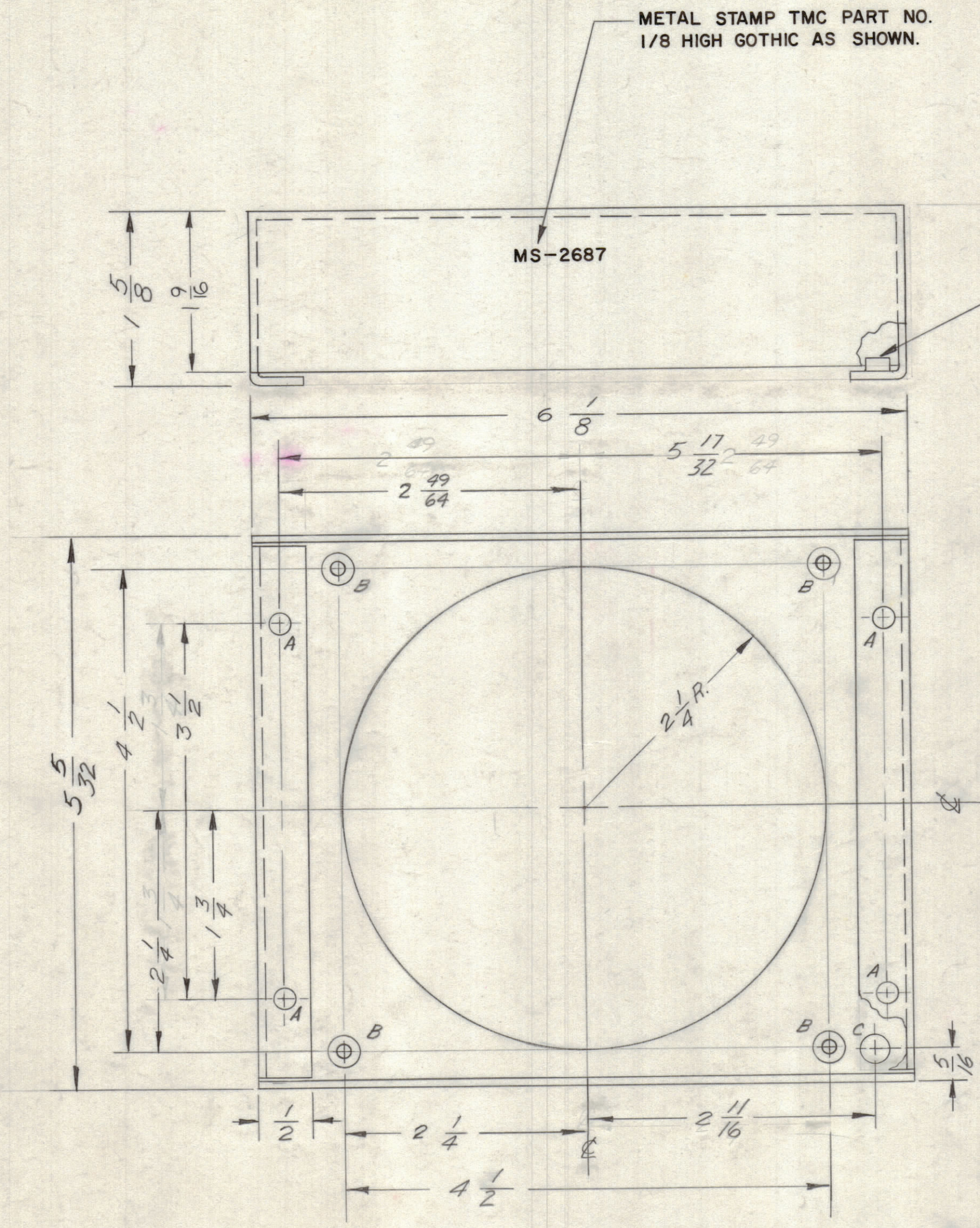
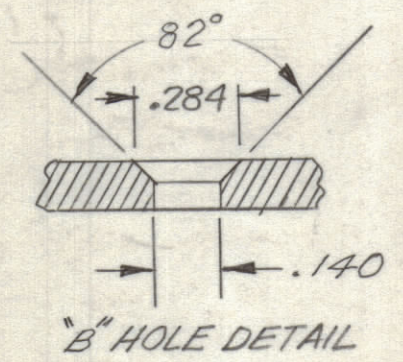
NOTICE TO PERSONS RECEIVING THIS DRAWING

THE TECHNICAL MATERIEL CORPORATION claims proprietary right in the material disclosed hereon. This drawing is issued in confidence for engineering information only and may not be reproduced or used to manufacture anything shown hereon without permission from THE TECHNICAL MATERIEL CORPORATION to the user. This drawing is loaned for mutual assistance and is subject to recall at any time.

Property of:
THE TECHNICAL MATERIEL CORPORATION
MAMARONECK, NEW YORK

HOLES:

- A - .191-.194 DIA. 4 REQ.
- B - (SEE DETAIL) 4 REQ.
- C - 1/4 DIA. 1 REQ.



7	6	5	4	3	2	1
A	F5	1 9/16 DIM. ADDED	10/16/63	10228		
SYM	ZONE	DESCRIPTION	DATE	CH. NO.	DRAFTS	CHECKER
UNLESS OTHERWISE SPECIFIED:			SCALE			
DIMENSIONS ARE IN INCHES			MAXIMUM ALLOWABLE TOLERANCES HAVE BEEN DETERMINED AND ANY DEVIATIONS WILL BE CAUSE FOR REJECTION. REMOVE ALL BURRS & SHARP EDGES			
TOLERANCES ON FRACTIONS ± 1/64			DECIMALS ± .005 ANGLES ± 1/2°			

UNLESS OTHERWISE SPECIFIED DIMENSIONS ARE IN INCHES AND INCLUDE CHEMICALLY APPLIED OR PLATED FINISHES

DECIMALS	FRACTIONS
.X ± .05	± 1/64
.XX ± .01	ANGLES ± 0° 30'
.XXX ± .005	

CUT HERE GUARANTEED 2.06

1	SBS-1	POWER SUPPLY	A-2209-2	10-13-61
REQ. PER UNIT	MODEL	SECTION	ASSY. NO.	DATE
USED ON				

4	1	NT129-0632-4	NUT, SWAGE TYPE	A
REQ. ITEM	PART NO.		DESCRIPTION	SYMBOL
	.051		THE TECHNICAL MATERIEL CORP. MAMARONECK, NEW YORK	
STOCK SIZE			CHASSIS, ELECTRICAL EQUIPMENT, BLOWER MOUNTING	
ALUMINUM			MATERIAL	
5052-H32			wh	JKW SPM
TYPE & TEMPER			HEAT TREAT. SPEC.	
S404 YEL. IRIDITE			RK	gwd
FINISH & SPEC. NO.			MS-2687	
ELEC. DES. APP.			MECH. DES. APP.	SHEET OF
			A	