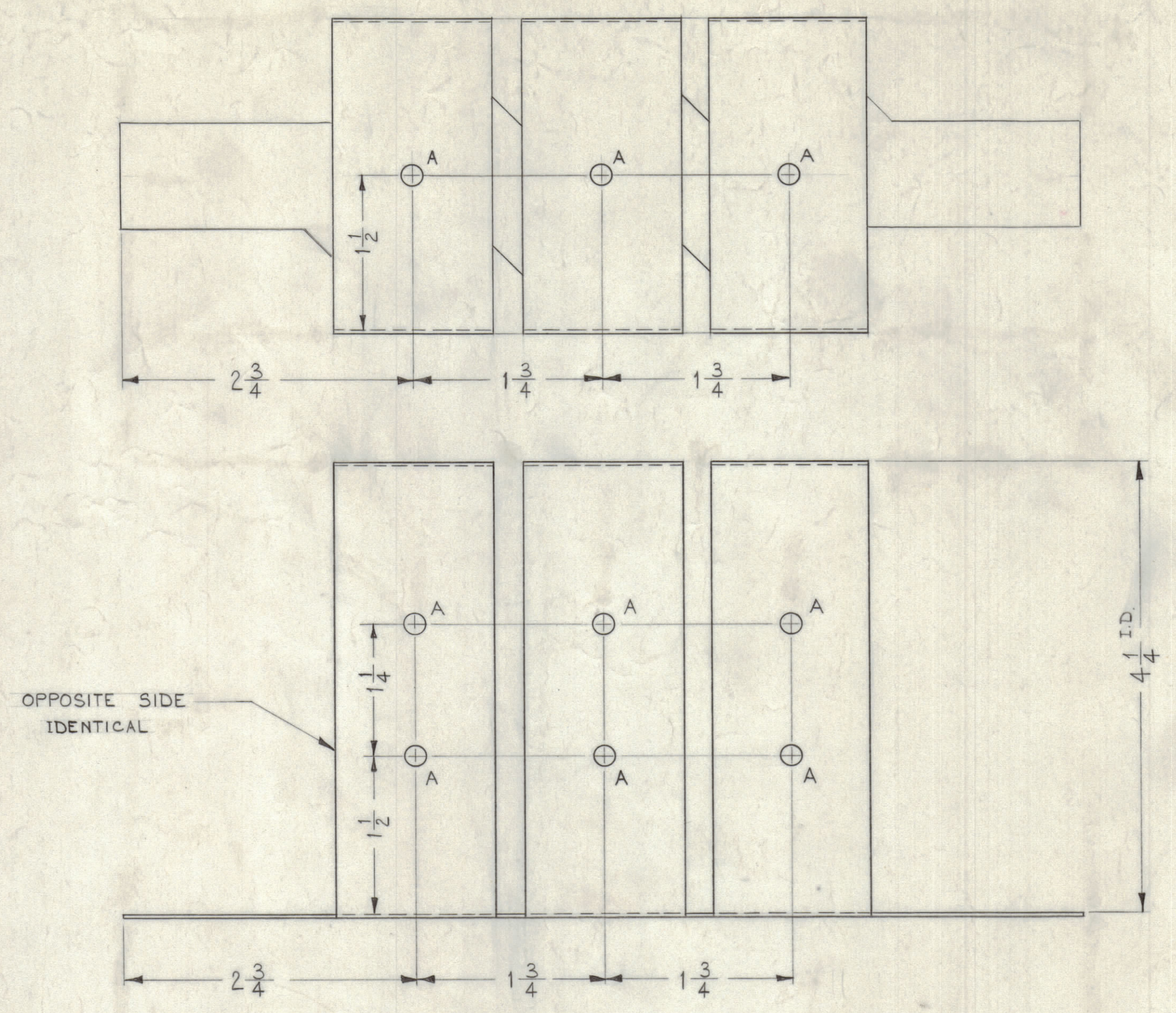
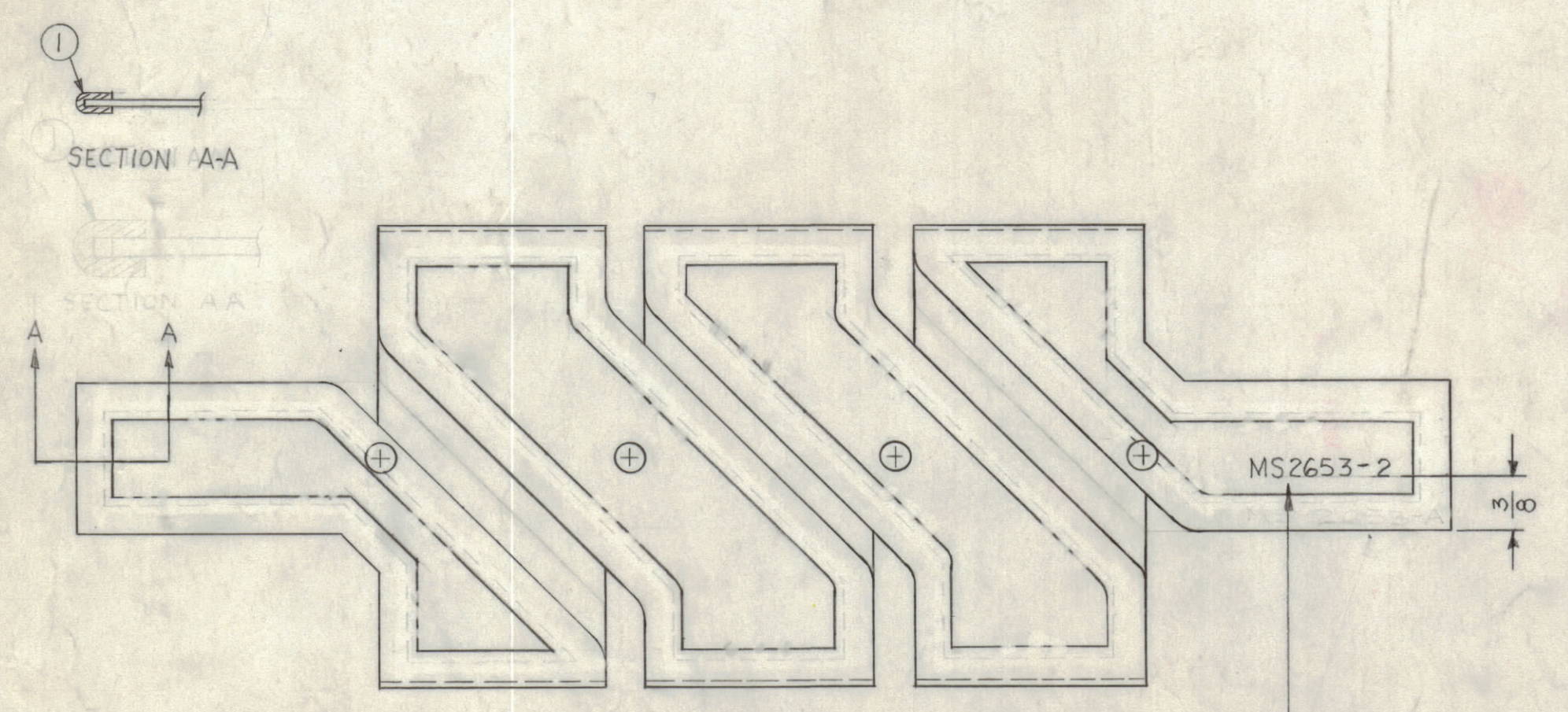


NOTICE TO PERSONS RECEIVING THIS DRAWING
 THE TECHNICAL MATERIEL CORPORATION claims proprietary right in the material disclosed hereon. This drawing is issued in confidence for engineering information only and may not be reproduced or used to manufacture anything shown hereon without permission from THE TECHNICAL MATERIEL CORPORATION to the user. This drawing is loaned for mutual assistance and is subject to recall at any time.
 Property of:
 THE TECHNICAL MATERIEL CORPORATION
 MAMARONECK, NEW YORK



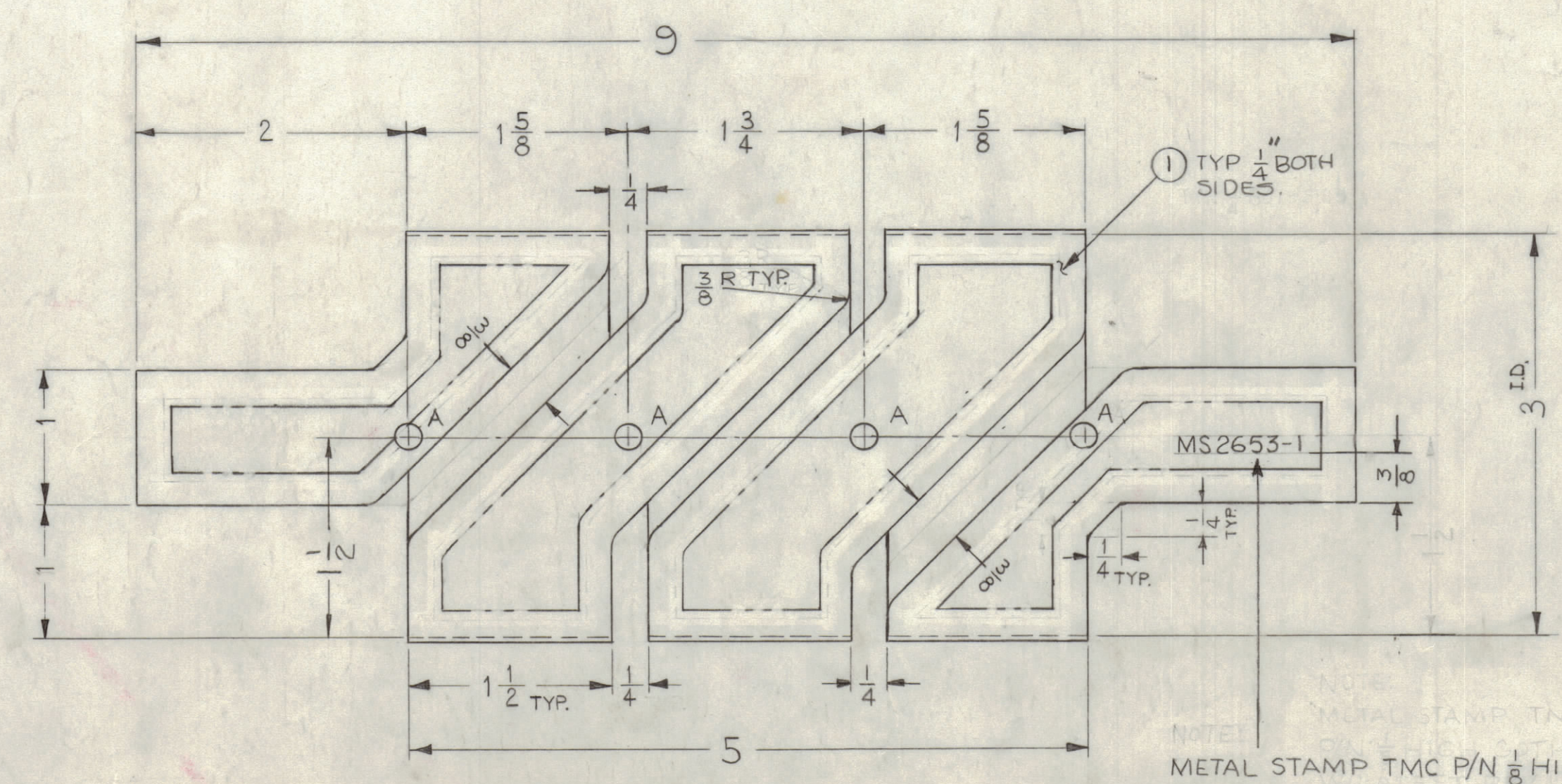
A = .191 DIA. 19 REQ.



CLOCKWISE
 MS-2653-2

NOTE: METAL STAMP TMC PART No. 1/8 HIGH GOTHIC W/LATEST REV. LETTER.

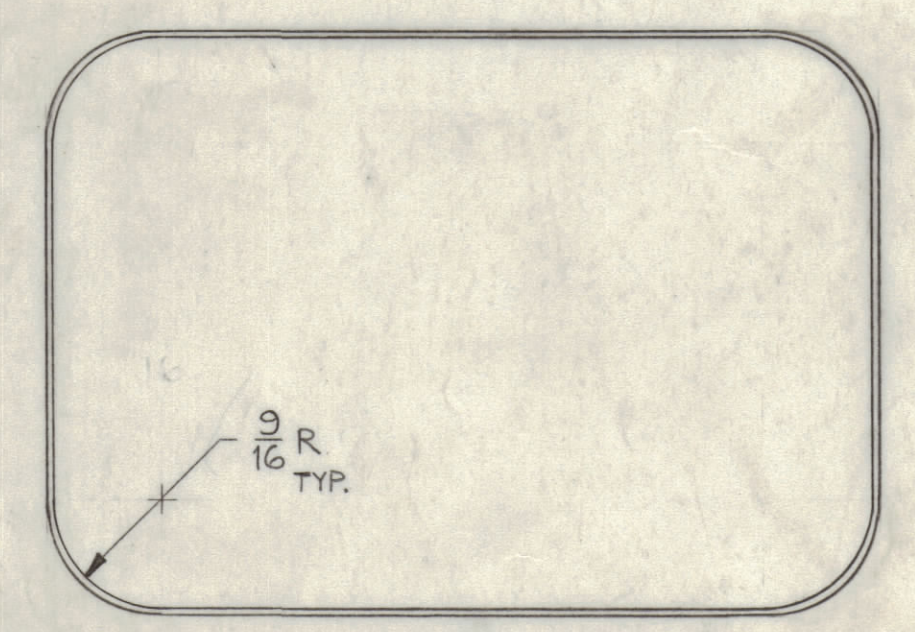
NOTE - ALL DIM. SAME AS ON COUNTER CLOCKWISE WINDING



COUNTER-CLOCKWISE
 MS-2653-1

NOTE: METAL STAMP TMC PART No. 1/8 HIGH GOTHIC W/LATEST REVISION LETTER.

NOTE: ROUND ALL CORNERS AND EDGES.



UNLESS OTHERWISE SPECIFIED DIMENSIONS ARE IN INCHES AND INCLUDE CHEMICALLY APPLIED OR PLATED FINISHES
 DECIMALS ± .05 FRACTIONS ± 1/64
 TOLERANCES ANGLES ± 30'

| | | | | | | |
|---------------|---|---------|---------|------------|------|---------|
| REG. ITEM | 2 | TRC-20K | SECTION | ASS'Y. NO. | DATE | 9-22-61 |
| REQ. PER UNIT | | | | | | |
| USED ON | | | | | | |

| | | | |
|-----------|-----|--------------------------|---------------------------------------------------|
| REG. ITEM | X 1 | TA113-3-500 | INS. TAPE, EL-GL |
| REQ. ITEM | | PART NO. | DESCRIPTION |
| | | .030 | THE TECHNICAL MATERIEL CORP. MAMARONECK, NEW YORK |
| | | STOCK SIZE | WINDING, PRIMARY |
| | | COPPER | |
| | | MATERIAL | |
| | | TYPE & TEMPER | HEAT TREAT, SPEC. |
| | | S245 SILVER PLATE BRIGHT | |
| | | FINISH & SPEC. NO. | ELEC. DES. APP. MECH. DES. APP. SHEET OF |

UNLESS OTHERWISE SPECIFIED: DIMENSIONS ARE IN INCHES
 TOLERANCES ON FRACTIONS ± 1/64 DECIMALS ± .005 ANGLES ± 1/2°
 MAXIMUM ALLOWABLE TOLERANCES HAVE BEEN DETERMINED AND ANY DEVIATIONS WILL BE CAUSE FOR REJECTION. REMOVE ALL BURRS & SHARP EDGES

MS-2653 B