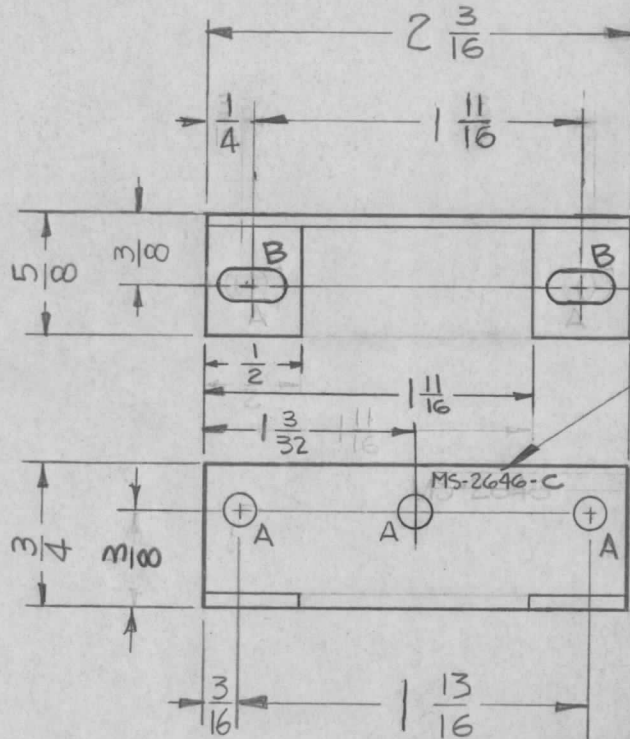


REQ. PER UNIT	USED ON			MS-2646 C
	MODEL	ASS'Y. NO.	DATE	
4	GPR-92		8-29-61	

A - .140 Dia. (3 Req.)  
 B - SLOT 1/64 x 11/32 (2 REQ)



METAL STAMP TMC  
 PART NO. 1/8 HIGH  
 GOTHIC AS SHOWN

USE MATERIAL THICKNESS FOR MAX. RADIUS  
 ON ALL BENDS UNLESS OTHERWISE SPECIFIED

C	-	2 "A" HOLES DELETED 2 "B" SLOTS ADDED	9-10-63	9906	JAZ	JLE	
	-	"SUPERSEDED" DELETED 3/8 DIM WAS .500					
B	1	REPLACED BY MS-3393 & MS-3394	6-17-63	9300	JAZ	JLE	
A	1	(1) "A" HOLE ADDED	2-9-63	8218	JAZ	JLE	
ISSUE	ITEM	CHANGED FROM	DATE	CH. NO.	DRAFTS	CHECKER	ENG. APP
TOLERANCES			SCALE: Do Not Scale				
DEC. DIM. ± .005			MAXIMUM ALLOWABLE TOLERANCES HAVE BEEN DETERMINED AND ANY DEVIATIONS WILL BE CAUSE FOR REJECTION.				
FRAC. DIM. ± 1/64			REMOVE ALL BURRS AND SHARP EDGES				
ANGULAR DIM. ±							

REQ.	ITEM	PART NO.	STRUMER	DESCRIPTION	SYMBOL
		.064		THE TECHNICAL MATERIEL CORP.	
		STOCK SIZE		MAMARONECK, NEW YORK	
		ALUMINUM		BRACKET, CAPACITOR MOUNTING	
		MATERIAL			
		5052-H32	RUZZO	JLE	JLE BP
		TYPE & TEMPER	DRAWN	CHECKED	FINAL APPROVAL
		5404 YELL IRIDITE	JMA	JLE	MS-2646 C
		FINISH & SPEC. NO.	ELEC. DES. APP	MECH/DES. APP	