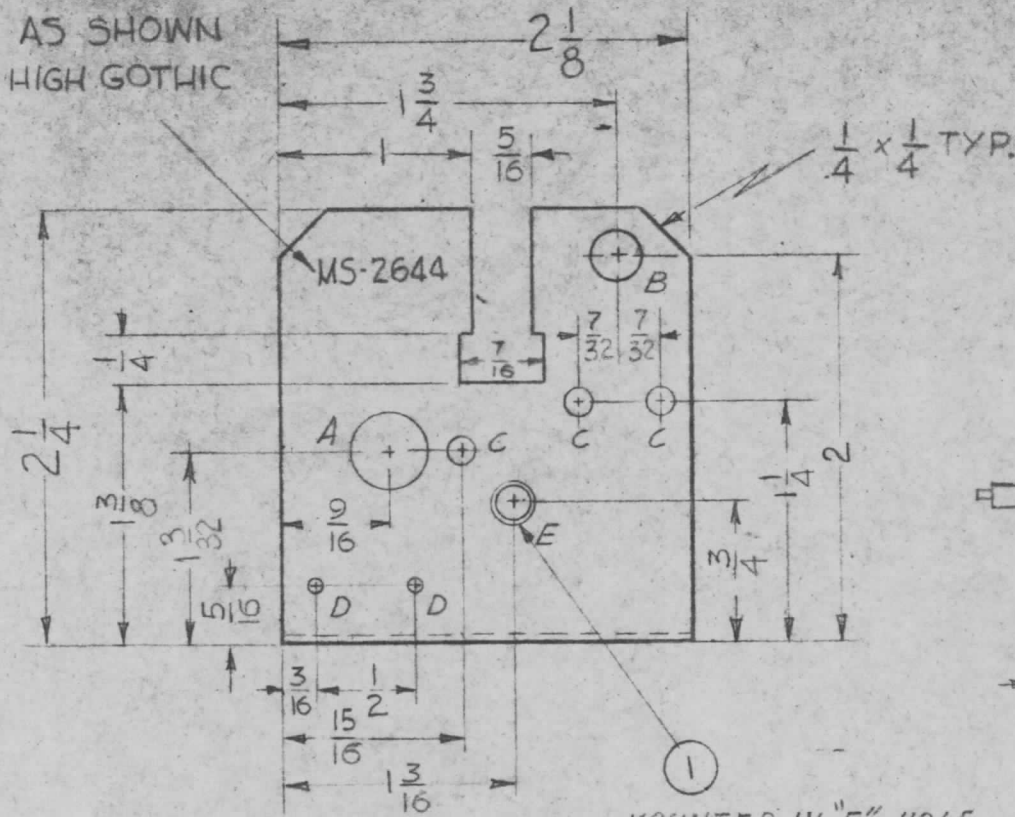


METAL  
STAMP TMC PART  
NO AS SHOWN  
1/8 HIGH GOTHIC

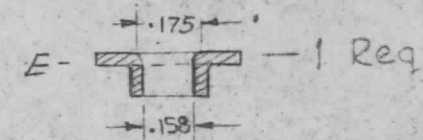
REQ. PER UNIT	USED ON		
	MODEL	ASS'Y. NO.	DATE
1	GPR-92	A2120	8-29-61

MS-2644



HOLES:

- A - 3/8 DIA. — 1 Req.
- B - 1/4 DIA. — 1 Req.
- C - 1/8 DIA. — 3 Req.
- D - 1/16 DIA. — 2 Req.



PUNCHED AND DRAWN HOLE

REVISED FEB 14 1963

USE MATERIAL THICKNESS FOR MAX. RADIUS  
ON ALL BENDS UNLESS OTHERWISE SPECIFIED

MOUNT INSERTS AFTER FINISHING

UNLESS OTHERWISE SPECIFIED  
DIMENSIONS ARE IN INCHES AND INCLUDE  
CHEMICALLY APPLIED OR PLATED FINISHES

DECIMALS	TOLERANCES	FRACTIONS
.X ± .05		± 1/64
.XX ± .01		ANGLES
.XXX ± .005		± 0° 30'

CUT HERE  
GUARANTEED  
2-66

						1	1	TE-169-1	FEED-THRU, TEFLON	E		
						REQ. ITEM	PART NO.		GELLMAN	DESCRIPTION	SYMBOL	
								.032	THE TECHNICAL MATERIEL CORP.			
								STOCK SIZE	MAMARONECK, NEW YORK			
								COPPER	BRACKET, COMPONENT MTG.			
								MATERIAL				
								COMMERCIAL	GDL			
								SOFT	JMA BP			
ISSUE ITEM						CHANGED FROM		DATE	CH. NO.	DRAFTS	CHECKER	ENG. APP.
TOLERANCES						SCALE:						
DEC. DIM. ±						MAXIMUM ALLOWABLE TOLERANCES HAVE BEEN DETERMINED AND ANY DEVIATIONS WILL BE CAUSE FOR REJECTION. REMOVE ALL BURRS AND SHARP EDGES						
FRAC. DIM. ±												
ANGULAR DIM. ±												
						FINISH & SPEC. NO.		ELEC. DES. APP	MECH. DES. APP	-MS-2644		