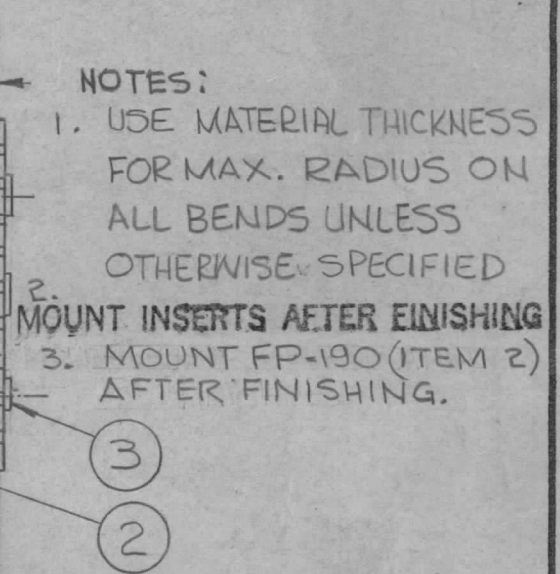
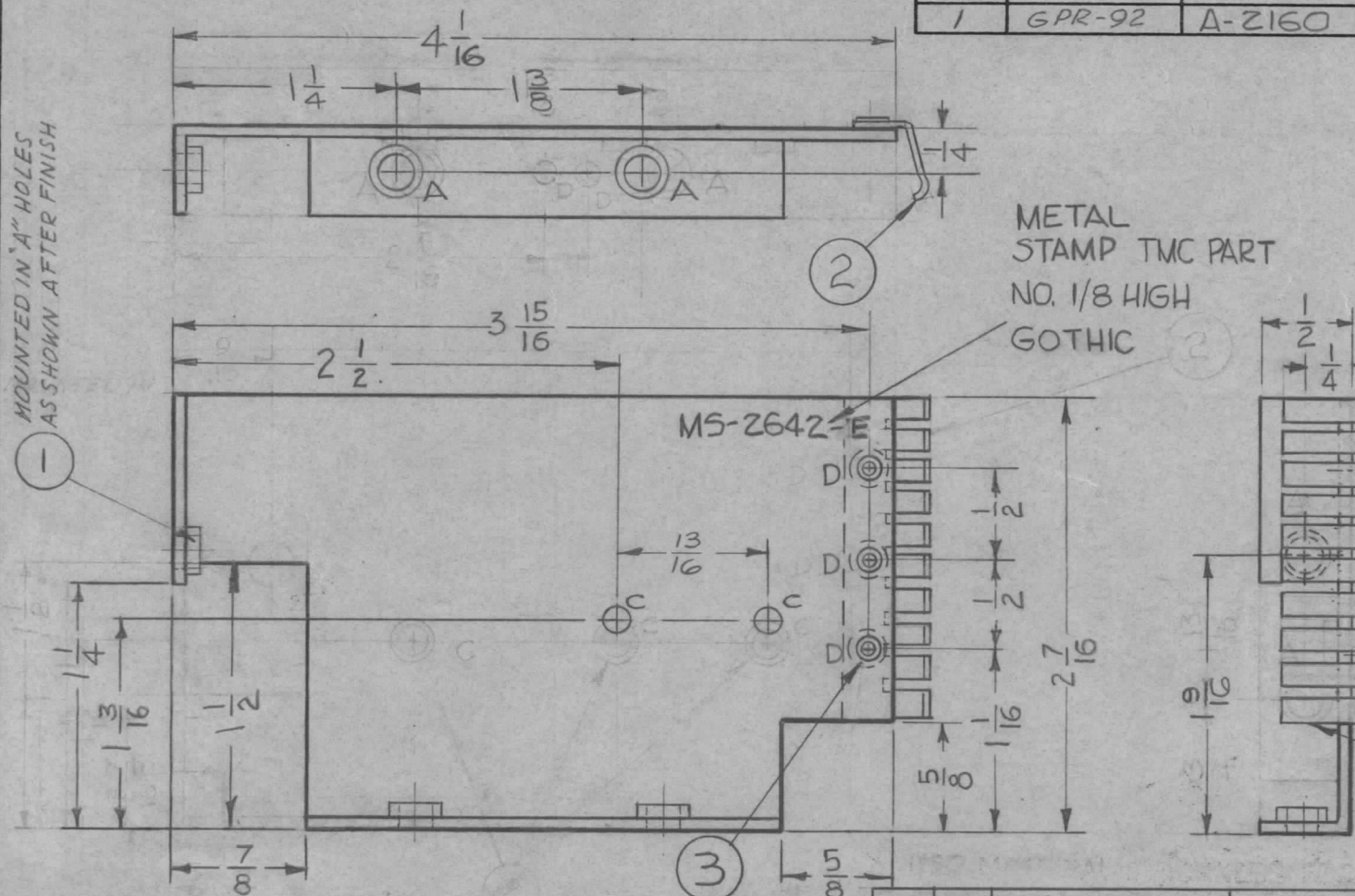


REQ. PER. UNIT	USED ON			MS-2642 E
	MODEL	ASS'Y. NO.	DATE	
1	GPR-92	A-2160	4-6-62	

HOLES:  
 A - .191-.194 DIA. 3 Req.  
 C - 9/64 DIA. 2 Req.  
 D - .128 DIA. 3 Req.

MOUNTED IN "A" HOLES AS SHOWN AFTER FINISH



NOTES:  
 1. USE MATERIAL THICKNESS FOR MAX. RADIUS ON ALL BENDS UNLESS OTHERWISE SPECIFIED  
 2. MOUNT INSERTS AFTER FINISHING  
 3. MOUNT FP-190 (ITEM 2) AFTER FINISHING.

E	CUTOUT WAS 7/8 X 7/8	6-20-67	18289	LAK.	<i>[Signature]</i>	RH
D	7/8 DIMS. WERE 3/4	9-6-63	9905	AL	<i>[Signature]</i>	<i>[Signature]</i>
C	ITEMS (2 & 3) & NOTE ADDED	8-7-63	9728	AL	<i>[Signature]</i>	LS
	7 DELETED 2 NT-129-440-4					
	6 ON "A" HOLES, 1/4 DIM WAS 1 3/8					
	5 ON "C" HOLES, 1 3/16 DIM WAS 1 1/16					
B	4 3/4 X 3/4 CUTOUT ADDED	6-14-63	9278	<i>[Signature]</i>	<i>[Signature]</i>	<i>[Signature]</i>
	3 "A" HOLES REQ WAS 4					
	2 ITEM (1) QTY WAS 4					
	1 "C" HOLES WERE .161-.164 DIA					
A	2 (1) "C" HOLE ADDED (1) "C" RELOCATED	3-5-63	8366	<i>[Signature]</i>	<i>[Signature]</i>	<i>[Signature]</i>
	1 (1) "B" HOLE .250 D, DELETED					

REQ.	ITEM	PART NO.	DESCRIPTION	SYMBOL
3	3	EY-100-1	EYELET, ROLLED FLANGE	
1	2	FP-190	CONTACT, GROUND	
3	1	NT-129-632-4	NUT, ROUND, SWAGE, TYPE	A

.064		THE TECHNICAL MATERIEL CORP.		
STOCK SIZE		MAMARONECK, NEW YORK		
ALUMINUM		SHIELD, IFO		
MATERIAL				

ISSUE	ITEM	CHANGED FROM	DATE	CH. NO.	DRAFTS	CHECKER	ENG. APP.
TOLERANCES			SCALE: NOT TO SCALE				
DEC. DIM. ±			MAXIMUM ALLOWABLE TOLERANCES HAVE BEEN DETERMINED AND ANY DEVIATIONS WILL BE CAUSE FOR REJECTION. REMOVE ALL BURRS AND SHARP EDGES				
FRAC. DIM. ±							
ANGULAR DIM. ±							

5052-H32	G.D.L.	<i>[Signature]</i>	<i>[Signature]</i>
TYPE & TEMPER	HEAT TREAT. SPEC.	DRAWN	CHECKED
5404 YELL. IRIDITE		<i>[Signature]</i>	<i>[Signature]</i>
FINISH & SPEC. NO.	ELEC. DES. APP	MECH. DES. APP	
			MS-2642 E