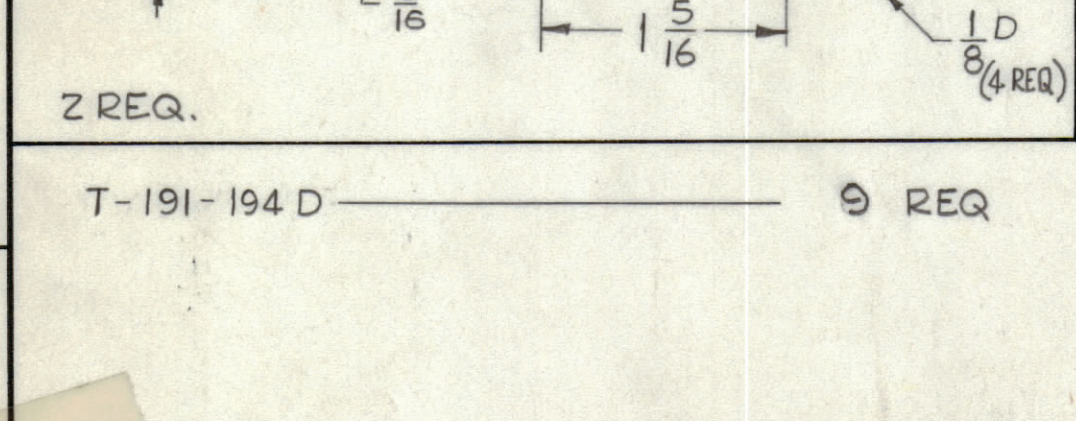
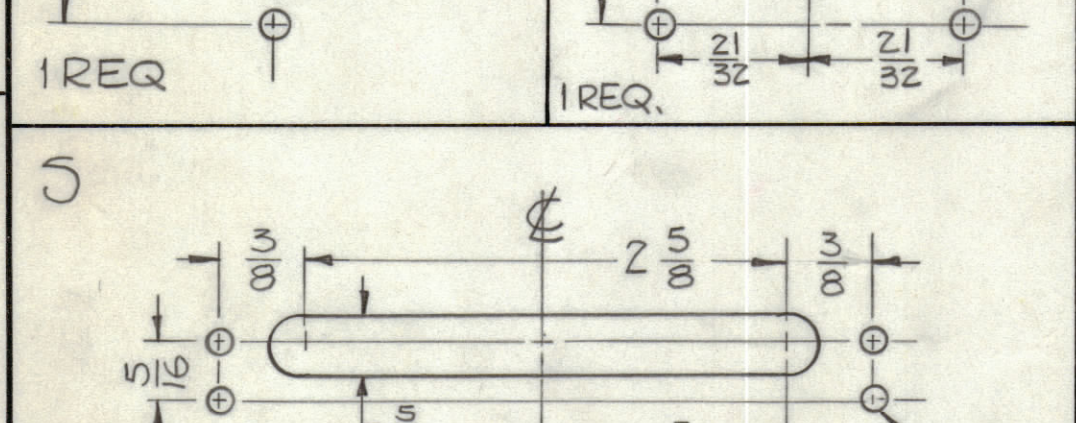
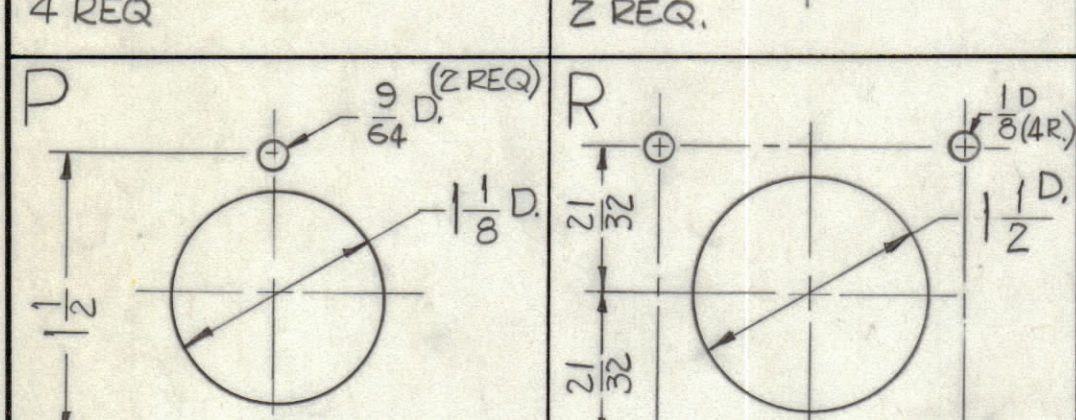
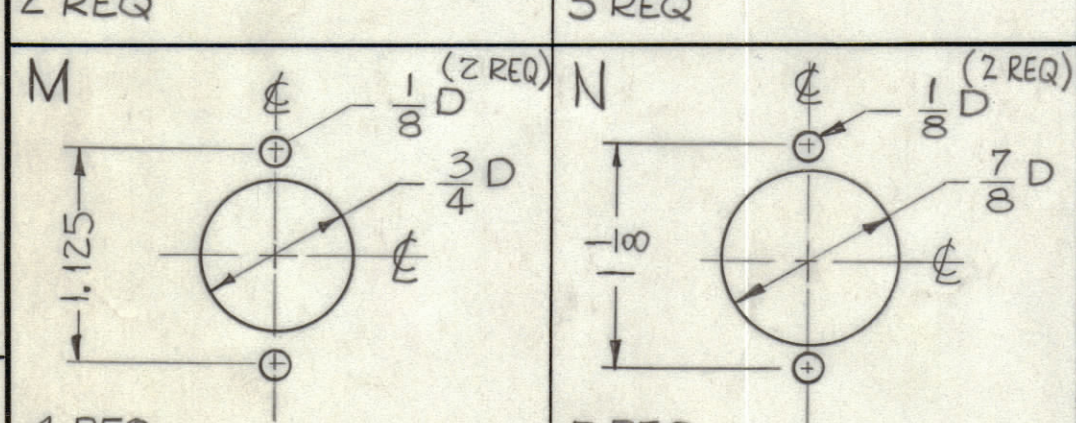
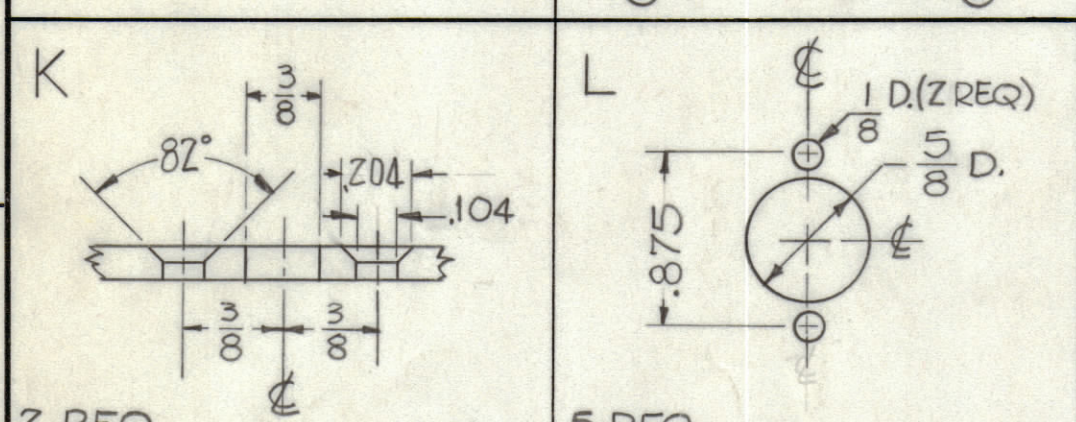
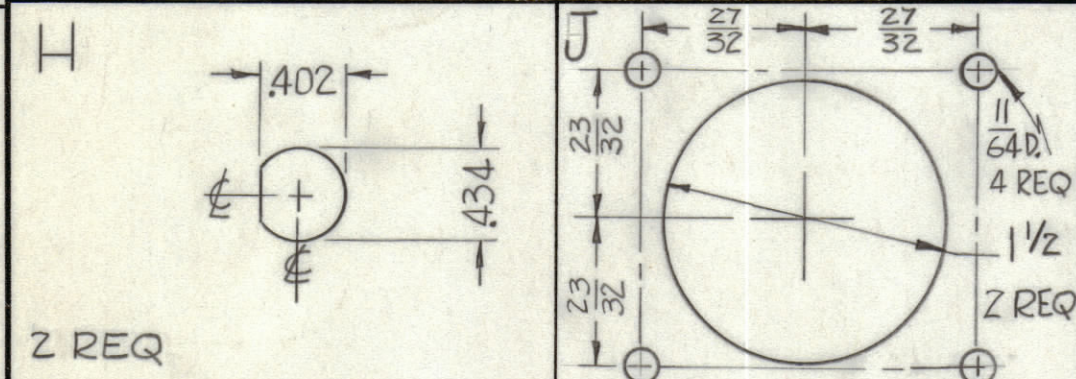
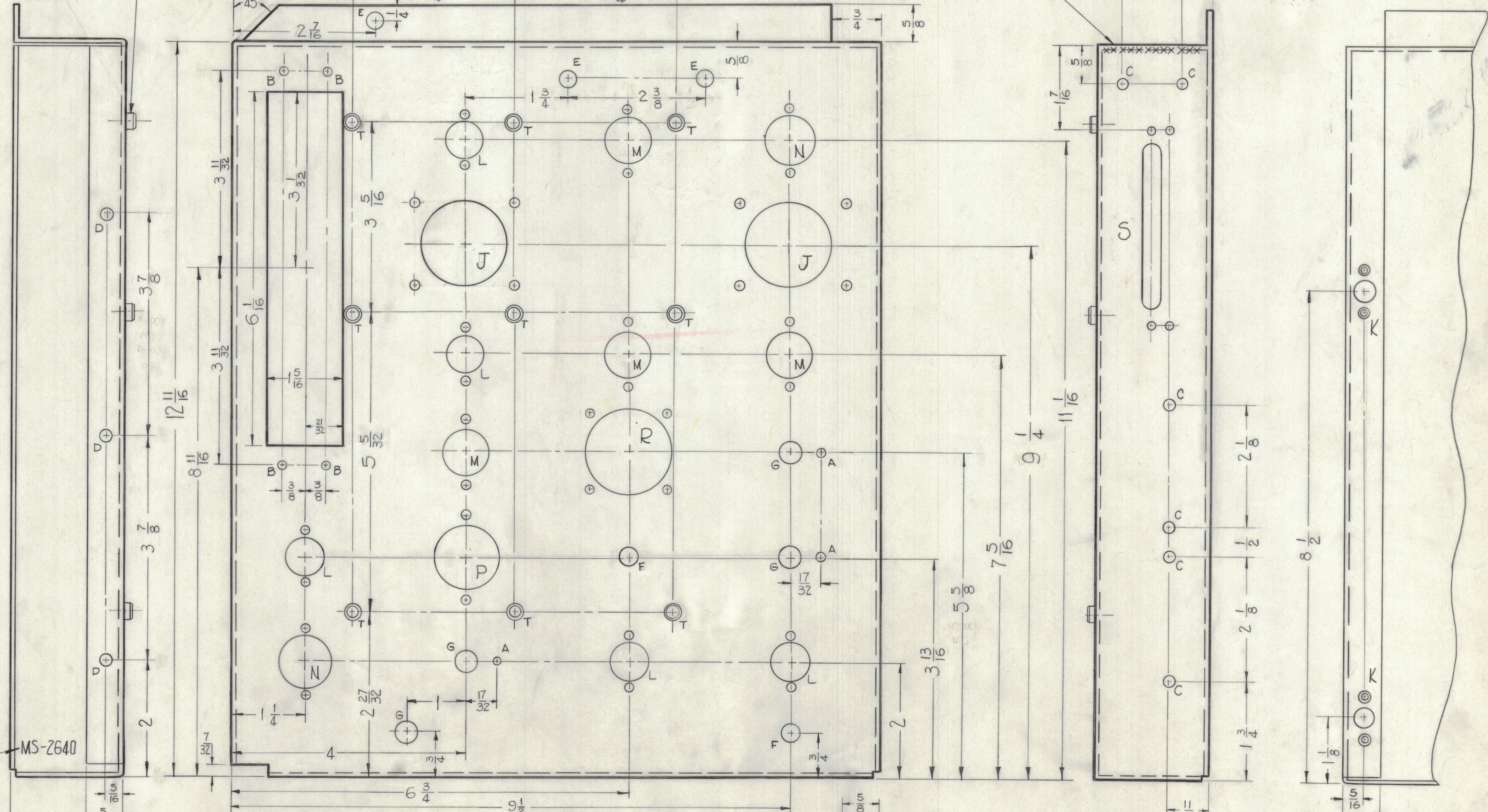


- A - 1/8 DIA. 3-REQ
- B - 9/64 DIA. 4-REQ
- C - 11/64 DIA. 6-REQ
- D - 13/64 DIA. 11-REQ
- E - 1/4 DIA. 3-REQ
- F - 5/16 DIA. 2-REQ
- G - 3/8 DIA. 4-REQ



MOUNT IN ALL HOLES AS SHOWN AFTER FINISH

WELD ALONG INSIDE EDGE, GRIND OUTER EDGE SMOOTH AFTER WELDING.



METAL STAMP TMC PART NO. AS SHOWN 1/8 HIGH GOTHIC

MS-2640

| | | |
|--|----------|---------------|
| UNLESS OTHERWISE SPECIFIED | DECIMALS | FRACTIONS |
| DIMENSIONS ARE IN INCHES AND INCLUDE CHEMICALLY APPLIED OR PLATED FINISHES | ± .005 | ± 1/64 |
| TOLERANCES | ± .005 | ± 1/64 |
| | | ANGLES ± 1/2° |

| | | | | | | | |
|--------------------------------|------|--|---------|--|--------|---------|-----------|
| SYMBOL | ZONE | DESCRIPTION | DATE | CH. NO. | DRAFTS | CHECKER | ENG. APP. |
| A | 1 | METAL STAMP NOTE ADDED, "H" HOLES WERE 6 | 8-24-61 | 54-91 | W.H. | KU | SPM |
| UNLESS OTHERWISE SPECIFIED: | | | | | | | |
| DIMENSIONS ARE IN INCHES | | | | SCALE | | | |
| TOLERANCES ON FRACTIONS ± 1/64 | | | | MAXIMUM ALLOWABLE TOLERANCES HAVE BEEN DETERMINED AND ANY DEVIATIONS WILL BE CAUSE FOR REJECTION. REMOVE ALL BURRS & SHARP EDGES | | | |

THE CONTENTS OF THIS DRAWING ARE THE EXCLUSIVE PROPERTY OF THE TECHNICAL MATERIEL CORP. ITS UNAUTHORIZED USE OR REPRODUCTION IN WHOLE OR IN PART IS STRICTLY FORBIDDEN.

USE MATERIAL THICKNESS FOR MAX. RADIUS ON ALL BENDS UNLESS OTHERWISE SPECIFIED

MOUNT INSERTS AFTER FINISHING Ref - LD-963

| | | | | |
|--------------------|---|--------------|-----------------------|---|
| REQ. ITEM | 9 1 | NT-129-632-4 | NUT ROUND, SWAGE TYPE | T |
| PART NO. | | | | |
| STOCK SIZE | .064 | | | |
| MATERIAL | ALUMINUM | | | |
| TYPE & TEMPER | 5052-H32 | | | |
| HEAT TREAT. SPEC. | S404 YELLOW IRIDIITE | | | |
| FINISH & SPEC. NO. | | | | |
| DESCRIPTION | THE TECHNICAL MATERIEL CORP. MAMARONECK, NEW YORK | | | |
| DESCRIPTION | MAIN CHASSIS | | | |
| DRAWN | R. UZZO | W.A.F. | | |
| CHECKED | | | | |
| FINAL APPROVAL | | | | |
| ELEC. DES. APP. | | | | |
| MCH. DES. APP. | | | | |
| SHEET | MS-2640 | | | A |
| OF | | | | |

| | | | | | | | |
|---------------|--------|---------|--|-----------|--|------|--------|
| MODEL | AFC-1B | SECTION | | ASSY. NO. | | DATE | 8-9-61 |
| REQ. PER UNIT | | USED ON | | | | | |

MS-2640