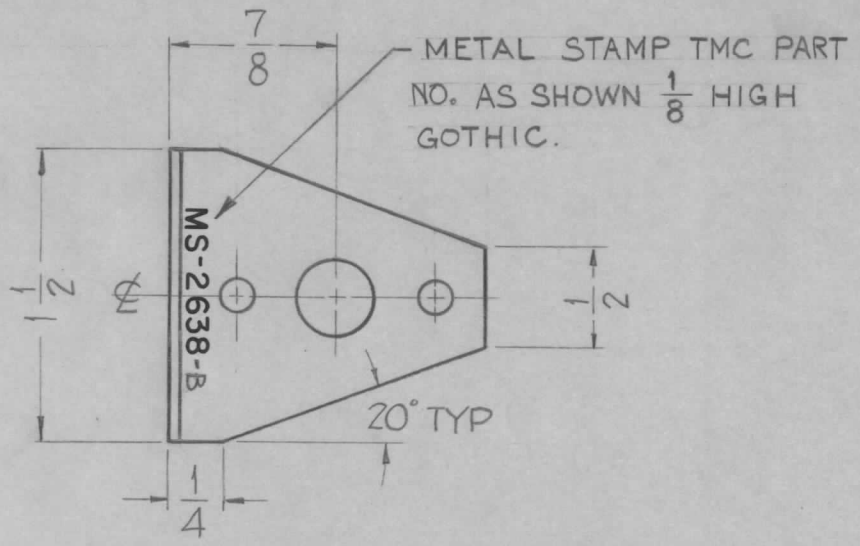


REQ. PER. UNIT	USED ON		
	MODEL	ASS'Y. NO.	DATE
1	GPE-1		8-3-61

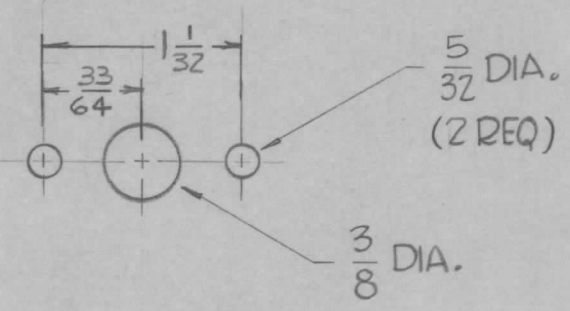
MS-2638 B



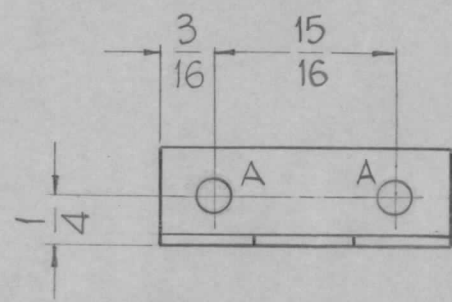
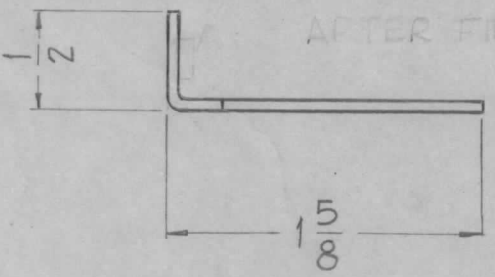
HOLES

A - 11/64 DIA. 2 REQ.

B - 1 REQ.



MOUNT IN ALL "A" HOLES AS SHOWN AFTER FINISH



REF - TMC DWG NO. LD-962 (1)

							# 1	<del>#</del>	NO.	DELETED						
							REQ. ITEM	PART NO.		DESCRIPTION	SYMBOL					
							.064		THE TECHNICAL MATERIEL CORP.							
							STOCK SIZE		MAMARONECK, NEW YORK							
B		ITEM (1) NT-129-632-4 DELETED	11-30-62	7750	<del>6.D</del>	<del>W.P.</del>	ALUMINUM		BRACKET, SWITCH							
		(2) "A" HOLES WERE .191-.194 DIA.														
A	2	ITEM (1) ADDED	11-9-61	5802	6.D	<del>W.P.</del>										
	1	HOLE "A" DIA WAS 5/32														
ISSUE	ITEM	CHANGED FROM	DATE	CH. NO.	DRAFTS	CHECKER	ENG. APP.	MATERIAL								
TOLERANCES			SCALE: - DO NOT SCALE -				5052-H32		John C. Biele	<del>W.P.</del>	FINAL APPROVAL					
DEC. DIM. ±			MAXIMUM ALLOWABLE TOLERANCES HAVE BEEN DETERMINED AND ANY DEVIATIONS WILL BE CAUSE FOR REJECTION. REMOVE ALL BURRS AND SHARP EDGES				TYPE & TEMPER		HEAT TREAT. SPEC.	DRAWN	CHECKED	FINISH & SPEC. NO.				
FRAC. DIM. ± 1/64							S404-IRIDITE								MS-2638 B	
ANGULAR DIM. ± 1/2°							FINISH & SPEC. NO.		ELEC. DES. APP		MECH. DES. APP					