

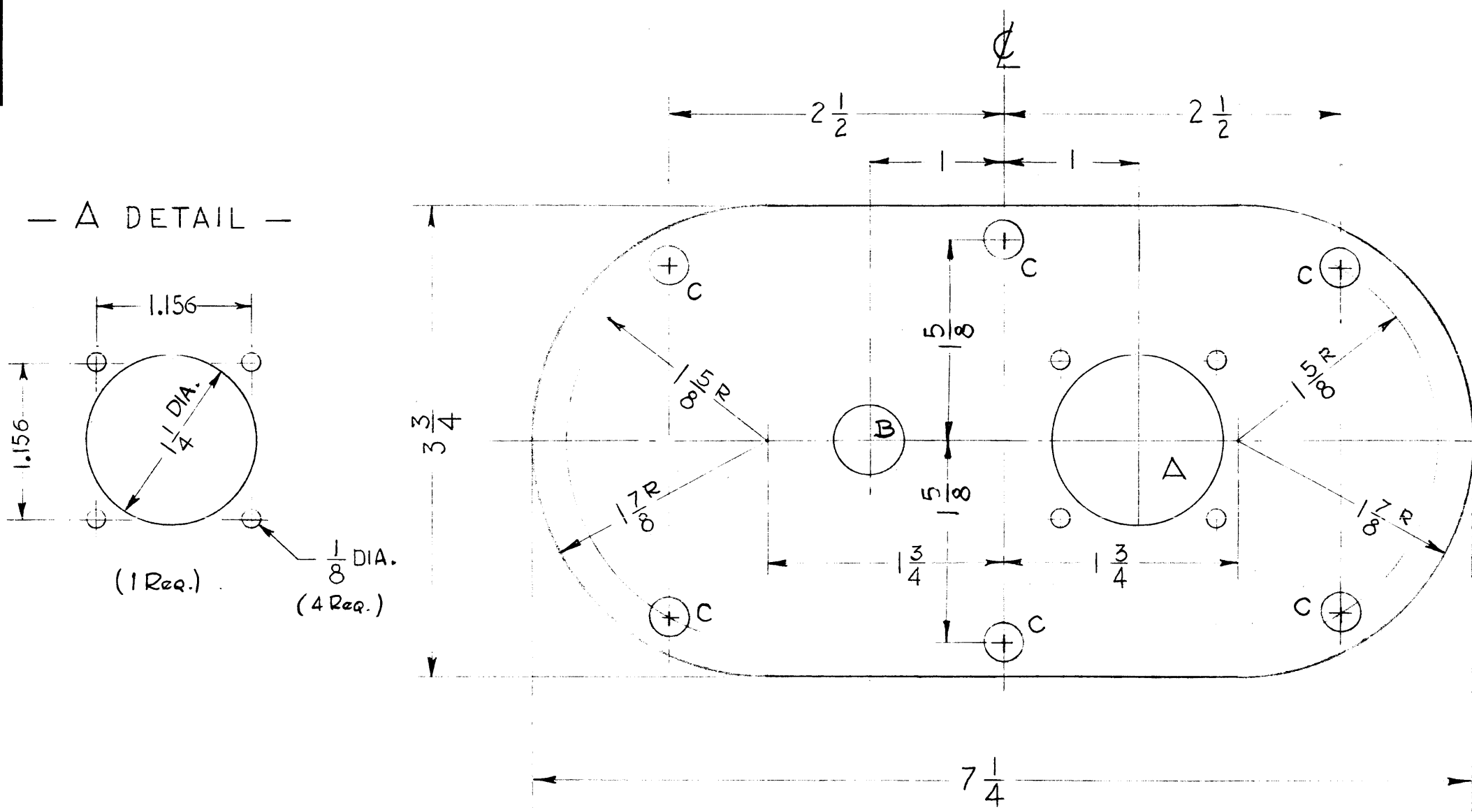
MS-2500

MATERIAL CODE	MATERIAL	PRIME OR DIP	FINISH
S	STEEL 14 GA.	5114 ZINC CHROM.	5220 TMC RCAF BLUE GRAY ENAMEL SMOOTH
A	ALUMINUM 126A-5052-H32		S404-IRIDITE

FINISH NOTE:

DEGREASE & PREPARE SURFACE
FOR FINISHES AS PER TABLE

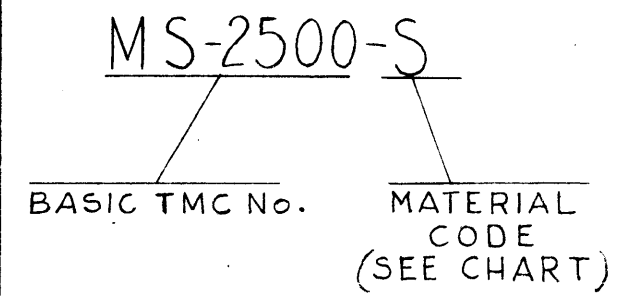
NOTE: OR PRIME AN PAINT TO CUSTOMERS SPEC.



HOLES -

- A - SEE DETAIL
- B - 1/2" DIA. 1 Req.
- C - 9/32 6 Req.

TMC PART # TO BE IN THE FOLLOWING FORM:



LD-888 (FOR KIT-1)
REF: LD-889 (FOR RAK-11B)

SYM	DESCRIPTION	DATE	CH. NO.	DRAFTS	CHECKER	ENG. APP.

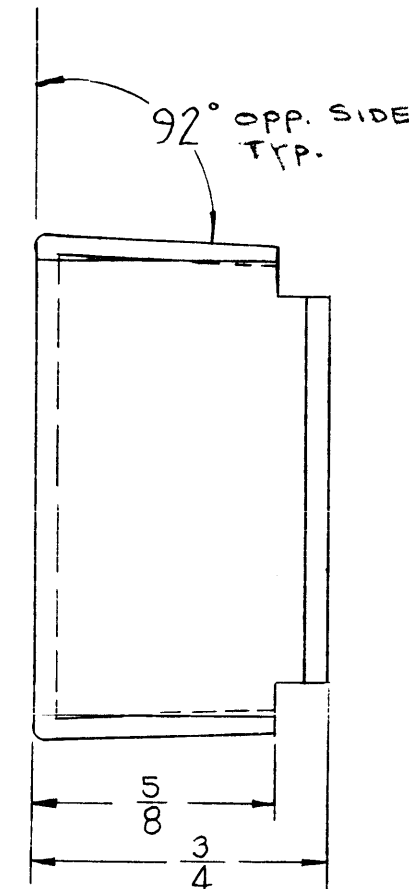
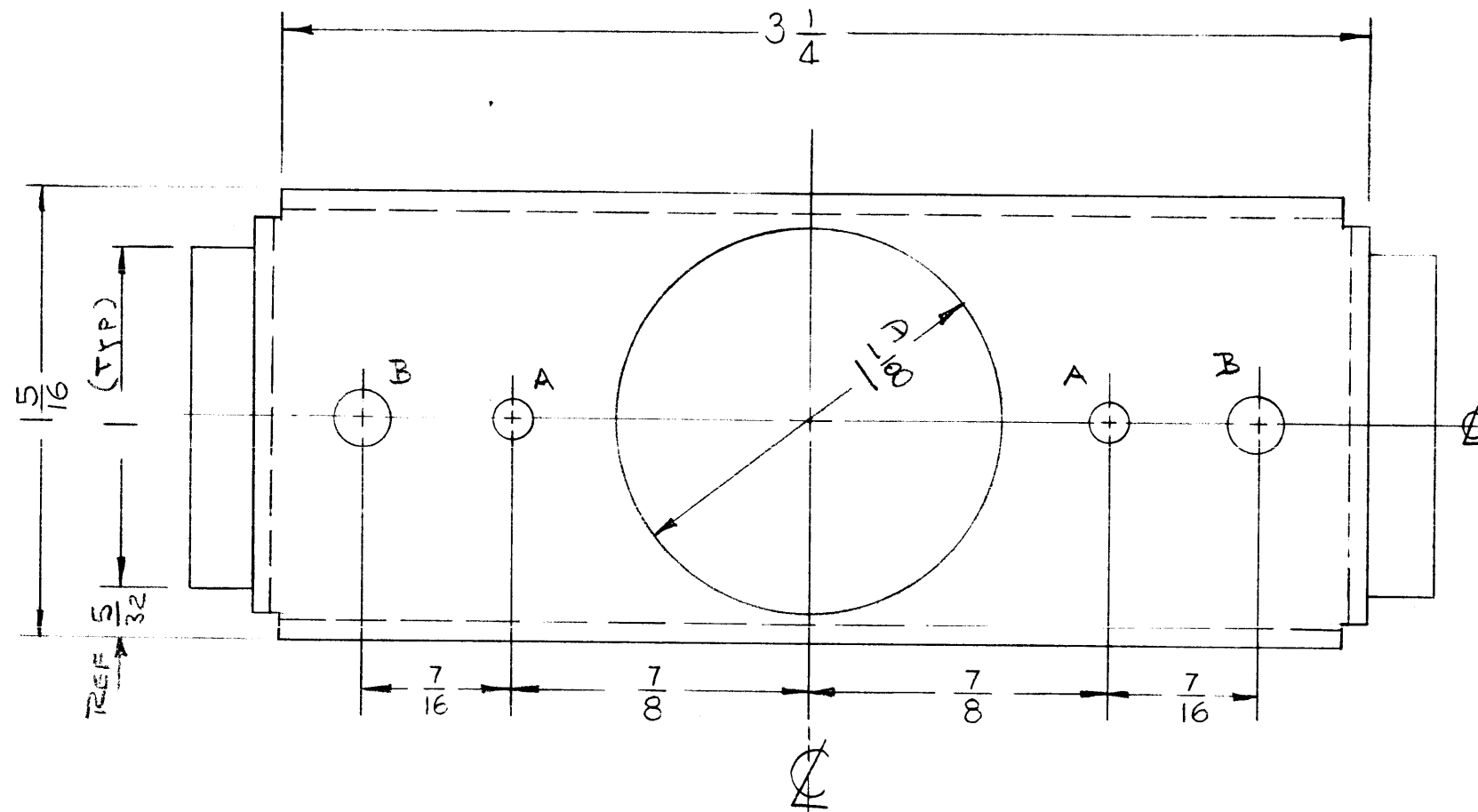
UNLESS OTHERWISE SPECIFIED:
DIMENSIONS ARE IN INCHES
TOLERANCES ON FRACTIONS ± 1/64 DECIMALS ± .005 ANGLES ± 1/20

SCALE: FULL, Do NOT SCALE
MAXIMUM ALLOWABLE TOLERANCES HAVE BEEN DETERMINED AND ANY DEVIATIONS WILL BE CAUSE FOR REJECTION.
REMOVE ALL BURRS AND SHARP EDGES

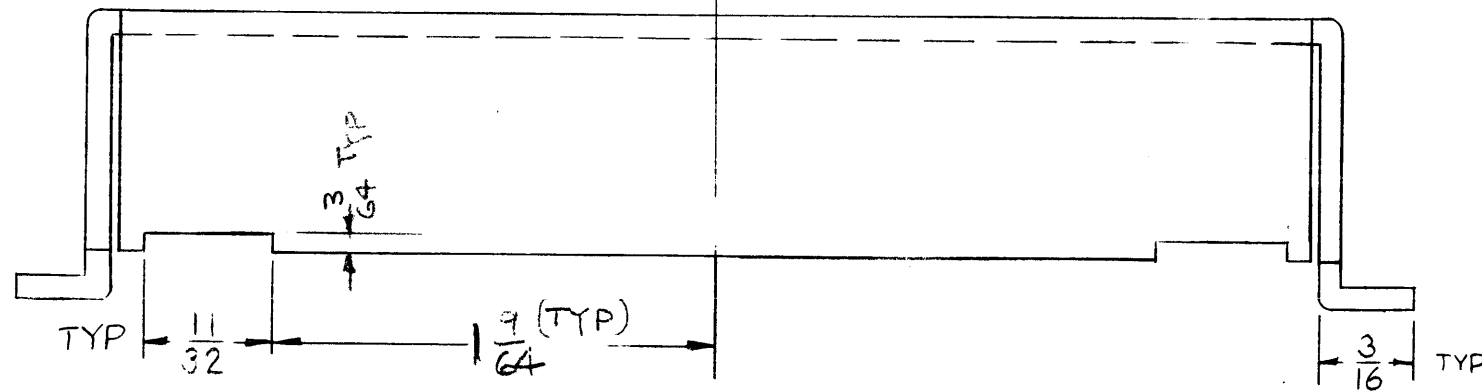
REQ. PER UNIT	MODEL	SECTION	ASS'Y. NO.	DATE
	SBT-1K(E)			1-6-61

REQ.	ITEM	PART NO.	DESCRIPTION	SYMBOL										
	SEE TABLE	SEE TABLE	THE TECHNICAL MATERIEL CORP. MAMARONECK, NEW YORK											
	SEE TABLE	SEE TABLE	MTG. PLATE, INTERCONNECTING CABLE											
			<table border="1"> <tr> <td>TYPE & TEMPER</td> <td>HEAT TREAT. SPEC.</td> <td>DRAWN</td> <td>CHECKER</td> <td>FINAL APPROVAL</td> </tr> <tr> <td>SEE NOTE & TABLE</td> <td></td> <td><i>DeLuca</i></td> <td><i>JoCiele</i></td> <td><i>[Signature]</i></td> </tr> </table>	TYPE & TEMPER	HEAT TREAT. SPEC.	DRAWN	CHECKER	FINAL APPROVAL	SEE NOTE & TABLE		<i>DeLuca</i>	<i>JoCiele</i>	<i>[Signature]</i>	
TYPE & TEMPER	HEAT TREAT. SPEC.	DRAWN	CHECKER	FINAL APPROVAL										
SEE NOTE & TABLE		<i>DeLuca</i>	<i>JoCiele</i>	<i>[Signature]</i>										
			ELEC. DES. APP. MECH. DES. APP.	MS-2500										

MS-2502



A ~ 1/8 2 REQ
 B ~ 11/64 2 REQ



~NOTE~
 USE MATERIAL THICKNESS FOR
 MAX. RADIUS ON BEND, UNLESS
 OTHERWISE SPECIFIED.

OPPOSITE SIDE
 IDENTICAL

SYM	DESCRIPTION	DATE	CH. NO.	DRAFTS	CHECKER	ENG. APP.
UNLESS OTHERWISE SPECIFIED: DIMENSIONS ARE IN INCHES TOLERANCES ON FRACTIONS ± 1/64 DECIMALS ± .005 ANGLES ± 1/2°		SCALE: DOUBLE SIZE MAXIMUM ALLOWABLE TOLERANCES HAVE BEEN DETERMINED AND ANY DEVIATIONS WILL BE CAUSE FOR REJECTION. REMOVE ALL BURRS AND SHARP EDGES				

REQ. PER UNIT	MODEL	SECTION	ASS'Y. NO.	DATE

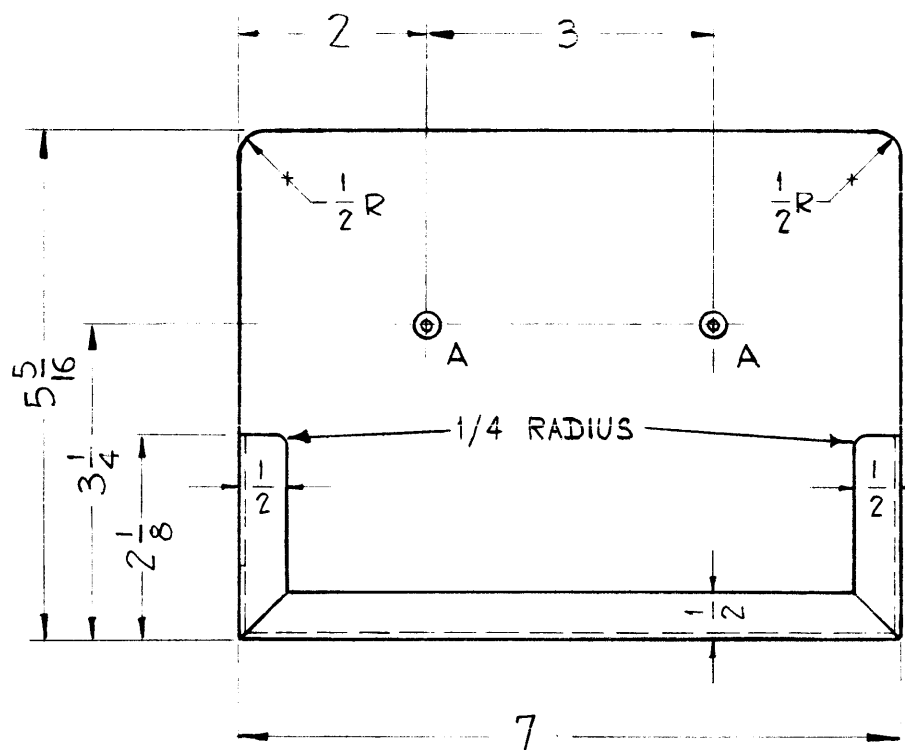
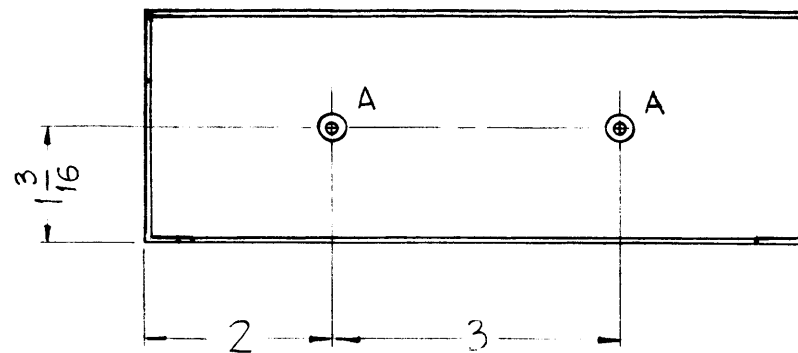
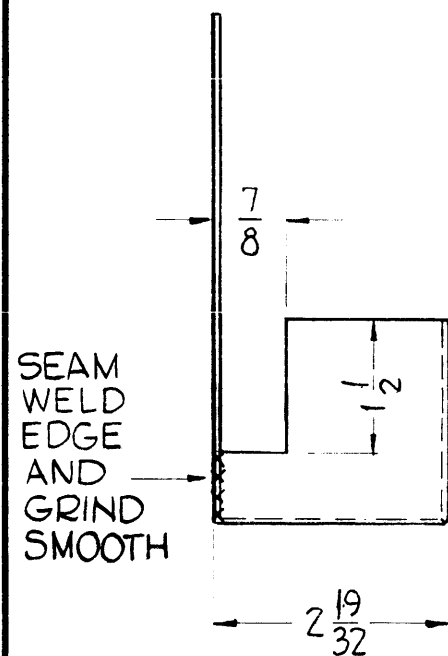
REQ. ITEM	PART NO.	DESCRIPTION	SYMBOL
18 GA		THE TECHNICAL MATERIEL CORP. MAMARONECK, NEW YORK	
STEEL		RECEPTACLE BOX	
TYPE & TEMPER		HEAT TREAT. SPEC.	DRAWN
S115 TMC GRAY			86.
FINISH & SPEC. NO.		ELEC. DES. APP.	MECH. DES. APP.
			MS-2502

MS-2522C

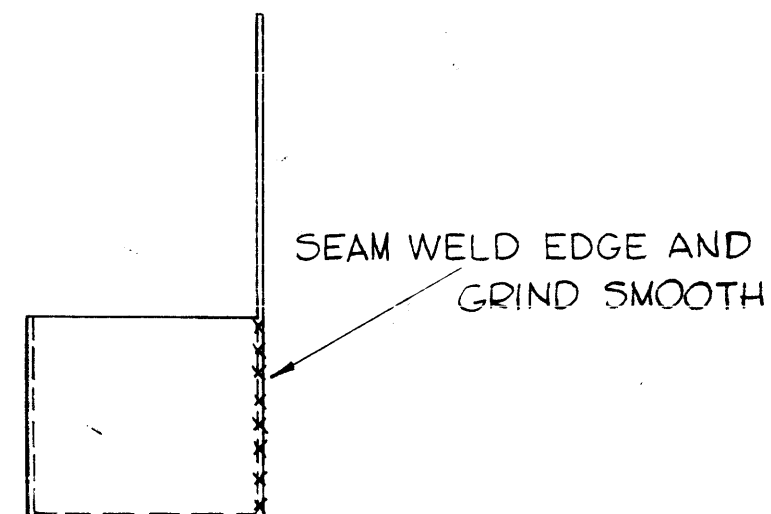
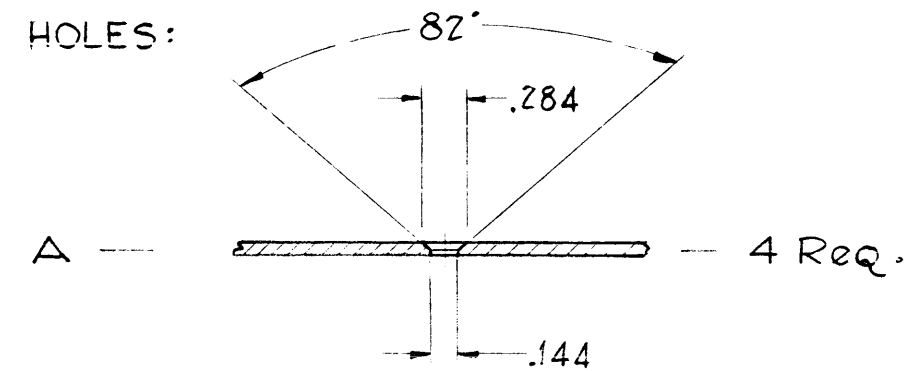
NOTICE TO PERSONS RECEIVING THIS DRAWING

THE TECHNICAL MATERIEL CORPORATION claims proprietary right in the material disclosed hereon. This drawing is issued in confidence for engineering information only and may not be reproduced or used to manufacture anything shown hereon without permission from THE TECHNICAL MATERIEL CORPORATION to the user. This drawing is loaned for mutual assistance and is subject to recall at any time.

Property of:
THE TECHNICAL MATERIEL CORPORATION
MAMARONECK, NEW YORK



HOLES:



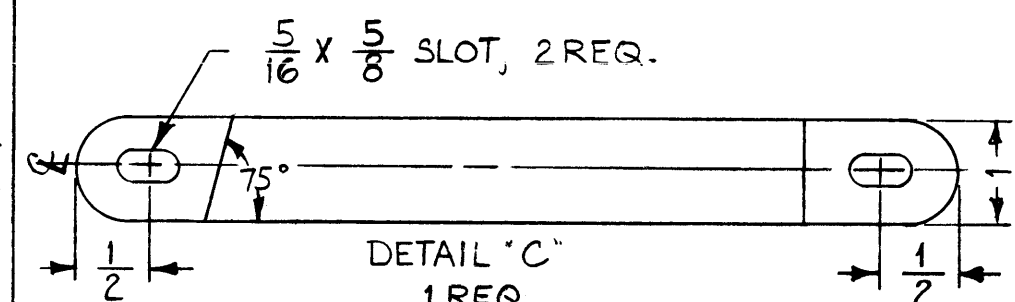
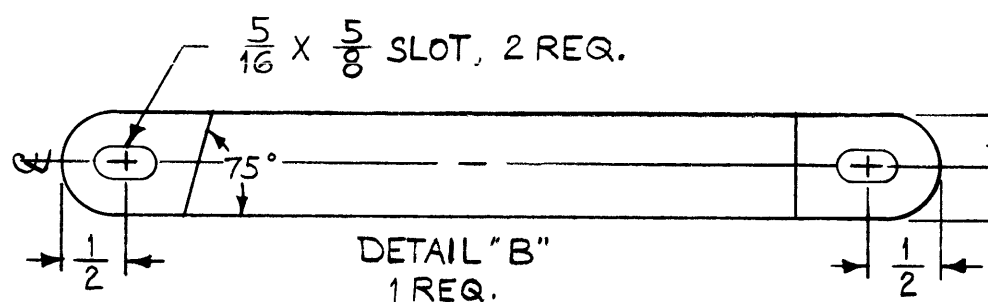
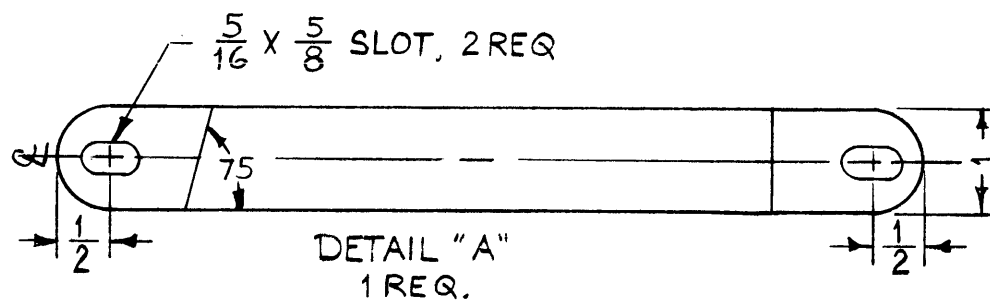
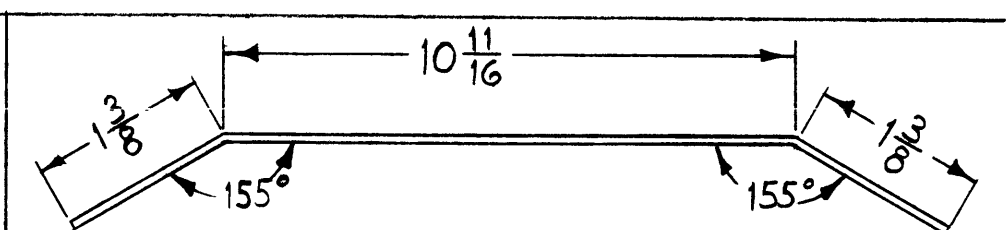
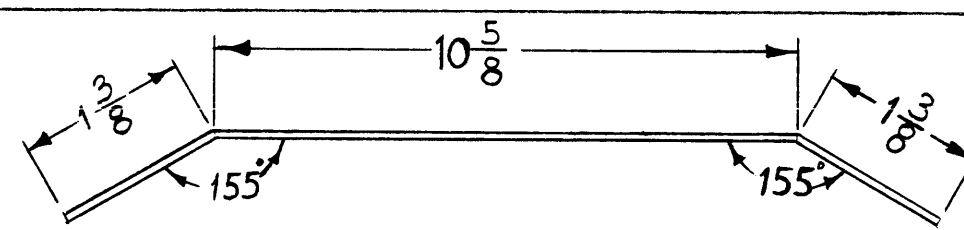
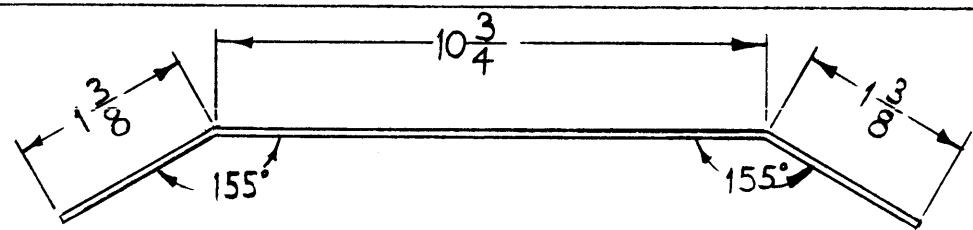
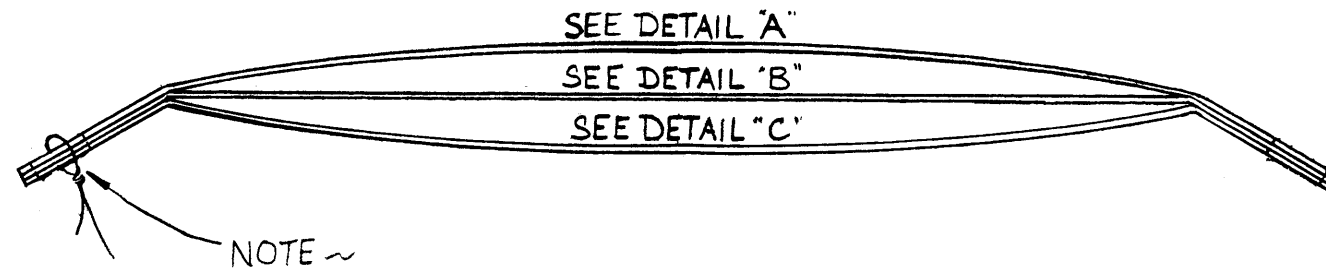
FINISH NOTE:

S404 YELLOW IRIDITE,
S114 ZINC CHROMATE PRIMER,
S197 BLACK SEMI-GLOSS ENAMEL.

C	DIM 2-19/32 WAS 2-1/16.	4/26/61	4723	[Signature]	[Signature]	[Signature]
	DIM 1-1/2 WAS 1-3/8					
	DIM 7/8 WAS 3/4					
	DIM 1 WAS 5/8					
	DIM 5 5/16 WAS 5 1/4					
DIM 2" WAS 1 5/16						
B	S114 & S197 ADDED TO FINISH & SPEC NO. S120 DELETED FROM FINISH & SPEC NO.	3-23-61	4470	W.A.F.	[Signature]	[Signature]
A	1/4 RADIUS ADDED	3-10-61	4370	W.A.F.	[Signature]	[Signature]
SYM	DESCRIPTION	DATE	CH. NO.	DRAFTS	CHECKER	ENG. APP.
UNLESS OTHERWISE SPECIFIED:		SCALE: 1/2 (Do Not Scale)				
DIMENSIONS ARE IN INCHES		MAXIMUM ALLOWABLE TOLERANCES HAVE BEEN DETERMINED AND ANY DEVIATIONS WILL BE CAUSE FOR REJECTION.				
TOLERANCES ON FRACTIONS ± 1/64 DECIMALS ± .005 ANGLES ± 1/2°		REMOVE ALL BURRS AND SHARP EDGES				
		1	SWR 3000CPM			1-17-61
REQ. PER UNIT	MODEL	SECTION	ASS'Y. NO.	DATE		
USED ON						

REQ. ITEM	PART NO.	DESCRIPTION	SYMBOL
	.064 TH'K	THE TECHNICAL MATERIEL CORP. MAMARONECK, NEW YORK	
	STOCK SIZE		
	ALUMINUM	HOLDER, METER	
	MATERIAL		
5052-11-32		J.C. Biele	[Signature]
TYPE & TEMPER	HEAT TREAT. SPEC.	DRAWN	CHECKER
SEE NOTE		[Signature]	[Signature]
FINISH & SPEC. NO.	ELEC. DES. APP.	MECH. DES. APP.	MS-2522C

MS-2535 A



NOTICE TO PERSONS RECEIVING THIS DRAWING

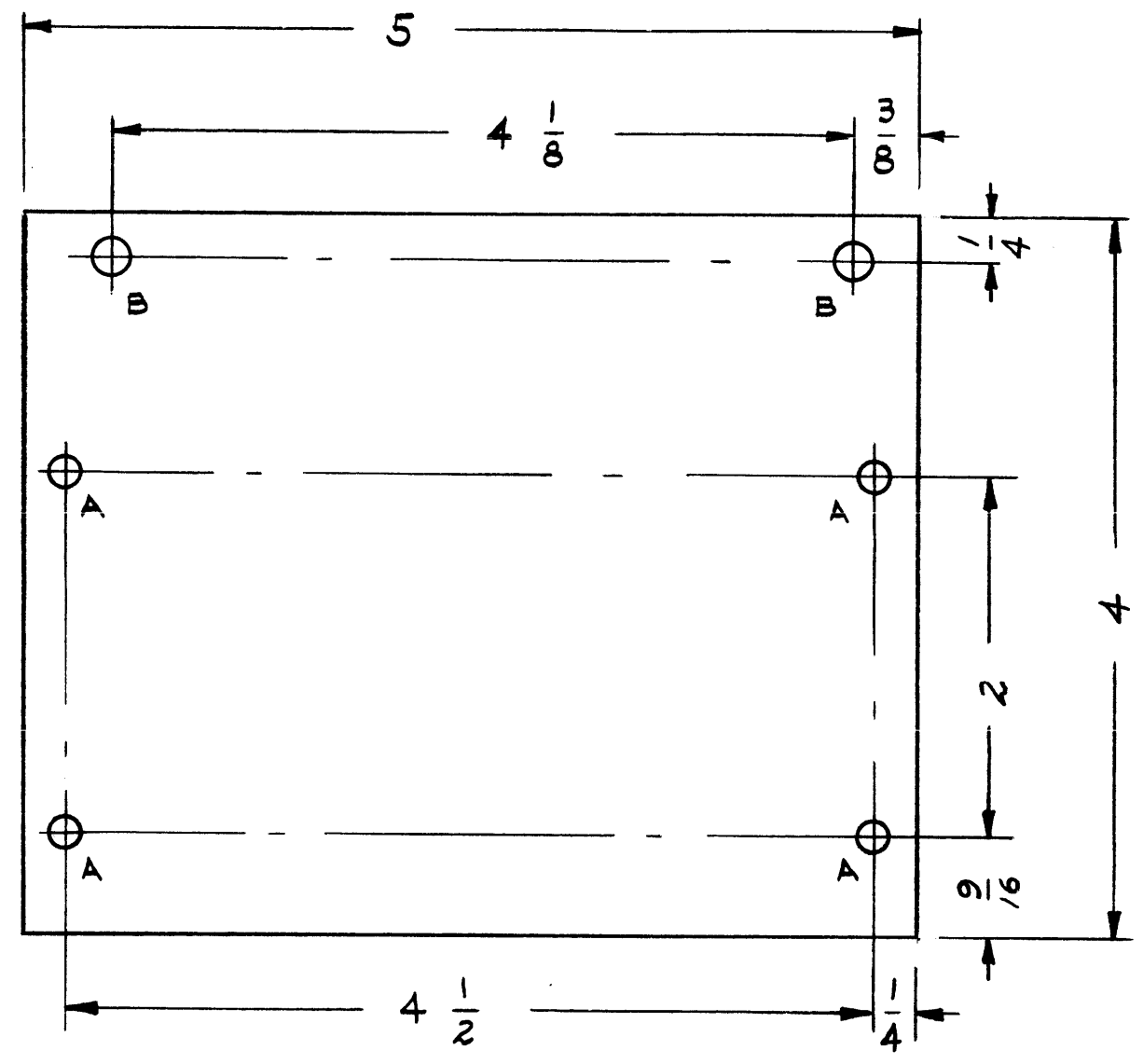
THE TECHNICAL MATERIEL CORPORATION claims proprie ary right in the material disclosed hereon. This drawing is issued in confidence for engineering information only and may not be reproduced or used to manufacture anything shown hereon without permission from THE TECHNICAL MATERIEL CORPORATION to the user. This drawing is loaned for mutual assistance and is subject to recall at any time.

Property of:
THE TECHNICAL MATERIEL CORPORATION
MAMARONECK, NEW YORK

SYM	DESCRIPTION	DATE	CH. NO.	DRAFTS	CHECKER	ENG. APP.
A	WIRING NOTE ADDED ITEMS 1 & 2 DELETED	4/24/61	4732	JSM	JCB	DB
UNLESS OTHERWISE SPECIFIED:		SCALE: DO NOT SCALE				
DIMENSIONS ARE IN INCHES		MAXIMUM ALLOWABLE TOLERANCES HAVE BEEN DETERMINED AND ANY DEVIATIONS WILL BE CAUSE FOR REJECTION. REMOVE ALL BURRS AND SHARP EDGES				
TOLERANCES ON FRACTIONS ± 1/64 DECIMALS ± .005 ANGLES ± 1/2°		REQ. PER UNIT				

REQ. PER UNIT	MODEL	SECTION	ASS'Y. NO.	DATE
1	GPT-40K			3-6-61
USED ON				

REQ.	ITEM	PART NO.	DESCRIPTION	SYMBOL
		.031	THE TECHNICAL MATERIEL CORP. MAMARONECK, NEW YORK	
		STOCK SIZE		
		COPPER	STRAP, 40K R.F. INPUT	
		MATERIAL		
		SOFT	W.A.F.	DB
		TYPE & TEMPER	DRAWN	CHECKER
		HEAT TREAT. SPEC.	FINAL APPROVAL	
		SILVER PLATED .00025	LB	
		FINISH & SPEC. NO.	ELEC. DES. APP.	MECH. DES. APP.
			MS-2535	A



HOLES	REQ'D
A ~ .166 DIA.	4
B ~ $\frac{.250}{.253}$ DIA. FOR (NT-129-1032-4)	2

NOTE:
DIMENSIONS ARE IN INCHES.

MOUNT INSERTS IN (B) HOLES AFTER FINISHING.

PROPERTY OF PERSONS RECEIVING THIS DRAWING

THE TECHNICAL MATERIEL CORPORATION claims proprietary right in the material disclosed hereon. This drawing is issued in confidence for engineering information only and may not be reproduced or used to manufacture anything shown hereon without permission from THE TECHNICAL MATERIEL CORPORATION to the user. This drawing is loaned for mutual assistance and is subject to recall at any time.

Property of:
THE TECHNICAL MATERIEL CORPORATION
MAMARONECK, NEW YORK

ISSUE	ITEM	CHANGED FROM	DATE	CH. NO.	DRAFTS	CHECKER	ENG. APP.
A	1	.191 DIA TO $\frac{.250}{.253}$	3-20-61	4463	ADD	C.G.	FOS

TOLERANCES: DEC. DIM. $\pm .005$; FRAC. DIM. $\pm 1/64$; ANGULAR DIM. $\pm 1/2^\circ$

SCALE: FULL

MAXIMUM ALLOWABLE TOLERANCES HAVE BEEN DETERMINED AND ANY DEVIATIONS WILL BE CAUSE FOR REJECTION. REMOVE ALL BURRS AND SHARP EDGES

REQ. PER UNIT	MODEL	PROJECT NO.	ASS'Y. NO.	DATE
1	DDR 6 E			3-15-61

USED ON

REQ. ITEM	PART NO.	DESCRIPTION	SYMBOL
2	1	NT-129-1032-4 NUT, ROUND, SWAGE TYPE	
	.064	STOCK SIZE	
	ALUMINUM	MATERIAL	
	5052 H32	TYPE & TEMPER	
	S404 YELLOW IRIDITE	FINISH & SPEC. NO.	
		HEAT TREAT. SPEC.	
		DRAWN	
		CHECKED	
		FINAL APPROVAL	
		ELEC. DES. APP.	
		MECH. DES. APP.	

THE TECHNICAL MATERIEL CORP.
MAMARONECK, NEW YORK

BRACKET MOUNTING
(CAPACITOR ASSEMBLY)

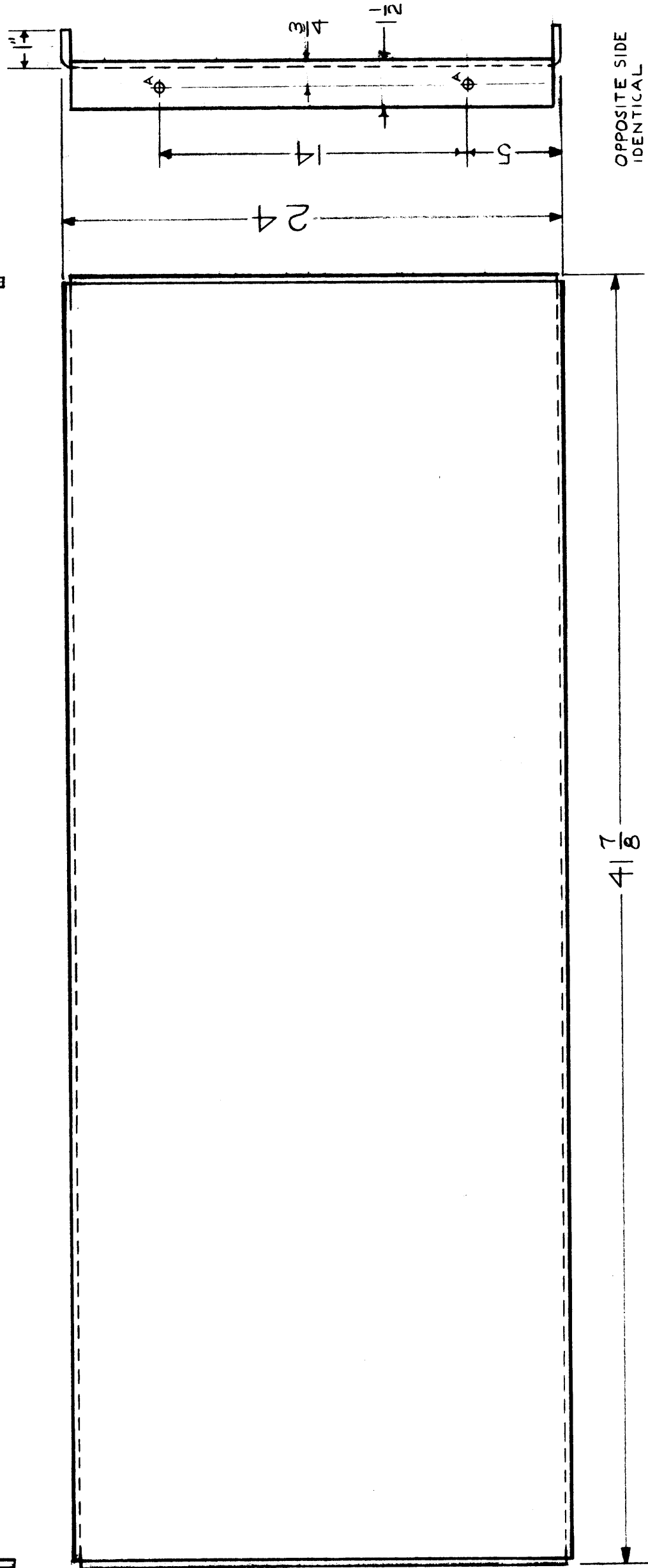
Drawn: *ADD*, Checked: *FOS*, Final Approval: *FOS*

MS-2540 A

A - $\frac{7}{32}$ DIA. - 4 REQ'D.

METAL STAMP TMC PART # $\frac{1}{8}$ GOTHIC

MS-2572



MS-2572

REQ. ITEM	PART NO.	DESCRIPTION	SYMBOL
	$\frac{1}{8}$	THE TECHNICAL MATERIEL CORP. MAMARONECK, NEW YORK	
	STOCK SIZE	PLATE, CAPACITOR	
	ALUMINUM		
	MATERIAL		
5052-H32		LA	OB
TYPE & TEMPER	HEAT TREAT. SPEC.	DRAWN	CHECKER
S404 YELLOW IRRIDITE		OA	MS-2572
	FINISH & SPEC. NO.	ELEC. DES. APP. MECH. DES. APP.	FINAL APPROVAL

REQ. PER UNIT	1	TER-25K/50	9-16-61
		MODEL	DATE
		SECTION	ASS'Y. NO.
		USED ON	

SYM	DESCRIPTION	DATE	CH. NO.	DRAFTS	CHECKER	ENG. APP.
	UNLESS OTHERWISE SPECIFIED: DIMENSIONS ARE IN INCHES TOLERANCES ON FRACTIONS $\pm 1/64$ DECIMALS $\pm .008$ ANGLES $\pm 1/20$					
	SCALE: MAXIMUM ALLOWABLE TOLERANCES HAVE BEEN DETERMINED AND ANY DEVIATIONS WILL BE CAUSE FOR REJECTION. REMOVE ALL BURRS AND SHARP EDGES					

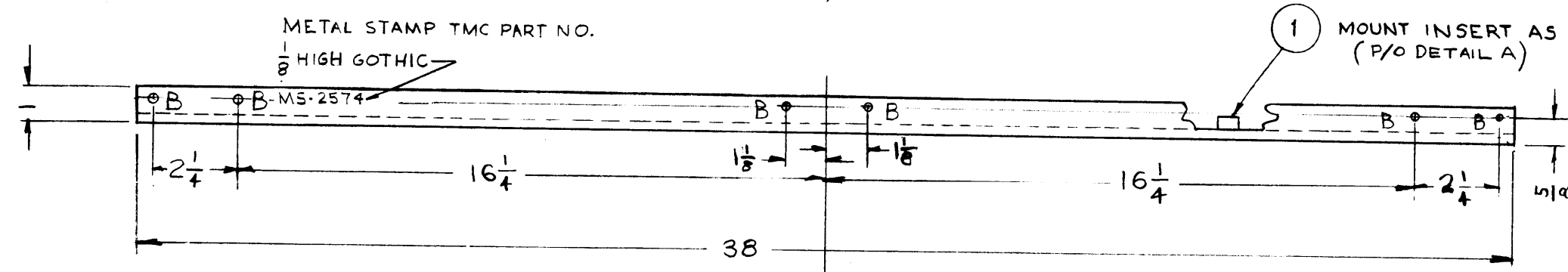
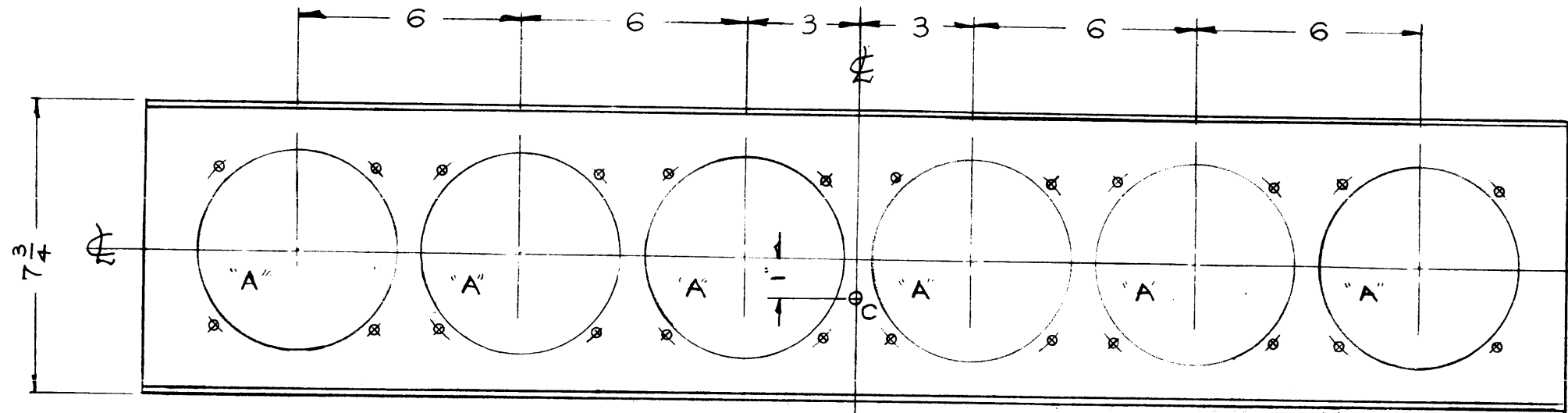
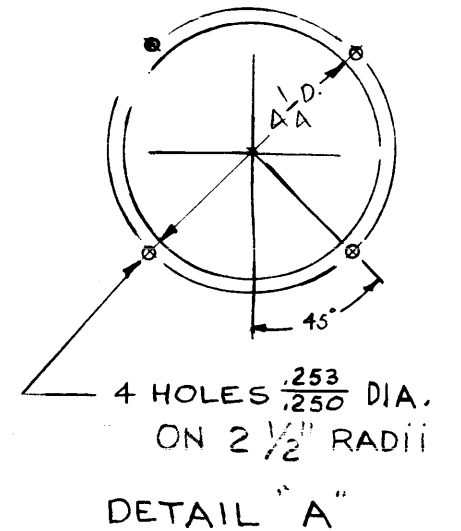
MS-2574 A

- A - SEE DETAIL 6 REQD.
- B - $\frac{3}{16}$ DIA. 12 REQD.
- C - $\frac{1}{4}$ DIA. 1 REQD.

NOTICE TO PERSONS RECEIVING THIS DRAWING

THE TECHNICAL MATERIEL CORPORATION claims proprietary right in the material disclosed hereon. This drawing is issued in confidence for engineering information only and may not be reproduced or used to manufacture anything shown hereon without permission from THE TECHNICAL MATERIEL CORPORATION to the user. This drawing is loaned for mutual assistance and is subject to recall at any time.

Property of:
THE TECHNICAL MATERIEL CORPORATION
MAMARONECK, NEW YORK



USE MATERIAL THICKNESS FOR MAX. RADIUS
ON ALL BENDS UNLESS OTHERWISE SPECIFIED

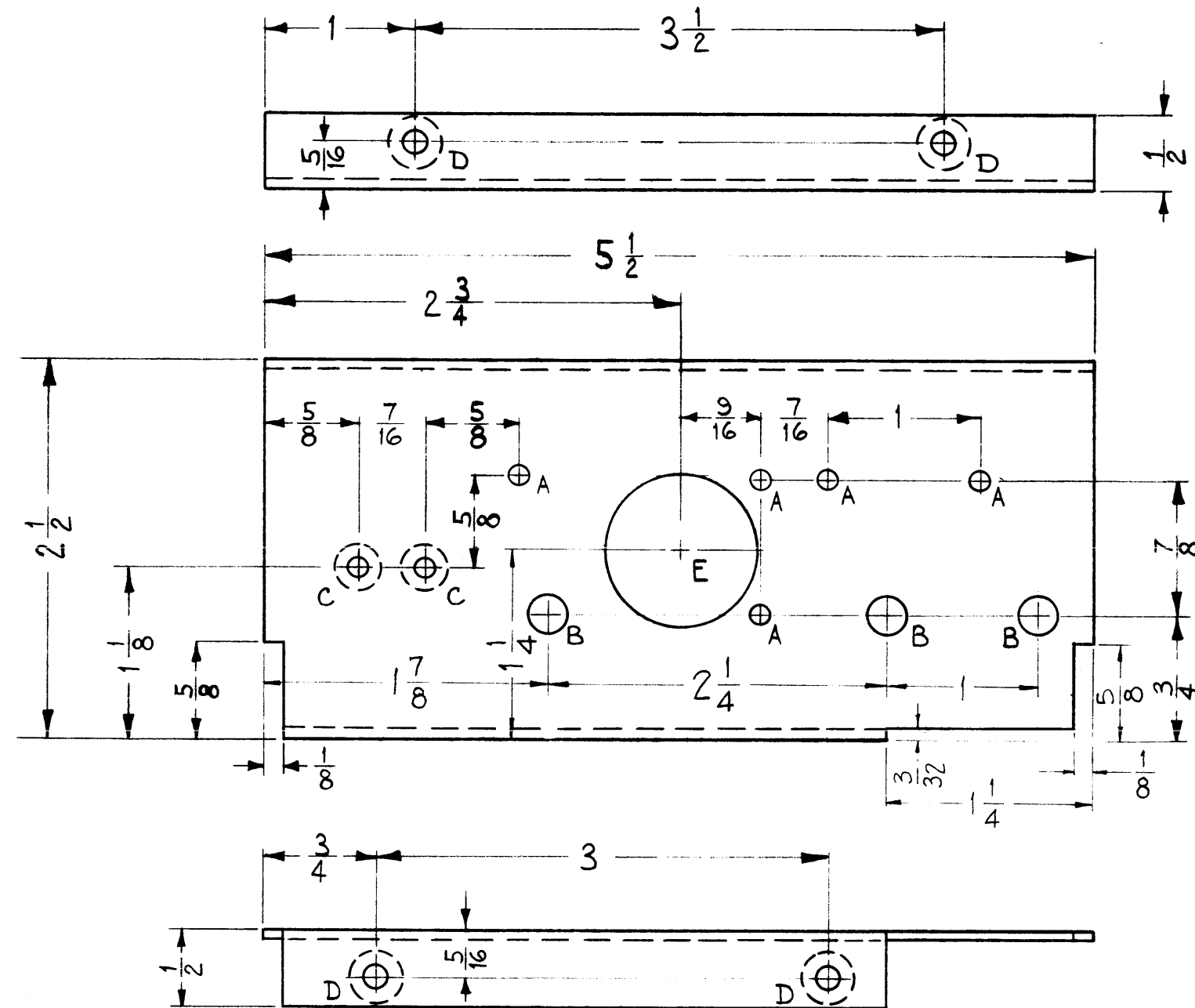
MOUNT INSERTS AFTER FINISHING

A	ON "A" DETAIL DIM. $4\frac{1}{4}$ WAS $5\frac{1}{4}$ & $2\frac{1}{2}$ RAD WAS 3" RAD	10-5-89		G.D.L.		
SYM	DESCRIPTION	DATE	CH. NO.	DRAFTS	CHECKER	ENG. APP.
UNLESS OTHERWISE SPECIFIED: DIMENSIONS ARE IN INCHES TOLERANCES ON FRACTIONS $\pm 1/64$ DECIMALS $\pm .005$ ANGLES $\pm 1/2^\circ$		SCALE: MAXIMUM ALLOWABLE TOLERANCES HAVE BEEN DETERMINED AND ANY DEVIATIONS WILL BE CAUSE FOR REJECTION. REMOVE ALL BURRS AND SHARP EDGES				

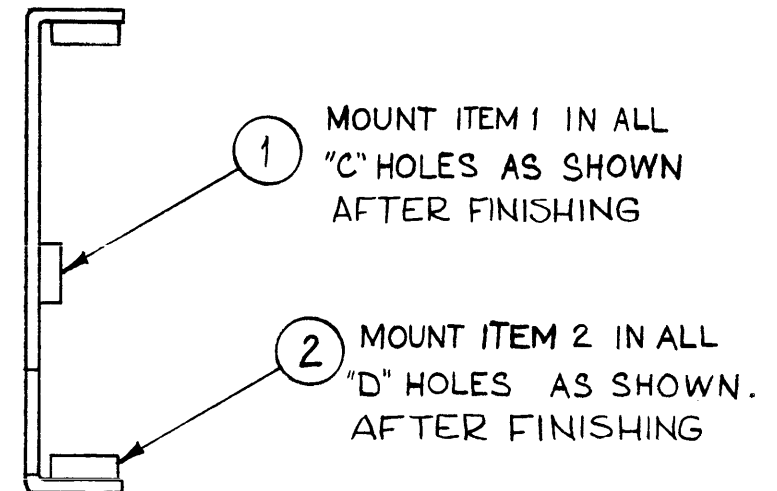
1	TER-25k/50				
REQ.	MODEL	SECTION	ASS'Y. NO.	DATE	
UNIT	USED ON				

24	1	NT-129-1032-4	NUT, ROUND, SWAGE TYPE	
REQ.	ITEM	PART NO.	DESCRIPTION	SYMBOL
	.081			
STOCK SIZE			THE TECHNICAL MATERIEL CORP. MAMARONECK, NEW YORK	
ALUMINUM			PLATE, RESISTOR MTG TOP	
MATERIAL				
5052-H32			R. LOPEZ 9-21-61	
TYPE & TEMPER	HEAT TREAT. SPEC.	DRAWN	CHECKER	FINAL APPROVAL
S404 YELLOW IRIDITE		aa		MS-2574 A
FINISH & SPEC. NO.		ELEC. DES. APP.	MECH. DES. APP.	

MS-2578



- A ~ 1/8" DIA. 5 REQ.
- B ~ 1/4" DIA. 3 "
- C ~ .161-.164 DIA. 2 "
- D ~ .191-.194 DIA. 4 "
- E ~ 1" DIA. 1 "



MOUNT INSERTS AFTER FINISHING

USE MATERIAL THICKNESS FOR MAX. RADIUS ON ALL BENDS UNLESS OTHERWISE SPECIFIED

THIS DRAWING IS LOANED TO YOU FOR YOUR USE ONLY. THE TECHNICAL MATERIEL CORPORATION claims proprietary rights in the material disclosed herein. This drawing is loaned in confidence for engineering information only and may not be reproduced or used to manufacture anything shown herein without permission from THE TECHNICAL MATERIEL CORPORATION to the user. This drawing is loaned for mutual assistance and is subject to recall at any time.

Property of:
THE TECHNICAL MATERIEL CORPORATION
MAMARONECK, NEW YORK

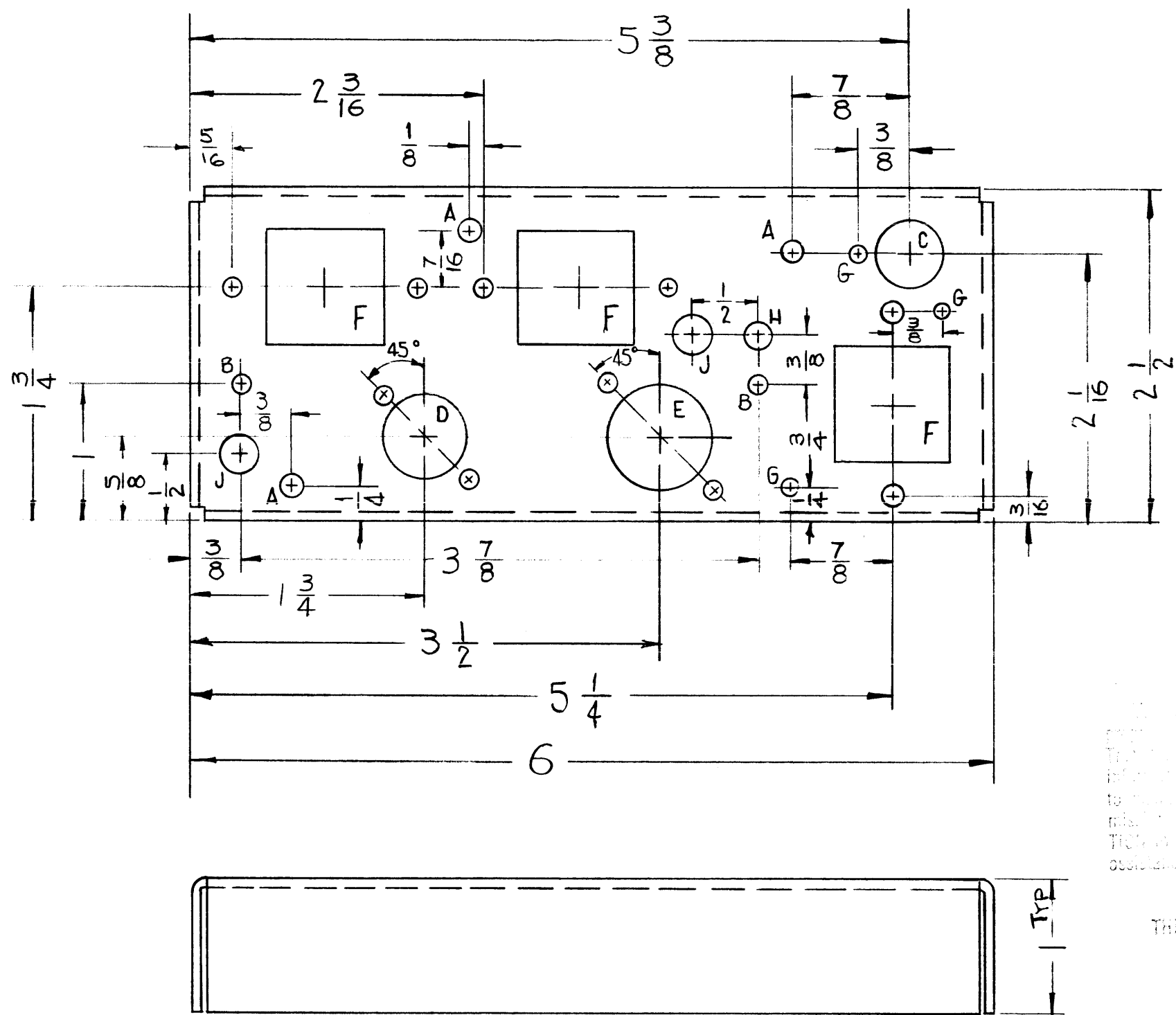
REF: LD-920 (1)

4	2	NT-129-632-4	NUT, ROUND, SWAGE TYPE	
2	1	NT-129-440-4	NUT, ROUND, SWAGE TYPE	
REQ.	ITEM	PART NO.	DESCRIPTION	SYMBOL
.064			THE TECHNICAL MATERIEL CORP. MAMARONECK, NEW YORK	
ALUMINUM			SHIELD, R.F. SYNTHESIZER	
5052-H32			W.F.	JCB
TYPE & TEMPER		HEAT TREAT. SPEC.	DRAWN	CHECKER
S404 YELLOW IRIDITE			S.D.	JCB
FINISH & SPEC. NO.			ELEC. DES. APP.	MECH. DES. APP.
				MS-2578

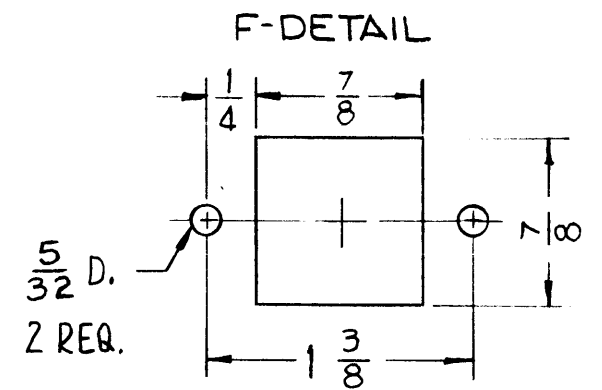
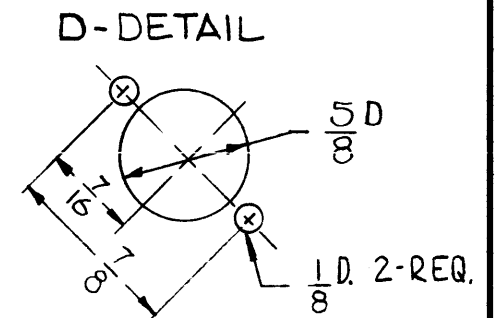
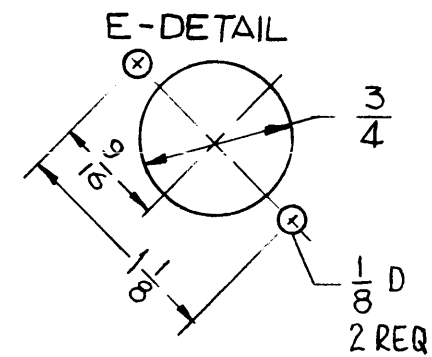
SYM	DESCRIPTION	DATE	CH. NO.	DRAFTS	CHECKER	ENG. APP.
UNLESS OTHERWISE SPECIFIED:		SCALE: (DO NOT SCALE)				
DIMENSIONS ARE IN INCHES		MAXIMUM ALLOWABLE TOLERANCES HAVE BEEN DETERMINED AND ANY DEVIATIONS WILL BE CAUSE FOR REJECTION.				
TOLERANCES ON FRACTIONS ± 1/64 DECIMALS ± .005 ANGLES ± 1/2°		REMOVE ALL BURRS AND SHARP EDGES				

1	CHG. 2	SYNTH.		5-23-61
REQ. PER UNIT	MODEL	SECTION	ASS'Y. NO.	DATE
USED ON				

MS-2579



- A- $\frac{3}{16}$ DIA. _____ 3 REQ.
- B- $\frac{11}{64}$ DIA. _____ 2 REQ.
- C- $\frac{1}{2}$ DIA. _____ 1 REQ.
- D- SEE DETAIL _____ 1 REQ.
- E- SEE DETAIL _____ 1 REQ.
- F- SEE DETAIL _____ 3 REQ.
- G- $\frac{1}{8}$ DIA _____ 3 REQ.
- H- #18 DRILL _____ 1 REQ.
- J- $\frac{5}{16}$ DIA _____ 2 REQ.



THIS DRAWING IS THE PROPERTY OF THE TECHNICAL MATERIAL CORPORATION. IT IS TO BE USED FOR THE MANUFACTURE OF THE DIVIDER DESCRIBED HEREIN AND IS NOT TO BE REPRODUCED OR USED FOR ANY OTHER PURPOSE WITHOUT THE WRITTEN PERMISSION OF THE TECHNICAL MATERIAL CORPORATION. THE TECHNICAL MATERIAL CORPORATION, MAMARONECK, NEW YORK.

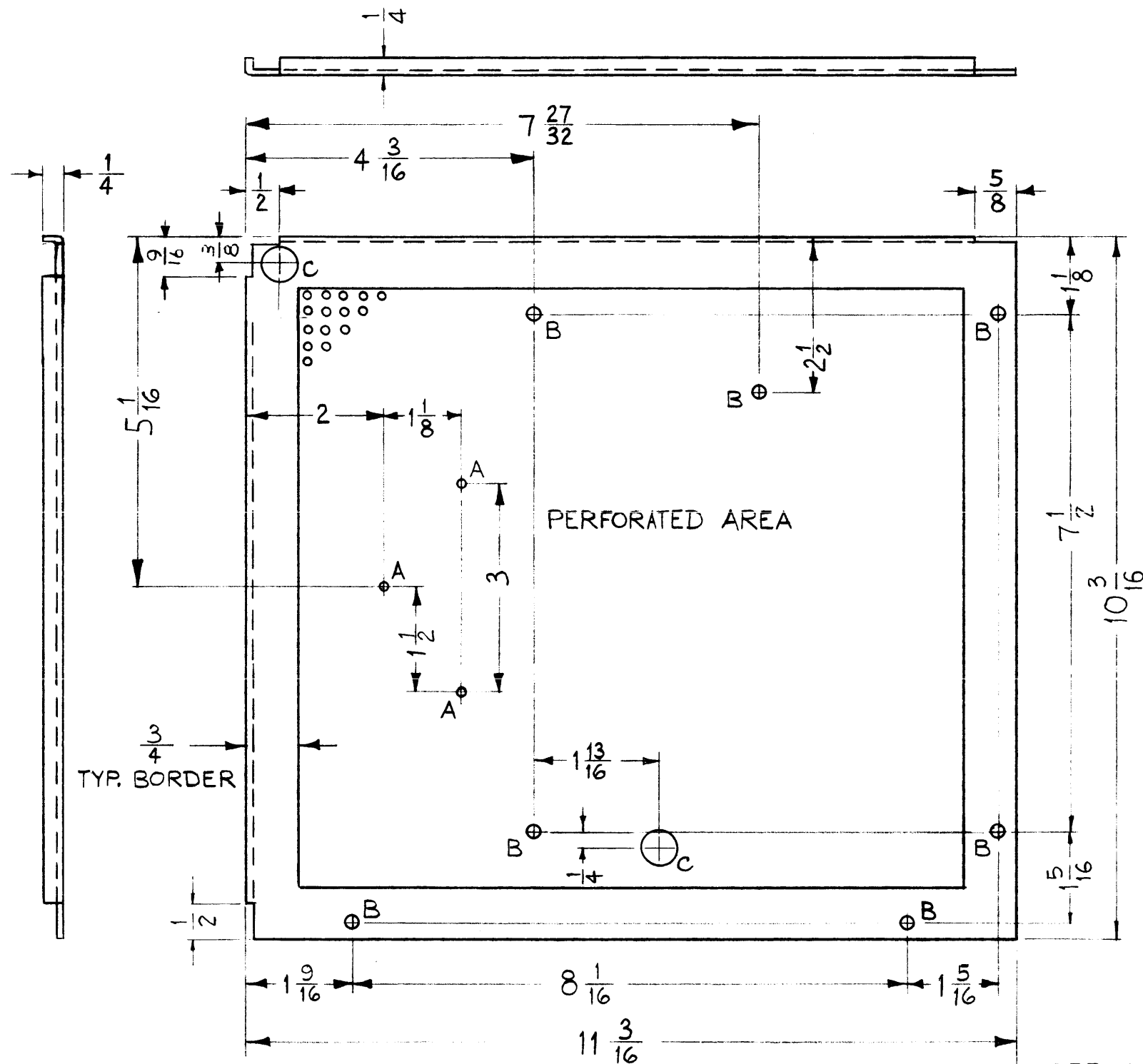
MOUNT INSERTS AFTER FINISHING
 USE MATERIAL THICKNESS FOR MAX. RADIUS
 ON ALL BENDS UNLESS OTHERWISE SPECIFIED

REF- LD-921 (2)

SYM	DESCRIPTION	DATE	CH. NO.	DRAFTS	CHECKER	ENG. APP.
UNLESS OTHERWISE SPECIFIED:						
DIMENSIONS ARE IN INCHES		SCALE:				
TOLERANCES ON FRACTIONS $\pm 1/64$ DECIMALS $\pm .005$ ANGLES $\pm 1/2^\circ$		MAXIMUM ALLOWABLE TOLERANCES HAVE BEEN DETERMINED AND ANY DEVIATIONS WILL BE CAUSE FOR REJECTION. REMOVE ALL BURRS AND SHARP EDGES				
		1	CHG-2			5-23-61
		REQ. PER UNIT	MODEL	SECTION	ASS'Y. NO.	DATE
			USED ON			

REQ.	ITEM	PART NO.	DESCRIPTION	SYMBOL
		.064	THE TECHNICAL MATERIAL CORP. MAMARONECK, NEW YORK	
		STOCK SIZE		
		ALUMINUM	CHASSIS, DIVIDER	
		MATERIAL		
		5052-H32	R. UZZO	
		TYPE & TEMPER	DRAWN	CHECKER
		HEAT TREAT. SPEC.		
		S404 YELLOW IRIDITE		
		FINISH & SPEC. NO.	ELEC. DES. APP.	MECH. DES. APP.
				MS-2579

MS-2582 A



- A ~ .128 DIA. 3 REQ.
- B ~ 3/16 DIA. 7 "
- C ~ 1/2 DIA. 2 "

NOTICE TO PERSONS RECEIVING THIS DRAWING

THE TECHNICAL MATERIEL CORPORATION claims proprietary right in the material disclosed hereon. This drawing is issued in confidence for engineering information only and may not be reproduced or used to manufacture anything shown hereon without permission from THE TECHNICAL MATERIEL CORPORATION to the user. This drawing is loaned for mutual assistance and is subject to recall at any time.

Property of:
THE TECHNICAL MATERIEL CORPORATION
MAMARONECK, NEW YORK

USE MATERIAL THICKNESS FOR MAX. RADIUS ON ALL BENDS UNLESS OTHERWISE SPECIFIED

REF: MS-1775-14

SYM	DESCRIPTION	DATE	CH. NO.	DRAFTS	CHECKER	ENG. APP.
A	9/16 DIM ADDED (LEFT CORNER)	3-22-62	6506	G. S.	<i>[Signature]</i>	<i>[Signature]</i>

UNLESS OTHERWISE SPECIFIED:
DIMENSIONS ARE IN INCHES
TOLERANCES ON FRACTIONS ± 1/64 DECIMALS ± .005 ANGLES ± 1/2°

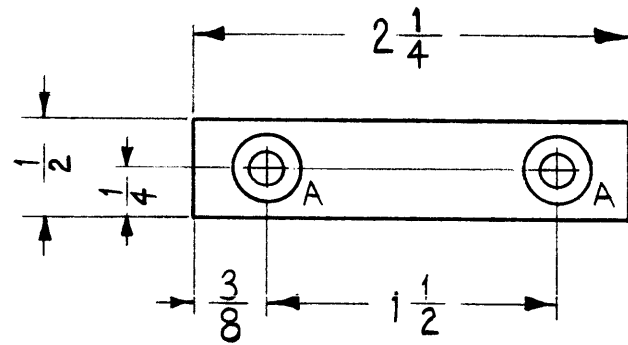
SCALE: 2:1 (DO NOT SCALE)
MAXIMUM ALLOWABLE TOLERANCES HAVE BEEN DETERMINED AND ANY DEVIATIONS WILL BE CAUSE FOR REJECTION.
REMOVE ALL BURRS AND SHARP EDGES

REQ. PER UNIT	MODEL	SECTION	ASS'Y. NO.	DATE
1	CHG-2	MAIN		5-23-61

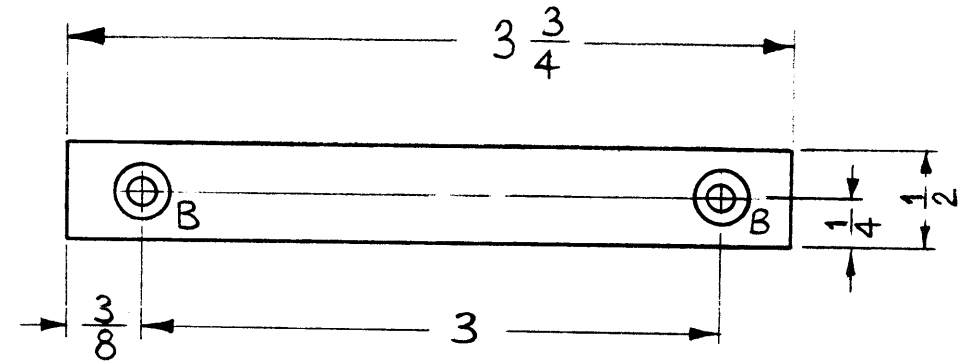
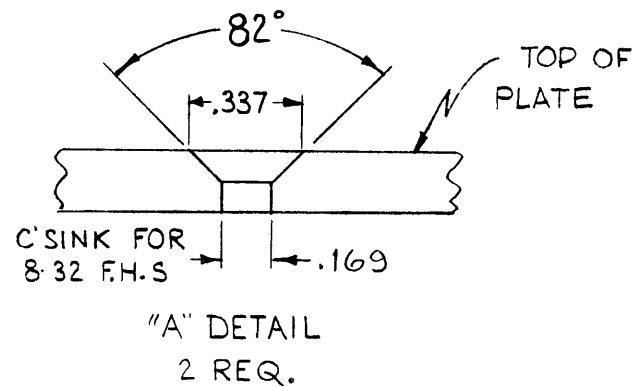
USED ON

REQ.	ITEM	PART NO.	DESCRIPTION	SYMBOL
		.051	THE TECHNICAL MATERIEL CORP. MAMARONECK, NEW YORK	
		STOCK SIZE		
		ALUMINUM	COVER, TOP, R.F. SECTION	
		MATERIAL		
	5052-H32		<i>[Signature]</i> <i>[Signature]</i>	<i>[Signature]</i>
	TYPE & TEMPER	HEAT TREAT. SPEC.	DRAWN	CHECKER
	5404-YELLOW IRIDITE		<i>[Signature]</i> <i>[Signature]</i>	
	FINISH & SPEC. NO.	ELEC. DES. APP.	MECH. DES. APP.	
			MS-2582	A

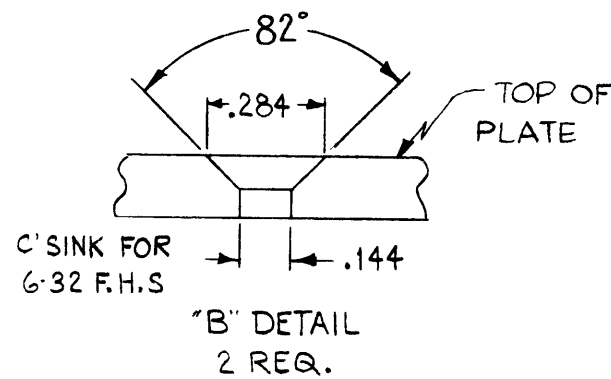
MS-2584



RIGHT SIDE
1 PER UNIT
MS-2584-1



LEFT SIDE
1 PER UNIT
MS-2584-2



LOANED TO PERSONS RECEIVING THIS DRAWING

THE TECHNICAL MATERIEL CORPORATION claims proprietary right in the material disclosed hereon. This drawing is issued in confidence for engineering information only and may not be reproduced or used to manufacture anything shown hereon without permission from THE TECHNICAL MATERIEL CORPORATION to the user. This drawing is loaned for mutual assistance and is subject to recall at any time.

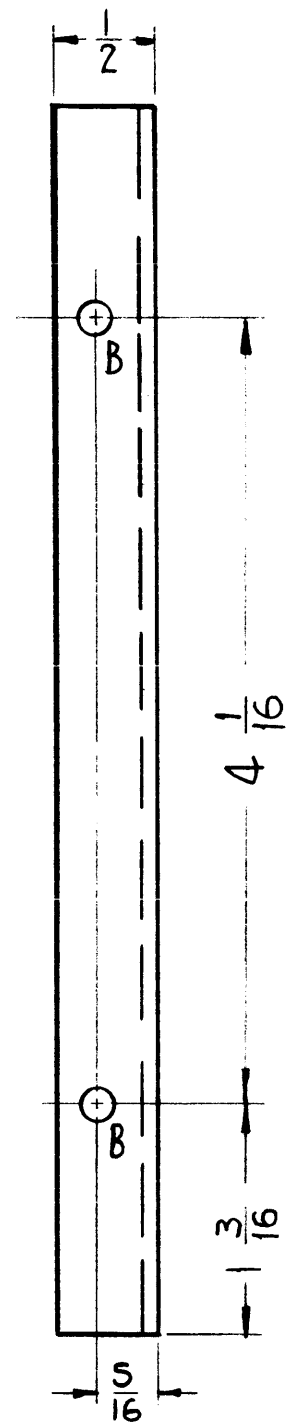
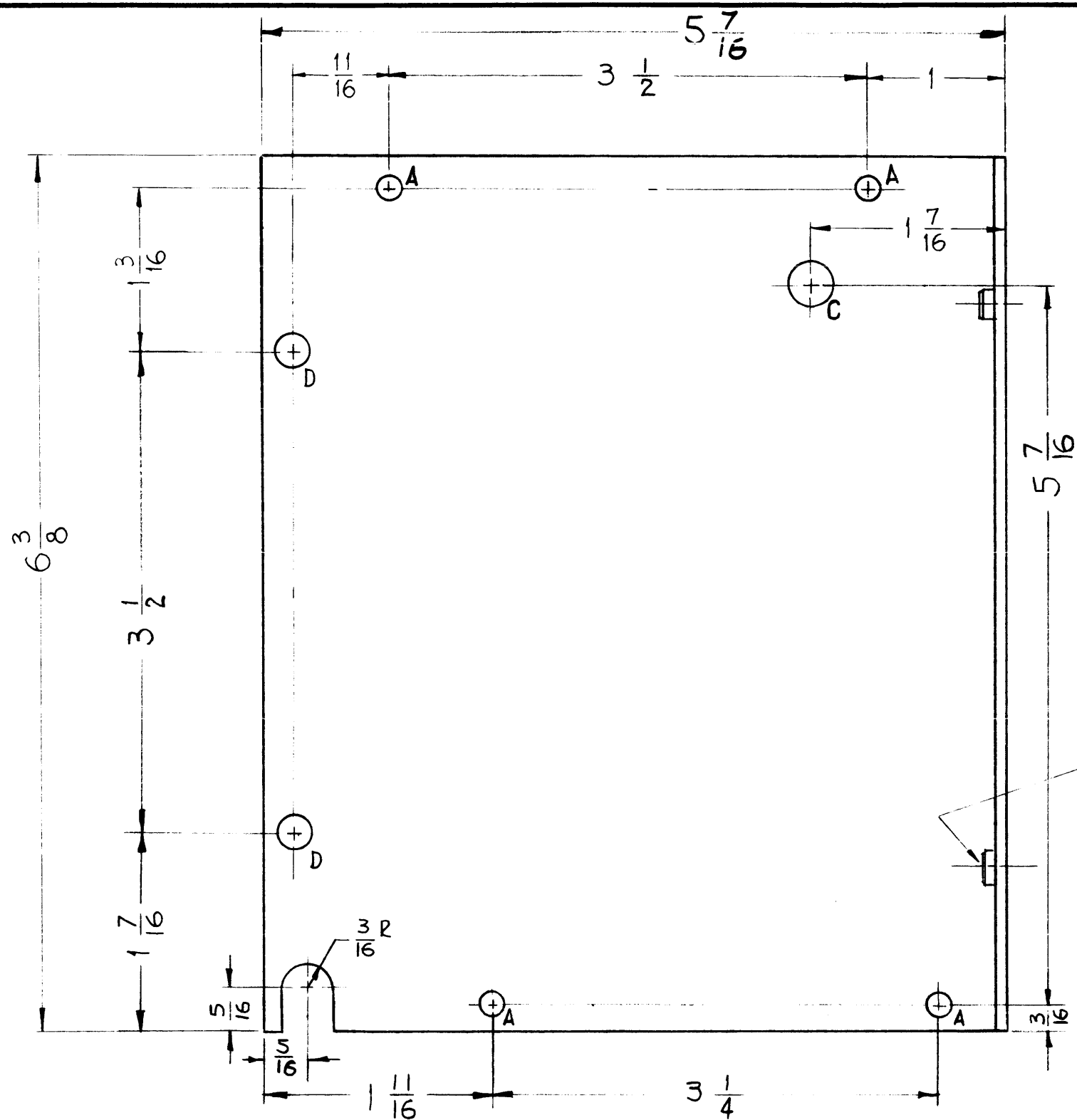
Property of:
THE TECHNICAL MATERIEL CORPORATION
MAMARONECK, NEW YORK

SYM	DESCRIPTION	DATE	CH. NO.	DRAFTS	CHECKER	ENG. APP.
UNLESS OTHERWISE SPECIFIED:						
DIMENSIONS ARE IN INCHES						
TOLERANCES ON FRACTIONS ± 1/64 DECIMALS ± .005 ANGLES ± 1/2°						
SCALE: (DO NOT SCALE)						
MAXIMUM ALLOWABLE TOLERANCES HAVE BEEN DETERMINED AND ANY DEVIATIONS WILL BE CAUSE FOR REJECTION. REMOVE ALL BURRS AND SHARP EDGES						

REQ. PER UNIT	MODEL	SECTION	ASS'Y. NO.	DATE
1 EA.	CHG-2	MAIN		5-23-61
1 EA.	CHG-1	MAIN		5-23-61
USED ON				

REQ. ITEM	PART NO.	DESCRIPTION	SYMBOL
	.064	THE TECHNICAL MATERIEL CORP.	
	STOCK SIZE	MAMARONECK, NEW YORK	
	ALUMINUM	SHIM, SLIDE	
	MATERIAL		
5052-H32		W.A.F.	J.C.B.
TYPE & TEMPER	HEAT TREAT. SPEC.	DRAWN	CHECKER
S404-YELLOW IRIDITE		S.D.	M.B.
FINISH & SPEC. NO.		ELEC. DES. APP.	MECH. DES. APP.
			MS-2584

MS-2591



- A - $\frac{5}{32}$ DIA. — 4 REQ
- B - .191 - .194 — 2 REQ
- C - $\frac{5}{16}$ DIA — 1 REQ
- D - $\frac{1}{4}$ DIA — 2 REQ

PROPERTY OF THE TECHNICAL MATERIEL CORPORATION
 THE TECHNICAL MATERIEL CORPORATION claims
 copyright in this drawing and in the design hereon.
 No part of this drawing or design may be reproduced or used
 for any purpose without the written permission of THE TECHNICAL MATERIEL CORPORATION
 to the user. This drawing is loaned for mutual
 assistance and is subject to recall at any time.

Property of:
 THE TECHNICAL MATERIEL CORPORATION
 MAMARONECK, NEW YORK

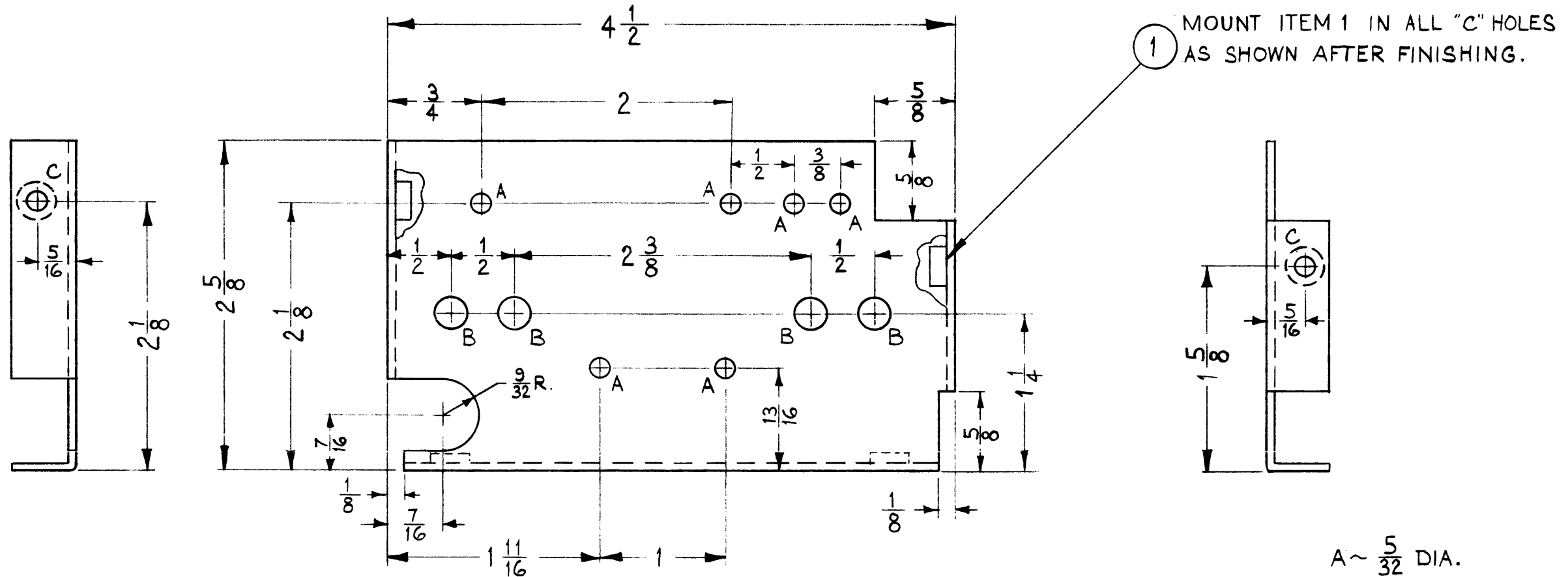
- NOTES —
- 1- MOUNT INSERTS AFTER FINISHING.
 - 2- USE MATERIAL THICKNESS FOR MAX. RADIUS ON BEND, UNLESS OTHERWISE SPECIFIED.

SYM	DESCRIPTION	DATE	CH. NO.	DRAFTS	CHECKER	ENG. APP.
UNLESS OTHERWISE SPECIFIED: DIMENSIONS ARE IN INCHES TOLERANCES ON FRACTIONS $\pm 1/64$ DECIMALS $\pm .005$ ANGLES $\pm 1/20^\circ$		SCALE: DO NOT SCALE MAXIMUM ALLOWABLE TOLERANCES HAVE BEEN DETERMINED AND ANY DEVIATIONS WILL BE CAUSE FOR REJECTION. REMOVE ALL BURRS AND SHARP EDGES				

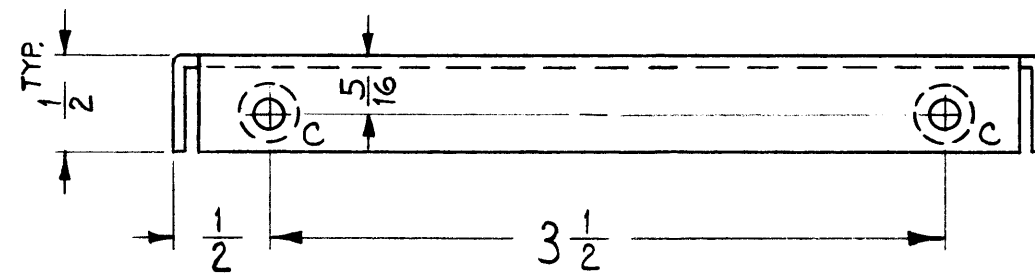
REQ. PER UNIT	MODEL	SECTION	ASS'Y. NO.	DATE
1	CHG-2	OVEN	OVEN/OSC	5-24-61

REQ.	ITEM	PART NO.	DESCRIPTION	SYMBOL
2	1	NT-129-632-4	NUT ROUND, SWAGE TYPE	B
.064 STOCK SIZE			THE TECHNICAL MATERIEL CORP. MAMARONECK, NEW YORK	
ALUMINUM			TOP COVER, OVEN	
5052-H32			RUZZO	JCH
TYPE & TEMPER		HEAT TREAT. SPEC.	DRAWN	CHECKER
S404 YELLOW IRIDITE			J.D.	JCH
FINISH & SPEC. NO.			ELEC. DES. APP.	MECH. DES. APP.
				MS-2591

MS-2594



A ~ $\frac{5}{32}$ DIA. 6 REQ.
 B ~ $\frac{1}{4}$ DIA. 4 "
 C ~ .191-.194 DIA. 4 "



MOUNT INSERTS AFTER FINISHING
 USE MATERIAL THICKNESS FOR MAX. RADIUS
 ON ALL BENDS UNLESS OTHERWISE SPECIFIED

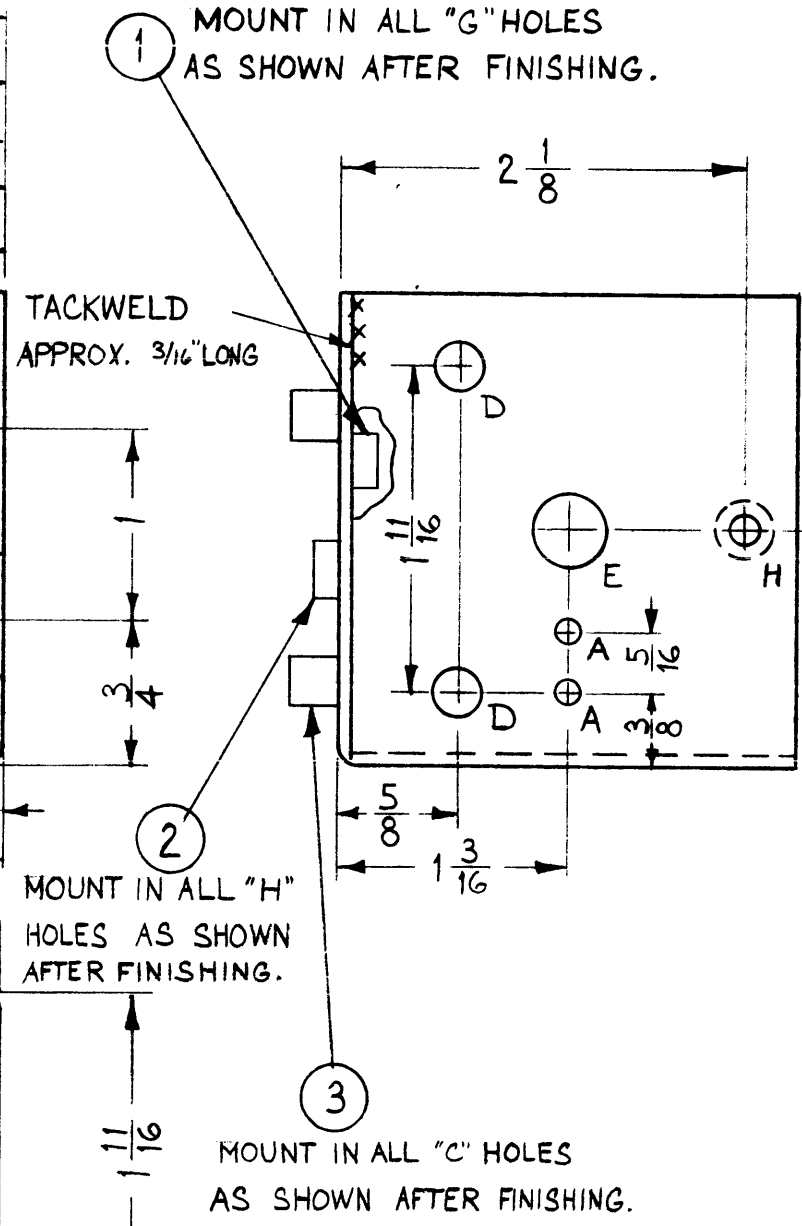
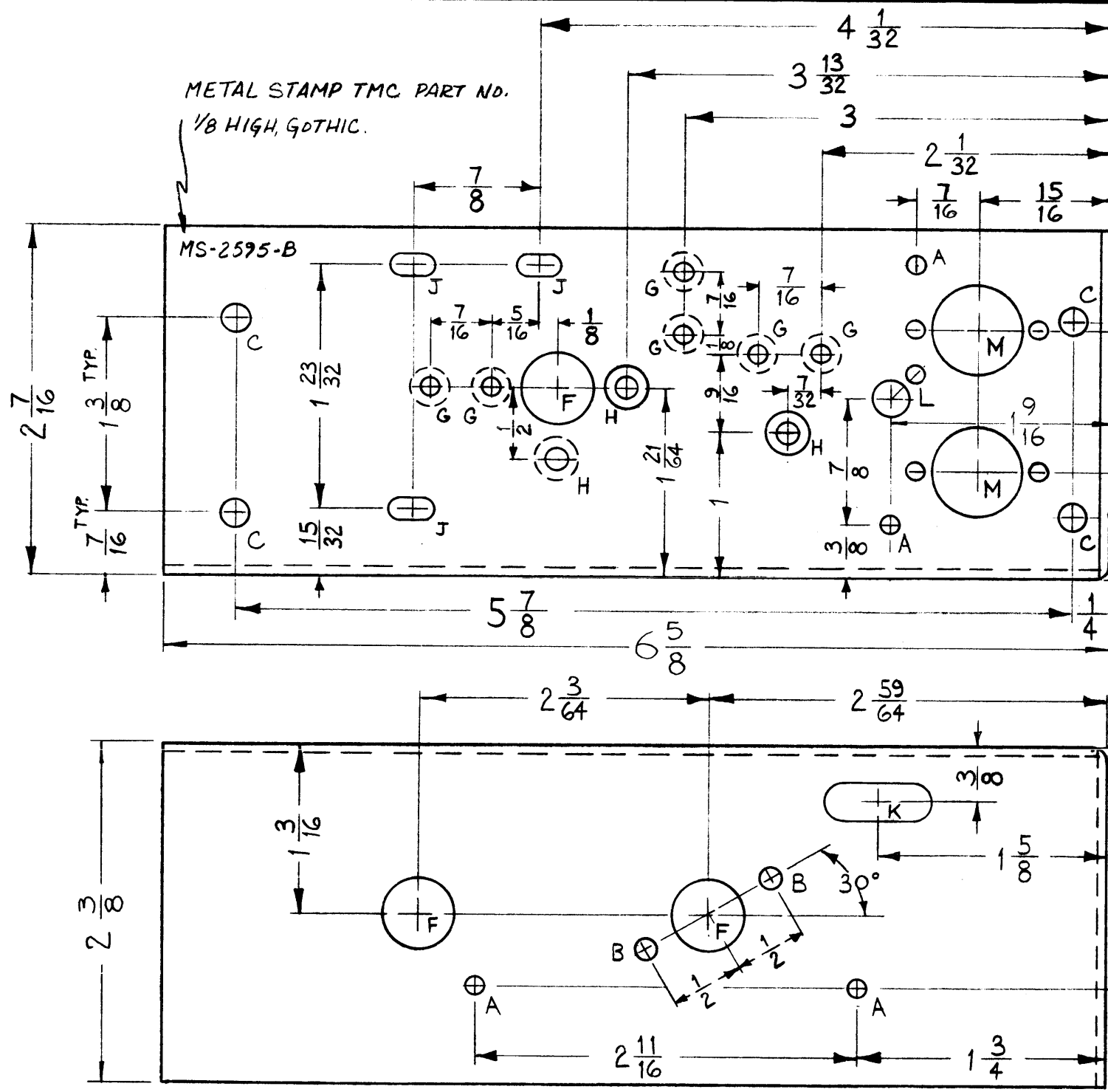
REF: LD-931 (2).

THE TECHNICAL MATERIEL CORPORATION
 MAMARONECK, NEW YORK

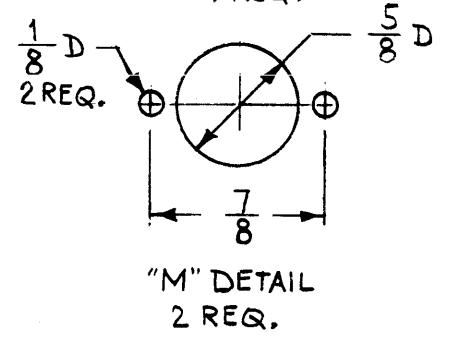
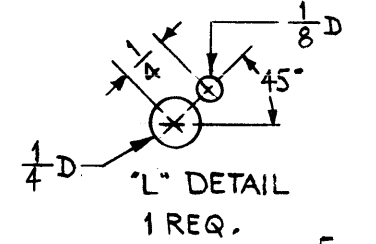
4	1	NT-129-632-4	NUT, ROUND, SWAGE TYPE	
REQ.	ITEM	PART NO.	DESCRIPTION	SYMBOL
.064			THE TECHNICAL MATERIEL CORP. MAMARONECK, NEW YORK	
ALUMINUM			SHIELD, CONNECTOR	
5052 H32			WAF	JCK
S404 YELLOW IRIDITE			S.D.	MS-2594
FINISH & SPEC. NO.			ELEC. DES. APP.	MECH. DES. APP.

SYM	DESCRIPTION	DATE	CH. NO.	DRAFTS	CHECKER	ENG. APP.
UNLESS OTHERWISE SPECIFIED:						
DIMENSIONS ARE IN INCHES		SCALE: (DO NOT SCALE)				
TOLERANCES ON FRACTIONS $\pm 1/64$ DECIMALS $\pm .005$ ANGLES $\pm 1/2^\circ$		MAXIMUM ALLOWABLE TOLERANCES HAVE BEEN DETERMINED AND ANY DEVIATIONS WILL BE CAUSE FOR REJECTION. REMOVE ALL BURRS AND SHARP EDGES				
1	CHG-2	MF-RF				5-24-61
REQ. PER UNIT	MODEL	SECTION	ASS'Y. NO.	DATE	USED ON	

MS-2595 B



- A ~ 1/8 DIA. 6 REQ.
- B ~ 5/32 DIA. 2 "
- C ~ .189 DIA. 4 "
- D ~ 1/4 DIA. 2 "
- E ~ 3/8 DIA. 1 "
- F ~ 1/2 DIA. 3 "
- G ~ .161-.164 DIA. 6 "
- H ~ .191-.194 DIA. 4 "
- J ~ 5/32 X 1/2 SLOT 3 "
- K ~ 1/4 X 3/4 SLOT 1 "



REF: LD-932 (2)

REQ.	ITEM	PART NO.	DESCRIPTION	SYMBOL
4	3	TE-108-1	STANDOFF, RIVET TYPE	
4	2	NT-129-632-4	NUT, ROUND, SWAGE TYPE	
6	1	NT-129-440-4	NUT, ROUND, SWAGE TYPE	
.064 STOCK SIZE			THE TECHNICAL MATERIEL CORP. MAMARONECK, NEW YORK	
ALUMINUM			CHASSIS, 4th R.F. SECTION	
5052-H32			DRAWN	FINAL APPROVAL
S404 YELL. IRIDITE			CHECKER	
FINISH & SPEC. NO.			ELEC. DES. APP.	MECH. DES. APP.

MOUNT INSERTS AFTER FINISHING
 USE MATERIAL THICKNESS FOR MAX. RADIUS ON ALL BENDS UNLESS OTHERWISE SPECIFIED

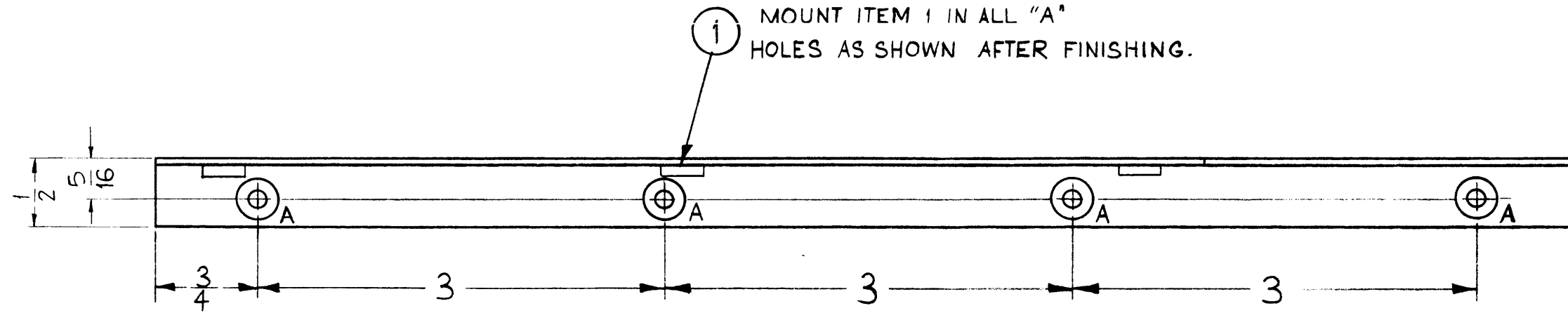
SYM	DESCRIPTION	DATE	CH. NO.	DRAFTS	CHECKER	ENG. APP.
B	"K" SLOT WAS 3/8 X 3/4	11-16-61	7600	GH	LD	
A	(J) WAS 5/32 X 5/16 SLOT	12-12-61	6053	L.H.	LD	

UNLESS OTHERWISE SPECIFIED:
 DIMENSIONS ARE IN INCHES
 TOLERANCES ON FRACTIONS ± 1/64 DECIMALS ± .005 ANGLES ± 1/2°

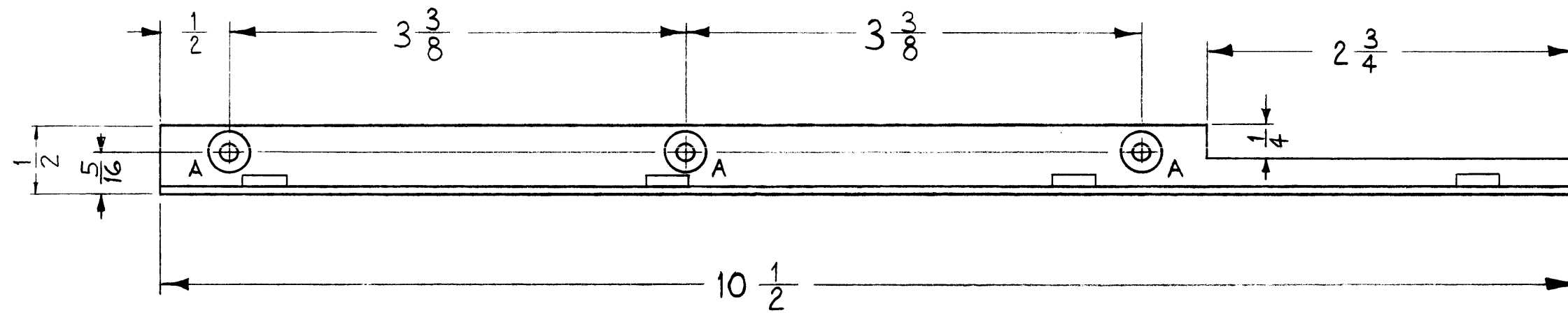
SCALE: (DO NOT SCALE)
 MAXIMUM ALLOWABLE TOLERANCES HAVE BEEN DETERMINED AND ANY DEVIATIONS WILL BE CAUSE FOR REJECTION. REMOVE ALL BURRS AND SHARP EDGES

REQ. PER UNIT	MODEL	SECTION	ASS'Y. NO.	DATE
1	CHG-2	MF/RF		5-24-61

MS-2599



A ~ .161-.164 DIA. 7 REQ.



MOUNT INSERTS AFTER FINISHING
 USE MATERIAL THICKNESS FOR MAX. RADIUS
 ON ALL BENDS UNLESS OTHERWISE SPECIFIED

SYM	DESCRIPTION	DATE	CH. NO.	DRAFTS	CHECKER	ENG. APP.
UNLESS OTHERWISE SPECIFIED:						
DIMENSIONS ARE IN INCHES						
TOLERANCES ON FRACTIONS ± 1/64 DECIMALS ± .005 ANGLES ± 1/2°						
SCALE: (DO NOT SCALE)		MAXIMUM ALLOWABLE TOLERANCES HAVE BEEN DETERMINED AND ANY DEVIATIONS WILL BE CAUSE FOR REJECTION. REMOVE ALL BURRS AND SHARP EDGES				

REQ. PER UNIT	MODEL	SECTION	ASS'Y. NO.	DATE
1	CHG-2	I.F.		5-23-61
USED ON				

7	1	NT-129-440-4	NUT, ROUND, SWAGE TYPE	
REQ.	ITEM	PART NO.	DESCRIPTION	
			SYMBOL	
		.064	THE TECHNICAL MATERIEL CORP.	
		STOCK SIZE	MAMARONECK, NEW YORK	
		ALUMINUM	BRACKET, MOUNTING, I.F. CHASSIS	
		MATERIAL		
		5052-H32	M.A.F.	JCB
		TYPE & TEMPER	DRAWN	CHECKER
		HEAT TREAT. SPEC.	FINAL APPROVAL	
		S404-YELLOW IRIDITE	J.D.	MS-2599
		FINISH & SPEC. NO.	ELEC. DES. APP.	MECH. DES. APP.