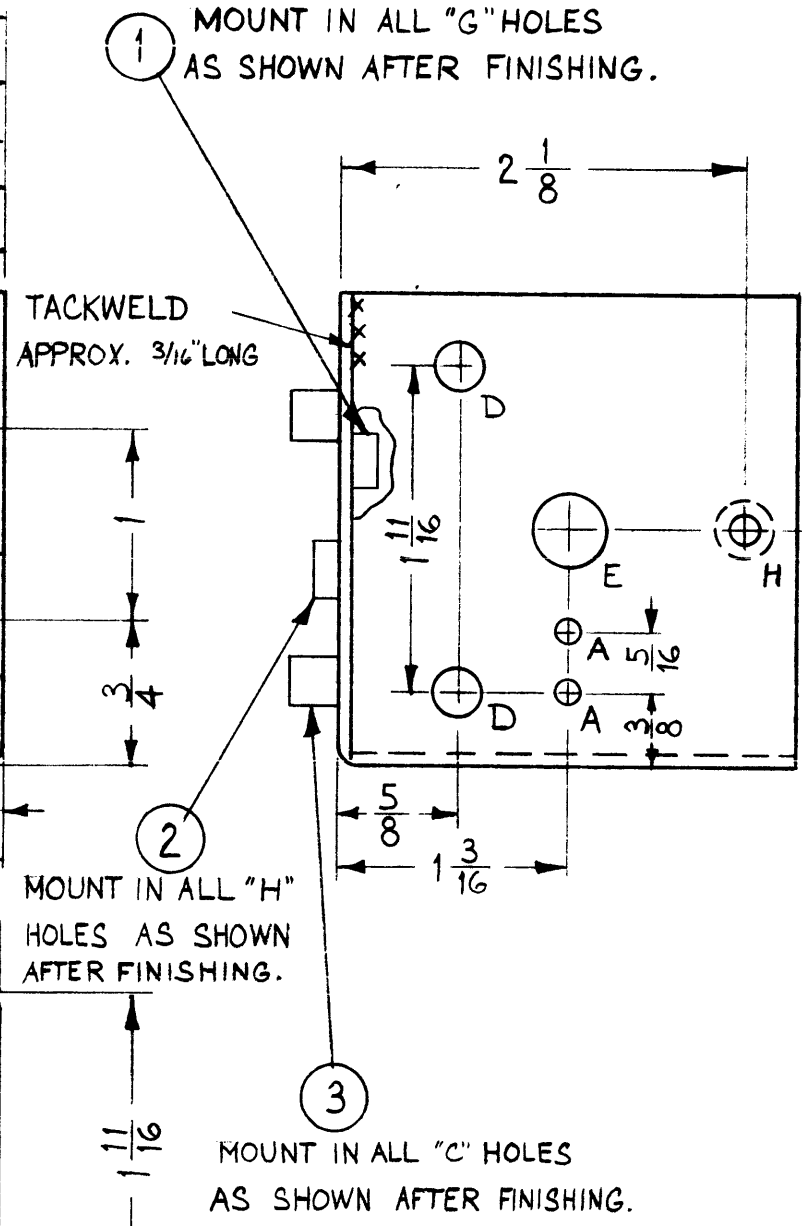
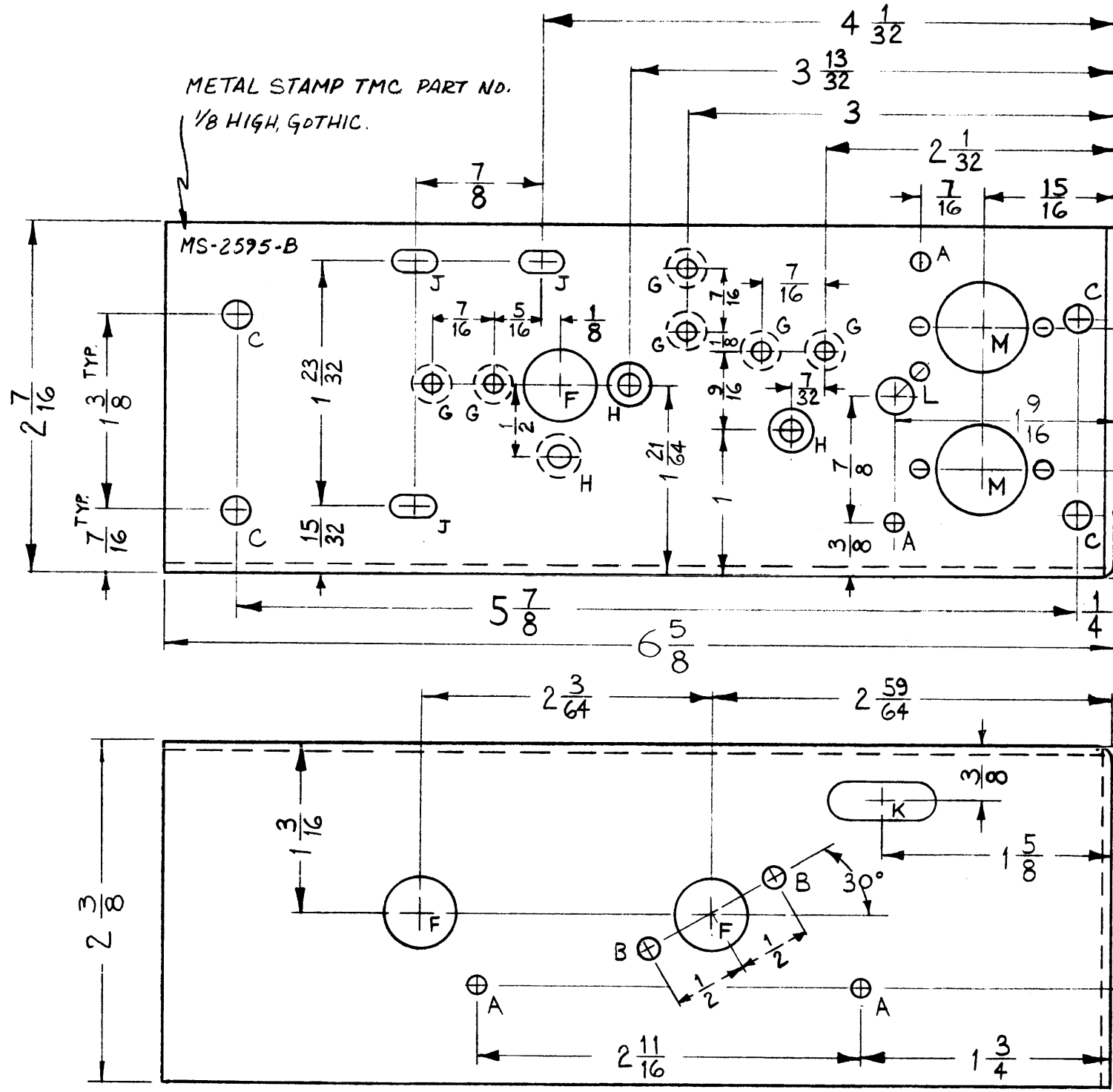
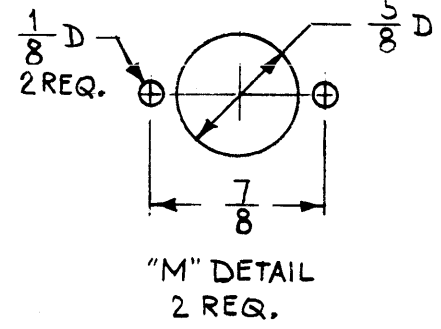
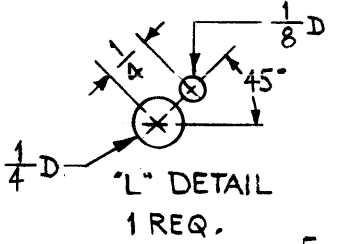


MS-2595 B



- A ~ 1/8 DIA. 6 REQ.
- B ~ 5/32 DIA. 2 "
- C ~ .189 DIA. 4 "
- D ~ 1/4 DIA. 2 "
- E ~ 3/8 DIA. 1 "
- F ~ 1/2 DIA. 3 "
- G ~ .161-.164 DIA. 6 "
- H ~ .191-.194 DIA. 4 "
- J ~ 5/32 X 1/2 SLOT 3 "
- K ~ 1/4 X 3/4 SLOT 1 "



REF: LD-932 (2)

4	3	TE-108-1	STANDOFF, RIVET TYPE
4	2	NT-129-632-4	NUT, ROUND, SWAGE TYPE
6	1	NT-129-440-4	NUT, ROUND, SWAGE TYPE

REQ.	ITEM	PART NO.	DESCRIPTION	SYMBOL
			.064	
			STOCK SIZE	
			ALUMINUM	
			MATERIAL	
5052-H32			TYPE & TEMPER	
			HEAT TREAT. SPEC.	
S404 YELL. IRIDITE			FINISH & SPEC. NO.	

MOUNT INSERTS AFTER FINISHING  
 USE MATERIAL THICKNESS FOR MAX. RADIUS  
 ON ALL BENDS UNLESS OTHERWISE SPECIFIED

SYM	DESCRIPTION	DATE	CH. NO.	DRAFTS	CHECKER	ENG. APP.
B	"K" SLOT WAS 3/8 X 3/4	11-16-61	7600	GH	LD	
A	J) WAS 5/32 X 5/16 SLOT	12-12-61	6053	L.H.	LD	

UNLESS OTHERWISE SPECIFIED:  
 DIMENSIONS ARE IN INCHES  
 TOLERANCES ON FRACTIONS ± 1/64 DECIMALS ± .005 ANGLES ± 1/2°

SCALE: (DO NOT SCALE)  
 MAXIMUM ALLOWABLE TOLERANCES HAVE BEEN DETERMINED AND ANY DEVIATIONS WILL BE CAUSE FOR REJECTION. REMOVE ALL BURRS AND SHARP EDGES

1	CHG-2	MF/RF	5-24-61
REQ. PER UNIT	MODEL	SECTION	ASS'Y. NO.
			DATE

THE TECHNICAL MATERIEL CORP.  
 MAMARONECK, NEW YORK  
 CHASSIS, 4th R.F. SECTION  
 DRAWN: MAF  
 CHECKER: JCB  
 FINAL APPROVAL: [Signature]  
 MS-2595 B