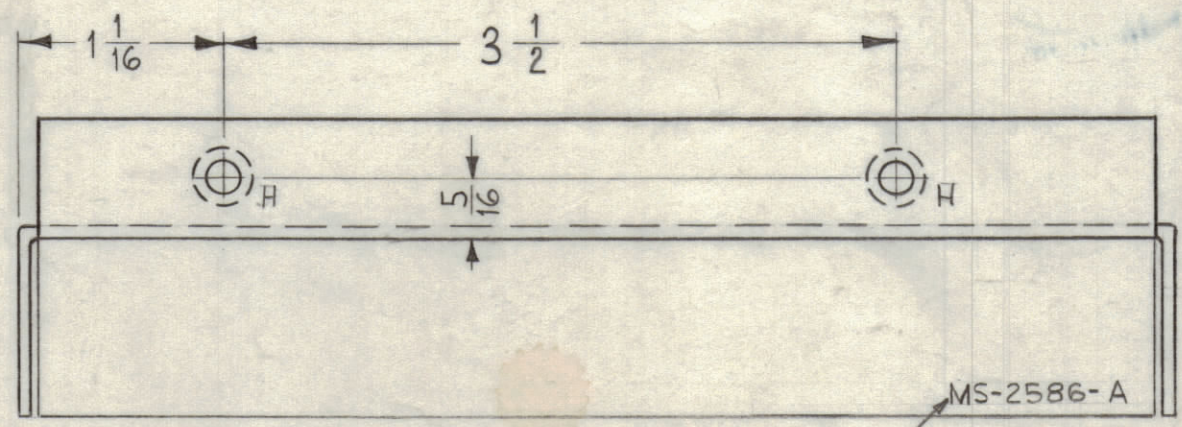
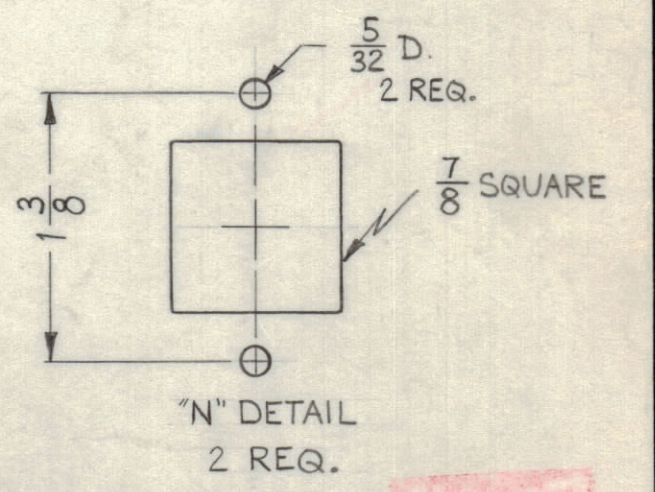
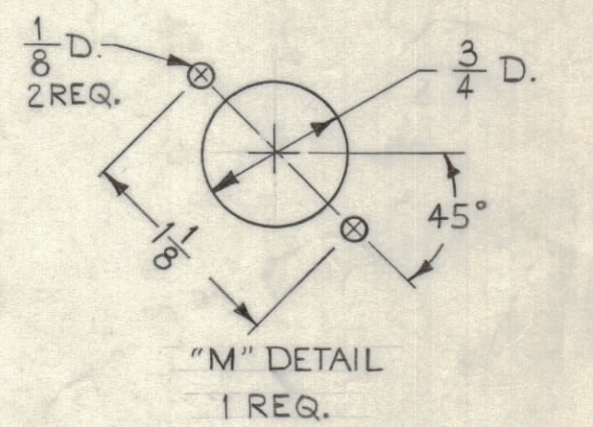
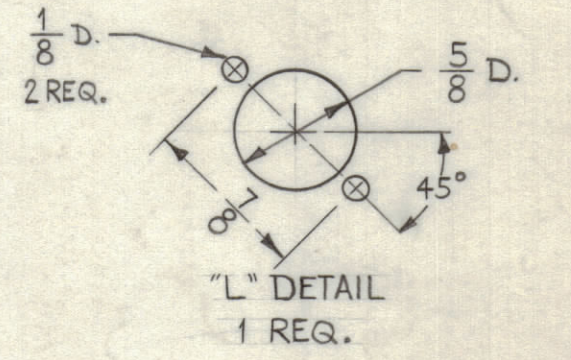
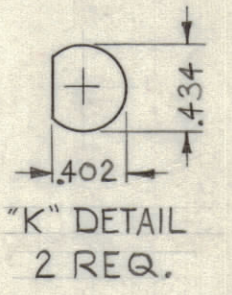


- A ~ 1/8" DIA. 13 REQ.
- B ~ 5/32" DIA. 7 "
- C ~ 5/16" DIA. 9 "
- D ~ 3/8" DIA. 1 "
- E ~ 7/16" DIA. 1 "
- F ~ 1/2" DIA. 2 "
- G ~ .161-.164 DIA. 4 "
- H ~ .191-.194 DIA. 2 "
- J ~ .191-.194 DIA. 2 "



METAL STAMP TMC PART NO. MS-2586-A
1/8" HIGH GOTHIC

MOUNT INSERTS AFTER FINISHING
USE MATERIAL THICKNESS FOR MAX. RADIUS ON ALL BENDS UNLESS OTHERWISE SPECIFIED

REF: LD-925(4)

2	2	NT-129-632-4	NUT, ROUND, SWAGE TYPE	H
4	1	NT-129-440-4	NUT, ROUND, SWAGE TYPE	G

REQ.	ITEM	PART NO.	DESCRIPTION	SYMBOL
		.064	STOCK SIZE	
		ALUMINUM	MATERIAL	
		5052-H32	TYPE & TEMPER	
		S404 YELLOW IRIDIATE	FINISH & SPEC. NO.	

THE TECHNICAL MATERIEL CORP.
MAMARONECK, NEW YORK
CHASSIS, OSCILLATOR

WAF. [Signature] [Signature] [Signature]
DRAWN CHECKED FINAL APPROVAL

MS-2586 B

UNLESS OTHERWISE SPECIFIED DIMENSIONS ARE IN INCHES AND INCLUDE CHEMICALLY APPLIED OR PLATED FINISHES

TOLERANCES: DECIMALS .X ± .05, .XX ± .01, .XXX ± .005; FRACTIONS ± 1/64 ANGLES ± 0° 30'

SYM	ZONE	DESCRIPTION	DATE	CH. NO.	DRAFTS	CHECKER	ENG. APP.
B	F5	DELETED ITEM 3&4, ADDED 2'G HOLES	8-27-62	7138	SG	[Signature]	[Signature]
A	B3; G1	Item (3) Was TE-164-1; (6) Holes Were .189 Dia; Item (4) Added	12-28-61	6115	J.E.	[Signature]	[Signature]

UNLESS OTHERWISE SPECIFIED:
DIMENSIONS ARE IN INCHES
TOLERANCES ON FRACTIONS ± 1/64 DECIMALS ± .005 ANGLES ± 1/2°

SCALE FULL (DO NOT SCALE)

MAXIMUM ALLOWABLE TOLERANCES HAVE BEEN DETERMINED AND ANY DEVIATIONS WILL BE CAUSE FOR REJECTION. REMOVE ALL BURRS & SHARP EDGES

1	CHG-2	OSC.	6-1-61
REQ. PER UNIT	MODEL	SECTION	DATE