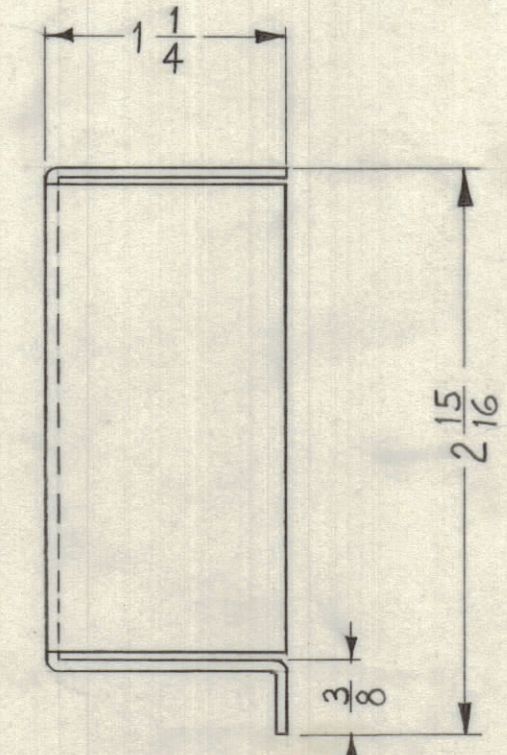
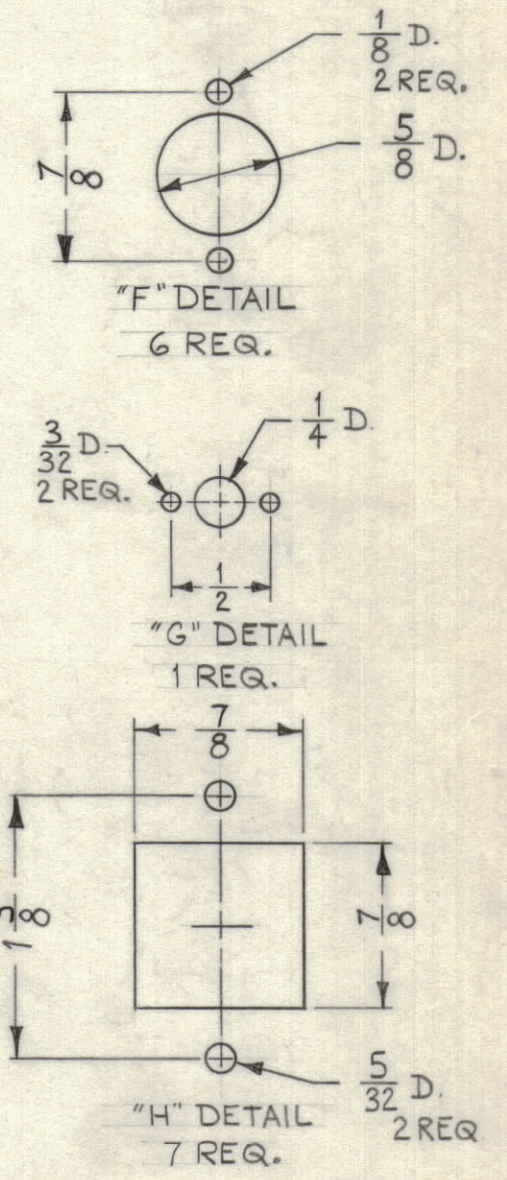


NOTICE TO PERSONS RECEIVING THIS DRAWING

THE TECHNICAL MATERIEL CORPORATION claims proprietary right in the material disclosed herein. This drawing is issued in confidence for engineering information only and may not be reproduced or used to manufacture anything shown herein without permission from THE TECHNICAL MATERIEL CORPORATION to the user. This drawing is loaned for mutual assistance and is subject to recall at any time.

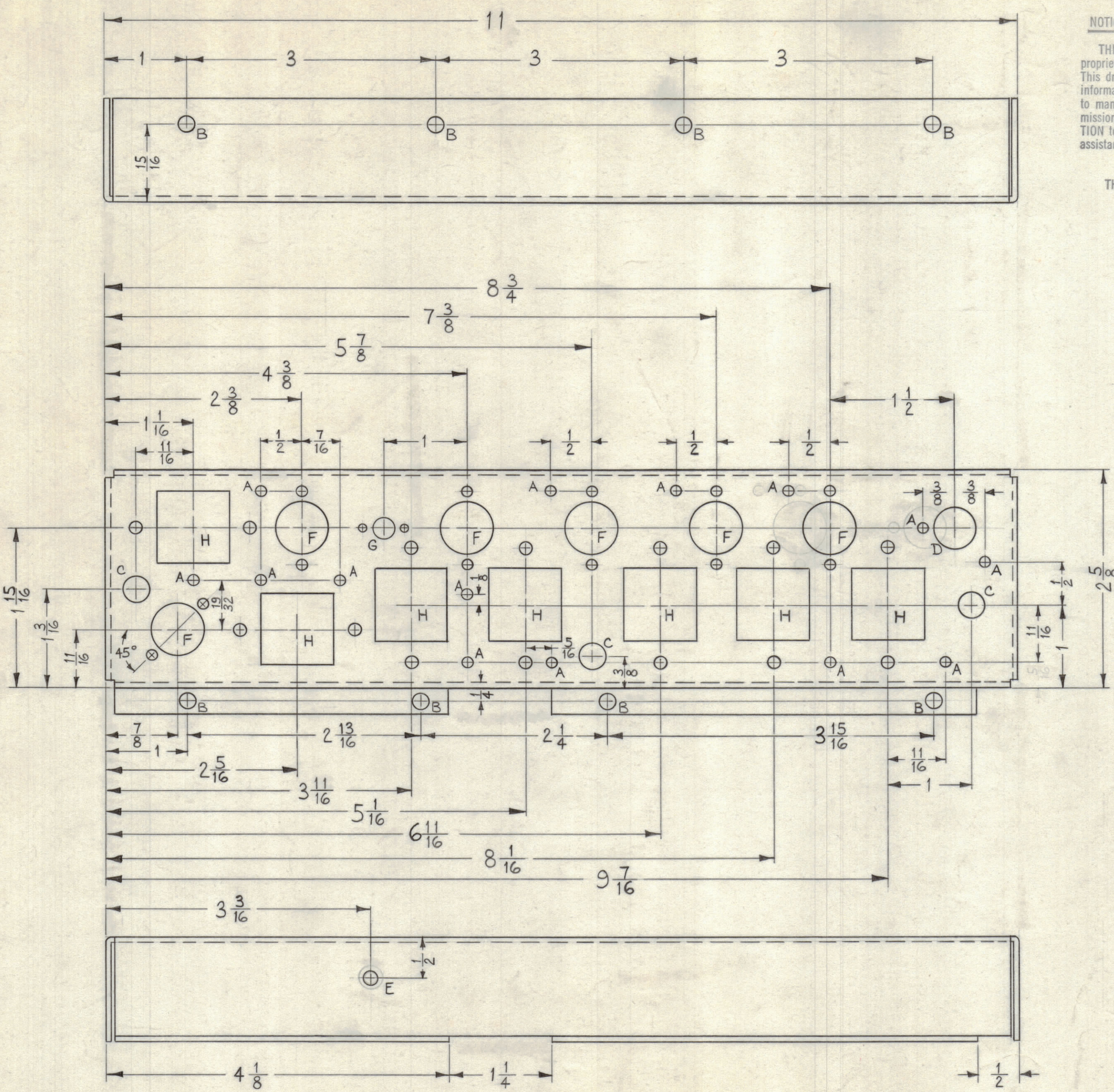
Property of:  
THE TECHNICAL MATERIEL CORPORATION  
MAMARONECK, NEW YORK

- A ~ 1/8" DIA. 14 REQ.
- B ~ 3/16" DIA. 8 "
- C ~ 5/16" DIA. 3 "
- D ~ 1/2" DIA. 1 "
- E ~ 11/64" DIA. SINK FOR 6-32 F.I.S. 1 REQ.



MOUNT INSERTS AFTER FINISHING  
USE MATERIAL THICKNESS FOR MAX. RADIUS  
ON ALL BENDS UNLESS OTHERWISE SPECIFIED

REF: LD-924 (4)



UNLESS OTHERWISE SPECIFIED  
DIMENSIONS ARE IN INCHES AND INCLUDE  
CHEMICALLY APPLIED OR PLATED FINISHES

DECIMALS X ± .05 XX ± .01 XXX ± .005	TOLERANCES	FRACTIONS ± 1/64 ANGLES ± 0° 30'
---	------------	---

OUT HERE  
QUANTITY  
2-46

SYM	ZONE	DESCRIPTION	DATE	CH. NO.	DRAFTS	CHECKER	ENG. APP.
UNLESS OTHERWISE SPECIFIED:							
DIMENSIONS ARE IN INCHES							
TOLERANCES ON							
FRACTIONS ± 1/64		DECIMALS ± .005		ANGLES ± 1/2°			
SCALE FULL (DO NOT SCALE).			MAXIMUM ALLOWABLE TOLERANCES HAVE BEEN DETERMINED AND ANY DEVIATIONS WILL BE CAUSE FOR REJECTION. REMOVE ALL BURRS & SHARP EDGES				

REQ. PER UNIT	MODEL	SECTION	ASS'Y. NO.	DATE
1	CHG-2	I.F.		5-26-61

REQ. ITEM	PART NO.	DESCRIPTION	SYMBOL
	.064	THE TECHNICAL MATERIEL CORP. MAMARONECK, NEW YORK	
	ALUMINUM	CHASSIS, I.F.	
	5052-H32		
	S404 YELLOW IRIDITE		

DRAWN M.A.F.	CHECKED G.C.R.	FINAL APPROVAL S.D.
ELEC. DES. APP.		MECH. DES. APP.
SHEET		OF