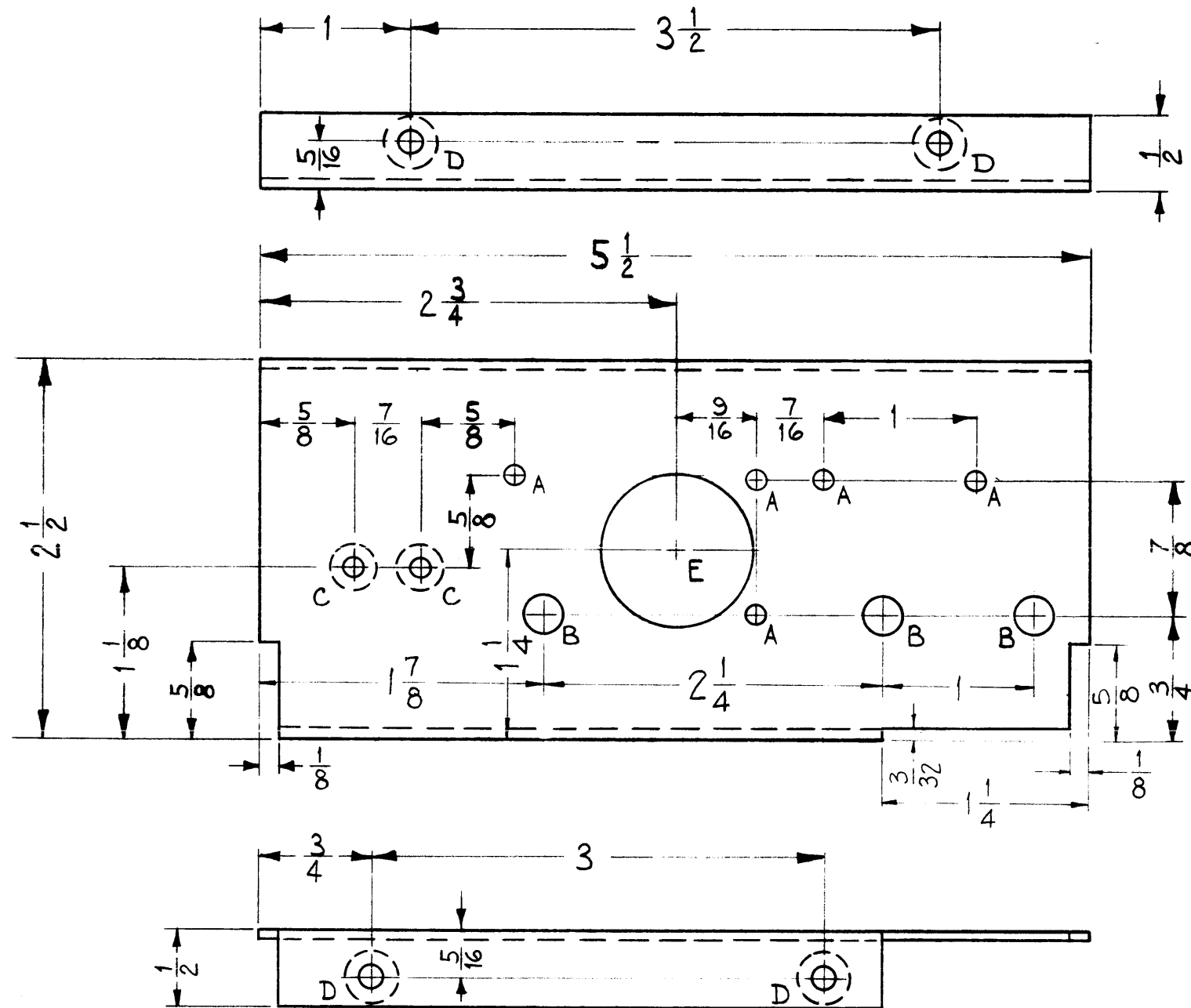
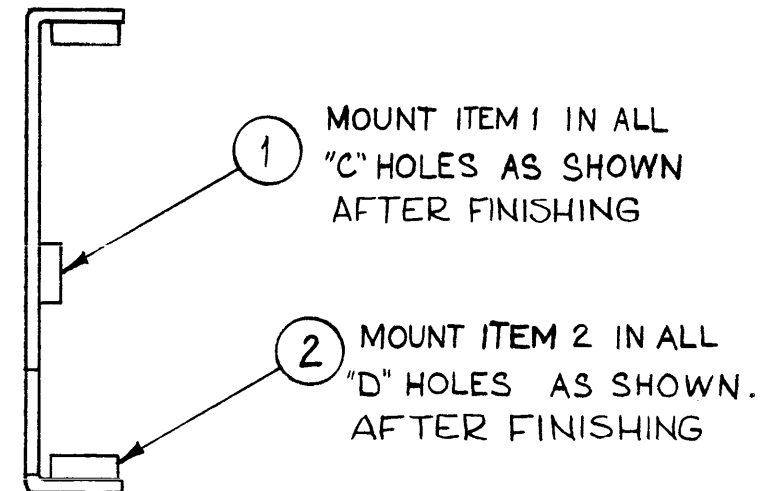


MS-2578



- A ~ 1/8 DIA. 5 REQ.
- B ~ 1/4 DIA. 3 "
- C ~ .161-.164 DIA. 2 "
- D ~ .191-.194 DIA. 4 "
- E ~ 1" DIA. 1 "



MOUNT INSERTS AFTER FINISHING

USE MATERIAL THICKNESS FOR MAX. RADIUS ON ALL BENDS UNLESS OTHERWISE SPECIFIED

THIS DRAWING IS LOANED TO YOU FOR YOUR INFORMATION ONLY. IT IS NOT TO BE REPRODUCED OR USED FOR ANY OTHER PURPOSE WITHOUT THE WRITTEN PERMISSION OF THE TECHNICAL MATERIEL CORPORATION. THIS DRAWING IS LOANED TO YOU FOR YOUR INFORMATION ONLY. IT IS NOT TO BE REPRODUCED OR USED FOR ANY OTHER PURPOSE WITHOUT THE WRITTEN PERMISSION OF THE TECHNICAL MATERIEL CORPORATION.

Property of:
THE TECHNICAL MATERIEL CORPORATION
MAMARONECK, NEW YORK

REF: LD-920 (1)

REQ.	ITEM	PART NO.	DESCRIPTION	SYMBOL
4	2	NT-129-632-4	NUT, ROUND, SWAGE TYPE	
2	1	NT-129-440-4	NUT, ROUND, SWAGE TYPE	
.064			THE TECHNICAL MATERIEL CORP. MAMARONECK, NEW YORK	
ALUMINUM			SHIELD, R.F. SYNTHESIZER	
5052-H32			W.F.	J.C.B.
TYPE & TEMPER		HEAT TREAT. SPEC.	DRAWN	CHECKER
S404 YELLOW IRIDITE			S.D.	J.C.B.
FINISH & SPEC. NO.			ELEC. DES. APP.	MECH. DES. APP.
				MS-2578

SYM	DESCRIPTION	DATE	CH. NO.	DRAFTS	CHECKER	ENG. APP.
UNLESS OTHERWISE SPECIFIED:						
DIMENSIONS ARE IN INCHES						
TOLERANCES ON FRACTIONS ± 1/64 DECIMALS ± .005 ANGLES ± 1/2°						
SCALE: (DO NOT SCALE)						
MAXIMUM ALLOWABLE TOLERANCES HAVE BEEN DETERMINED AND ANY DEVIATIONS WILL BE CAUSE FOR REJECTION. REMOVE ALL BURRS AND SHARP EDGES						
1	CHG. 2	SYNTH.				5-23-61
REQ. PER UNIT	MODEL	SECTION	ASS'Y. NO.	DATE	USED ON	