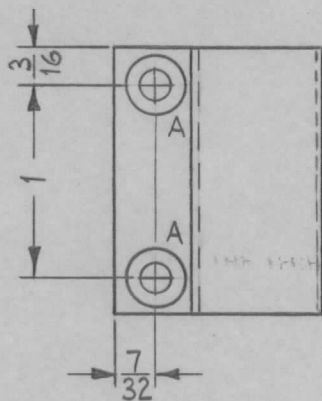


REQ. PER UNIT	USED ON			MS-2575	A
	MODEL	ASS'Y. NO.	DATE		
1	CHG-2	OVEN	5-18-61		

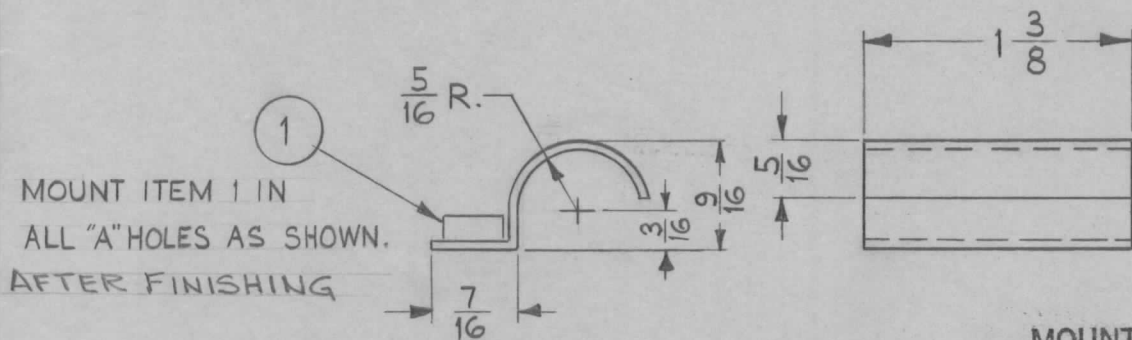


A-.161-.164 DIA. 2 REQ.

NOTICE TO PERSONS RECEIVING THIS DRAWING

THE TECHNICAL MATERIEL CORPORATION claims proprietary right in the material disclosed hereon. This drawing is issued in confidence for engineering information only and may not be reproduced or used to manufacture anything shown hereon without permission from THE TECHNICAL MATERIEL CORPORATION to the user. This drawing is loaned for mutual assistance and is subject to recall at any time.

Property of:
THE TECHNICAL MATERIEL CORPORATION
MAMARONECK, NEW YORK



MOUNT ITEM 1 IN ALL "A" HOLES AS SHOWN. AFTER FINISHING

MOUNT INSERTS AFTER FINISHING

							2	1	NT-129-440-3	NUT, ROUND, SWAGE TYPE	
							REQ.	ITEM	PART NO.	DESCRIPTION	SYMBOL
									.051	THE TECHNICAL MATERIEL CORP.	
									STOCK SIZE	MAMARONECK, NEW YORK	
									ALUMINUM	CLAMP, THERMOSTAT	
									MATERIAL		
									5052-H32	W.F.	J.H.
									TYPE & TEMPER	DRAWN	CHECKED
									HEAT TREAT. SPEC.		FINAL APPROVAL
									S404 YELL. IRIDITE	J.D.	W.B.
									FINISH & SPEC. NO.	ELEC. DES. APP	MECH. DES. APP
											MS-2575
											A

A 1 NT-129-440-3 WAS NT-129-440-4

10/17/63 10225 [Signature] [Signature]

TOLERANCES
DEC. DIM. ±
FRAC. DIM. ± 1/64
ANGULAR DIM. ±

SCALE: FULL (DO NOT SCALE).
MAXIMUM ALLOWABLE TOLERANCES HAVE BEEN DETERMINED AND ANY DEVIATIONS WILL BE CAUSE FOR REJECTION. REMOVE ALL BURRS AND SHARP EDGES