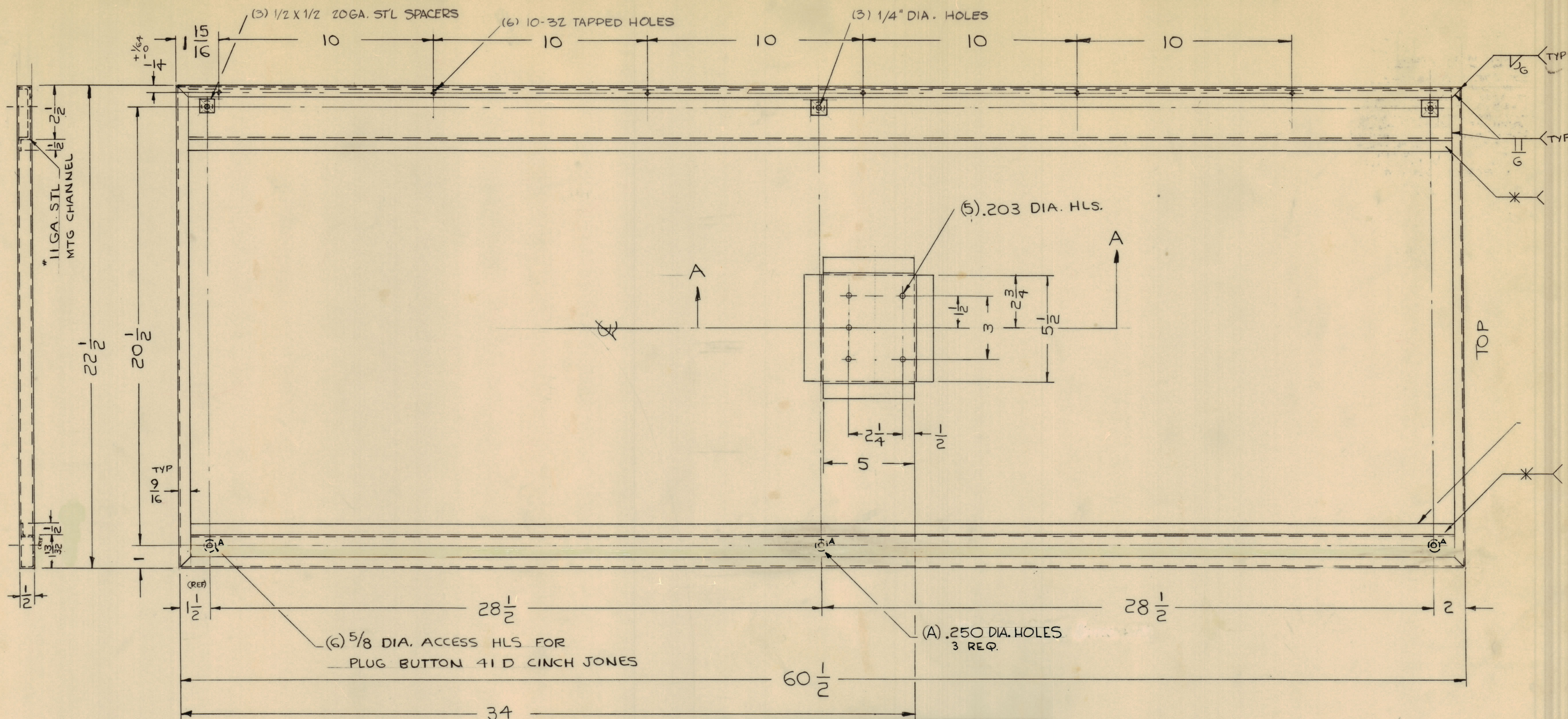


NOTICE TO PERSONS RECEIVING THIS DRAWING

THE TECHNICAL MATERIEL CORPORATION claims proprietary right in the material disclosed hereon. This drawing is issued in confidence for engineering information only and may not be reproduced or used to manufacture anything shown hereon without permission from THE TECHNICAL MATERIEL CORPORATION to the user. This drawing is loaned for mutual assistance and is subject to recall at any time.

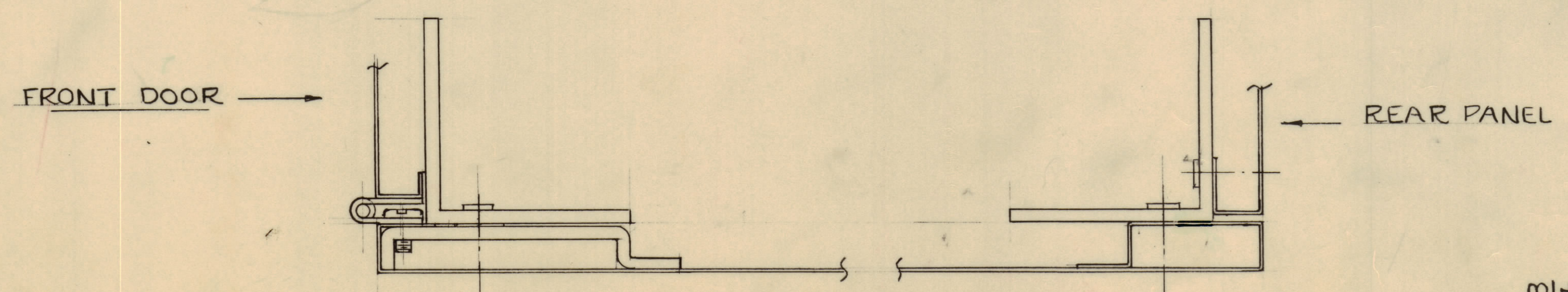
Property of:
THE TECHNICAL MATERIEL CORPORATION
MAMARONECK, NEW YORK



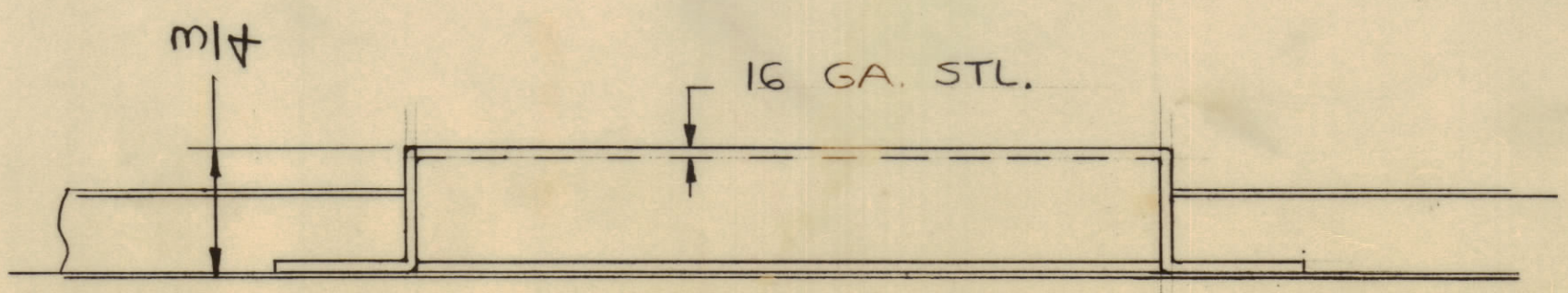
PART NO.	DESCRIPTION
MS-2565-1	LEFT SIDE SHOWN
MS-2565-2	RIGHT SIDE OPPOSITE

MAT. ~ 20 GA. STL UNLESS OTHERWISE SPECIFIED

FINISH - S404 YELLOW TRITE
S114 ~ ZINC CHROMATE PRIMER
S220 ~ TMC RCAF BLUE GRAY SMOOTH ENAMEL



TYP SECTION SHOWING RIGHT SIDE PANEL MOUNTED TO FRAME



SECTION A-A

UNLESS OTHERWISE SPECIFIED	
DIMENSIONS ARE IN INCHES AND INCLUDE CHEMICALLY APPLIED OR PLATED FINISHES	
DECIMALS	FRACTIONS
X ± .05	± 1/64
XX ± .01	ANGLES
XXX ± .005	± 0° 30'

BY	ZONE	DESCRIPTION	DATE	CH. NO.	DRAFTS	CHECKER	ENG. APP.
B	D-10	DIM. 19/32 DELETED (Left Lip)	1-25-62	6264	G.S.		
	D-5	REF. LINE DELETED (Bottom Face View)					
A	D4	.250 DIA. HOLES WERE .218 OVAL SLOT (MTG. HOLES)	1-4-62	6161	JA		

UNLESS OTHERWISE SPECIFIED: SCALE DO NOT SCALE

MAXIMUM ALLOWABLE TOLERANCES HAVE BEEN DETERMINED AND ANY DEVIATIONS WILL BE CAUSE FOR REJECTION. REMOVE ALL BURRS & SHARP EDGES

REQ. PER UNIT	MODEL	SECTION	ASSY. NO.	DATE	TYPE & TEMPER	HEAT TREAT. SPEC.	FINISH & SPEC. NO.	SYMBOL																																																
	TER25K/50			9-28-61																																																				
<table border="1"> <thead> <tr> <th colspan="2">PART NO.</th> <th colspan="2">DESCRIPTION</th> <th colspan="2">SYMBOL</th> </tr> </thead> <tbody> <tr> <td colspan="2">AS NOTED</td> <td colspan="2">THE TECHNICAL MATERIEL CORP. MAMARONECK, NEW YORK</td> <td colspan="2"></td> </tr> <tr> <td colspan="2">AS NOTED</td> <td colspan="2">PANEL, LEFT AND RIGHT</td> <td colspan="2"></td> </tr> <tr> <td colspan="2">MATERIAL</td> <td colspan="2">M.N.</td> <td colspan="2">20/125</td> </tr> <tr> <td colspan="2"></td> <td colspan="2">DRAWN</td> <td colspan="2">CHECKED</td> </tr> <tr> <td colspan="2"></td> <td colspan="2">aa</td> <td colspan="2">MS-2565B</td> </tr> <tr> <td colspan="2"></td> <td colspan="2">ELEC. DES. APP.</td> <td colspan="2">MECH. DES. APP.</td> </tr> <tr> <td colspan="2"></td> <td colspan="2">SHEET</td> <td colspan="2">OF</td> </tr> </tbody> </table>								PART NO.		DESCRIPTION		SYMBOL		AS NOTED		THE TECHNICAL MATERIEL CORP. MAMARONECK, NEW YORK				AS NOTED		PANEL, LEFT AND RIGHT				MATERIAL		M.N.		20/125				DRAWN		CHECKED				aa		MS-2565B				ELEC. DES. APP.		MECH. DES. APP.				SHEET		OF		
PART NO.		DESCRIPTION		SYMBOL																																																				
AS NOTED		THE TECHNICAL MATERIEL CORP. MAMARONECK, NEW YORK																																																						
AS NOTED		PANEL, LEFT AND RIGHT																																																						
MATERIAL		M.N.		20/125																																																				
		DRAWN		CHECKED																																																				
		aa		MS-2565B																																																				
		ELEC. DES. APP.		MECH. DES. APP.																																																				
		SHEET		OF																																																				

MS-2565 B