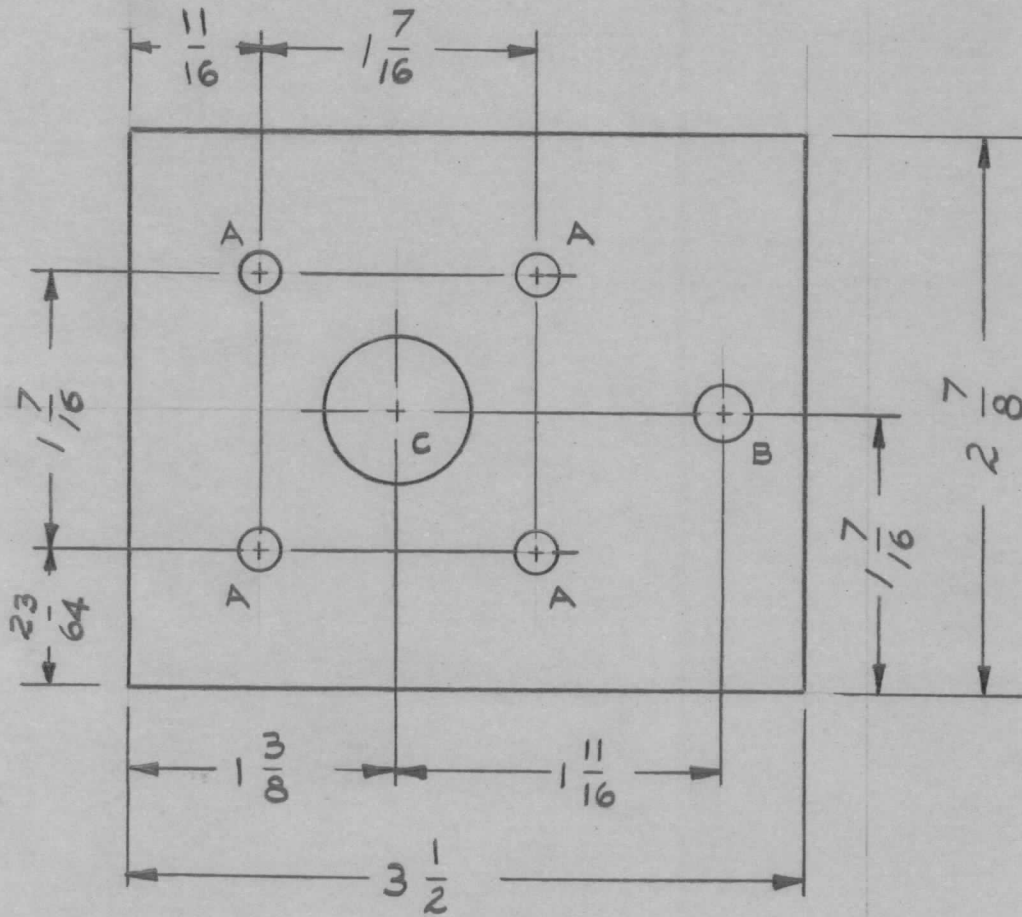


REQ. PER. UNIT	USED ON		
	MODEL	ASS'Y. NO.	DATE
1	TER-3500(70)		3-17-61

MS-2542



NOTE:

TO MODIFY TER-3500(70)
FOR USE WITH QDS
RECEPTACLE (JJ-161 IN
LIEU OF QDL RECEPTACLE
JJ-137)

HOLES	REQ'D
A ~ 13/64 DIA. DRILL THRU	4
B ~ 9/32 DIA. DRILL THRU	1
C ~ 3/4 DIA. DRILL THRU	1

DIMENSIONS ARE IN INCHES

REQ.	ITEM	PART NO.	DESCRIPTION		SYMBOL							
		.081	THE TECHNICAL MATERIEL CORP.									
		STOCK SIZE	MAMARONECK, NEW YORK									
		ALUMINUM	CONNECTOR ADAPTER PLATE									
		MATERIAL	P/O SYM - 1023									
ISSUE	ITEM	CHANGED FROM	DATE	CH. NO.	DRAFTS	CHECKER	ENG. APP.					
TOLERANCES			SCALE: FULL			5052-H32		<i>R.d.l.</i>	<i>Joe</i>	<i>FOS</i>		
DEC. DIM. ± .005			MAXIMUM ALLOWABLE TOLERANCES HAVE BEEN DETERMINED AND ANY DEVIATIONS WILL BE CAUSE FOR REJECTION. REMOVE ALL BURRS AND SHARP EDGES			TYPE & TEMPER		HEATTREAT. SPEC.		DRAWN	CHECKED	FINAL APPROVAL
FRAC. DIM. ± 1/64						5404 YELLOW IRIDITE						
ANGULAR DIM. ± 1/2°						FINISH & SPEC. NO.		ELEC. DES. APP	MECH. DES. APP			MS-2542