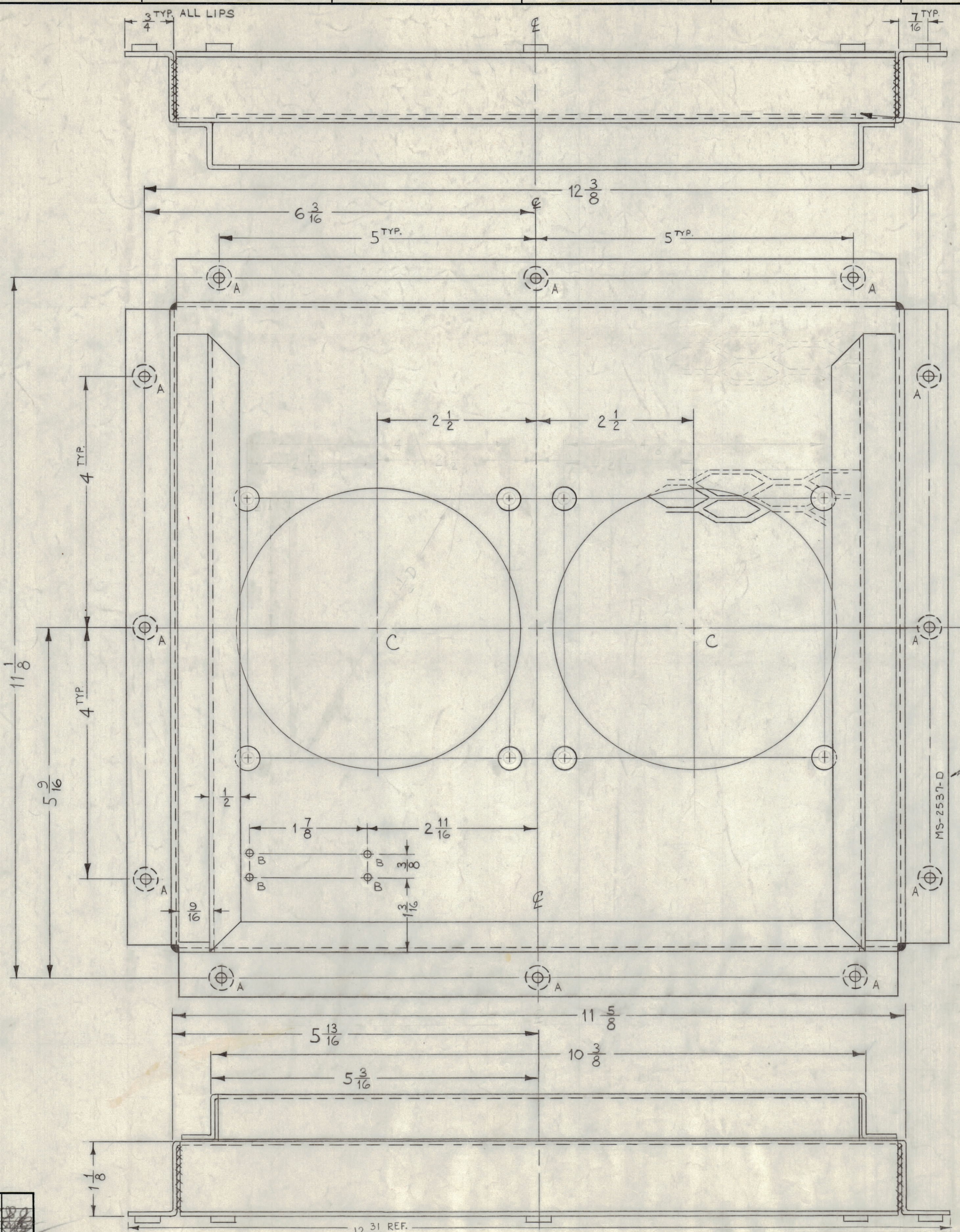
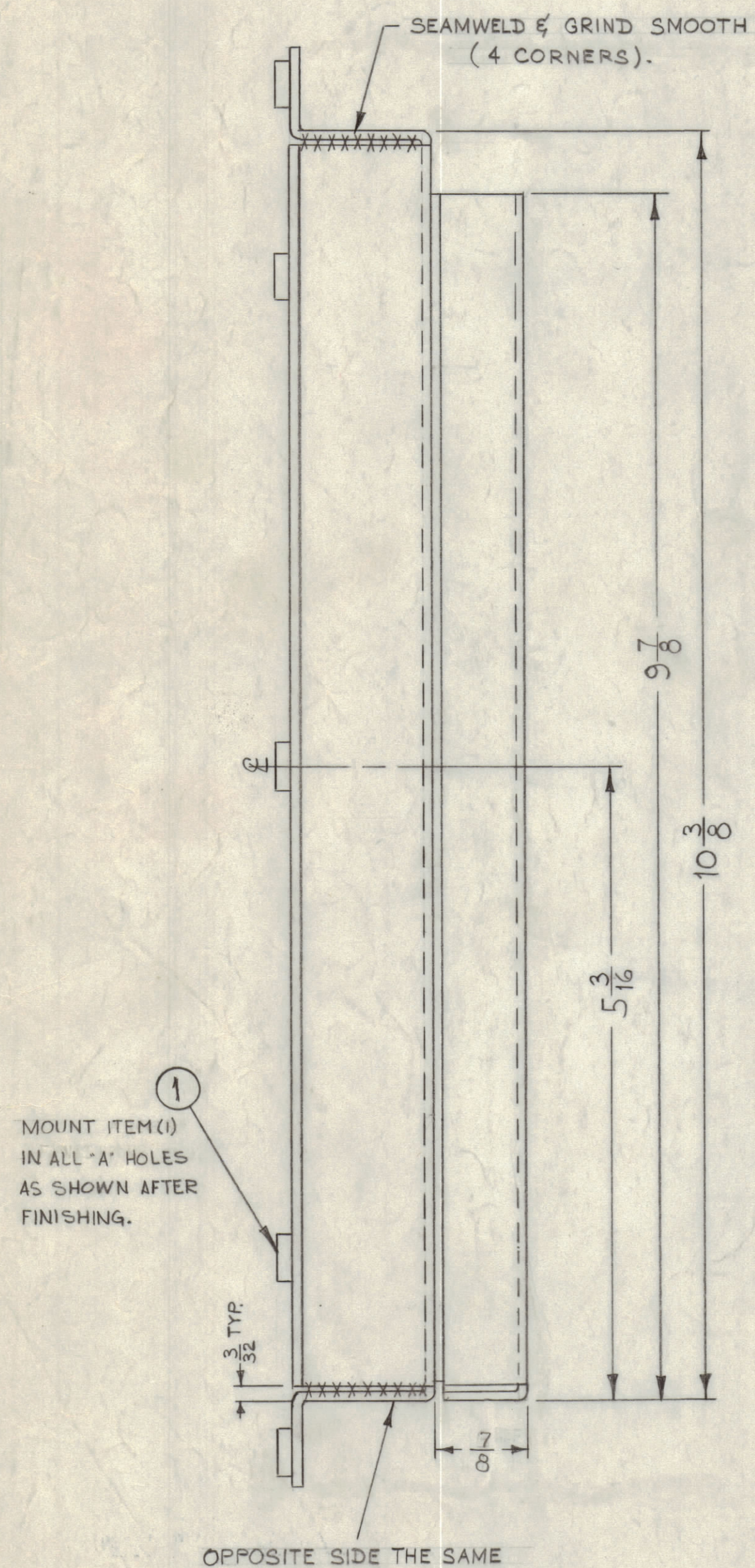


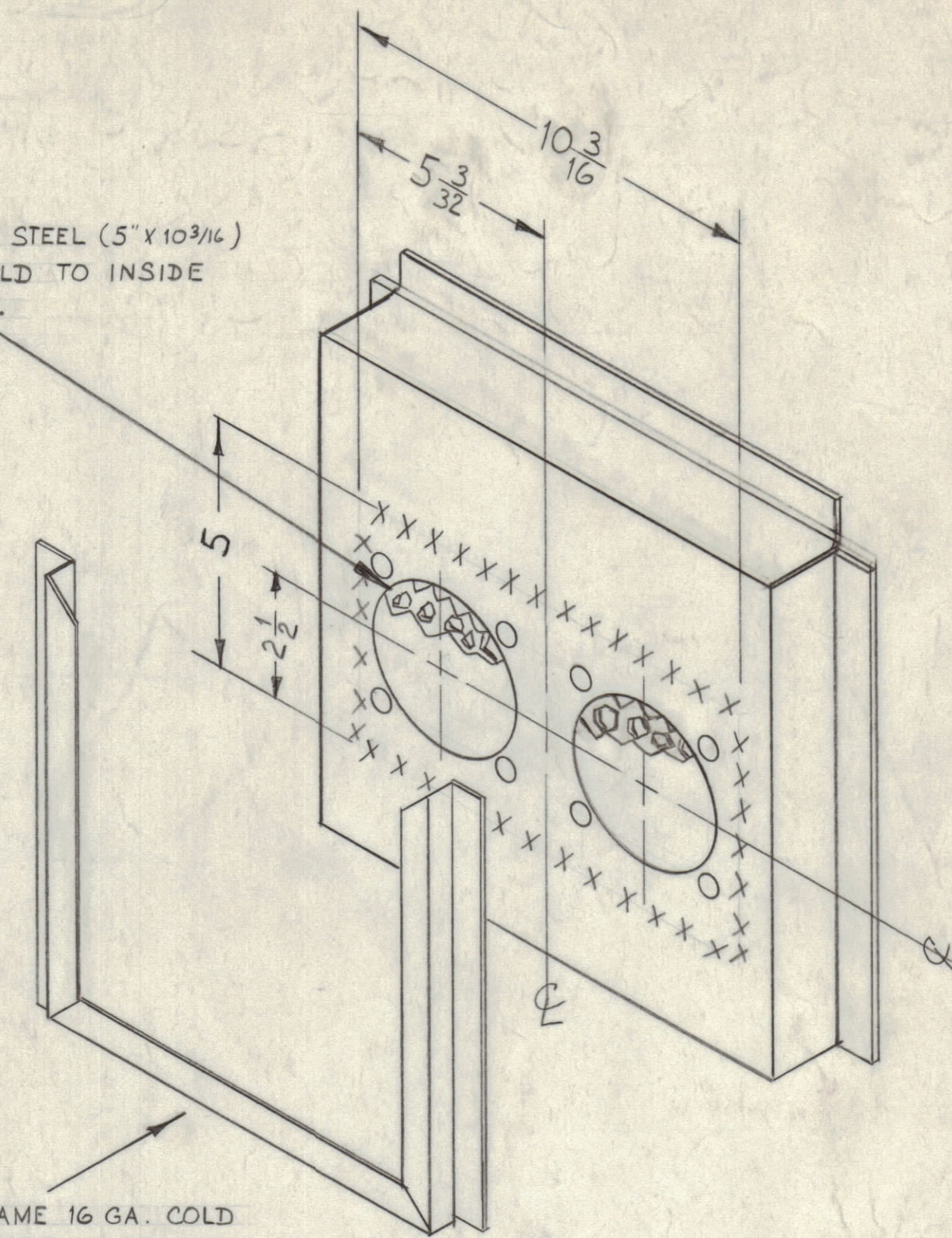
NOTICE TO PERSONS RECEIVING THIS DRAWING

THE TECHNICAL MATERIEL CORPORATION claims proprietary right in the material disclosed herein. This drawing is issued in confidence for engineering information only and may not be reproduced or used to manufacture anything shown herein without permission from THE TECHNICAL MATERIEL CORPORATION to the user. This drawing is loaned for mutual assistance and is subject to recall at any time.

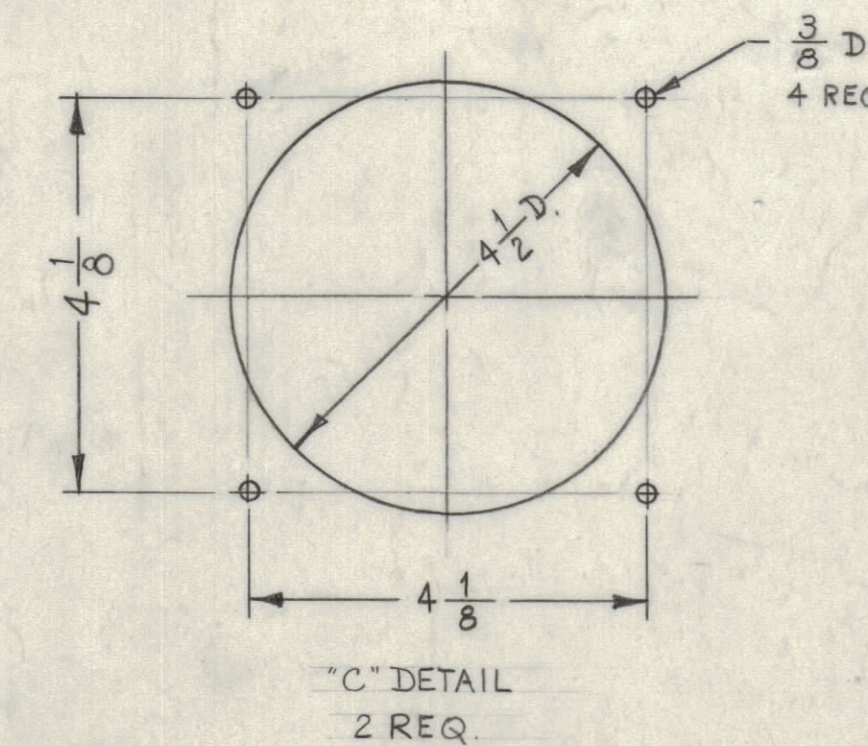
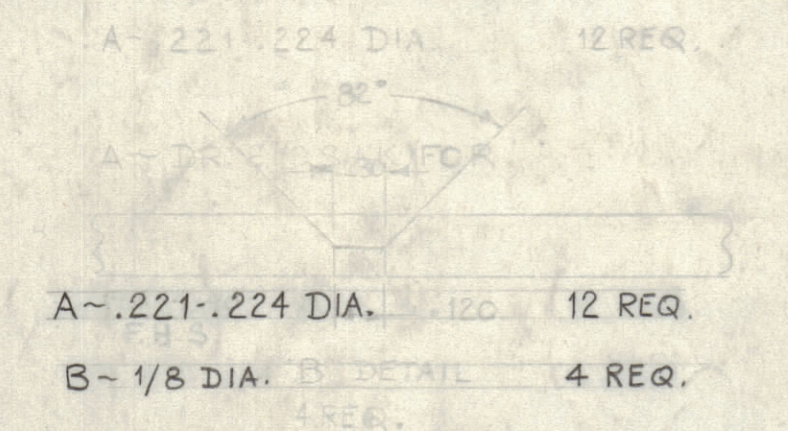
Property of:
THE TECHNICAL MATERIEL CORPORATION
MAMARONECK, NEW YORK



18 GA., 9/32 X 1" BLOWN STEEL (5" X 10 9/16)
EXPANDED METAL. SPOTWELDED TO INSIDE
OF CHASSIS AS SHOWN.



FILTER FRAME 16 GA. COLD
ROLLED STEEL; SPOTWELDED
TO CHASSIS.



METAL STAMP TMC PART
NO. 1/8 HIGH, GOTHIC

NOTE:
USE MATERIAL THICKNESS FOR MAX. RADIUS ON ALL
BENDS UNLESS OTHERWISE SPECIFIED.

FINISH NOTE:
PAINT: S114-ZINC CHROMATE PRIMER
S520-BLUE-GRAY TEXTURED
VINYL PAINT

12	1	NT-129-832-4	NUT, ROUND SWAGE TYPE	A
REQ. ITEM	PART NO.	DESCRIPTION		SYMBOL
16 GA.		THE TECHNICAL MATERIEL CORP.		
STEEL		MAMARONECK, NEW YORK		
MATERIAL		CHASSIS, BLOWER		
TYPE & TEMPER		HEAT TREAT. SPEC.		
SEE NOTE		FINISH & SPEC. NO.		
KLEC. DES. APP.		MECH. DES. APP.		
SHEET		OF		

1	RAK-16	LD-1301	4-29-63
1	RAK-19	LD-892 (4)	7-25-62
1	RAK-12	LD-1131 (4)	7-25-62
1	RAK-20	LD-886 (4)	12-19-61
1	RAK-11	LD-886 (4)	3-15-61
REQ. PER UNIT	MODEL	SECTION	DATE
USED ON			

D	H	FINISH WAS S220	6-17-64	11556	A.M.
C	AS	RAK-16 ADDED TO USED ON BLOCK	4-29-63	8872	
B	CS, C10	3/8 D HOLES WERE 3/16 D 1/8 DIA WAS 3/4	1-3-63	7946	
A	AS, B2	RAK-19 #12 ADDED TO REF CHART FINISH WAS S-254	7-25-62	6937	
SYM	ZONE	DESCRIPTION	DATE	CH. NO.	DRAFTS
UNLESS OTHERWISE SPECIFIED:			SCALE FULL (DO NOT SCALE)		
DIMENSIONS ARE IN INCHES			MAXIMUM ALLOWABLE TOLERANCES HAVE BEEN DETERMINED AND ANY DEVIATIONS WILL BE CAUSE FOR REJECTION. REMOVE ALL BURRS & SHARP EDGES		
TOLERANCES ON FRACTIONS ± 1/64			DECIMALS ± .005		
ANGLES ± 1/2°					

MS-2537 D