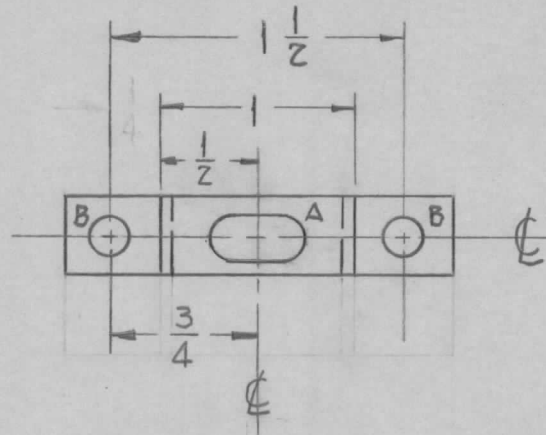
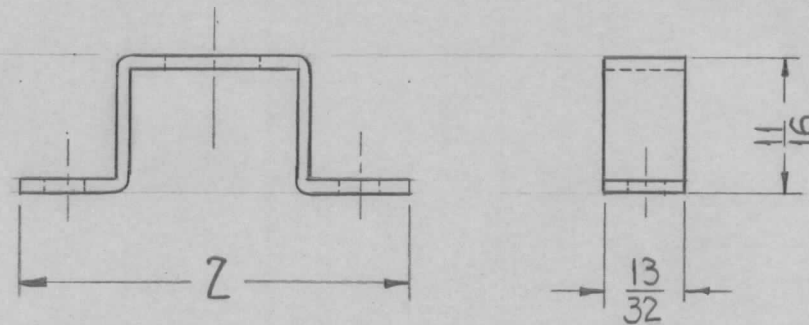


REQ. PER UNIT	USED ON			MS-2532
	MODEL	ASS'Y. NO.	DATE	
	KIT-105		9-25-61	



A - $\frac{1}{4} \times \frac{1}{2}$ SLOT 1 Req.
 B - $\frac{13}{64}$ DIA. 2 Req.



UNLESS OTHERWISE SPECIFIED
 DIMENSIONS ARE IN INCHES AND INCLUDE
 CHEMICALLY APPLIED OR PLATED FINISHES

DECIMALS	FRACTIONS
.X ± .05	± 1/64
.XX ± .01	ANGLES
.XXX ± .005	± 0° 30'

TOLERANCES

CUT HERE
 GUARANTEED
 2-66

ISSUE	ITEM	CHANGED FROM	DATE	CH. NO.	DRAFTS	CHECKER	ENG. APP.	REQ.	ITEM	PART NO.	DESCRIPTION	SYMBOL	
										16 GA.	THE TECHNICAL MATERIEL CORP. MAMARONECK, NEW YORK	BRACKET, TOP HAT	
										STOCK SIZE			
										STEEL			
										MATERIAL			
										H.R.	RUZZO	file	203
										TYPE & TEMPER	CHECKED	FINAL APPROVAL	
										COPPER FLASHED		MS-2532	
										FINISH & SPEC. NO.	ELEC. DES. APP	MECH. DES. APP	

DEC. DIM. ±
 FRAC. DIM. ±
 ANGULAR DIM. ±

SCALE:
 MAXIMUM ALLOWABLE TOLERANCES HAVE BEEN DETERMINED AND ANY DEVIATIONS WILL BE CAUSE FOR REJECTION.
 REMOVE ALL BURRS AND SHARP EDGES