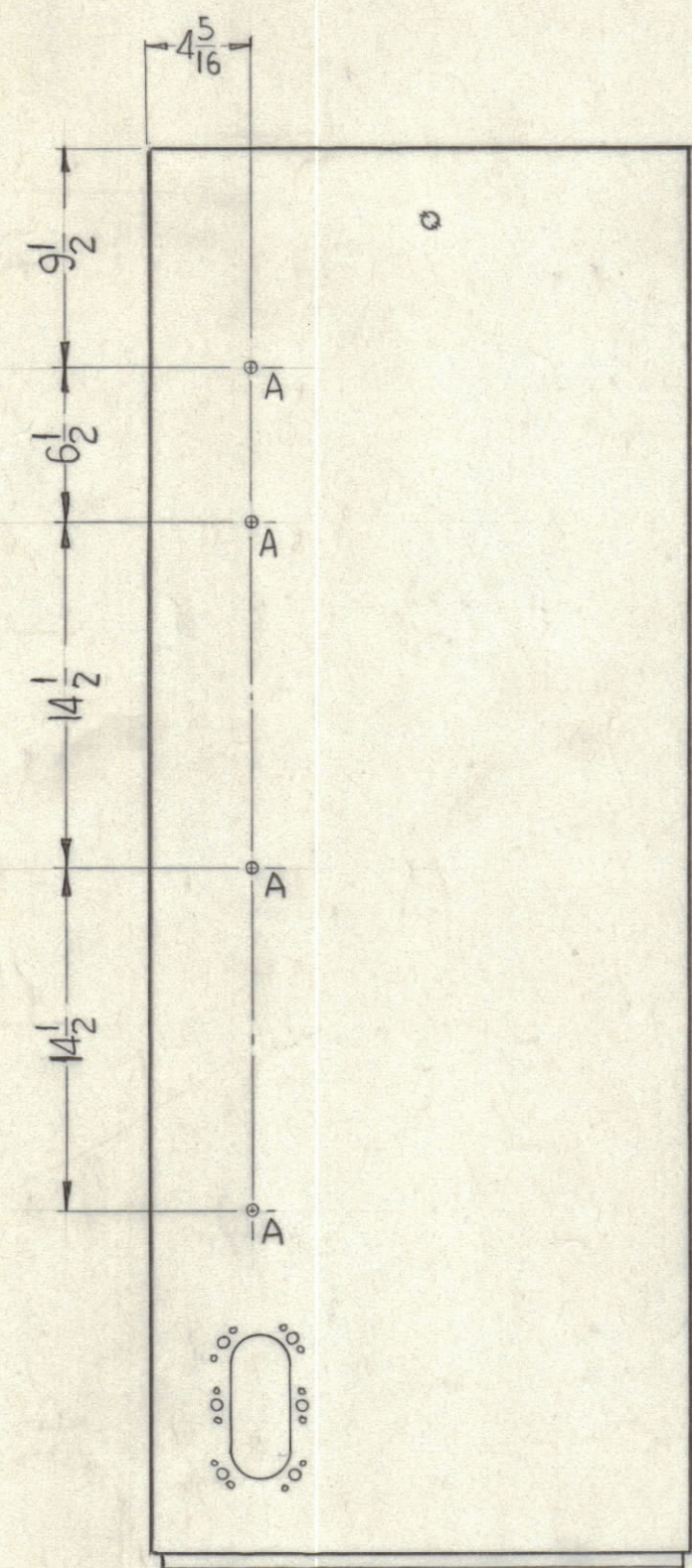


NOTICE TO PERSONS RECEIVING THIS DRAWING

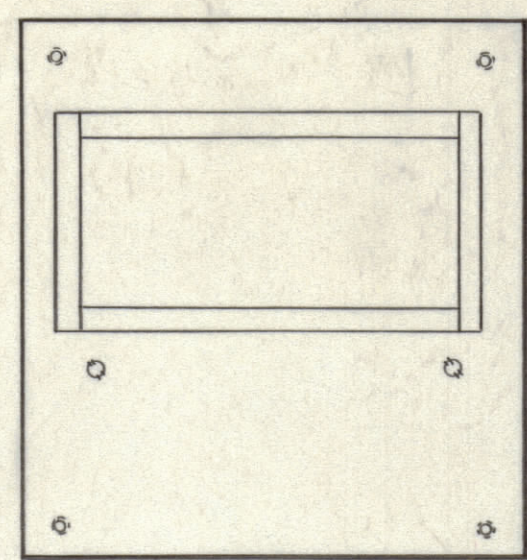
THE TECHNICAL MATERIEL CORPORATION claims proprietary right in the material disclosed hereon. This drawing is issued in confidence for engineering information only and may not be reproduced or used to manufacture anything shown hereon without permission from THE TECHNICAL MATERIEL CORPORATION to the user. This drawing is loaned for mutual assistance and is subject to recall at any time.

Property of:
THE TECHNICAL MATERIEL CORPORATION
MAMARONECK, NEW YORK

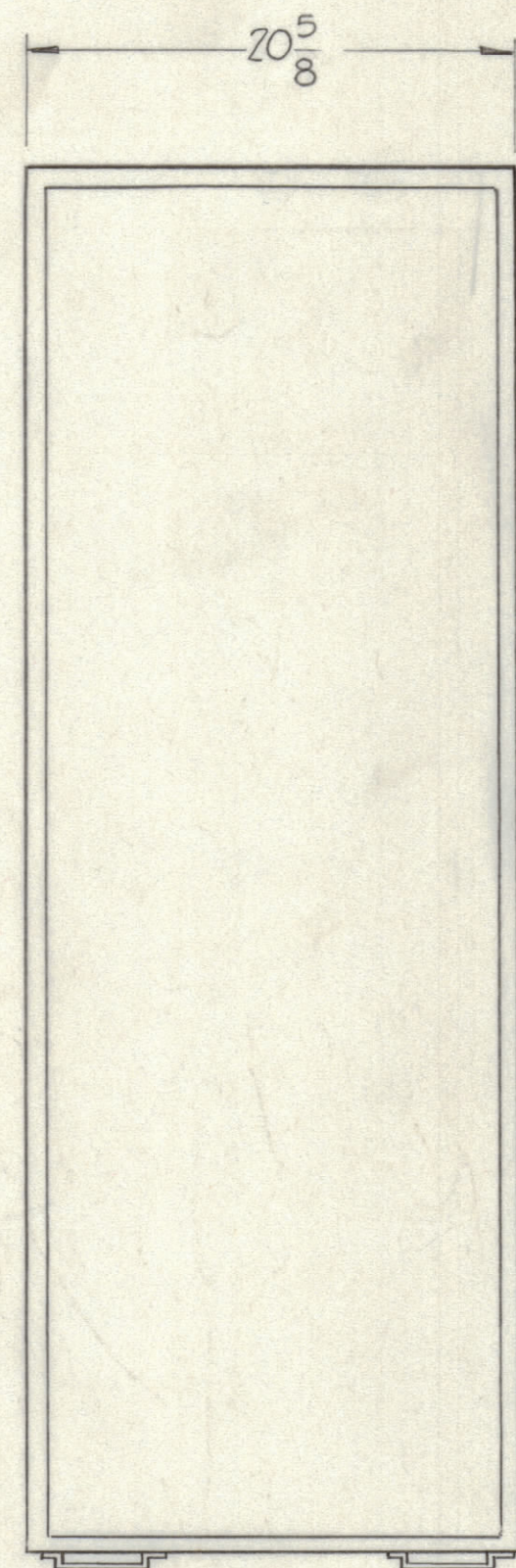
HOLES ~ REQ'D
A ~ 13/64 DIA. (.203) 12
B ~ 1/4 DIA. (.25) 4



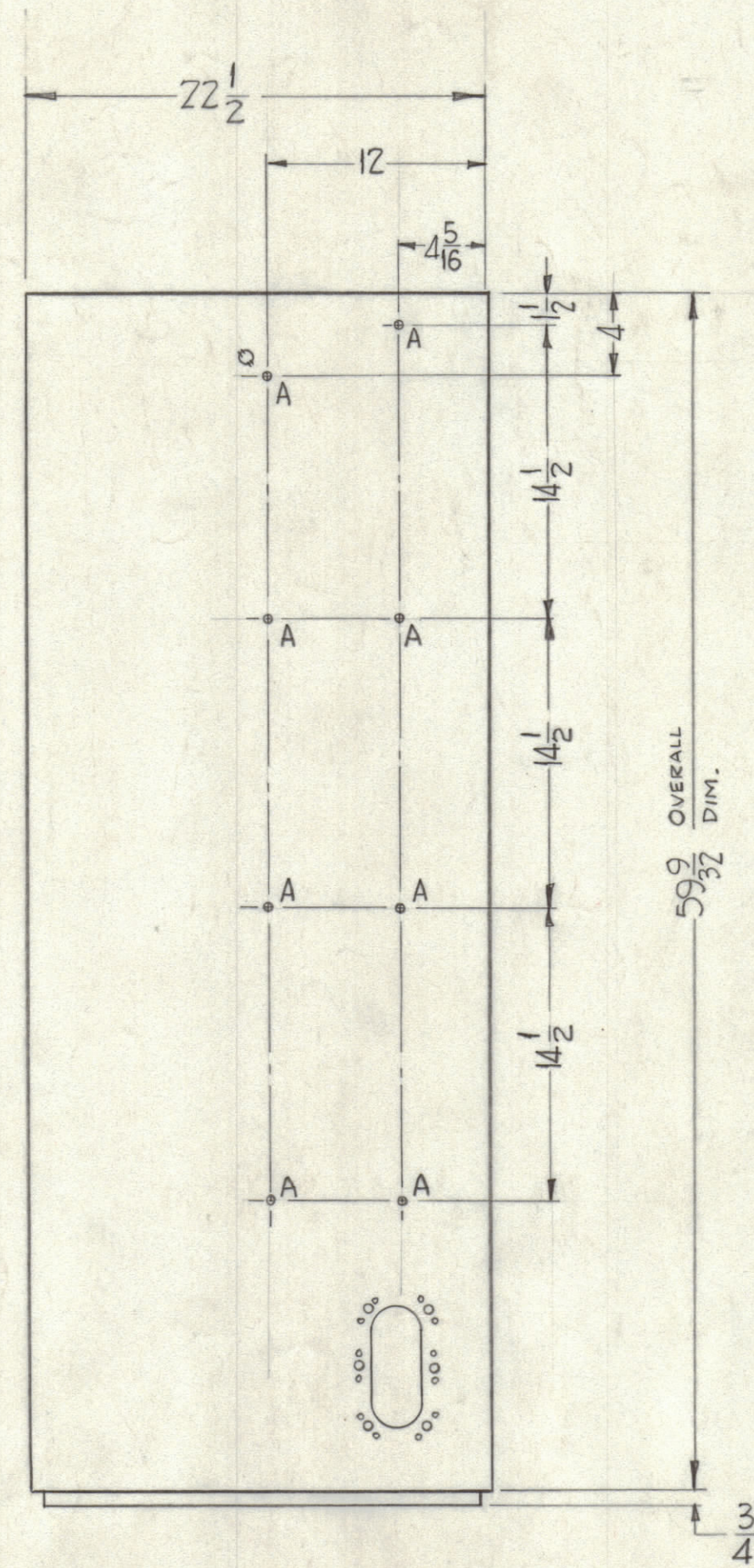
LEFT SIDE



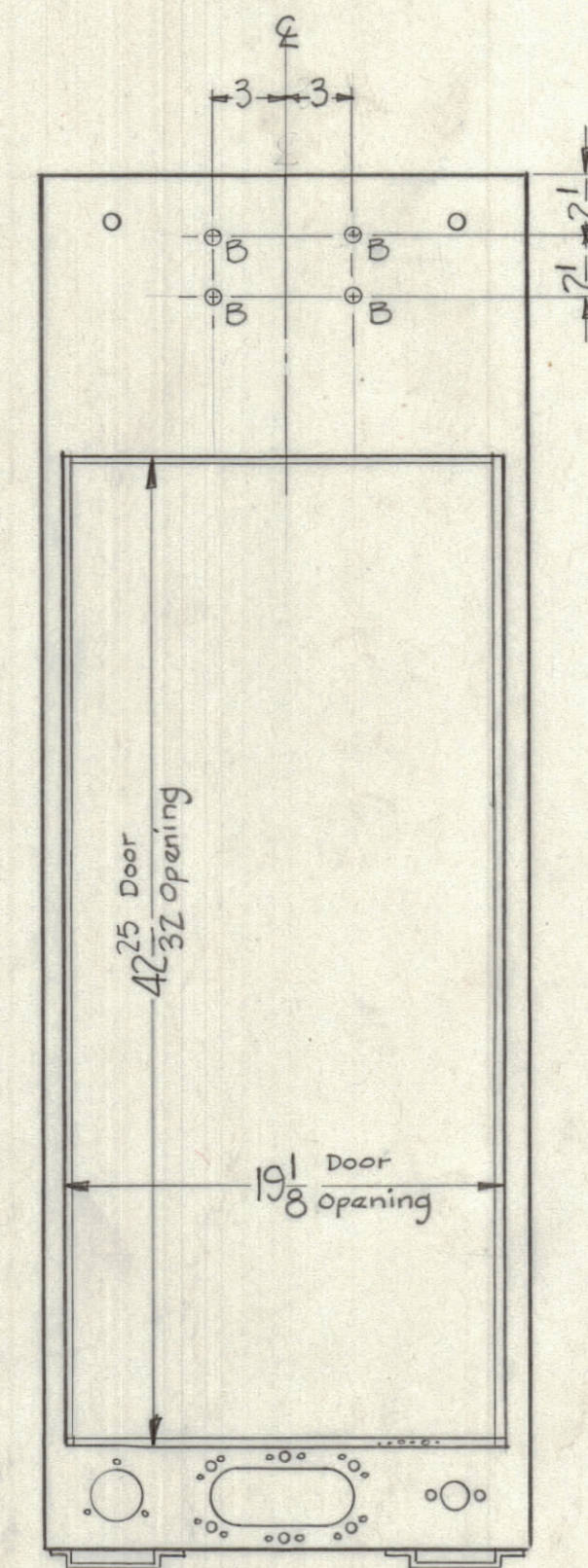
TOP



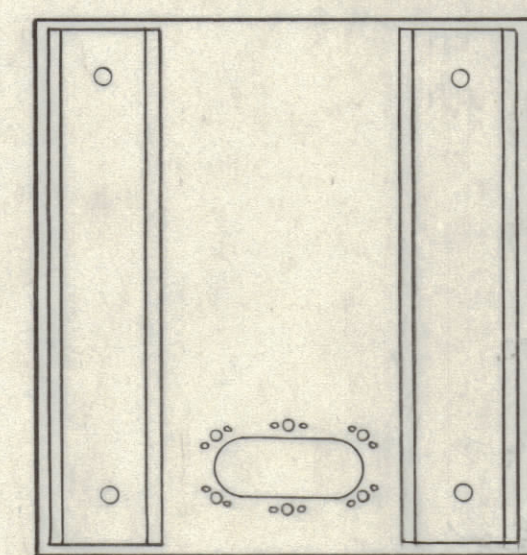
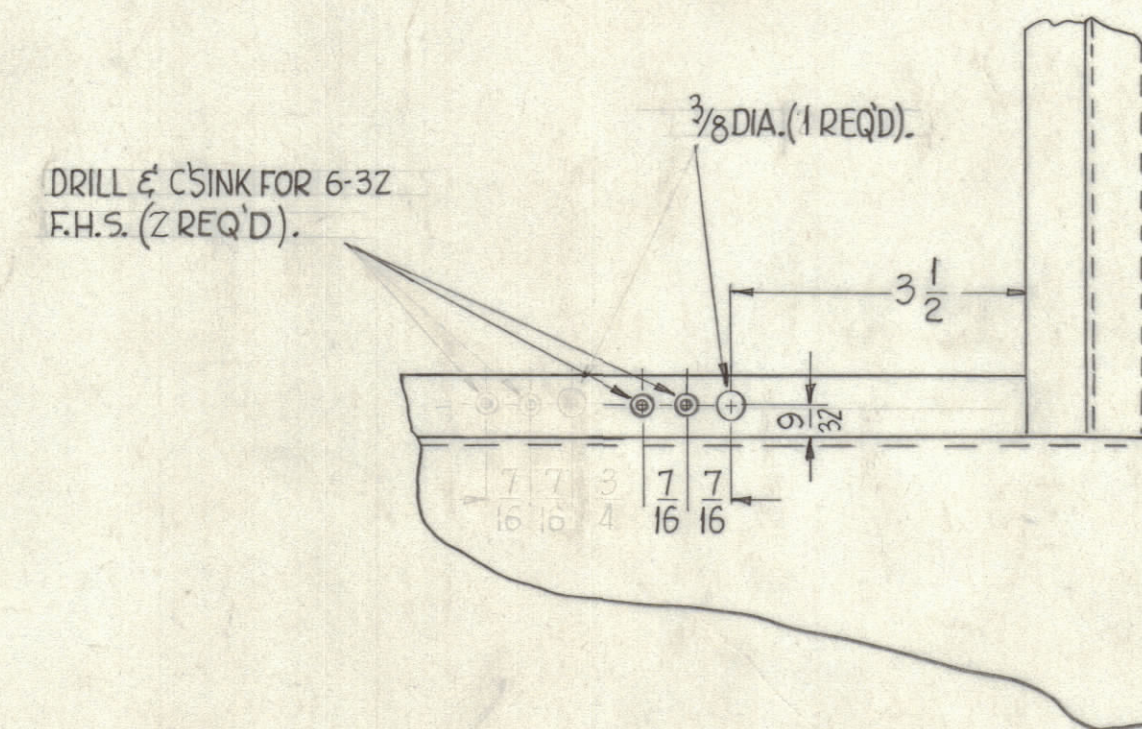
FRONT



RIGHT SIDE



REAR



BOTTOM

SYM	ZONE	DESCRIPTION	DATE	CH. NO.	DRAFTS	CHECKER	ENG. APP.
UNLESS OTHERWISE SPECIFIED:							
DIMENSIONS ARE IN INCHES			SCALE				
TOLERANCES ON FRACTIONS ± 1/64			MAXIMUM ALLOWABLE TOLERANCES HAVE BEEN DETERMINED AND ANY DEVIATIONS WILL BE CAUSE FOR REJECTION. REMOVE ALL BURRS & SHARP EDGES				
DECIMALS ± .005			ANGLES ± 1/2°				

REQ. PER UNIT	MODEL	SECTION	ASSY. NO.	DATE
1	SBT-350-K	RAK-19E		2-17-61
1	SBT-350-H	RAK-19C		
1	SBT-350-F	RAK-19C		
1	SBT-350-C	RAK-19A		
1	SBT-350A	RAK-19A		2-17-61

REQ. ITEM	PART NO.	DESCRIPTION	SYMBOL
THE TECHNICAL MATERIEL CORP. MAMARONECK, NEW YORK			
MODIFICATION FOR RAK-19A, RAK-19C & RAK-19E			
DRAWN	CHECKED	FINAL APPROVAL	
TK		MS-2528	
FINISH & SPEC. NO.		ELEC. DES. APP.	MECH. DES. APP.
		SHEET OF	