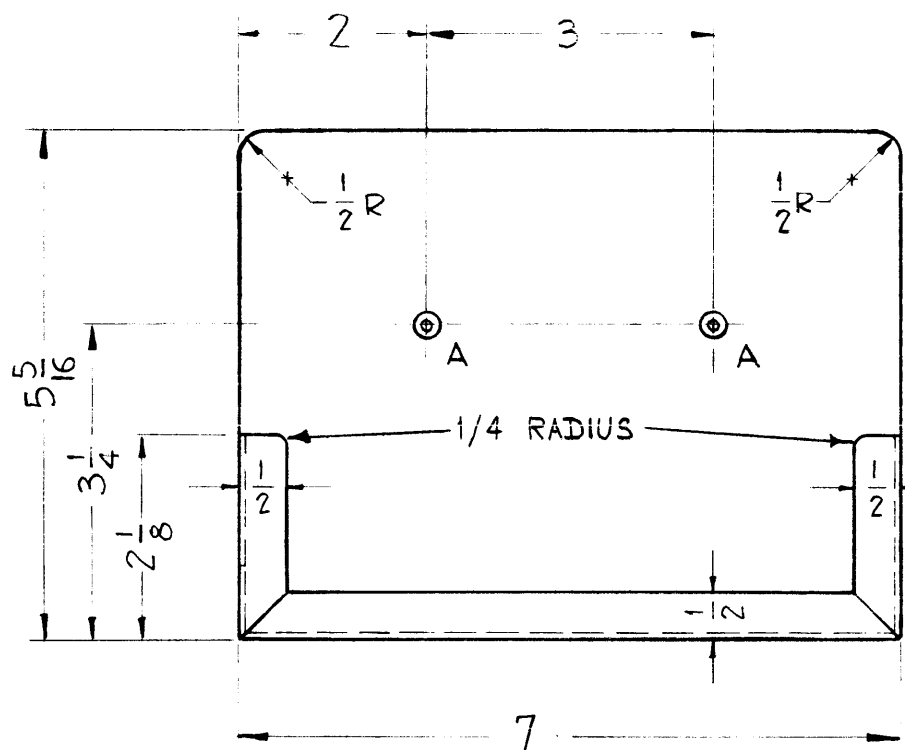
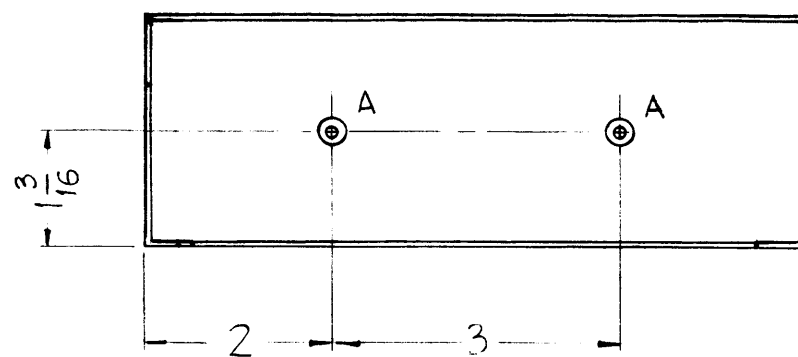
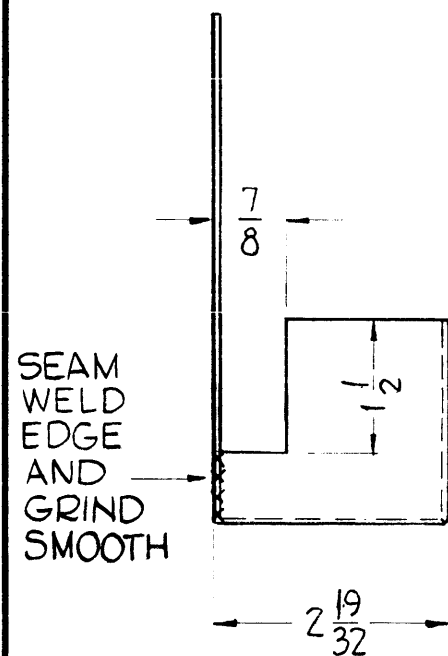


MS-2522C

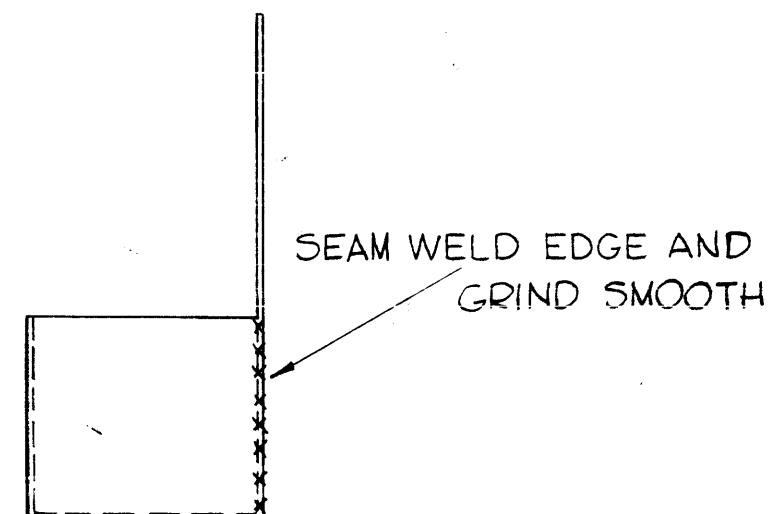
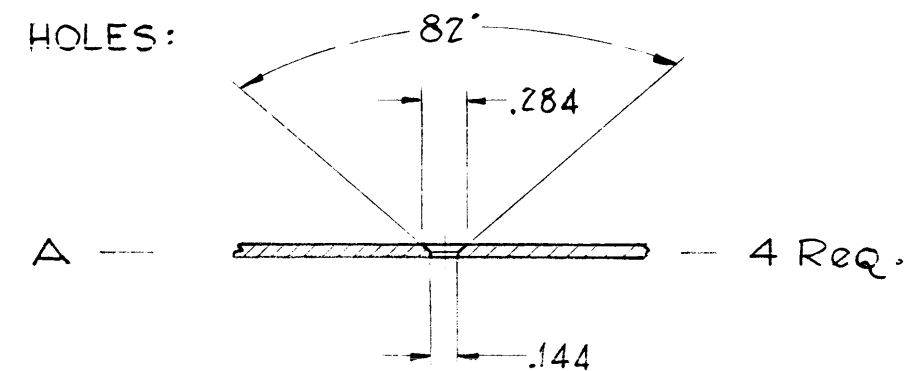
NOTICE TO PERSONS RECEIVING THIS DRAWING

THE TECHNICAL MATERIEL CORPORATION claims proprietary right in the material disclosed hereon. This drawing is issued in confidence for engineering information only and may not be reproduced or used to manufacture anything shown hereon without permission from THE TECHNICAL MATERIEL CORPORATION to the user. This drawing is loaned for mutual assistance and is subject to recall at any time.

Property of:
THE TECHNICAL MATERIEL CORPORATION
MAMARONECK, NEW YORK



HOLES:



FINISH NOTE:

S404 YELLOW IRIDITE,
S114 ZINC CHROMATE PRIMER,
S197 BLACK SEMI-GLOSS ENAMEL.

C	DIM 2-19/32 WAS 2-1/16.	4/26/61	4723	[Signature]	[Signature]	[Signature]
	DIM 1-1/2 WAS 1-3/8					
	DIM 7/8 WAS 3/4					
	DIM 1 WAS 5/8					
	DIM 5 5/16 WAS 5 1/4					
DIM 2" WAS 1 5/16						
B	S114 & S197 ADDED TO FINISH & SPEC NO. S120 DELETED FROM FINISH & SPEC NO.	3-23-61	4470	W.A.F.	[Signature]	[Signature]
A	1/4 RADIUS ADDED	3-10-61	4370	W.A.F.	[Signature]	[Signature]
SYM	DESCRIPTION	DATE	CH. NO.	DRAFTS	CHECKER	ENG. APP.
UNLESS OTHERWISE SPECIFIED:		SCALE: 1/2 (Do Not Scale)				
DIMENSIONS ARE IN INCHES		MAXIMUM ALLOWABLE TOLERANCES HAVE BEEN DETERMINED AND ANY DEVIATIONS WILL BE CAUSE FOR REJECTION.				
TOLERANCES ON FRACTIONS ± 1/64 DECIMALS ± .005 ANGLES ± 1/2°		REMOVE ALL BURRS AND SHARP EDGES				
		1	SWR 3000CPM			1-17-61
REQ. PER UNIT	MODEL	SECTION	ASS'Y. NO.	DATE		
USED ON						

REQ. ITEM	PART NO.	DESCRIPTION			SYMBOL
	.064 TH'K	THE TECHNICAL MATERIEL CORP. MAMARONECK, NEW YORK			
	STOCK SIZE	HOLDER, METER			
	ALUMINUM				
	MATERIAL				
5052-11-32		J.C. Biele	[Signature]	[Signature]	
TYPE & TEMPER	HEAT TREAT. SPEC.	DRAWN	CHECKER	FINAL APPROVAL	
SEE NOTE			[Signature]	MS-2522C	
FINISH & SPEC. NO.		ELEC. DES. APP.	MECH. DES. APP.		