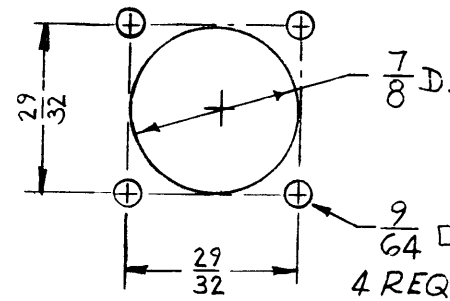


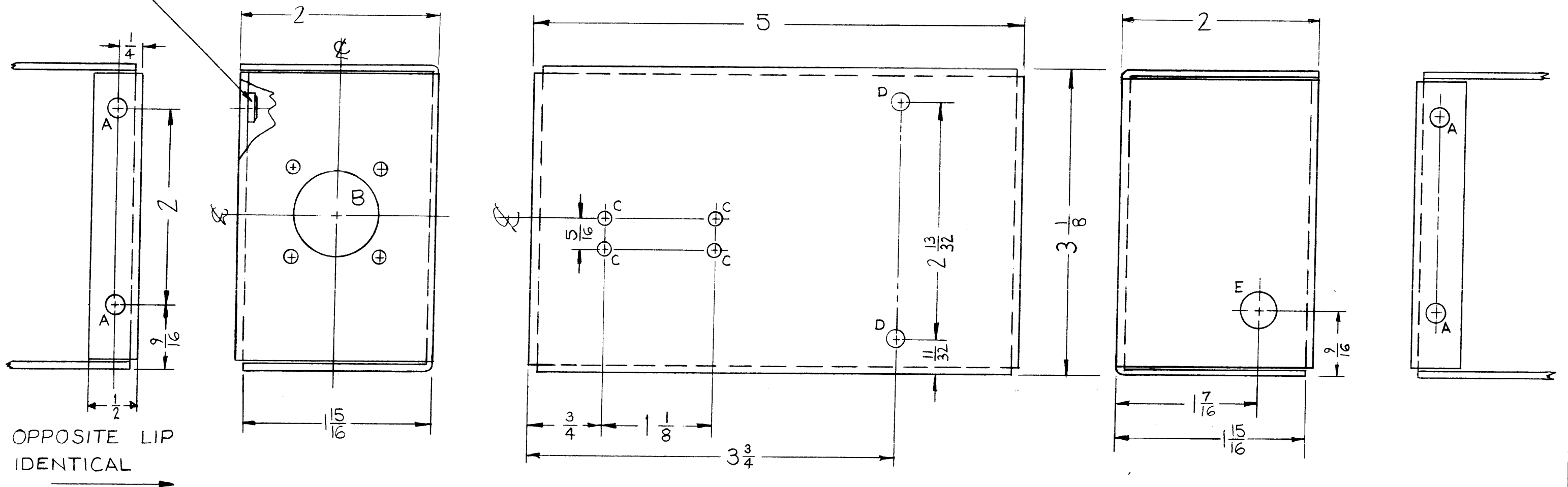
MS-2492 B

DETAIL 'B'



- A ~ .224-.221 DIA. ~ ~ ~ 4 REQ
- B ~ SEE DETAIL ~ ~ ~ 1 REQ
- C ~ 9/64 DIA. ~ ~ ~ 4 REQ
- D ~ 3/16 DIA. ~ ~ ~ 2 REQ
- E ~ 3/8 DIA. ~ ~ ~ 1 REQ

① MOUNTED IN ALL "A" HOLES AS SHOWN.



OPPOSITE LIP IDENTICAL

REF. LD-878

SYM	DESCRIPTION	DATE	CH. NO.	DRAFTS	CHECKER	ENG. APP.
B	1-15/16 DIM. RELOCATED; 2" DIM. ADDED	6-21-62	6825	G.S.	<i>[Signature]</i>	<i>[Signature]</i>
A	1-15/16 DIM. WAS 2	5-2-62	6668	EE	<i>[Signature]</i>	<i>[Signature]</i>

UNLESS OTHERWISE SPECIFIED:
 DIMENSIONS ARE IN INCHES
 TOLERANCES ON FRACTIONS ± 1/64 DECIMALS ± .005 ANGLES ± 1/2°
 SCALE: Do Not SCALE
 MAXIMUM ALLOWABLE TOLERANCES HAVE BEEN DETERMINED AND ANY DEVIATIONS WILL BE CAUSE FOR REJECTION.
 REMOVE ALL BURRS AND SHARP EDGES

REQ. PER UNIT	MODEL	SECTION	ASSY. NO.	DATE
1	RAK-9			12-5-60

4	1	NT-129-832-4	NUT ROUND, SWAGE TYPE	
REQ. ITEM	PART NO.		DESCRIPTION	SYMBOL
	.064		THE TECHNICAL MATERIEL CORP.	
	STOCK SIZE		MAMARONECK, NEW YORK	
	ALUMINUM		CHASSIS, BLOWER CONNECTING	
	MATERIAL			
	5052-H32		RUZZO <i>[Signature]</i>	<i>[Signature]</i>
	TYPE & TEMPER	HEAT TREAT. SPEC.	DRAWN	CHECKER
	S404 YELL. IRIDITE		RK <i>[Signature]</i>	<i>[Signature]</i>
	FINISH & SPEC. NO.	ELEC. DES. APP.	MECH. DES. APP.	
				MS-2492 B