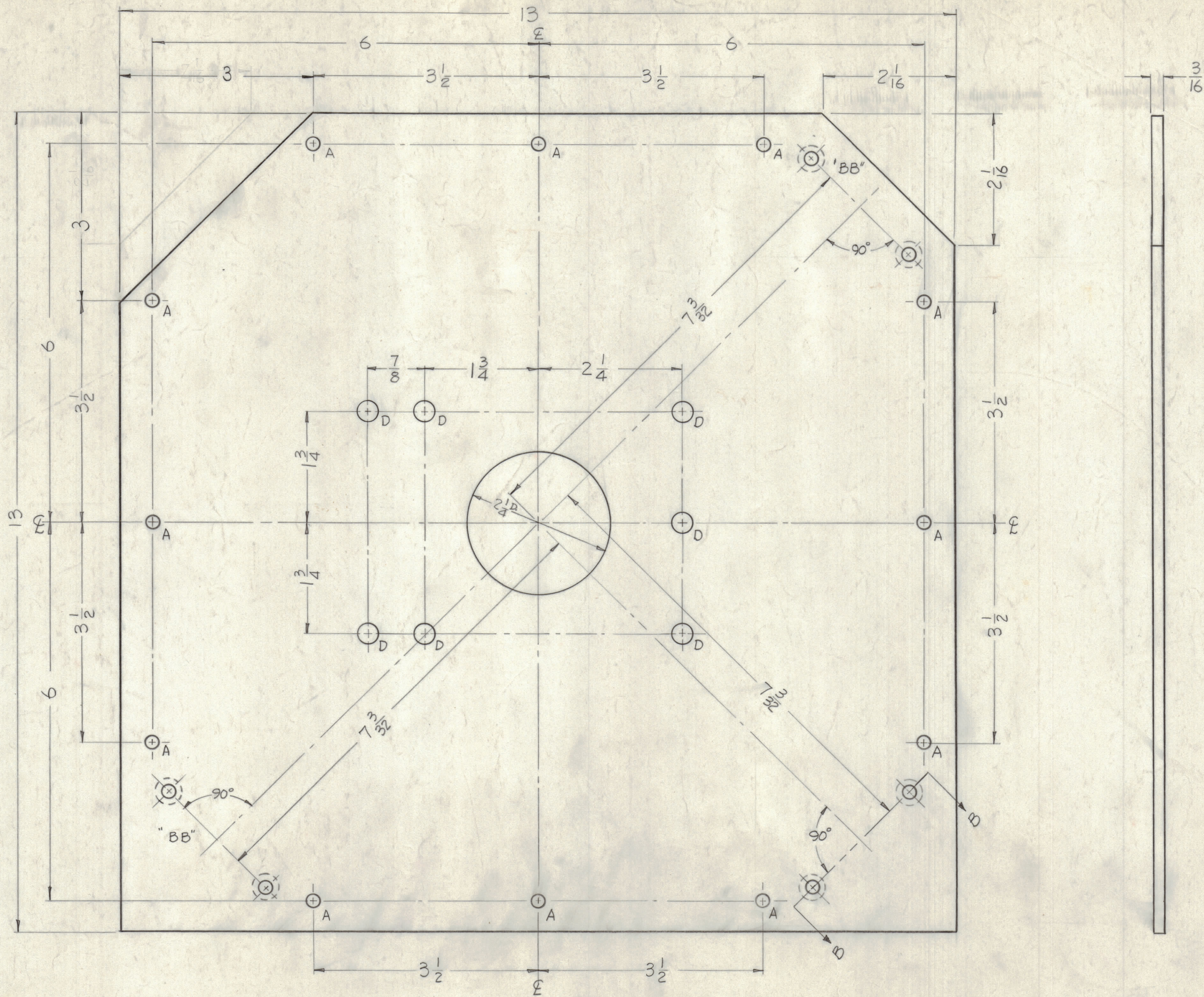
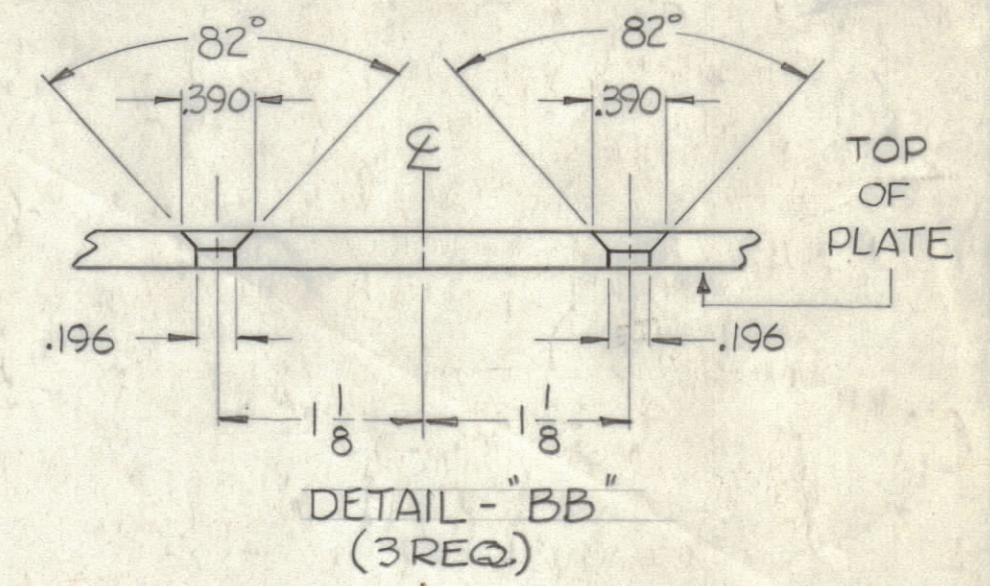


NOTICE TO PERSONS RECEIVING THIS DRAWING
 THE TECHNICAL MATERIEL CORPORATION claims
 proprietary right in the material disclosed herein.
 This drawing is issued in confidence for engineering
 information only and may not be reproduced or used
 to manufacture anything shown hereon without per-
 mission from THE TECHNICAL MATERIEL CORPORA-
 TION to the user. This drawing is loaned for mutual
 assistance and is subject to recall at any time.
 Property of:
 THE TECHNICAL MATERIEL CORPORATION
 MAMARONECK, NEW YORK



TOP VIEW OF PLATE SHOWN.

HOLES ~ REQ.
 A ~ 13/64 DIA. 12
 D ~ 5/16 DIA. 7



MS-2480 A

SYM	ZONE	DESCRIPTION	DATE	CH. NO.	DRAFTS	CHECKER	ENG. APP.
A	FB	3"X3" Notch was 2 1/6 x 2 1/6	1-27-61	4016	RU	QUS	QUS
UNLESS OTHERWISE SPECIFIED:			SCALE (DO NOT SCALE)				
DIMENSIONS ARE IN INCHES			MAXIMUM ALLOWABLE TOLERANCES HAVE BEEN DETERMINED AND ANY DEVIATIONS WILL BE CAUSE FOR REJECTION. REMOVE ALL BURRS & SHARP EDGES				
TOLERANCES ON							
FRACTIONS ± 1/64			DECIMALS ± .005		ANGLES ± 1/2°		

UNLESS OTHERWISE SPECIFIED
 DIMENSIONS ARE IN INCHES AND INCLUDE
 CHEMICALLY APPLIED OR PLATED FINISHES
 DECIMALS ± .005
 FRACTIONS ± 1/64
 ANGLES ± 1/2°

REQ. PER UNIT	MODEL	SECTION	ASS'Y. NO.	DATE
1	GPT-40KE	AX-209		11-15-60
USED ON				

REQ. ITEM	PART NO.	DESCRIPTION	SYMBOL
	3/16 THK.	THE TECHNICAL MATERIEL CORP. MAMARONECK, NEW YORK	
	ALUMINUM	PLATE, PA BANDSWITCH	
MATERIAL			
	2024-T3		
	TYPE & TEMPER	HEAT TREAT. SPEC.	
	5-404 - IRIDITE		
	FINISH & SPEC. NO.		
DRAWN		CHECKED	FINAL APPROVAL
D.S. HARRIS		QUS	QUS
ELEG. DES. APP.			MECH. DES. APP.
SHEET			OF
MS-2480			A