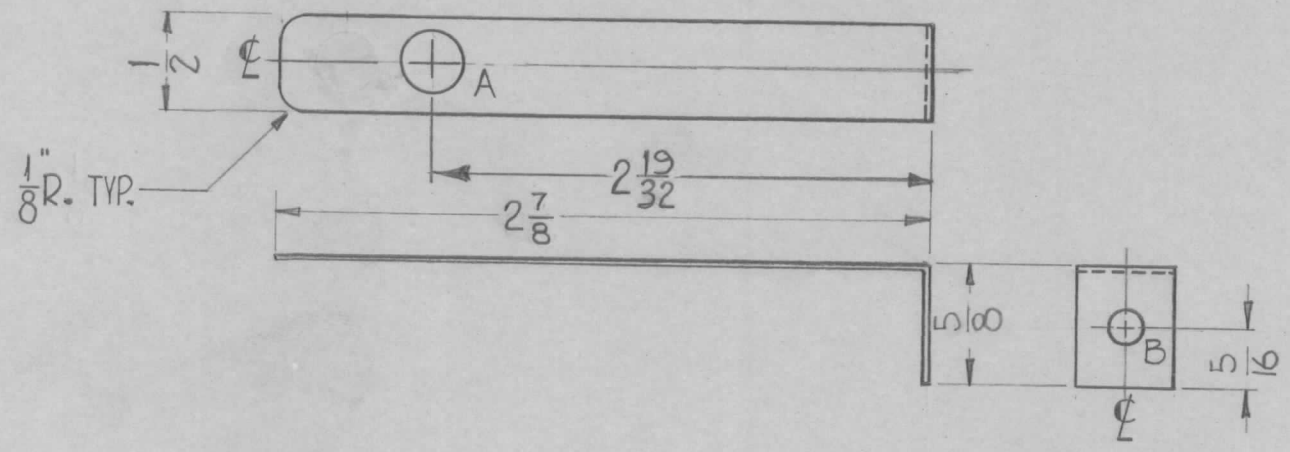


REQ. PER. UNIT	USED ON			MS-2477	C
	MODEL	ASS'Y. NO.	DATE		
1	GPT-40K	AX-275	11-14-60		

HOLES  
 A ~ 5/16 DIA.  
 B ~ 3/16 DIA.  
 REQ.  
 1  
 1



FINISH  
 S 245 SILVER PLATE, .0003 THK  
 S 423 SILVER KOTE IRIDITE

UNLESS OTHERWISE SPECIFIED  
 DIMENSIONS ARE IN INCHES AND INCLUDE  
 CHEMICALLY APPLIED OR PLATED FINISHES

DECIMALS	FRACTIONS
.X ± .05	± 1/64
.XX ± .01	ANGLES
.XXX ± .005	± 0° 30'

TOLERANCES

CUT HERE  
 GUARANTEED  
 2-66

REQ.	ITEM	PART NO.	DESCRIPTION		SYMBOL								
C	1	2 7/8 WAS 3 1/16	9.17.64	12364	MB @ QOR	.031	THE TECHNICAL MATERIEL CORP. MAMARONECK, NEW YORK STRAP, UNBALANCED OUTPUT						
B	1	FINISH WAS GOLD PL. .000025	8-22-62	7101	SG Jhe Jhe								
A	1	2 19/32 DIM. WAS 3 3/8	1-4-61	3856	WBF JCB QOR								
ISSUE	ITEM	CHANGED FROM	DATE	CH. NO.	DRAFTS	CHECKER	ENG. APP.						
TOLERANCES			SCALE: DO NOT SCALE					Drawn	aa.	JB			
DEC. DIM. ±			MAXIMUM ALLOWABLE TOLERANCES HAVE BEEN DETERMINED AND ANY DEVIATIONS WILL BE CAUSE FOR REJECTION. REMOVE ALL BURRS AND SHARP EDGES			TYPE & TEMPER		HEATTREAT. SPEC.	DRAWN	CHECKED	FINAL APPROVAL		
FRAC. DIM. ±						SEE NOTE							
ANGULAR DIM. ±						FINISH & SPEC. NO.		ELEC. DES. APP		MECH. DES. APP		MS-2477	C