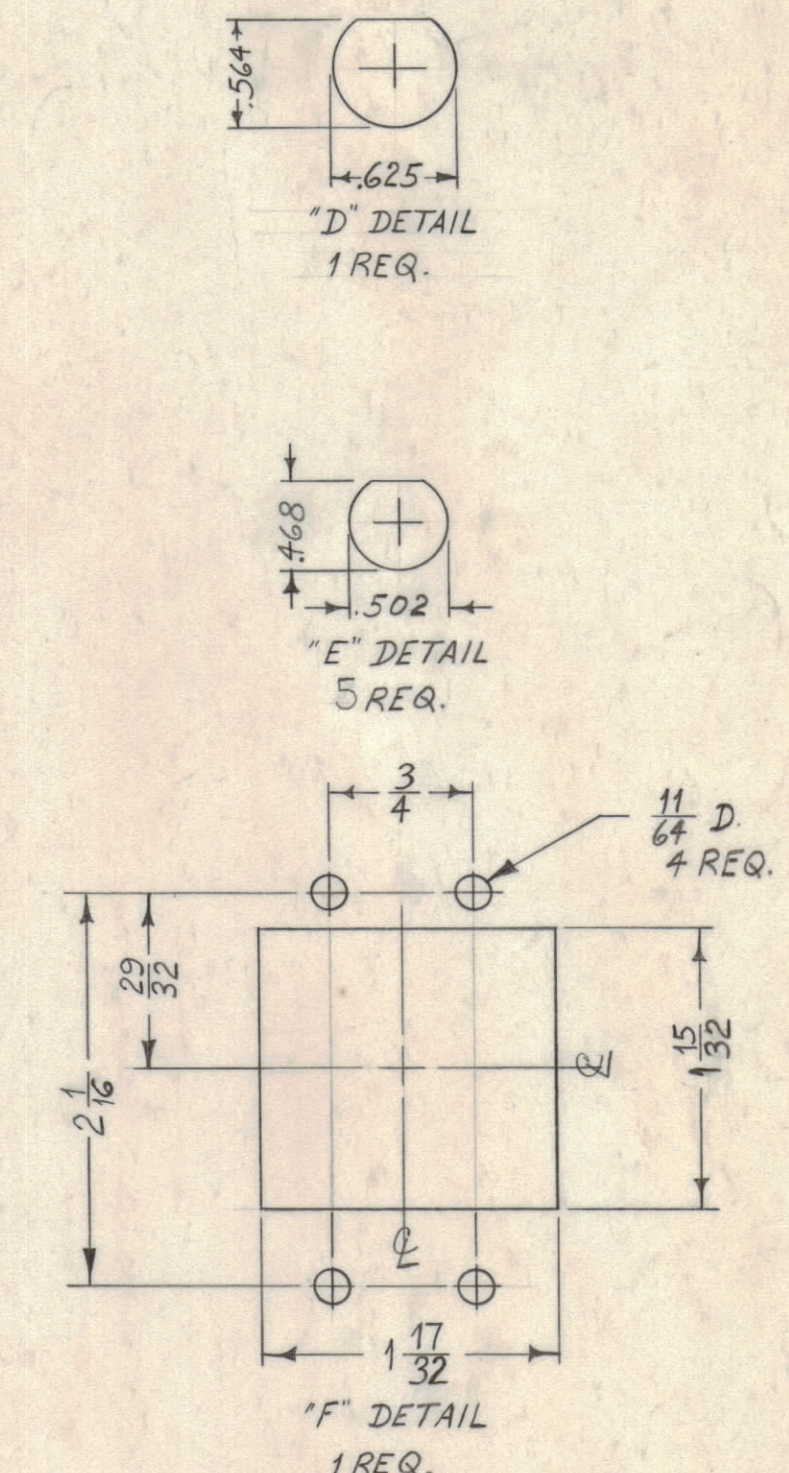
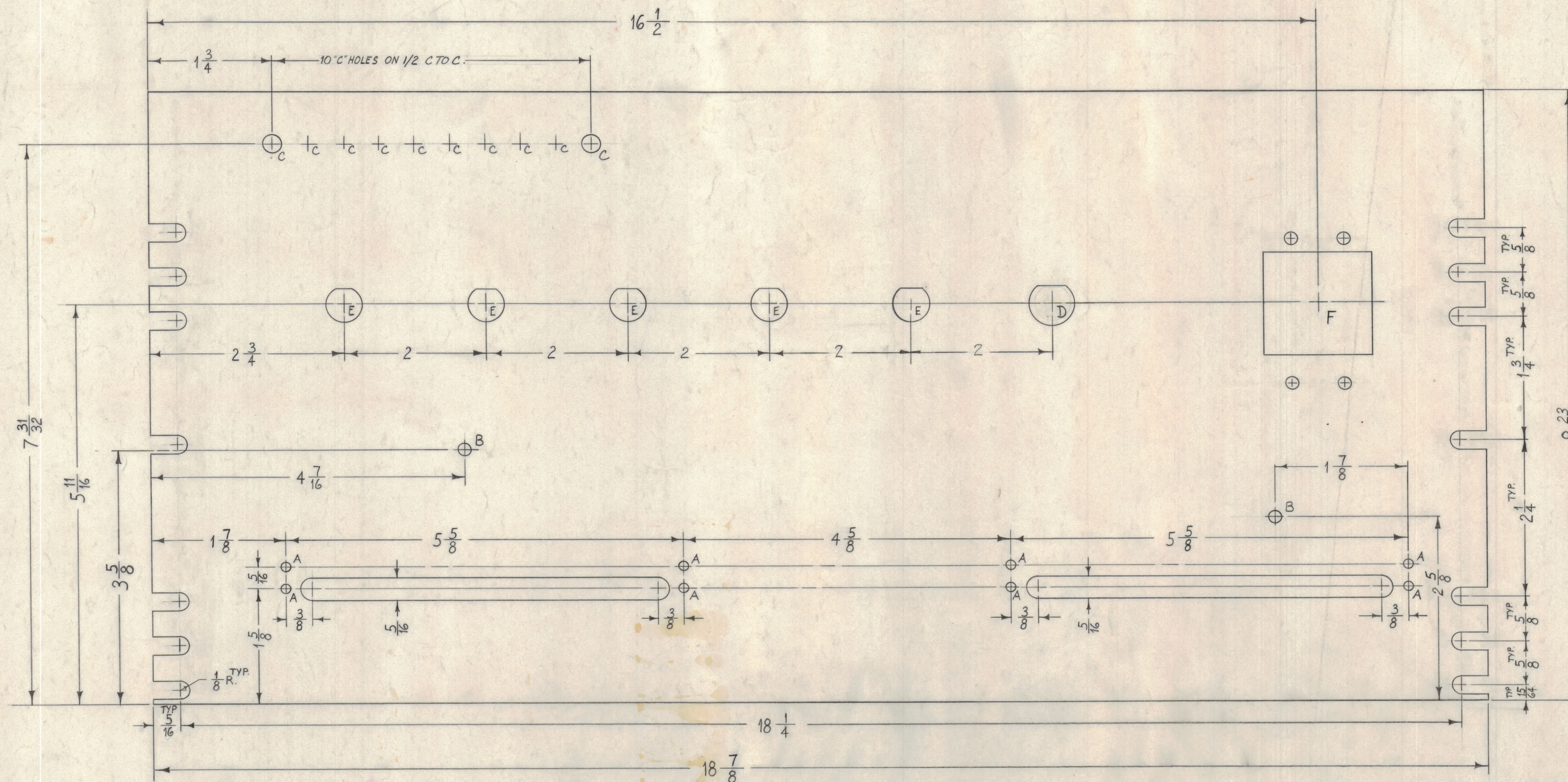


NOTICE TO PERSONS RECEIVING THIS DRAWING

THE TECHNICAL MATERIEL CORPORATION claims proprietary right in the material disclosed herein. This drawing is issued in confidence for engineering information only and may not be reproduced or used to manufacture anything shown herein without permission from THE TECHNICAL MATERIEL CORPORATION to the user. This drawing is loaned for mutual assistance and is subject to recall at any time.

Property of:
THE TECHNICAL MATERIEL CORPORATION
MAMARONECK, NEW YORK

- A ~ $\frac{1}{8}$ DIA. 8 REQ.
- B ~ $\frac{11}{64}$ DIA. 2 REQ.
- C ~ $\frac{1}{4}$ DIA. 10 REQ.



MACHINING ~
 1~ LATERAL BOW OF PANEL MUST BE KEPT TO .031 TOLERANCE.
 2~ MILL ALL EDGES.
 3~ HOLES MUST BE DRILLED.
 4~ PANEL MUST BE FREE OF ALL MACHINING MARKS GOUGES & SCRATCHES.
 IF NECESSARY SAND FRONT OF PANEL WITH NO. 120 GRIT SANDPAPER.

FINISHING ~
 S404 YELLOW IRIDIUM
 3114 ZINC CHROMATE PRIMER FRONT &
 3115 T.M.B. SMOOTH GREY ENAMEL EDGES ONLY

SYM	ZONE	DESCRIPTION	DATE	CH. NO.	DRAFTS	CHECKER	ENG. APP.
C	EG	1" HOLE ADDED	7-25-61	4971	RL	WJS	WJS
B	85	5-114, 5115 FINISH NOTES DELETED	6/14/61	5075	WJS	WJS	WJS
A	83	15/64 TYP DIM WAS 7/32	11-2-60	3365	WJS	WJS	WJS
A	810	5/16 TYP DIM WAS 3/8					

UNLESS OTHERWISE SPECIFIED:
 DIMENSIONS ARE IN INCHES
 TOLERANCES ON
 FRACTIONS $\pm 1/64$ DECIMALS $\pm .005$ ANGLES $\pm 1/2^\circ$

SCALE
 MAXIMUM ALLOWABLE TOLERANCES HAVE BEEN DETERMINED AND ANY DEVIATIONS WILL BE CAUSE FOR REJECTION. REMOVE ALL BURRS & SHARP EDGES

REQ. PER UNIT	MODEL	SECTION	ASSY. NO.	DATE
1	GPF 10K (R)	AX-239		10-26-60

REQ. ITEM	PART NO.	DESCRIPTION	SYMBOL
1	1/8	THE TECHNICAL MATERIEL CORP. MAMARONECK, NEW YORK	
STOCK SIZE		FRONT PANEL MACHINING	
ALUMINUM		CENTER SHIELD	
MATERIAL			
2024 T3			
TYPE & TEMPER			
HEAT TREAT. SPEC.			
SEE NOTE			
FINISH & SPEC. NO.			
ELEC. DES. APP.			
MECH. DES. APP.			
SHEET		OF	

MS-2469



B

A