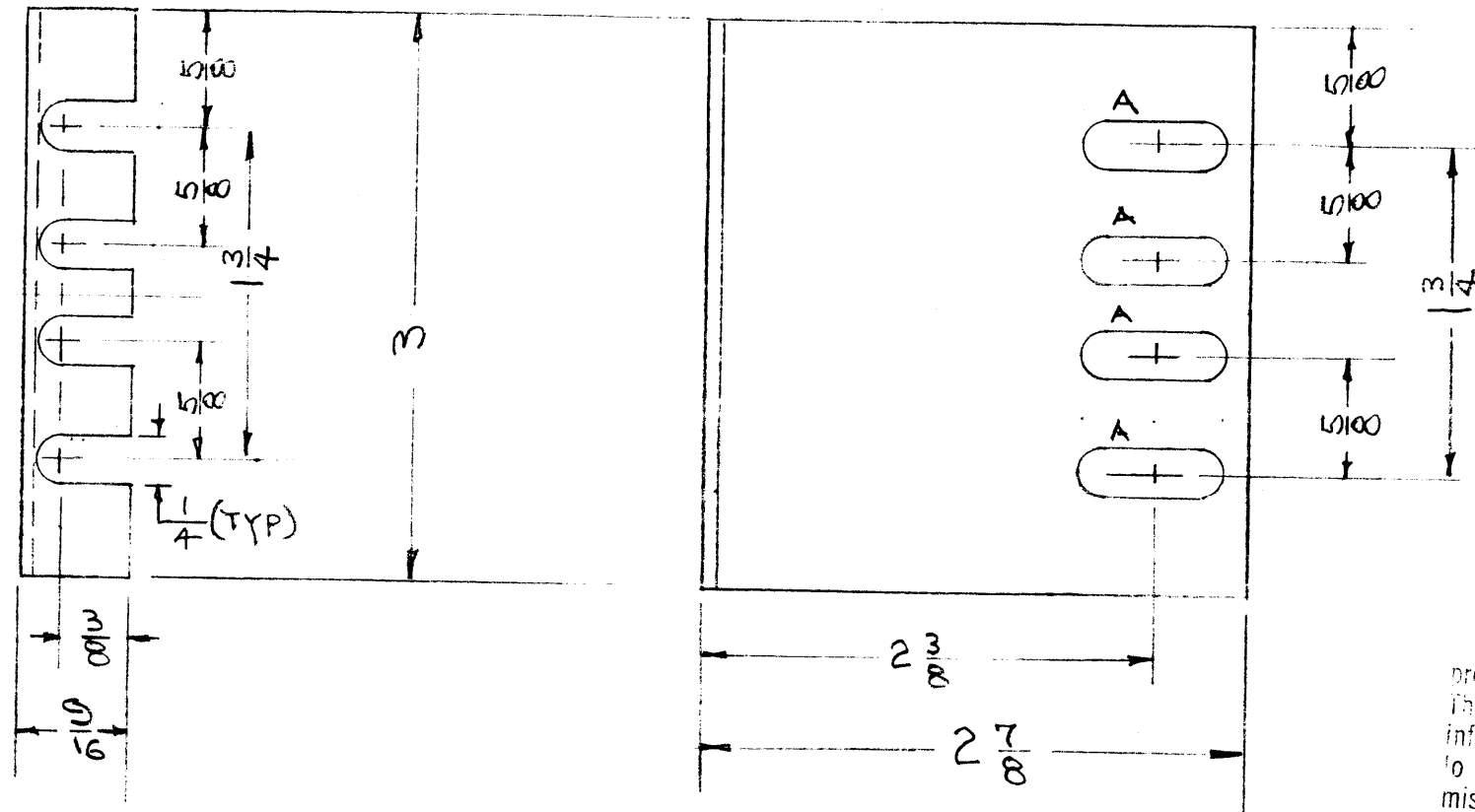


MS-2458

A- 1/4 X 3/4 SLOTS 4 REQ



NO. OF PERSONS RECEIVING THIS DRAWING

THE TECHNICAL MATERIEL CORPORATION claims proprietary right in the material disclosed hereon. This drawing is issued in confidence for engineering information only and may not be reproduced or used to manufacture anything shown hereon without permission from THE TECHNICAL MATERIEL CORPORATION to the user. This drawing is loaned for mutual assistance and is subject to recall at any time.

Property of:  
THE TECHNICAL MATERIEL CORPORATION  
MAMARONECK, NEW YORK

REF: TK-100  
TK-101  
TK-106

SYM	DESCRIPTION	DATE	CH. NO.	DRAFTS	CHECKER	ENG. APP.

UNLESS OTHERWISE SPECIFIED:  
DIMENSIONS ARE IN INCHES  
TOLERANCES ON FRACTIONS ± 1/64 DECIMALS ± .005 ANGLES ± 1/2°

SCALE: 1" = 1"

MAXIMUM ALLOWABLE TOLERANCES HAVE BEEN DETERMINED AND ANY DEVIATIONS WILL BE CAUSE FOR REJECTION. REMOVE ALL BURRS AND SHARP EDGES

REQ. PER UNIT	MODEL	SECTION	ASS'Y. NO.	DATE
6	GPT-10K			

REQ. ITEM	PART NO.	DESCRIPTION	SYMBOL
.062 GA		THE TECHNICAL MATERIEL CORP. MAMARONECK, NEW YORK	
STEEL		ADAPTER BRKT, REAR	
MILD		3" SLIDE	
TYPE & TEMPER	HEAT TREAT. SPEC.	DRAWN	CHECKER
CADMIUM PLATE			
YELLOW IRIDITE			
FINISH & SPEC. NO.	ELEC. DES. APP.	MECH. DES. APP.	MS-2458