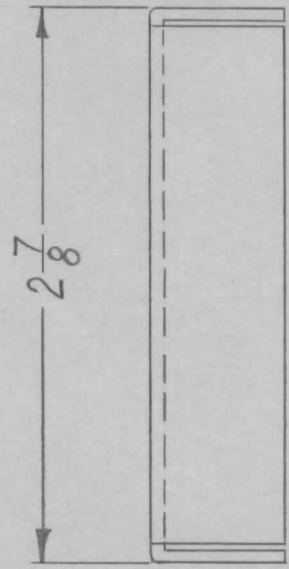
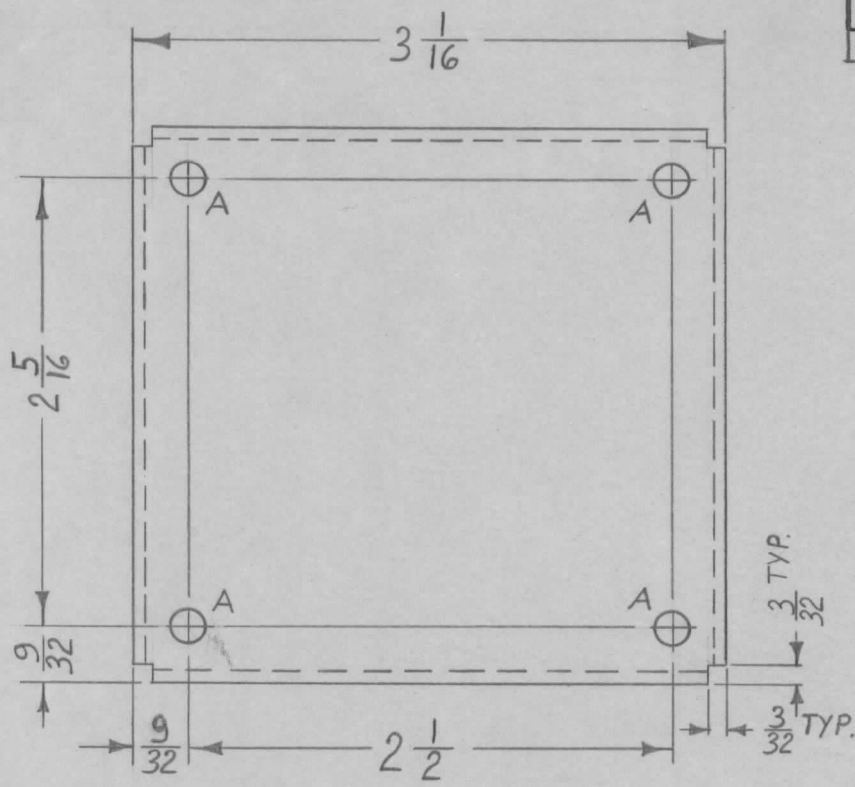


REQ. PER. UNIT	USED ON		
	MODEL	ASS'Y. NO.	DATE
1	CHG-1	MF/RF SEC.	10-15-60
1	CHG-2	MF/RF	5-24-61

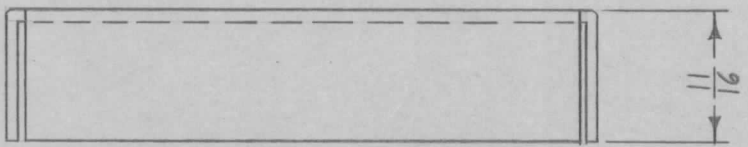
MS-2450



A ~ 11/64 DIA.

4 REQ.

NOTE:
USE MATERIAL THICKNESS FOR MAX. RADIUS ON ALL BENDS UNLESS OTHER WISE SPECIFIED.



REF: LD-935(1) FOR CHG-2 ONLY
LD-868(1) FOR CHG-1 ONLY

ISSUE	ITEM	CHANGED FROM	DATE	CH. NO.	DRAFTS	CHECKER	ENG. APP.	REQ.	ITEM	PART NO.	DESCRIPTION	SYMBOL				
										.051	THE TECHNICAL MATERIEL CORP. MAMARONECK, NEW YORK COVER, REAR (COIL ASS'Y)					
										STOCK SIZE						
										ALUMINUM						
										MATERIAL						
TOLERANCES			SCALE: FULL					5052-H32								
DEC. DIM. ±			MAXIMUM ALLOWABLE TOLERANCES HAVE BEEN DETERMINED AND ANY DEVIATIONS WILL BE CAUSE FOR REJECTION. REMOVE ALL BURRS AND SHARP EDGES					TYPE & TEMPER	HEAT TREAT. SPEC.	DRAWN	CHECKED	FINAL APPROVAL				
FRAC. DIM. ± 1/64								S404 YELL. IRIDITE								
ANGULAR DIM. ±								FINISH & SPEC. NO.	ELEC. DES. APP	MECH. DES. APP						
												MS-2450				