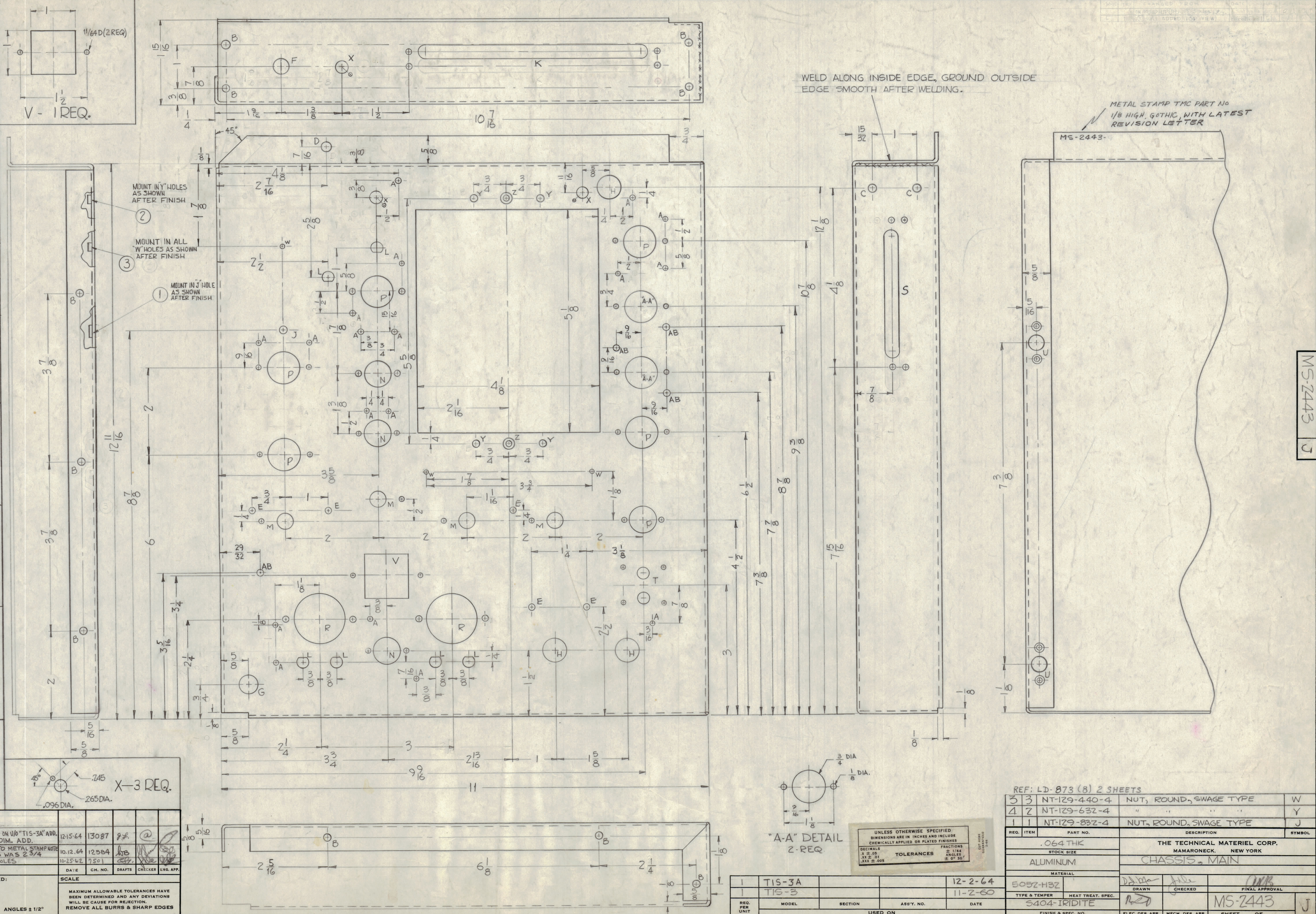
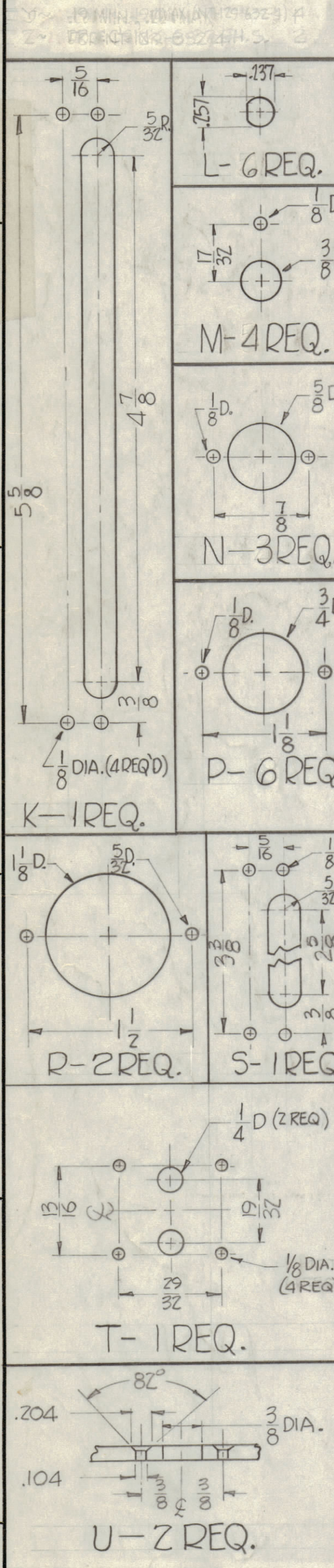


HOLES

A ~ 1/8 DIA.	19
B ~ 1/64 DIA.	14
C ~ 3/16 DIA.	2
D ~ 1/4 DIA.	1
E ~ 5/32 DIA.	5
F ~ 3/8 DIA.	1
G ~ 7/16 DIA.	1
H ~ 9/16 DIA.	3
J ~ .221 MIN., .224 MAX.	1
W ~ .161 MIN., .164 MAX.	3
Y ~ .191 MIN., .194 MAX.	4
Z ~ DR. & CSINK 6-32 F.H.S.	2
AB ~ 9/64 DIA.	4



J	ES/6CB	ON HOLE LEGEND: 'AB' HOLES ADD; ON W/O 'TIS-3A' ADD. ON PICT: 4 'AB' HOLES & LOC. DIM. ADD.	12-15-64	13087	9	@
H	G2	WITH LATEST REV. LET. ADD TO METAL STAMP NOTE LOC. DIM. FOR 'E' HOLE 3/8 WAS 2 3/4	10-12-64	12584	10B	
G	F6	(2) 'A-A' HOLES WERE (2) 'P' HOLES	10-25-62	7501		
SYM	ZONE	DESCRIPTION	DATE	CH. NO.	DRAFTS	CHECKER
UNLESS OTHERWISE SPECIFIED:			SCALE			
DIMENSIONS ARE IN INCHES			MAXIMUM ALLOWABLE TOLERANCES HAVE BEEN DETERMINED AND ANY DEVIATIONS WILL BE CAUSE FOR REJECTION. REMOVE ALL BURRS & SHARP EDGES			
TOLERANCES ON FRACTIONS ± 1/64			DECIMALS ± .005			
ANGLES ± 1/2°						

REF: LD-873 (8) 2 SHEETS

3	3	NT-129-440-4	NUT, ROUND, SWAGE TYPE	W
4	2	NT-129-632-4	"	Y
1	1	NT-129-832-4	NUT, ROUND, SWAGE TYPE	J
REQ. ITEM	PART NO.	DESCRIPTION	SYMBOL	
.064 THK		THE TECHNICAL MATERIEL CORP.		
ALUMINUM		MAMARONECK, NEW YORK		
		CHASSIS, MAIN		
MATERIAL		DRAWN		
5052-H32		CHECKED		
TYPE & TEMPER		HEAT TREAT. SPEC.		
S404-IRIDITE		FINAL APPROVAL		
FINISH & SPEC. NO.		MS-2443		
		ELEC. DES. APP.		
		MECH. DES. APP.		
		SHEET OF		

MS-2443 J