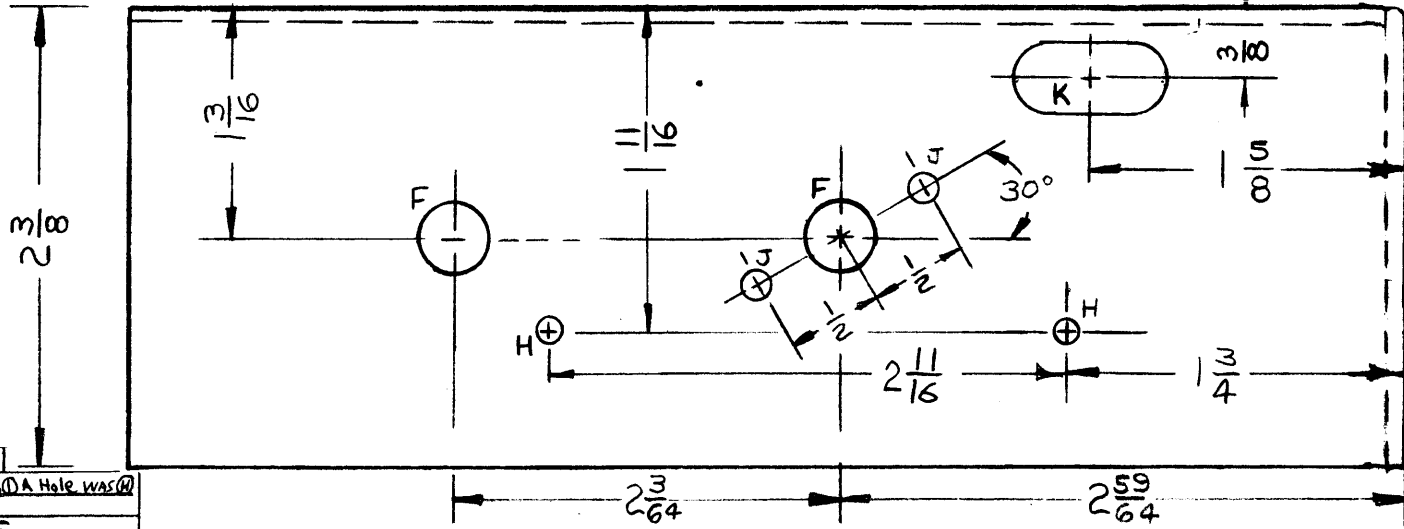
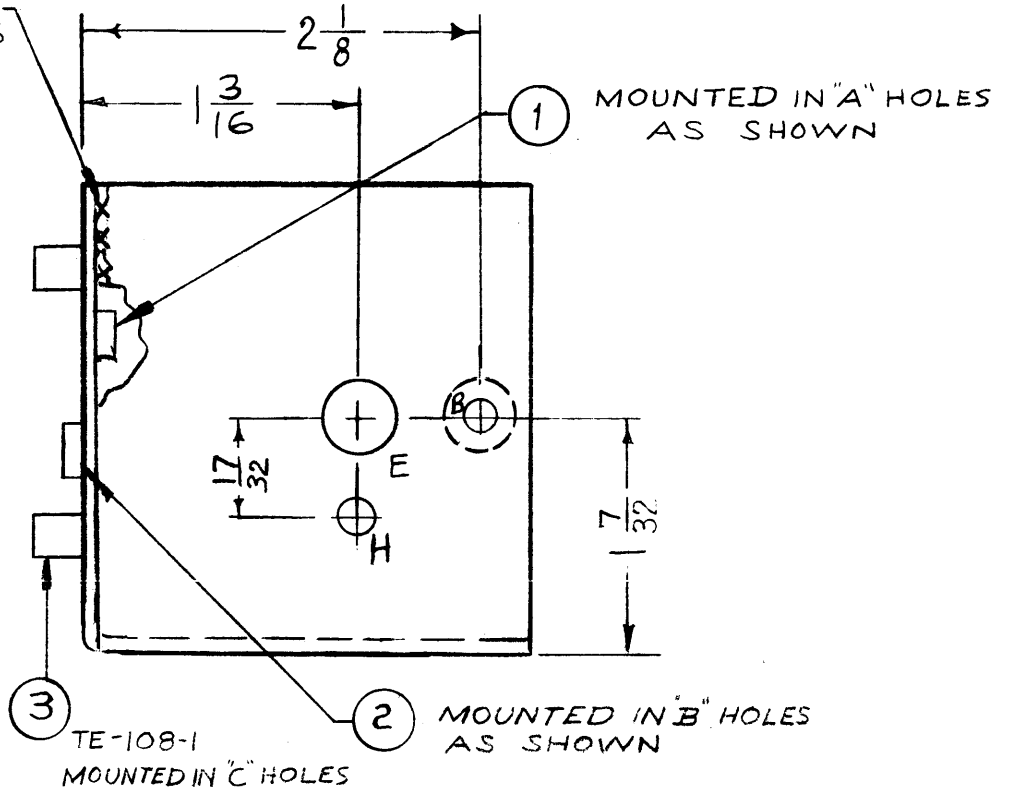


TACKWELD APPROX 3/16 LONG.



NOTE:
 1) INSERTS MOUNTED AFTER FINISHING.
 2) USE MATERIAL THICKNESS FOR MAX. RADIUS, ON ALL BENDS OTHERWISE SPECIFIED.

- M - 5/16 DIA ~ 1 Req.
- L - 3/16 D. ~ 1 Req.
- A - 161/164 D (FOR NT-129-440-4) ~ 7 Req.
- B - 191/194 D FOR NT-129-632-4 ~ 4 Req.
- C - .189 D. ~ 4 Req.
- D - 5/32 x 5/16 SLOT ~ 4 Req.
- E - 3/8 D. ~ 1 Req.
- F - 1/2 D. ~ 3 Req.
- G - 5/32 D. ~ 2 Req.
- H - 1/8 D. ~ 4 Req.
- J - 5/32 D. ~ 2 Req.
- K - 3/8 x 3/4 SLOT 1 Req.

5	1 Hole Relocated					
5	(H) Hole was (C) Hole (D) A Hole was (E)					
4	(H) Hole Added					
3	Item (D) Qty was 6.					
2	Dim. 17/32 was 1/2.	11-22-60	3548	RU	JCB	JCB
1	Dim. 2 1/16 was 2 5/16.	11-4-60	3385	RU	JCB	JCB
2	(H) Hole Added					
1	Dim 15/32 was 13/32	10-31-60	3347	JCB	JCB	JCB
1	DIM. 9/16 WAS 1/2	10-26-60	3318	J.C.B.	JCB	JCB

3	(M) Hole Relocated					
2	(K) Slot was 1/4 D Hole Relocated	2-28-61	4234	RU	JCB	JCB
1	(F) Holes were (E) Holes					
2	DIM. 5/16 WAS 15/16 IN ERROR	2-14-61	A157	JCB	JCB	JCB
1	DIM 7/16 WAS 7/8 IN ERROR					

ISSUE	ITEM	CHANGED FROM	DATE	CH. NO.	DRAFTS	CHECKER	ENG. APP.

TOLERANCES		SCALE: FULL (DO NOT SCALE)	
DEC. DIM. ±		MAXIMUM ALLOWABLE TOLERANCES HAVE BEEN DETERMINED AND ANY DEVIATIONS WILL BE CAUSE FOR REJECTION.	
FRAC. DIM. ± 1/64		REMOVE ALL BURRS AND SHARP EDGES	
ANGULAR DIM. ±			

1	CHG-1	MF/RF			9-15-60
REQ. PER UNIT	MODEL	PROJECT NO.	ASSY. NO.	DATE	

REF: LD-860 (2)

4	3	TE-108-1		
4	2	NT-129-632-4	NUT, ROUND, SWAGE TYPE	
7	1	NT-129-440-4	NUT, ROUND, SWAGE TYPE	
REQ. ITEM		PART NO.	DESCRIPTION	SYMBOL
		064	THE TECHNICAL MATERIEL CORP. MAMARONECK, NEW YORK	
		ALUMINUM	#4 CHASSIS R.F. SECTION	
		5052-H32	TR U220 9-15-60	
		S404 YELLOW IRIDITE	DRAWN	CHECKED
			FINAL APPROVAL	
			MS-2397 G	