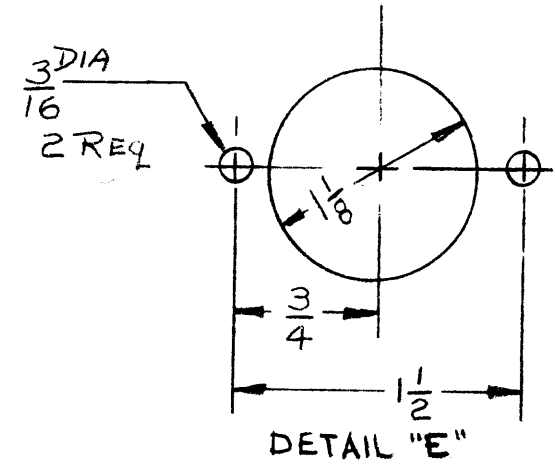


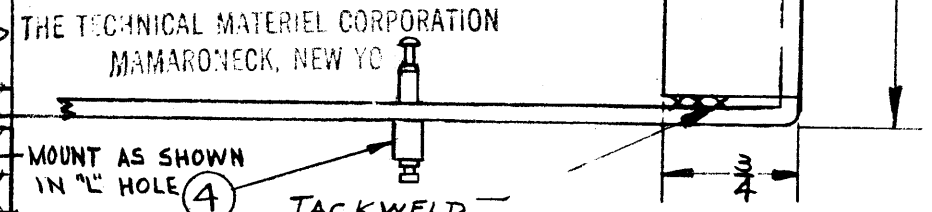
NOTE 2  
INSERTS MOUNTED  
AFTER FINISHING

- A ~ 1/16" (FOR NT 129-440-4) 8 Req
- B ~ 1/32" (FOR NT 129-632-4) 5 Req
- C ~ #12 DRILL 4 Req
- D ~ 5/32 x 5/16 SLOT 3 Req
- E ~ SEE DETAIL
- F ~ 1/2 D. 1 Req
- G ~ 1/4 D. 2 Req
- H ~ 1/8 D. 1 Req
- J ~ #19 DRILL 2 Req
- K ~ 5/16 D. 1 Req
- L ~ .158 D. 1 Req



PROPERTY OF:  
THE TECHNICAL MATERIEL CORPORATION  
MAMARONECK, NEW YORK

PROPERTY OF:  
THE TECHNICAL MATERIEL CORPORATION claims  
no right in the material disclosed herein.  
This drawing is issued in confidence for engineering  
information only and may not be reproduced or used  
to manufacture anything shown hereon without per-  
mission from THE TECHNICAL MATERIEL CORPORA-  
TION to the user. This drawing is loaned for mutual  
assistance and is subject to recall at any time.



REF: LD-937 (2) FOR CHG. 2 ONLY.  
REF: LD-864 (2) FOR CHG. 1 ONLY.

NOTE 8  
USE MATERIAL THICKNESS FOR MAX RADII  
ON BENDS, UNLESS OTHERWISE SPECIFIED.

ISSUE	ITEM	CHANGED FROM	DATE	CH. NO.	DRAFTS	CHECKER	ENG. APP.
F		ON B/M; IT. 2 QTY. WAS 9; IT. 4 ADDED; ON PICT; "A" HOLE CHANGED TO "L" HOLE (1 PL); CALLOUT & IT 4 W/NOTE ADD	2-26-65	13563	9.1.	JCB	
E	1	OK Hole was 1/8" Relocated	2-28-61	4234	RU	JCB	
D	2	NT129, CLARIFIED PICTORIAL WISE					
D	1	1/4 R WAS 3/16; 10 HOLE CHANGED TO 1/8"	1-16-61	3917	RU	JCB	
C	2	1/2 DIM WAS 11/32					
C	1	1/8" HOLE ADDED; 1/8" HOLE RELOCATED	11-22-60	3548	DOM	JCB	
B	4	"A" HOLE QUAN. WAS 10 IN ERROR					
B	3	ITEM 2 QUAN. WAS 4 IN ERROR					
B	2	ITEM 1 QUAN. WAS 8 IN ERROR	11-9-60	3449	W.F.	JCB	
A	1	ONE "C" HOLE CHANGED TO "K" HOLE	11-1-60	3346	JCB		

REQ. ITEM	PART NO.	DESCRIPTION	SYMBOL
1	4	TE-169-1	FEEDTHRU, -TEFLON
4	3	TE-108-1	STAND-OFF, RIVET TYPE
8	2	NT-129-440-4	NUT, ROUND, SWAGE TYPE
5	1	NT-129-632-4	NUT, ROUND, SWAGE TYPE
.064			
STOCK SIZE			
ALUMINUM			
#1 CHASSIS R.F. SECTION			
MATERIAL			
5052-H32		R. 11230	
TYPE & TEMPER		HEAT TREAT. SPEC.	DATE
S404 YELLOW IRIDITE			9-14-60
FINISH & SPEC. NO.		ELEC. DES. APP.	MECH. DES. APP.

REQ. PER UNIT	MODEL	PROJECT NO.	ASS'Y. NO.	DATE
1	CHG 2	ME/RF		6-5-61
1	CHG -1	ME/RF		9-14-60