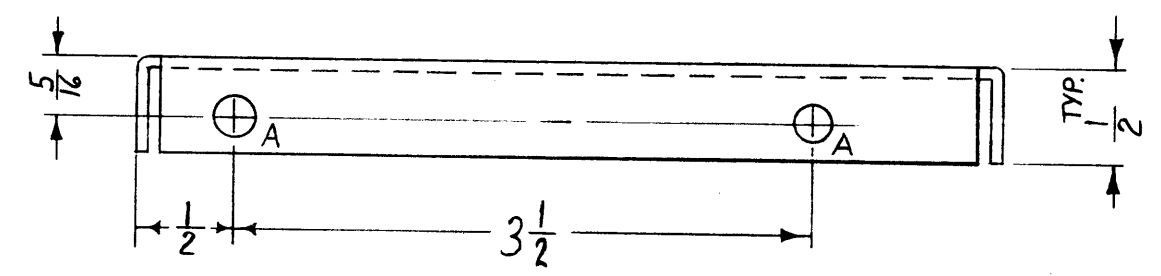
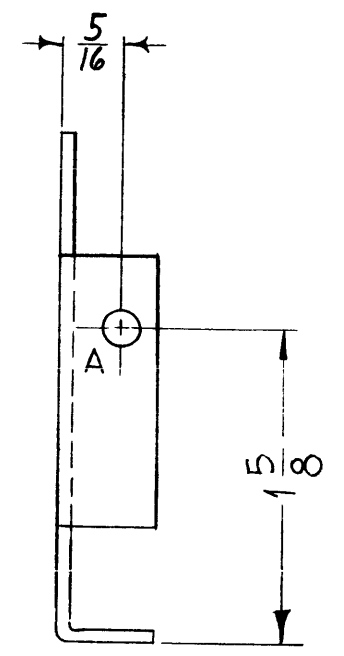


① MOUNT ITEM 1 (NT-129-632-4) IN ALL "A" HOLES AFTER FINISHING



- A~.191-.194 D. (FOR NT-129-632-4) 4 REQ.
- B~ 1/4 DIA. 4 "
- C- DELETED
- D~ 5/32 DIA. 4 "

NOTE: USE MATERIAL THICKNESS FOR MAX. RADII ON ALL BENDS UNLESS OTHERWISE SPECIFIED. REF: LD-842 (1)

4	1	NT-129-632-4	NUT, ROUND, SWAGE TYPE	
REQ. ITEM	PART NO.	DESCRIPTION	SYMBOL	
.064		THE TECHNICAL MATERIEL CORP. MAMARONECK, NEW YORK		
ALUMINUM		SHIELD, PLUG		
5052-H32		MATERIAL		
TYPE & TEMPER	HEAT TREAT. SPEC.	DRAWN	CHECKED	FINAL APPROVAL
S404 YELL. IRIDITE				MS-2389 F
FINISH & SPEC. NO.		ELEC. DES. APP. MECH. DES. APP.		

ISSUE	ITEM	CHANGED FROM	DATE	CH. NO.	DRAFTS	CHECKER	ENG. APP.
F	2	1 (D) Hole Relocated (Upper Left)	2-24-61	4233	RU	JCS	
F	1	9/32" Notch was 5/16" Hole	12-20-60	3745	M.A.F.		
E	1	"E" HOLE WAS 5/16 D.	11-4-60	3377			
D	2	DIM. 5/8 WAS 1/8 3 1/2 WAS 3	10-26-60	3310	J.C.B.		
C	1	"E" HOLE WAS 1/2 "C" HOLE	10-17-60	3205			
B	4	FOUR "D" HOLES ADDED					
B	3	FOUR "B" HOLES RELOCATED					
B	2	ONE "A" HOLE RELOCATED					
A	1	5/8 NOTCH ADDED	10-7-60	#			
A	1	REDRAWN & REVISED	10-7-60	#			

PERSONS RECEIVING THIS DRAWING

THE TECHNICAL MATERIEL CORPORATION claims proprietary right in the material disclosed herein. This drawing is issued in confidence for engineering information only and may not be reproduced or used to manufacture anything shown herein without permission from THE TECHNICAL MATERIEL CORPORATION to the contrary. This drawing is loaned for mutual assistance and is subject to recall at any time.

Property of:
THE TECHNICAL MATERIEL CORPORATION
MAMARONECK, NEW YORK

TOLERANCES		SCALE: Do NOT SCALE	
DEC. DIM. ±		MAXIMUM ALLOWABLE TOLERANCES HAVE BEEN DETERMINED AND ANY DEVIATIONS WILL BE CAUSE FOR REJECTION.	
FRAC. DIM. ±		REMOVE ALL BURRS AND SHARP EDGES	
ANGULAR DIM. ±			

REQ. PER UNIT	CHG-1	MF/RF SECTION	10-7-60
	MODEL	PROJECT NO.	ASS'Y. NO.
			DATE
USED ON			