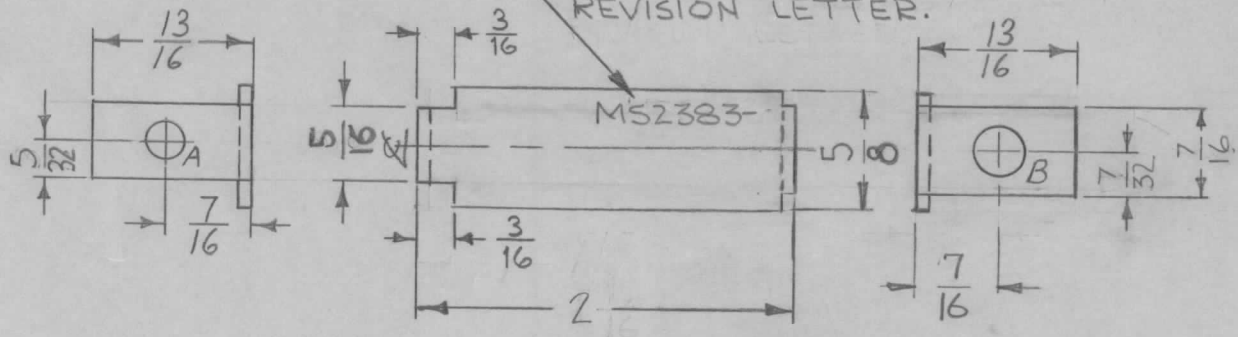
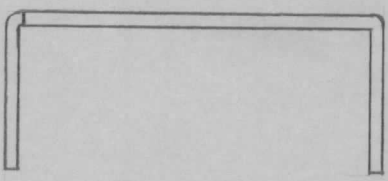


REQ. PER. UNIT	USED ON			MS 2383	E
	MODEL	ASS'Y. NO.	DATE		
1	CHG-1	A-1965	9-16-60		

MARK TMC PART NO.
1/8 HIGH GOTHIC W/LATEST
REVISION LETTER.



HOLE LEGEND		
HOLE	DESCRIPTION	REQ.
A	3/16 DIA.	1
B	5/16 DIA.	1



NOTICE TO PERSONS RECEIVING THIS DRAWING

THE TECHNICAL MATERIEL CORPORATION claims proprietary right in the material disclosed hereon. This drawing is issued in confidence for engineering information only and may not be reproduced or used to manufacture anything shown hereon without permission from THE TECHNICAL MATERIEL CORPORATION to the user. This drawing is loaned for mutual assistance and is subject to recall at any time.

Property of:
THE TECHNICAL MATERIEL CORPORATION
MAMARONECK, NEW YORK

F	2" WAS 2 1/8	10-27-77	21583	PH	W.B.	W.B.
E	ADD TMC PART NO CHGD 1/4 TO 7/32 & 1/2 TO 7/16	1-25-67	17719	RME	JCB	W.B.
D	2-1/16 DIM WAS 1-15/16, 1/4 WAS 7/32, 1/2 WAS 7/16 "B" HOLES WERE 1/4 DIA	4-21-61	4754	DM	JCB	W.B.
C	(2) 3/16" NOTCHES ADDED	4-3-61	4568	WAF	W.B.	JCB
B	RIGHT SIDE VIEW REDESIGNED	12-22-60	3810	W.A.F.	JCB	W.B.
A	COMPLETELY REDESIGNED	11-22-60	3549	DM	JCB	W.B.

REQ.	ITEM	PART NO.	DESCRIPTION	SYMBOL
		.064	THE TECHNICAL MATERIEL CORP. MAMARONECK, NEW YORK BRACKET, RESISTOR MTG.	
		STOCK SIZE		
		ALUMINUM		
		MATERIAL		
		5052-H32		
		TYPE & TEMPER	DRAWN	
		HEATTREAT. SPEC.	CHECKED	
		5404 YELL IRIDITE		
		FINISH & SPEC. NO.	ELEC. DES. APP	
			MECH. DES. APP	
			MS 2383	F

ISSUE	ITEM	CHANGED FROM	DATE	CH. NO.	DRAFTS	CHECKER	ENG. APP.
TOLERANCES		SCALE: FULL					
DEC. DIM. ±		MAXIMUM ALLOWABLE TOLERANCES HAVE BEEN DETERMINED AND ANY DEVIATIONS WILL BE CAUSE FOR REJECTION. REMOVE ALL BURRS AND SHARP EDGES					
FRAC. DIM. ± 1/64							
ANGULAR DIM. ±							