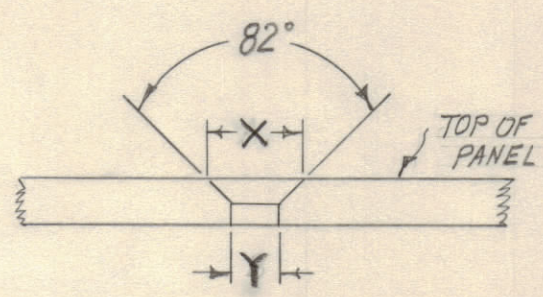
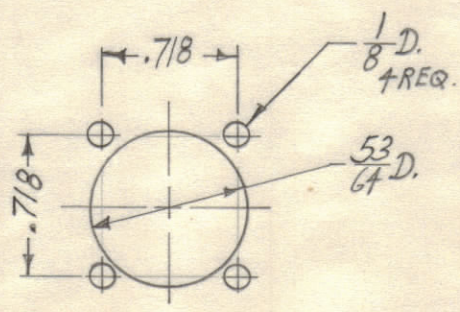


DIM.	# 3 F.H.S	# 6 F.H.S
X	.204	.284
Y	#47 (.078) TAP 3-48	#27 (.144)



C'SINK DETAIL "A & B"



"F" DETAIL
14 REQ.

FINISH: FRONT & EDGES ONLY.
S404 YELLOW IRIDITE.
S114 ZINC CHROMATE PRIMER.
S115 SMOOTH GREY ENAMEL.

- NOTES:
1-LATERAL BOW OF PANEL MUST BE KEPT TO .031 TOLERANCE.
2-MILL ALL EDGES
3-HOLES MUST BE DRILLED.
4-PANEL MUST BE FREE OF ALL MACHINING MARKS GOUGES & SCRATCHES.
IF NECESSARY SAND FRONT OF PANEL WITH NO. 120 GRIT SANDPAPER.
5-ALL THEADED HOLES & HOLE DIA. MUST BE HELD AFTER ETCHING.

- A- DR. & TAP & C'SINK FOR 3-48 F.H.S. (SEE DETAIL) 12 REQ.
B- DR & C'SINK FOR 6-32 F.H.S (SEE DETAIL) 12 "
C ~ 13/16 DIA. 8 "
D ~ .078 DIA. 3 "
E ~ 1/4 X 13/32 SLOT 4 "
F- SEE DETAIL 14 "

UNLESS OTHERWISE SPECIFIED DIMENSIONS ARE IN INCHES AND INCLUDE CHEMICALLY APPLIED OR PLATED FINISHES	
DECIMALS .X ± .05 .XX ± .01 .XXX ± .005	FRACTIONS ± 1/64 ANGLES ± 0° 30'
TOLERANCES	

ISSUE	ZONE	DESCRIPTION	DATE	CH. NO.	DRAFTS	CHECKER	ENG. APP.
TOLERANCES		SCALE: FULL					
DEC. DIM. ± 1/64 FRAC. DIM. ± 1/64 ANGULAR DIM. ±		MAXIMUM ALLOWABLE TOLERANCES HAVE BEEN DETERMINED AND ANY DEVIATIONS WILL BE CAUSE FOR REJECTION. REMOVE ALL BURRS AND SHARP EDGES					

REQ PER UNIT	MODEL	SECTION	ASSY. NO.	DATE
1	SPP-12			8-22-60

REQ. ITEM	PART NO.	DESCRIPTION	SYMBOL
3/16		THE TECHNICAL MATERIEL CORP. MAMARONECK, NEW YORK	
		ALUMINUM	
		FRONT PANEL	
		SPP-12	
		2025-T3	
		TYPE & TEMPER	
		HEAT TREAT. SPEC.	
		FINISH & SPEC. NO.	
		705	MS-2371