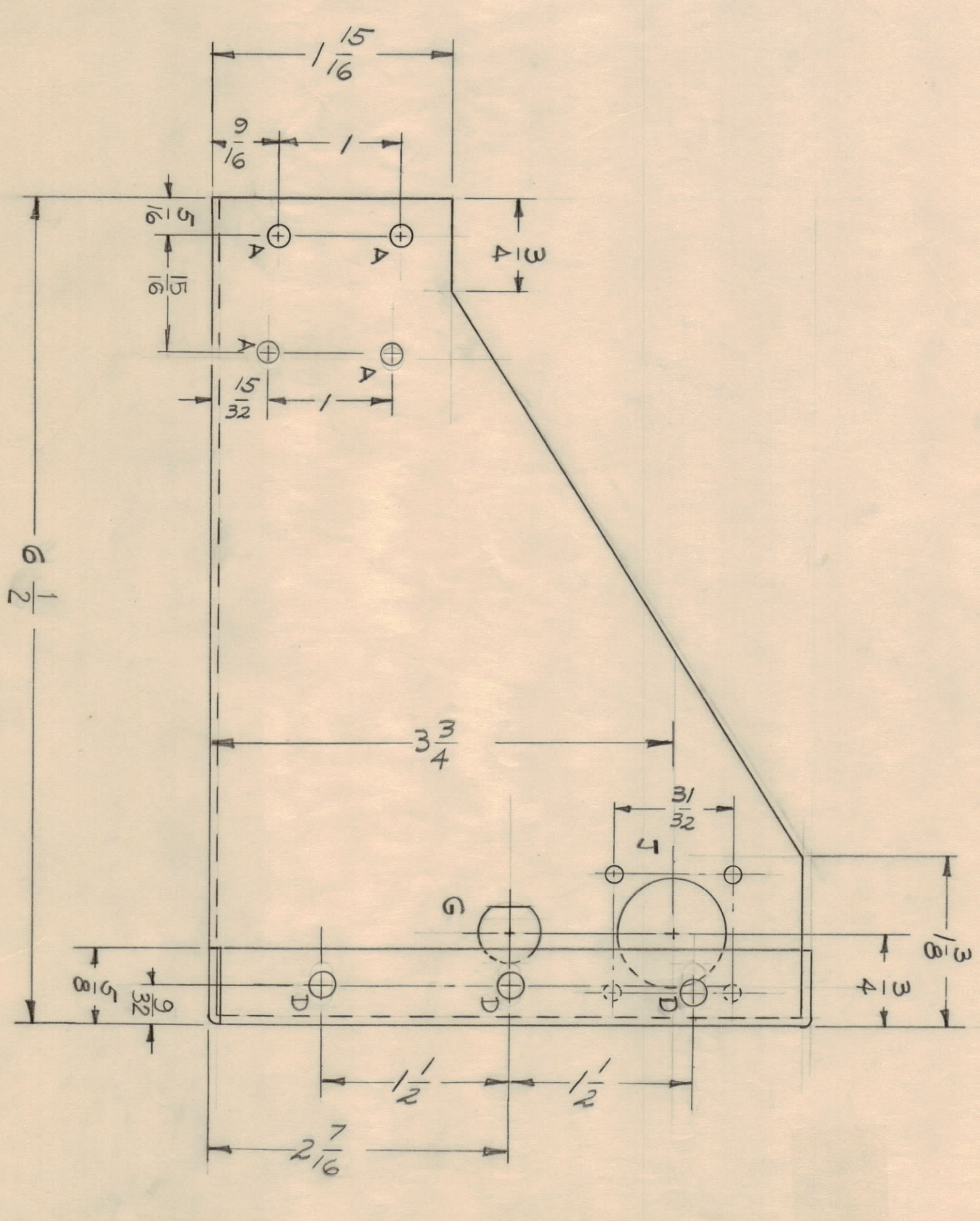
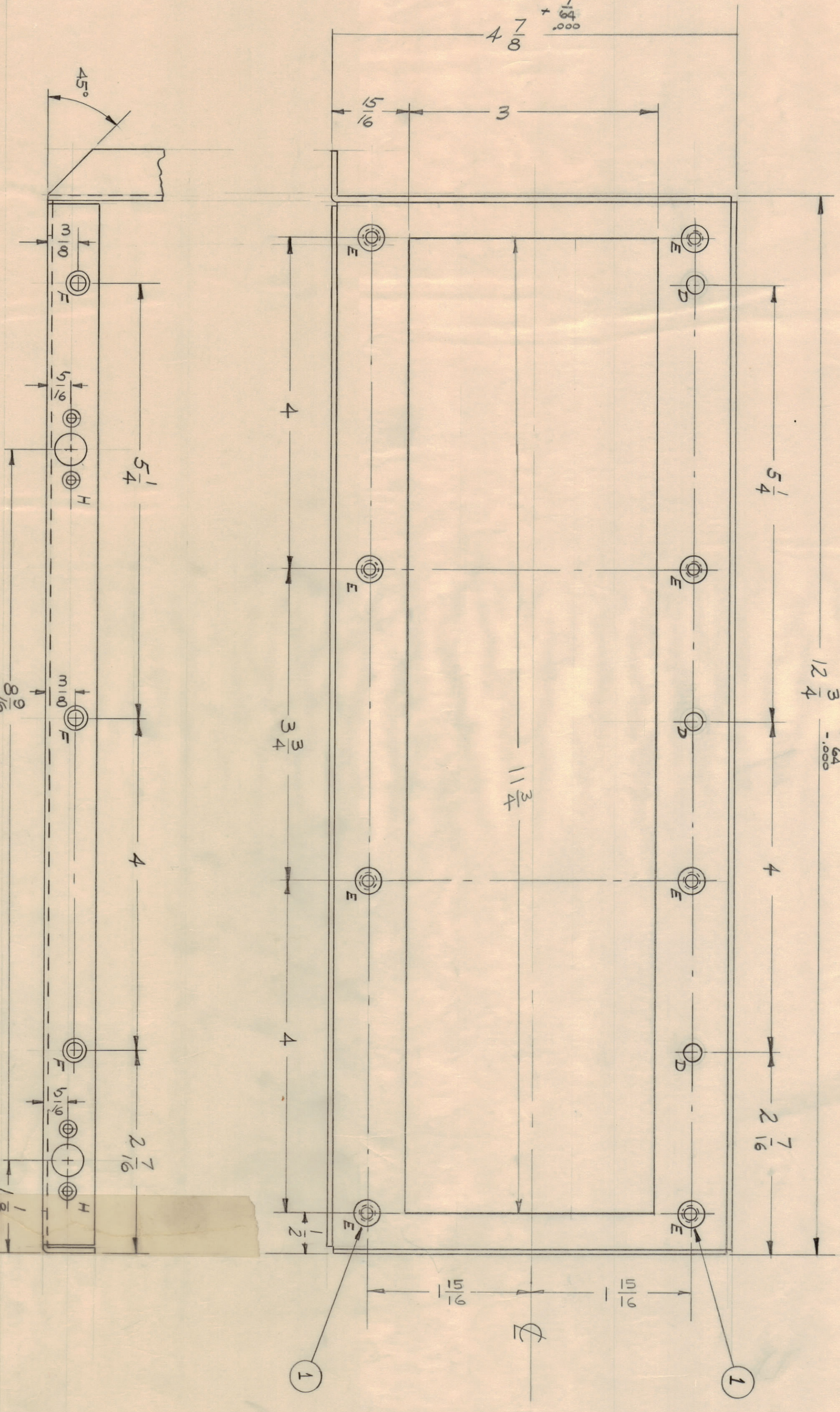
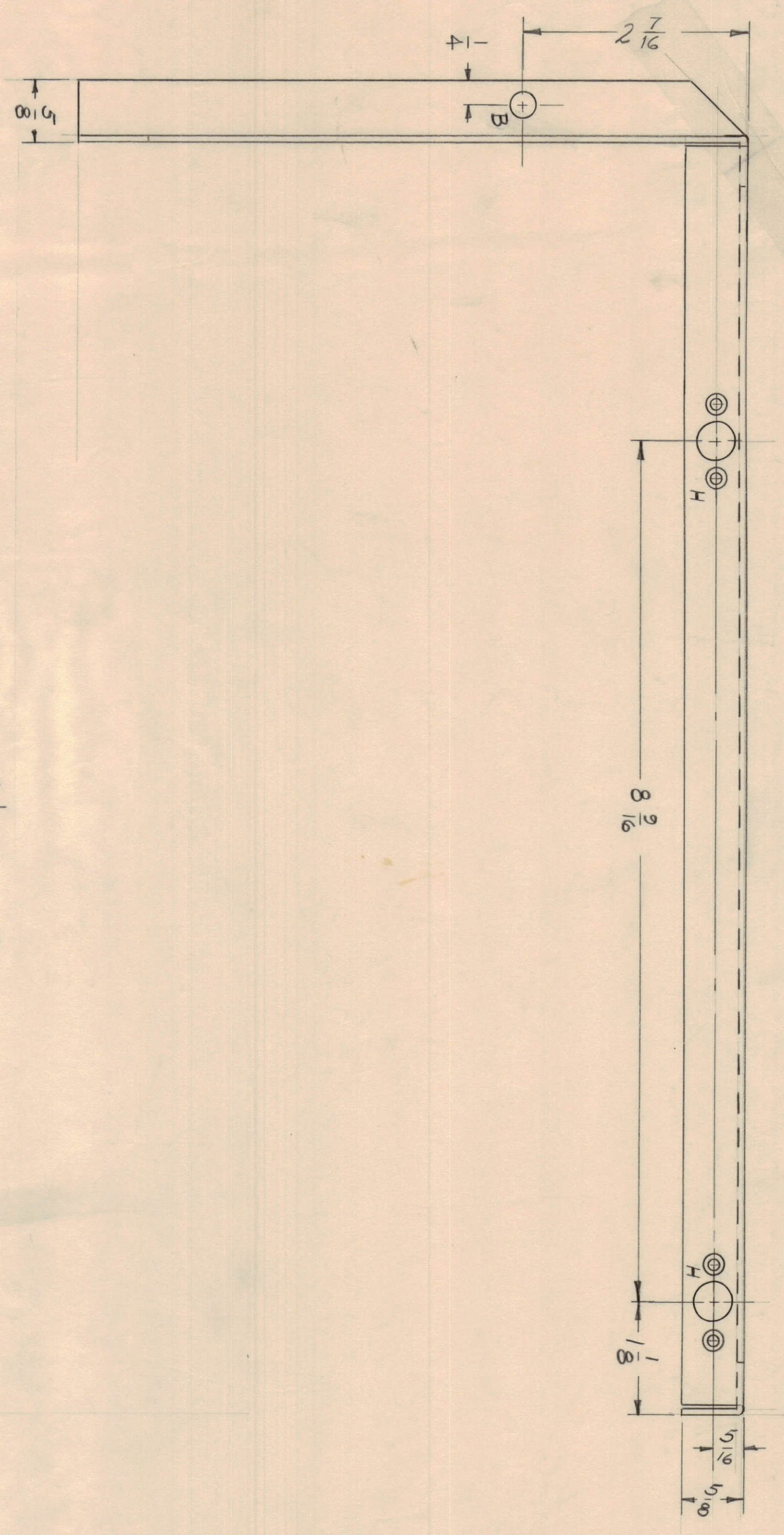


NOTICE TO PERSONS RECEIVING THIS DRAWING
 THE TECHNICAL MATERIEL CORPORATION claims
 proprietary right in the material disclosed herein.
 This drawing is issued in confidence for engineering
 information only and may not be reproduced or used
 to manufacture any technical materiel without per-
 mission from THE TECHNICAL MATERIEL CORPORA-
 tion. This drawing is loaned for mutual
 assistance and is subject to recall at any time.
 Property of:
 THE TECHNICAL MATERIEL CORPORATION
 MAMARONECK, NEW YORK



A ~ 11/64 (.171) D.	4 REQ.
B ~ 1/4 (.250) D.	1 REQ.
C ~ Deleted	
D ~ 13/64 (.203) D	6 REQ.
E ~ #2 DRILL (.221) FOR NF-129-832-4	8 REQ.
F ~ DRILL ϕ C/SINK FOR G-32 FHS.	3 REQ.
G ~	
H ~	

REV.	DATE	BY	CHKD.	DESCRIPTION
A	7-15-60	LD-762		REVISED DIMS. ADDED
B	9-15-60	LD-762		REVISED DIMS. ADDED
C	11-15-60	LD-762		REVISED DIMS. ADDED
D	1-15-61	LD-762		REVISED DIMS. ADDED
E	3-15-61	LD-762		REVISED DIMS. ADDED
F	5-15-61	LD-762		REVISED DIMS. ADDED
G	7-15-61	LD-762		REVISED DIMS. ADDED
H	9-15-61	LD-762		REVISED DIMS. ADDED

REV.	DATE	BY	CHKD.	DESCRIPTION
A	7-15-60	LD-762		REVISED DIMS. ADDED
B	9-15-60	LD-762		REVISED DIMS. ADDED
C	11-15-60	LD-762		REVISED DIMS. ADDED
D	1-15-61	LD-762		REVISED DIMS. ADDED
E	3-15-61	LD-762		REVISED DIMS. ADDED
F	5-15-61	LD-762		REVISED DIMS. ADDED
G	7-15-61	LD-762		REVISED DIMS. ADDED
H	9-15-61	LD-762		REVISED DIMS. ADDED

REQ. ITEM	PART NO.	DESCRIPTION	QTY.
1	NT-129-832-4	NUT, ROUND SWAGE TYPE	4
2	5052-H32	ALUMINUM	6
3	5404 YEL. RDPITE	HEAT TREAT SPEC.	8

MS-2340 B