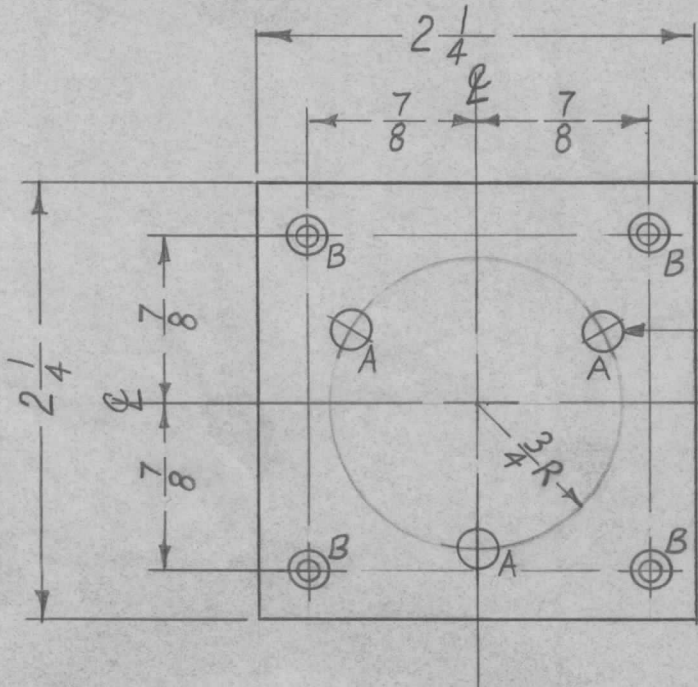


REQ. PER UNIT	USED ON			MS-2316
	MODEL	ASS'Y. NO.	DATE	
1	GPT-40K	AX-209	6-29-60	



A ~  $\frac{13}{64}$  D. 3 REQ.  
 B - DR. & C'SINK FOR 6-32 F.H.S. 4 REQ.

(3) "A" HOLES  
 120° APART ON 3/4 RADIUS

UNLESS OTHERWISE SPECIFIED DIMENSIONS ARE IN INCHES AND INCLUDE CHEMICALLY APPLIED OR PLATED FINISHES		
DECIMALS	TOLERANCES	FRACTIONS
.X ± .05		± 1/64
.XX ± .01		ANGLES ± 0° 30'
.XXX ± .005		

CUT HERE  
 GUARANTEED  
 2-66

REF: MS-2224(1)

								REQ.	ITEM	PART NO.	DESCRIPTION	SYMBOL	
										$\frac{1}{8}$ THK. STOCK SIZE	THE TECHNICAL MATERIEL CORP. MAMARONECK, NEW YORK		
										ALUMINUM	PLATE - CAP, MOUNT		
										MATERIAL			
ISSUE	ITEM	CHANGED FROM	DATE	CH. NO.	DRAFTS	CHECKER	ENG. APP.			5052-H32	<i>[Signature]</i>	<i>[Signature]</i>	
TOLERANCES			SCALE: FULL										
DEC. DIM. ±			MAXIMUM ALLOWABLE TOLERANCES HAVE BEEN DETERMINED AND ANY DEVIATIONS WILL BE CAUSE FOR REJECTION. REMOVE ALL BURRS AND SHARP EDGES										
FRAC. DIM. ± $\frac{1}{64}$													
ANGULAR DIM. ±										S404 YELL. IRIDITE	<i>[Signature]</i>	MS-2316	
										FINISH & SPEC. NO.	ELEC. DES. APP.	MECH. DES. APP.	