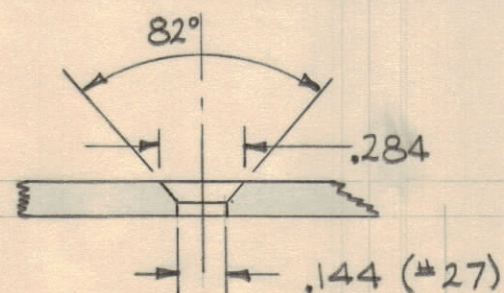
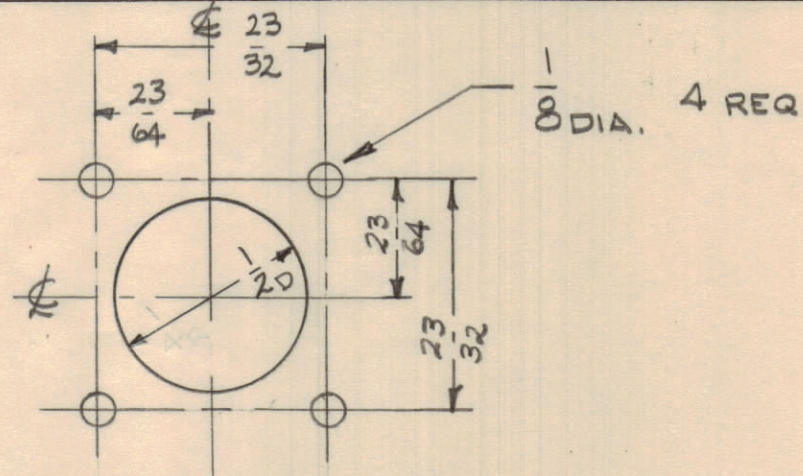


A ~ 1/4 X 13/64 SLOTS  
 B ~ #47 (.078) DIA.  
 C - SEE C'SNK DETAIL  
 D - SEE DETAIL

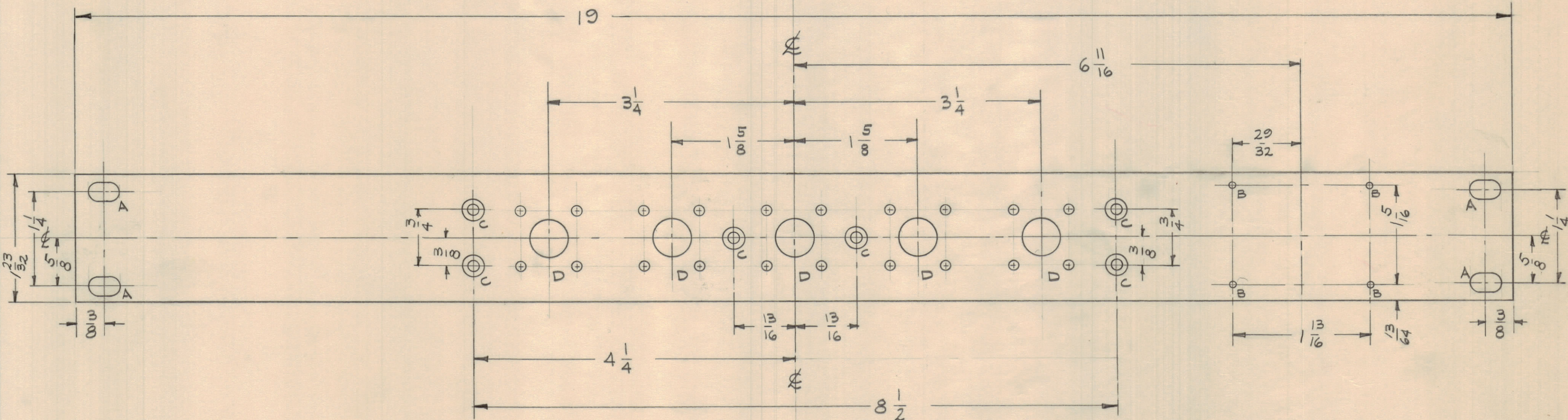
4 REQ.  
 4 REQ.  
 6 REQ.  
 5 REQ.



DETAIL "C"  
 6 REQ.



DETAIL "D"  
 5 REQ.



NOTE: FINISH

- S-404 YEL IRIDITE
  - S-114 ZINC CHROMATE PRIMER
  - S-115 SMOOTH GRAY ENAMEL
  - OR PRIME & PAINT TO CUSTOMERS SPECIFICATIONS.
- FRONT EDGES ONLY

MACHINING

- 1~ LATERAL BOW OF PANEL MUST BE KEPT TO .031 TOLERANCE
- 2~ MILL ALL EDGES
- 3~ HOLES MUST BE DRILLED
- 4~ PANEL MUST BE FREE OF ALL MACHINING MARKS, GOUGES AND SCRATCHES IF NECESSARY, SAND FRONT OF PANEL WITH NO. 120 GRIT SANDPAPER.

REF: (4) LD-752

REQ. ITEM	PART NO.	DESCRIPTION	SYMBOL
	3/16 THK.	THE TECHNICAL MATERIEL CORP.	
	STOCK SIZE	MAMARONECK, NEW YORK	
	ALUMINUM	MACHINING, FRONT PANEL	
	MATERIAL	HFD - 6	
	2024-T3		
	TYPE & TEMPER	LoBILLO	
		DRAWN	ELEC. DES. APP.
		HECKED	MECH. DES. APP.
			FINAL APPROVAL
			MS-2307

ISSUE ZONE	DESCRIPTION	DATE	CH. NO.	DRAFTS	CHECKER	ENG. APP.
	TOLERANCES	SCALE: DO NOT SCALE				
	DEC. DIM. ±	MAXIMUM ALLOWABLE TOLERANCES HAVE BEEN DETERMINED AND ANY DEVIATIONS WILL BE CAUSE FOR REJECTION.				
	FRAC. DIM. ±	REMOVE ALL BURRS AND SHARP EDGES				
	ANGULAR DIM. ±	1/64				

REQ PER UNIT	MODEL	SECTION	ASS'Y. NO.	DATE
1	HFD-6			6-17-60