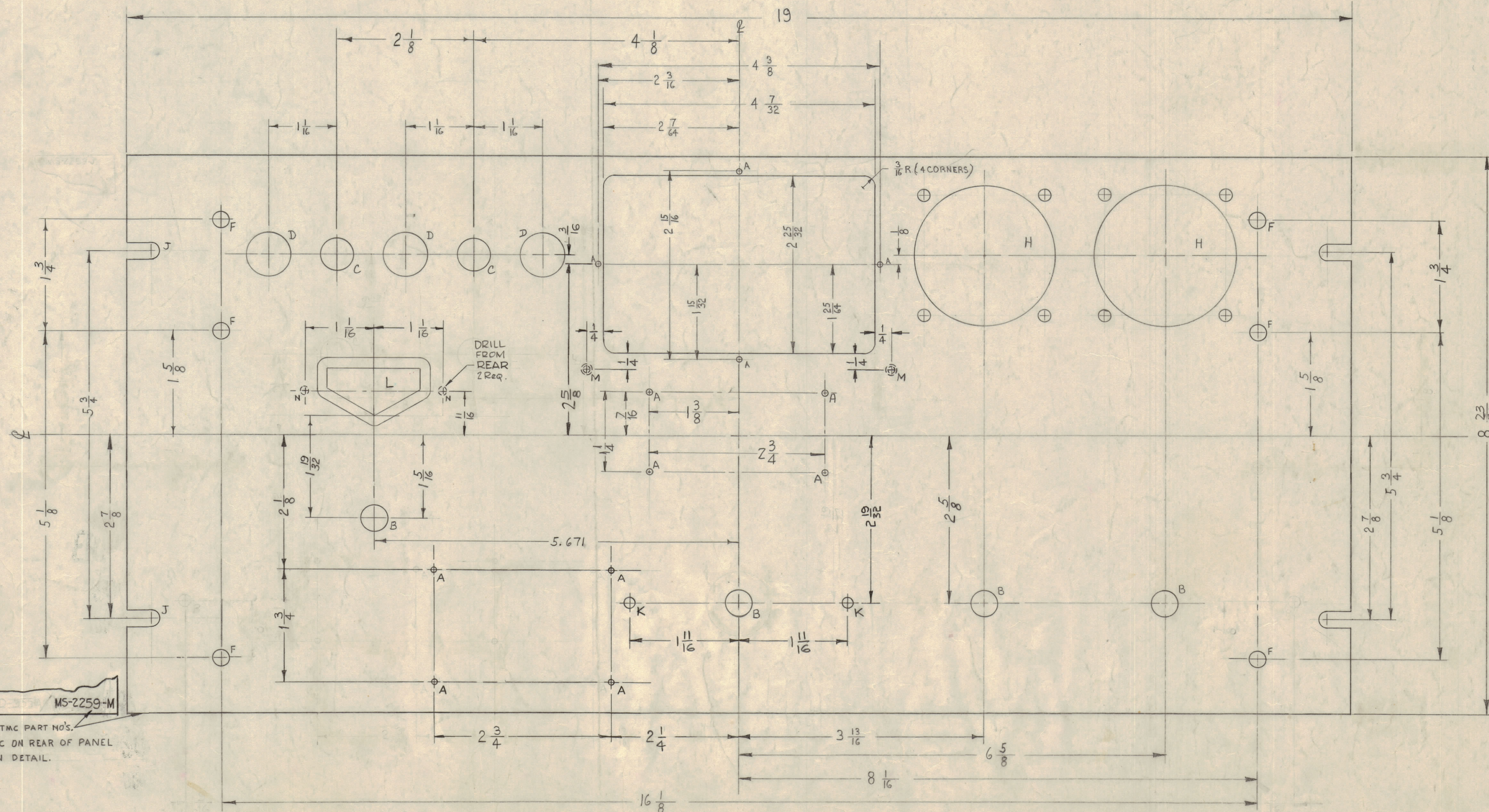
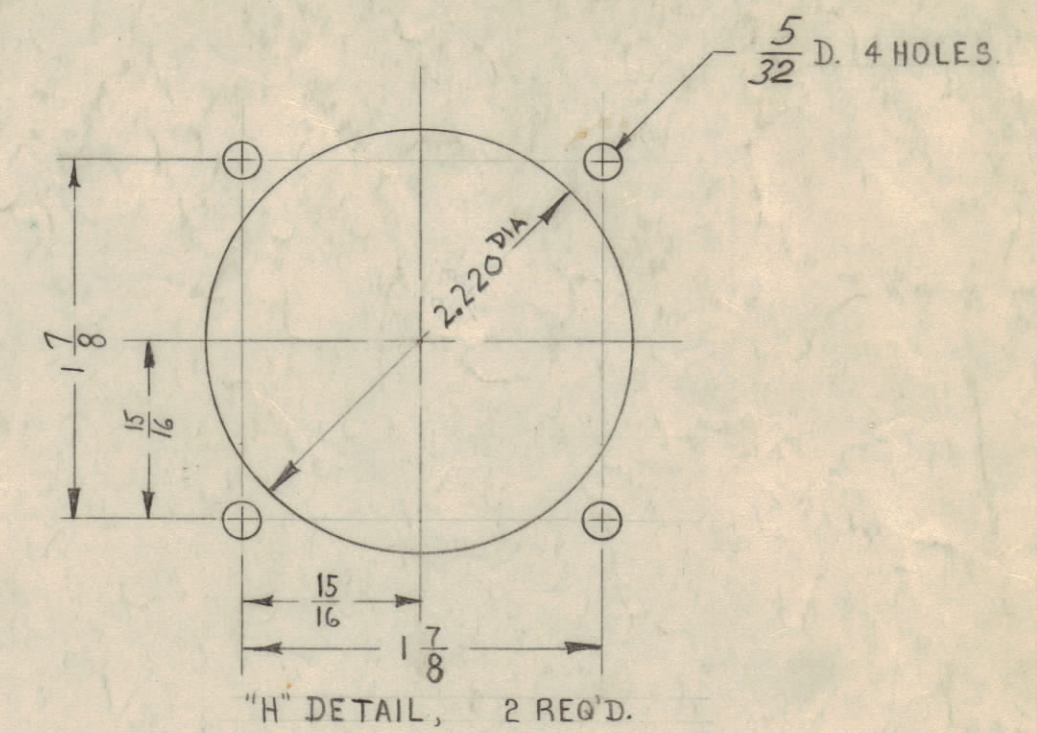
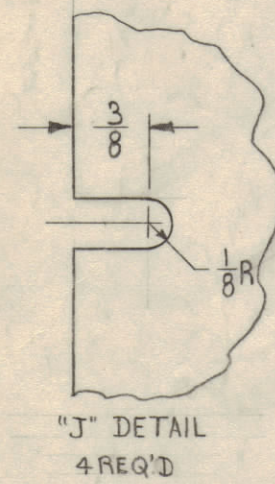


IF IT IS FOUND DESIRABLE TO CHANGE ANY TOLERANCE OR OTHER DETAIL SPECIFIED ON THIS DRAWING NOTIFY THE PURCHASER PROMPTLY.  
 MAXIMUM ALLOWABLE TOLERANCES HAVE BEEN DETERMINED AND DEVIATIONS WILL BE CAUSE FOR REJECTION. REMOVE ALL BURRS AND SHARP EDGES

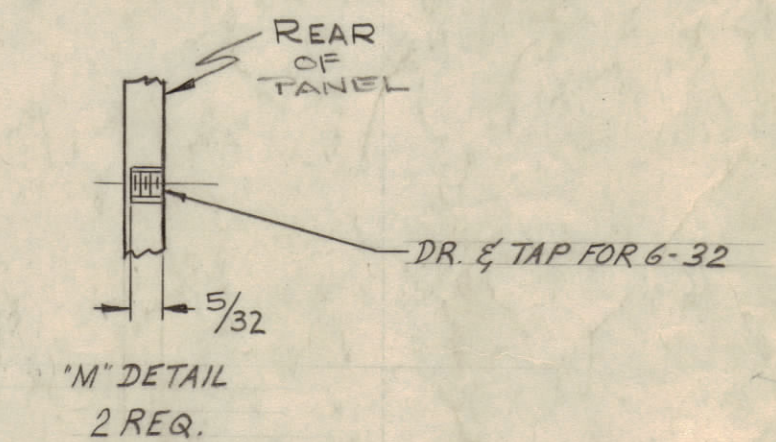
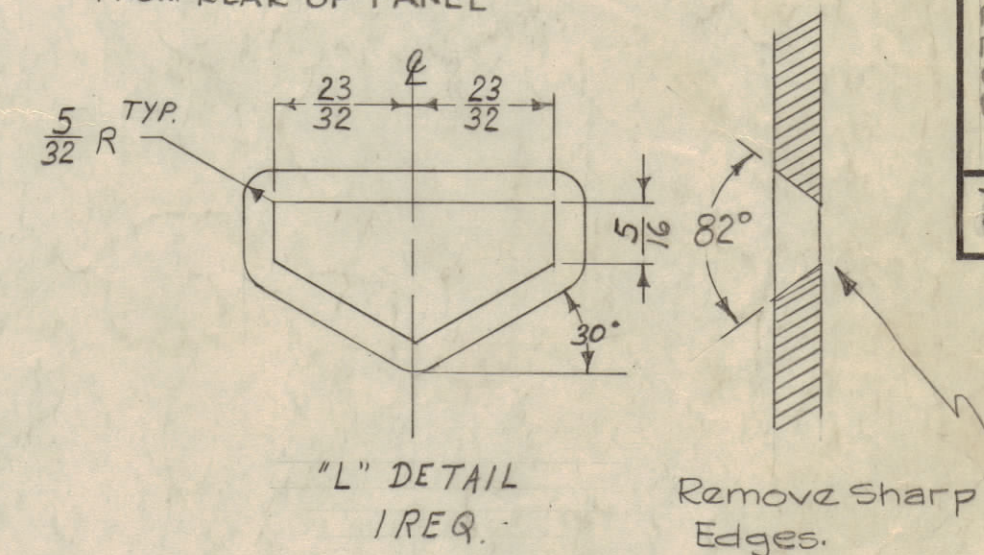
**NOTICE TO PERSONS RECEIVING THIS DRAWING**

THE TECHNICAL MATERIEL CORPORATION claims proprietary right in the material disclosed hereon. This drawing is issued in confidence for engineering information only and may not be reproduced or used to manufacture anything shown hereon without permission from THE TECHNICAL MATERIEL CORPORATION to the user. This drawing is loaned for mutual assistance and is subject to recall at any time.

Property of:  
 THE TECHNICAL MATERIEL CORPORATION  
 MAMARONECK, NEW YORK



- A - #47 DRILL (0.078) 12 REQ'D.
- B - 13/32 (.406) D. 4 "
- C - 1/2 (.500) D. 2 "
- D - 1/16 (.687) D. 3 "
- E - 1" (1.000) D. DELETED 1 "
- F - 1/4 (.250) D. 6 "
- G - DRILL & C'SINK FOR 8-32 F.H.S. 2 " DELETED
- H - SEE DETAIL 8 "
- J - SEE DETAIL 4 "
- K - 11/64 DIA 2 "
- L - SEE DETAIL 1 "
- M - SEE DETAIL 2 "
- N - #55 DRILL - 1/8 DEEP FROM REAR OF PANEL 2 REQ



MS-2259-M  
 METAL STAMP TMC PART NO'S.  
 1/16" HIGH GOTHIC ON REAR OF PANEL AS SHOWN ON DETAIL.

N	1	H' DETAIL: 2.220 DIA. WAS 2 3/16	2-11-65	13489	AE	YH	YH
M	1	OBSELETE NOTE ADDED	8-29-63	9857	AE	YH	YH
L	1	SUPERSEDED NOTE ADDED	7-25-63	9468	AE	YH	YH
K	1	DELETED 2" HOLES, 1/64 DIA.	7-26-63	9399	AE	YH	YH
J	1	2" HOLES 3/16 DIA. DELETED	10-24-63	5167	AE	YH	YH
H	1	DIM 8 3/8 WAS 8 1/4	9-26-61	4752	AE	YH	YH
G	3	(2) "P" HOLES ADDED	2-28-63	4283	AE	YH	YH
F	1	(4) "A" HOLES ADDED	11-16-61	3911	AE	YH	YH
E	1	DIM 7/16 WAS 11/16	11-16-61	3490	AE	YH	YH
D	1	ON "L" DETAIL & WAS 75°	11-8-60	3438	AE	YH	YH
C	1	TWO "M" HOLES ADDED	10-24-63	3246	AE	YH	YH
B	1	(4) "A" HOLES RELOCATED	10-13-60		AE	YH	YH
A	7	2 1/32 DIM WAS 2 3/8			AE	YH	YH
	6	2 5/8 DIM WAS 2 1/16			AE	YH	YH
	5	3/16 DIM WAS 1/8			AE	YH	YH
	4	"L" DETAIL ADDED			AE	YH	YH
	3	TWO "C" HOLES RELOCATED			AE	YH	YH
	2	TWO "G" & ONE "E" HOLE DELETED			AE	YH	YH
	1	TWO ("F" & "K") HOLES ADDED			AE	YH	YH

**SUPERSEDED**  
 DIRECTLY REPLACED BY MS-3458 EXN. # 9468

**OBSELETE** EMN # 9857 29 AUG 1963 A.K.  
 FOR SPARE PARTS ONLY  
 FOR NEW CHG-2A UNITS SEE MS-3458

MACHINING -  
 1- LATERAL BOW OF PANEL MUST BE KEPT TO .031 TOLERANCE.  
 2- MILL ALL EDGES.  
 3- HOLES MUST BE DRILLED.  
 4- PANEL MUST BE FREE OF ALL MACHINING MARKS GOUGES & SCRATCHES.  
 IF NECESSARY SAND FRONT OF PANEL WITH NO. 120 GRIT SANDPAPER.

FINISH -  
 S404 YELLOW IRIDITE  
 S114 ZINC CHROMATE PRIMER } FRONT &  
 S115 TMC SMOOTH GREY ENAMEL } EDGES ONLY

REF: LD-955 (FOR CHG-2 ONLY)  
 REF: LD-736 (8) (FOR CHG-1 ONLY)

REQ. ITEM	PART NO.	DESCRIPTION	SYMBOL
	3/16 THK.	ALUMINUM	
	2024-T3	FRONT PANEL MACHINING	
		HEAT TREAT. SPEC.	
	SEE NOTE	FINISH & SPEC. NO.	

CHG-1	MODEL	PROJECT NO.	ASSY. NO.	DATE
				2-4-60