

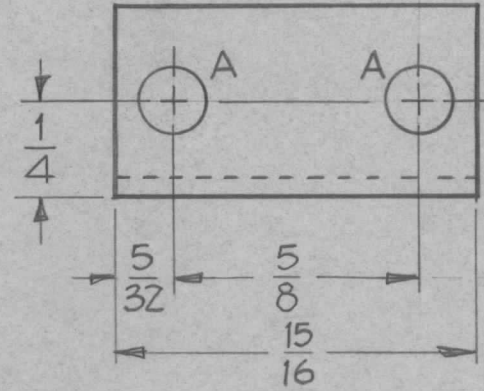
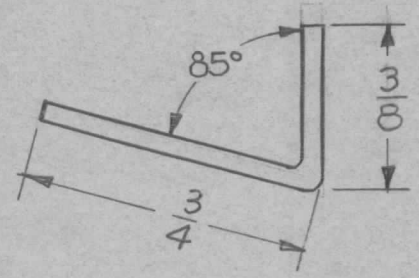
REQ. PER UNIT	USED ON			MS-2252	D
	MODEL	ASS'Y. NO.	DATE		
3	GPT-40K	AX-209	5-6-60		

HOLES REQ
A ~ 11/64 (.171) DIA. 2

UNLESS OTHERWISE SPECIFIED
DIMENSIONS ARE IN INCHES AND INCLUDE
CHEMICALLY APPLIED OR PLATED FINISHES

DECIMALS	TOLERANCES	FRACTIONS
.X ± .05		± 1/64
.XX ± .01		ANGLES
.XXX ± .005		± 0° 30'

CUT HERE
GUARANTEED
2-66



* HEAT TREATMENT
2 HR'S @ 600°F
‡ AIR COOL

Refs MS-1978

D	I	HEAT TREAT. NOTE ADD	5.8.64	11384	WJB	@	Q10	REQ. ITEM	PART NO.	DESCRIPTION	SYMBOL	
C	1	3/8 WAS 1/2	3-1964	11063	A.M.	@	Q20	.040		THE TECHNICAL MATERIEL CORP. MAMARONECK, NEW YORK SPRING, CONTACT, GROUND		
B	1	FINISH WAS NATURAL	7-12-62	6908	GF.			STOCK SIZE				
A	1	STOCK SIZE WAS .051	11-2-60	3361	W.F.			BERYLIUM COPPER				
ISSUE ITEM		CHANGED FROM	DATE	CH. NO.	DRAFTS	CHECKER	ENG. APP.	MATERIAL				
TOLERANCES			SCALE: DOUBLE SIZE					*				
DEC. DIM. ± FRAC. DIM. ± ANGULAR DIM. ±			MAXIMUM ALLOWABLE TOLERANCES HAVE BEEN DETERMINED AND ANY DEVIATIONS WILL BE CAUSE FOR REJECTION: REMOVE ALL BURRS AND SHARP EDGES					TYPE & TEMPER HEAT TREAT. SPEC.		DRAWN CHECKED		FINAL APPROVAL
								SILVERPLATE .0003				MS-2252
								FINISH & SPEC. NO.		ELEC. DES. APP. MECH. DES. APP.		D