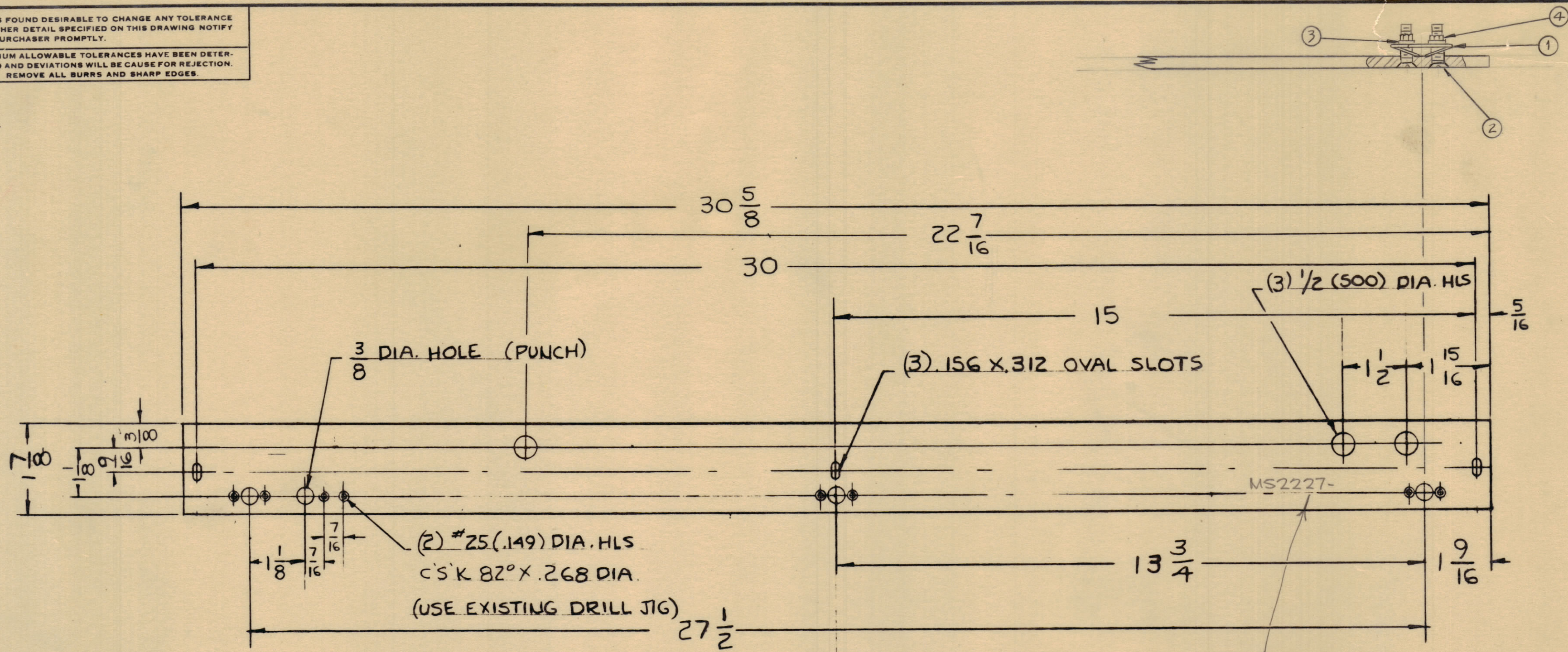


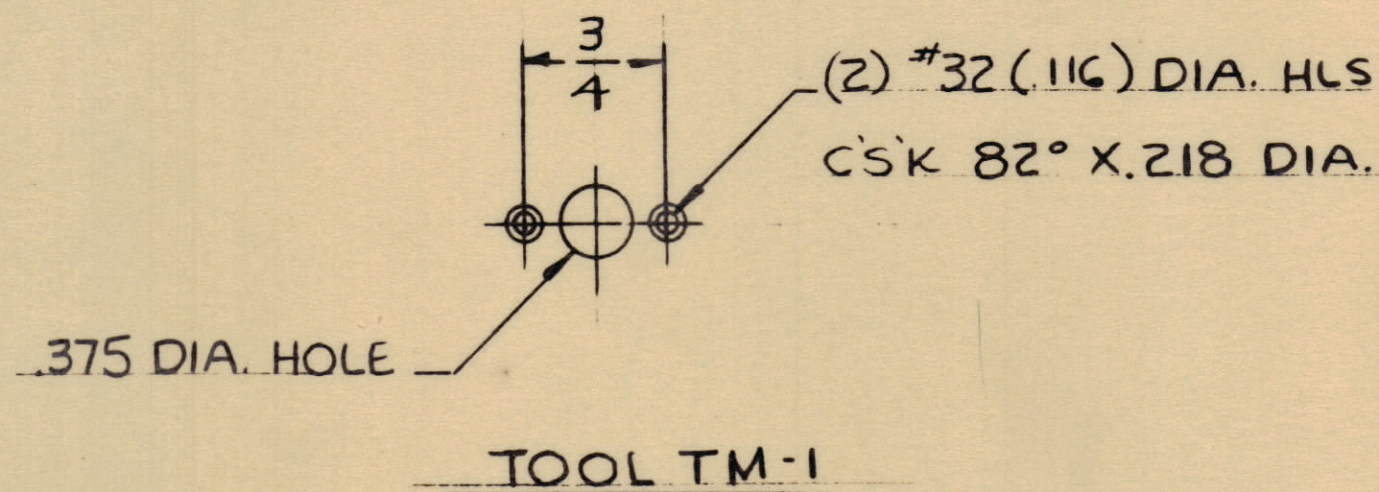
IF IT IS FOUND DESIRABLE TO CHANGE ANY TOLERANCE OR OTHER DETAIL SPECIFIED ON THIS DRAWING NOTIFY THE PURCHASER PROMPTLY.

MAXIMUM ALLOWABLE TOLERANCES HAVE BEEN DETERMINED AND DEVIATIONS WILL BE CAUSE FOR REJECTION. REMOVE ALL BURRS AND SHARP EDGES.



MARK TMC PART NO.
1/8 HIGH GOTHIC W/LATEST
REV. LETTER.

MS2227 B



UNLESS OTHERWISE SPECIFIED DIMENSIONS ARE IN INCHES AND INCLUDE CHEMICALLY APPLIED OR PLATED FINISHES

DECIMALS	FRACTIONS
.X ± .05	± 1/64
.XX ± .01	ANGLES
.XXX ± .005	± 0° 30'

B	ADD TMC P/N 'MARENG'						
A	17.2 WAS 'SCFP0348B8'	3-3-67	17875	444			
A	1 ITEM 1,2,3,4 ADDED	10/15/60	3197				
ISSUE	ITEM	CHANGED FROM	DATE	CH. NO.	DRAFTS	CHECKER	ENG. APP.
TOLERANCES		SCALE:					
ALL	DEC. DIM ±	DRILL, PUNCH, COMMERCIAL STOCK					
OTHERS	FRAC. DIM ±	SIZES AND MANUFACTURERS					
	ANGULAR DIM ±	TOLERANCES ARE NOT INCLUDED.					

6	4	NTH0348BN6	NUT	
6	3	LWS03MRN	LOCKWASHER	
6	2	SCFP0348BN8	SCREW	
3	1	FS-102-1	SPRING TYPE S-CLIP	
REQ. ITEM	PART NO.	DESCRIPTION	SYMBOL	
.125		THE TECHNICAL MATERIEL CORP.		
		MAMARONECK, NEW YORK		
ALUMINUM		LEFTSIDE STRIP		
MATERIAL		WEIGHT PER FC.		
5052-H32		REAR SHIELD		
TYPE & TEMPER		WF		
		DRAWN	ELEC. DES. APP.	MECH. DES. APP.
		file		
HEAT TREAT. SPEC.		CHECKED	FINAL APPROVAL	
S404 IRIDITE			MS2227 B	
FINISH & SPEC. NO.				

1	GPT-40K	AP-102		6-14-60
REQ. PER UNIT	MODEL	PROJECT NO.	ASSY. NO.	DATE
USED ON				