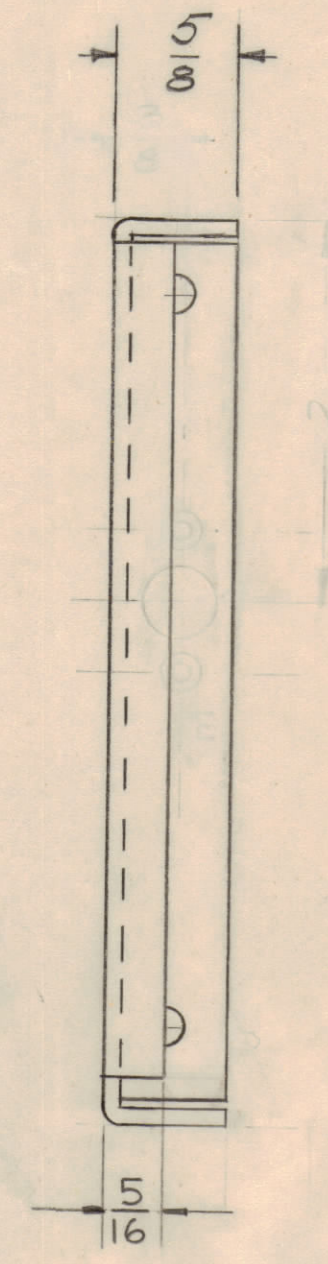
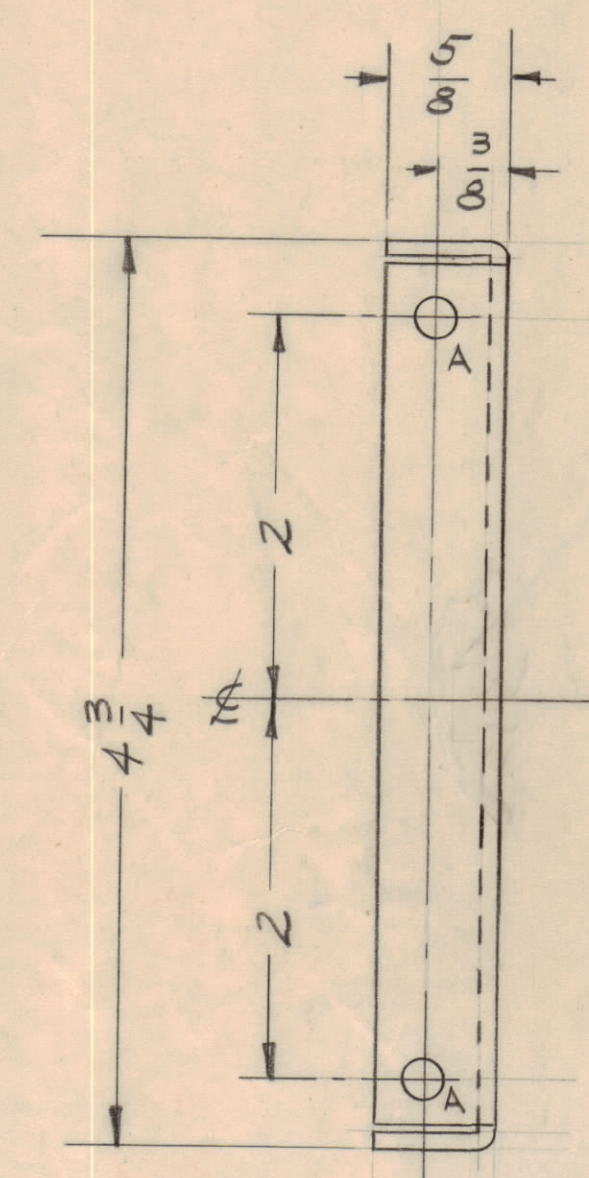
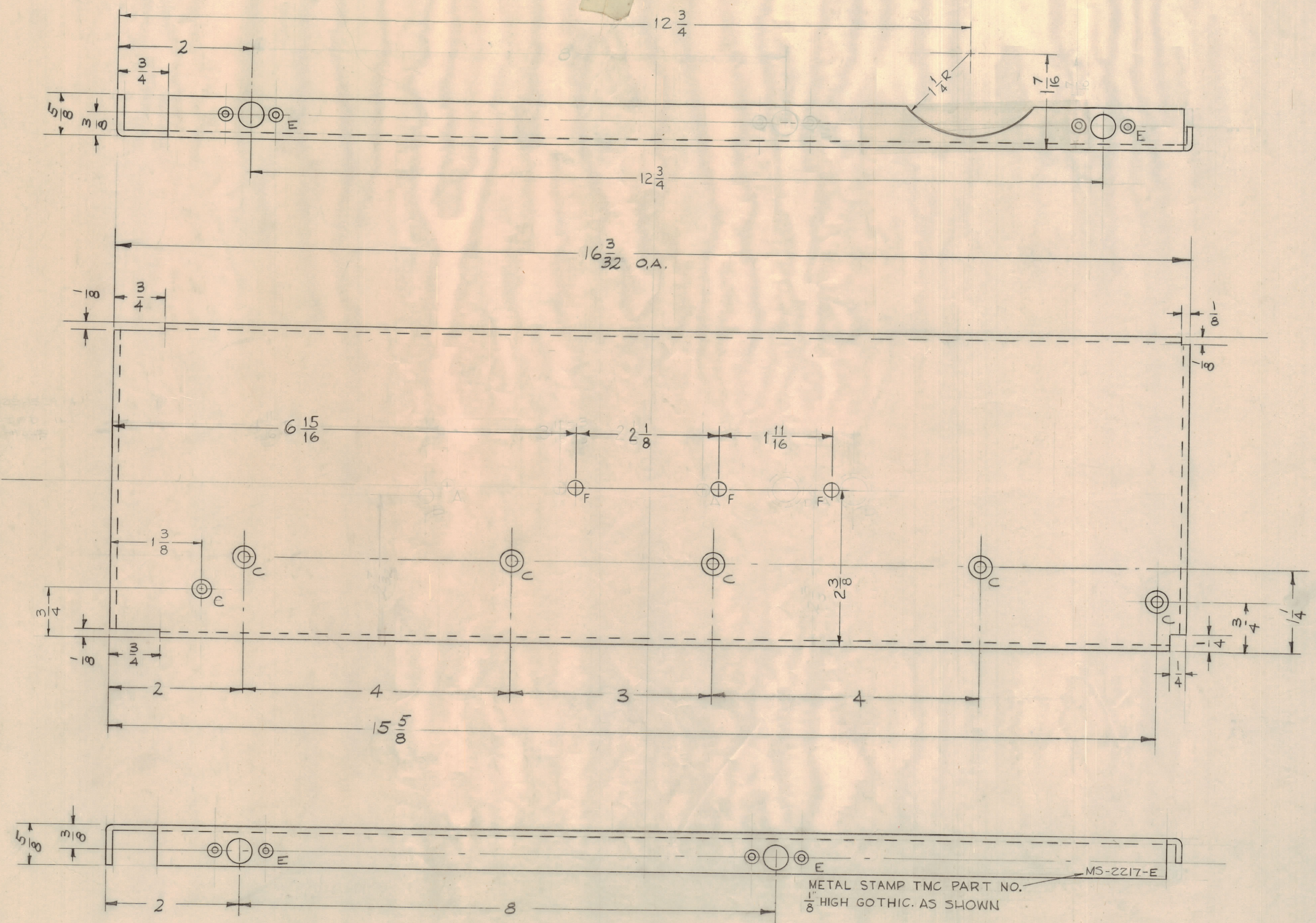


NOTICE TO PERSONS RECEIVING THIS DRAWING
 THE TECHNICAL MATERIEL CORPORATION claims proprietary right in the material disclosed hereon. This drawing is issued in confidence for engineering information only and may not be reproduced or used to manufacture anything shown hereon without permission from THE TECHNICAL MATERIEL CORPORATION to the user. This drawing is loaned for mutual assistance and is subject to recall at any time.
 Property of:
 THE TECHNICAL MATERIEL CORPORATION
 MAMARONECK, NEW YORK



A - $\frac{13}{64}$ (.203) D. 2 REQ.
 C - $\frac{5}{16}$ DIA. 6 REQ.
 E - DRILL & C/SINK FOR 3-48 4 REQ.
 F - $\frac{7}{32}$ DIA. C/SINK FOR 3 REQ. 1 REQ.
 C/SINK DETAIL FOR G-32 F.H.S.
 .287
 .144
 82°
 FLAT HEAD SCREWS

D2	DE DETAIL DELETED	11-7-61	5752	H.I.	OK	
D2	LIP CLARIFIED					
F3	E DETAIL RELOCATED					
D	(R) "F" HOLES ADDED	5-15-61	4887	M.H.	OK	
D	(S) "A" HOLES DELETED					
D	(S) DIM. WAS $\frac{1}{16}$					
D	(S) (1/7/32) Hole Deleted					
C	DA Hole was $\frac{1}{16}$ DIA. 20 Holes Added	2-14-61	4127	RU	OK	
B	CONC. OF THE HOLE'S 105% REPAIR	11-26-60	3297	DM	OK	
B	STOCK WAS .081 (F) HOLE SHED TO .12"					
A	DG $\frac{5}{32}$ DIM. WAS $\frac{1}{8}$ DIM.	9-7-60		CA	OK	
ISSUE ZONE	DESCRIPTION	DATE	CH. NO.	DRAFTS	CHECKER	ENG. APP.
TOLERANCES		SCALE: FULL				
DEC. DIM. \pm FRAC. DIM. \pm ANGULAR DIM. \pm						
MAXIMUM ALLOWABLE TOLERANCES HAVE BEEN DETERMINED AND ANY DEVIATIONS WILL BE CAUSE FOR REJECTION. REMOVE ALL BURRS AND SHARP EDGES						

REQ. ITEM	PART NO.	DESCRIPTION	SYMBOL
	.064	THE TECHNICAL MATERIEL CORP. MAMARONECK, NEW YORK	
	ALUMINUM	RIGHT SIDE PLATE	
	5052-H32		
	TYPE & TEMPER		
1	CLL-1	4-13-60	
REQ PER UNIT	MODEL	SECTION	ASSY. NO.
			DATE
			HEAT TREAT SPEC.
			3404-YEL. IRIDITE
			FINISH & SPEC. NO.
			MS-2217