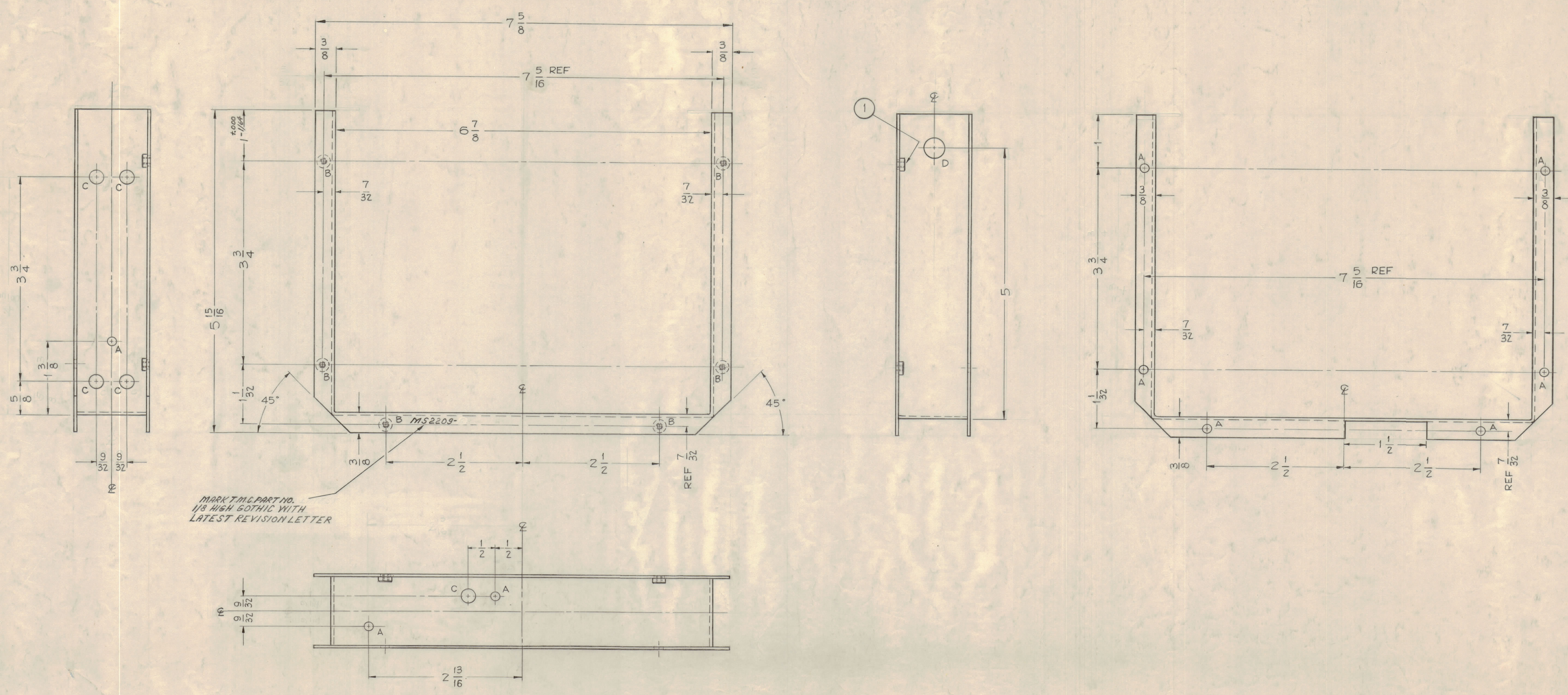


NOTICE TO PERSONS RECEIVING THIS DRAWING

THE TECHNICAL MATERIEL CORPORATION claims proprietary right in the material disclosed herein. This drawing is issued in confidence for engineering information only and may not be reproduced or used to manufacture anything shown hereon without permission from THE TECHNICAL MATERIEL CORPORATION to the user. This drawing is loaned for mutual assistance and is subject to recall at any time.

Property of:
THE TECHNICAL MATERIEL CORPORATION
MAMARONECK, NEW YORK

- HOLES~**
- A ~ 5/32 (.156) DIA. 9 REQ.
 - B ~ .161 MIN., .164 MAX. DIA.'S 6 REQ.
FOR NT129-440-3
 - C ~ 1/4 (.250) DIA. 5 REQ.
 - D ~ 3/8 (.375) DIA. 1 REQ.



MS 2209 A

ISSUE NO.	DESCRIPTION	DATE	CH. NO.	DRAFTS	CHECKER	ENG. APP.
A	ADDED 5° ON 8 HOLES, THIS PT. NO. ADDED	3-17-67	1985	LAK		

TOLERANCES: SCALE: FULL - DO NOT SCALE

DEC. DIM. ± 1/64
FRAC. DIM. ± 1/64
ANGULAR DIM. ±

MAXIMUM ALLOWABLE TOLERANCES HAVE BEEN DETERMINED AND ANY DEVIATIONS WILL BE CAUSE FOR REJECTION. REMOVE ALL BURRS AND SHARP EDGES

REQ. PER UNIT	MODEL	SECTION	ASSY. NO.	DATE	USED ON
1	CLL-1			4-26-60	

REF. LD-751(4)	REG. ITEM	PART NO.	DESCRIPTION	SYMBOL
6	1	NT129-440-3	NUT, ROUND, SWAGE TYPE	
		.051		
		ALUMINUM	WRAPAROUND, FRAME	
		5052 - H - 32		

THE TECHNICAL MATERIEL CORP.
MAMARONECK, NEW YORK

John C. Biele
DRAWN
ELEC. DES. APP. J.C.B.
MECH. DES. APP.
CHECKED
FINAL APPROVAL
MS 2209 A