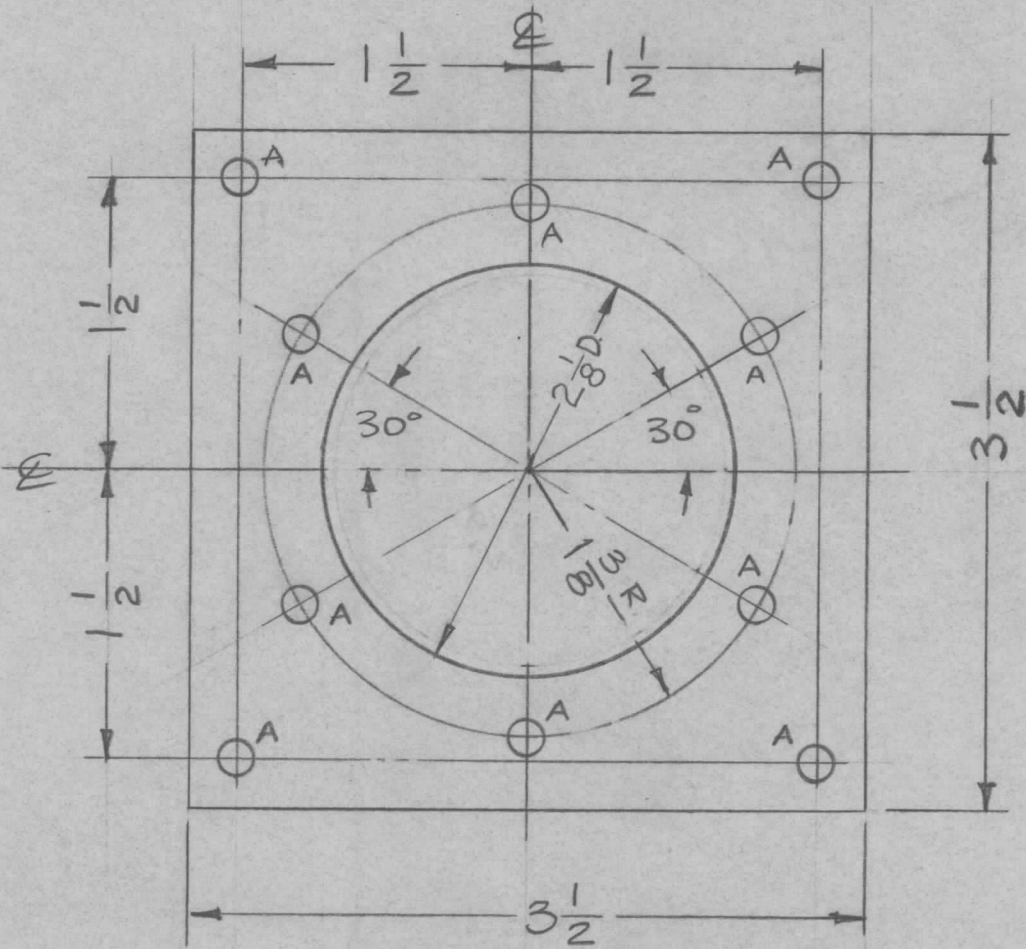


A- $\frac{13}{64}$ (.203)D. - 10 Req.

| | | | | |
|---------------|-------------|------------|---------|---|
| REQ. PER UNIT | USED ON | | MS-2108 | A |
| | MODEL | ASS'Y. NO. | | |
| 1 | AT-101(40K) | | 3-12-60 | |

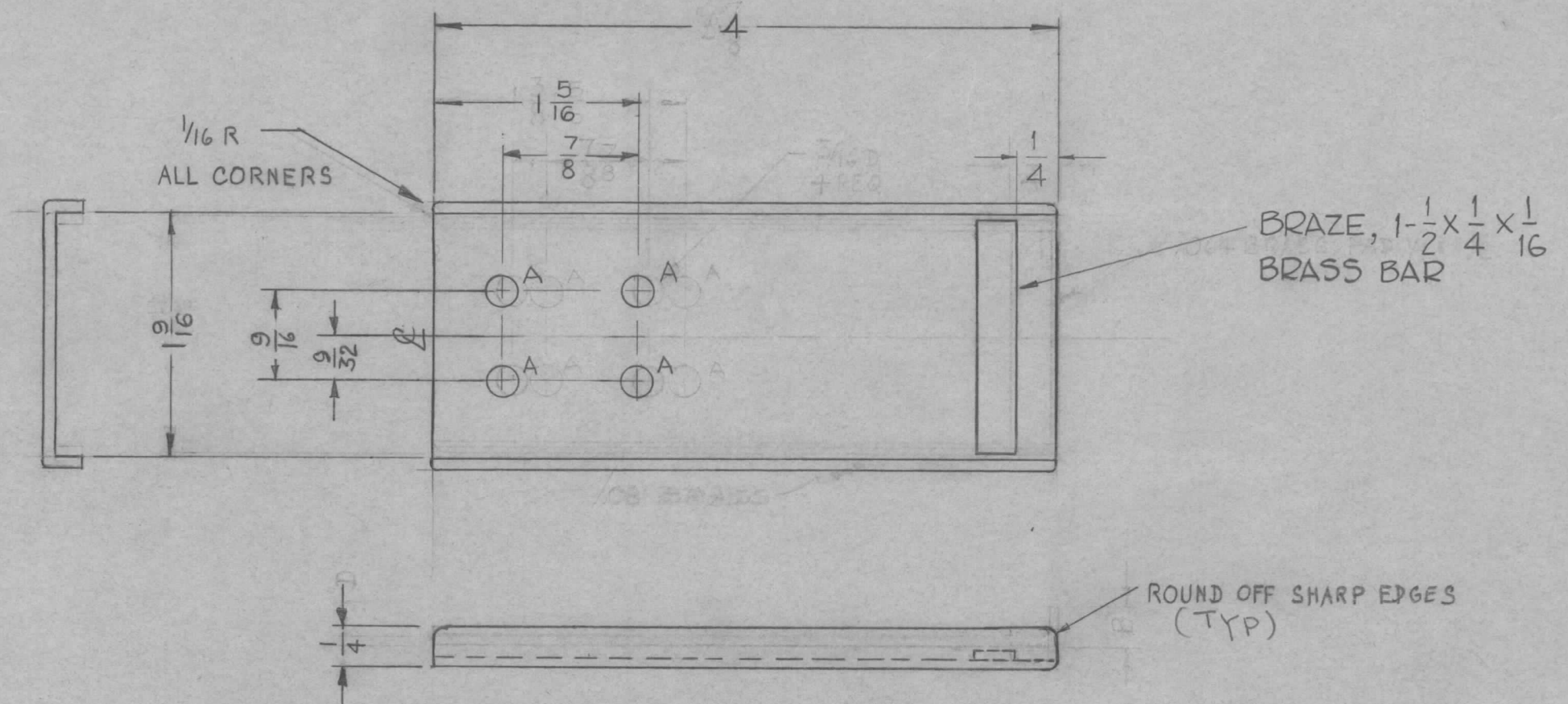


| ISSUE | ITEM | CHANGED FROM | DATE | CH. NO. | DRAFTS | CHECKER | ENG. APP. | REQ. | ITEM | PART NO. | DESCRIPTION | SYMBOL | |
|--|------|-------------------------|---|---------|--------|---------|-----------|-------------------------------|-------------------|------------------------|--|----------------|---|
| | | | | | | | | | | | THE TECHNICAL MATERIEL CORP. MAMARONECK, NEW YORK | | |
| | | | | | | | | | | | PLATE, CAPACITOR MTS. (ANTENNA TUNER) | | |
| A | 1 | 2 1/8" DIA. WAS 2" DIA. | 7/22/60 | 262C | cy | JHE | QB | | | | | | |
| TOLERANCES | | | SCALE: FULL | | | | | 5052-H32 | | 16 ³ /12/60 | JHE | QB | |
| DEC. DIM. ± FRAC. DIM. ± 1/64 ANGULAR DIM. ± | | | MAXIMUM ALLOWABLE TOLERANCES HAVE BEEN DETERMINED AND ANY DEVIATIONS WILL BE CAUSE FOR REJECTION. REMOVE ALL BURRS AND SHARP EDGES | | | | | TYPE & TEMPER 5404 Iridite | HEAT TREAT. SPEC. | DRAWN | CHECKED | FINAL APPROVAL | |
| | | | | | | | | FINISH & SPEC. NO. | | ELEC. DES. APP. | MECH. DES. APP. | MS-2108 | A |

| | | | | |
|-------------|-----|------|-----|------|
| TYP PART NO | REV | DATE | BY | CHKD |
| MATERIAL | 3/8 | 1/4 | 1/2 | 1/2 |
| REV | 4 | 1/2 | 1/2 | 1/2 |

| | | | | | |
|---------------|---------|------------|---------|---------|---|
| REQ. PER UNIT | USED ON | | | MS-2111 | C |
| | MODEL | ASS'Y. NO. | DATE | | |
| 2 | GPT-40K | AX-209 | 3-14-60 | | |

A ~ 3/16 D. 4 REQ.



| | | | | | | | |
|---|---|--------------------------------------|---------|------|-----|-----|----|
| C | 1 | 1-1/2 x 1/4 x 1/16 Brass Bar Altered | 6-3-61 | 4992 | EQM | GCB | DB |
| B | 5 | REQ. UNIT WAS 1 | 6/16 | 2426 | GC | GCB | DB |
| | 4 | 1/4 DIM. #064 BRASS DELETED | | | | | |
| | 3 | 4" WAS 3 7/8 | | | | | |
| | 2 | 1 5/16 WAS 1 3/8 | 6/60 | | | | |
| | 1 | 1 9/16 WAS 1 1/16 | | | | | |
| A | 1 | PICTORIAL REVISED | 3-23-60 | | | | DB |

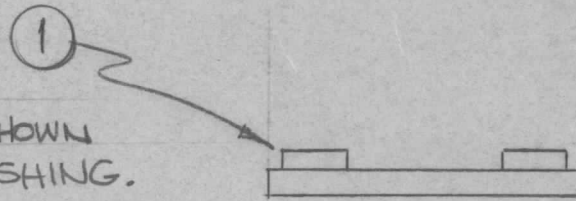
REF.-MATES W/MS-1980

| | | | | | | | |
|-------------------|------|--------------|---|---------|--------|---------|-----------|
| ISSUE | ITEM | CHANGED FROM | DATE | CH. NO. | DRAFTS | CHECKER | ENG. APP. |
| TOLERANCES | | | SCALE: | | | | |
| DEC. DIM. ± | | | MAXIMUM ALLOWABLE TOLERANCES HAVE BEEN DETERMINED AND ANY DEVIATIONS WILL BE CAUSE FOR REJECTION. | | | | |
| FRAC. DIM. ± 1/64 | | | REMOVE ALL BURRS AND SHARP EDGES | | | | |
| ANGULAR DIM. ± | | | | | | | |

| | | | | | | |
|--------------------|------|-------------------|------------------------------|---------|----------------|--------|
| REQ. | ITEM | PART NO. | DESCRIPTION | | | SYMBOL |
| | | | THE TECHNICAL MATERIEL CORP. | | | |
| | | | MAMARONECK, NEW YORK | | | |
| | | | LEAF TENSION | | | |
| | | | PA. BANDSWITCH WIPER | | | |
| TYPE & TEMPER | | HEAT TREAT. SPEC. | DRAWN | CHECKED | FINAL APPROVAL | |
| RHODIUM PL.000025 | | | | | MS-2111 | |
| FINISH & SPEC. NO. | | ELEC. DES. APP | MECH. DES. APP | | C | |

| | | | | | |
|---------------|--------------|------------|---------|---------|---|
| REQ. PER UNIT | USED ON | | | MS-2112 | A |
| | MODEL | ASS'Y. NO. | DATE | | |
| 1 | AT-101 (40K) | | 3-12-60 | | |

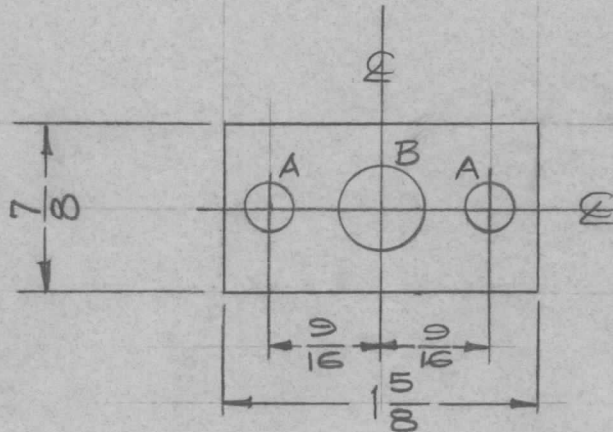
MOUNT IN "A"
HOLES AS SHOWN
AFTER FINISHING.



A - $\frac{.221}{.224}$ D.

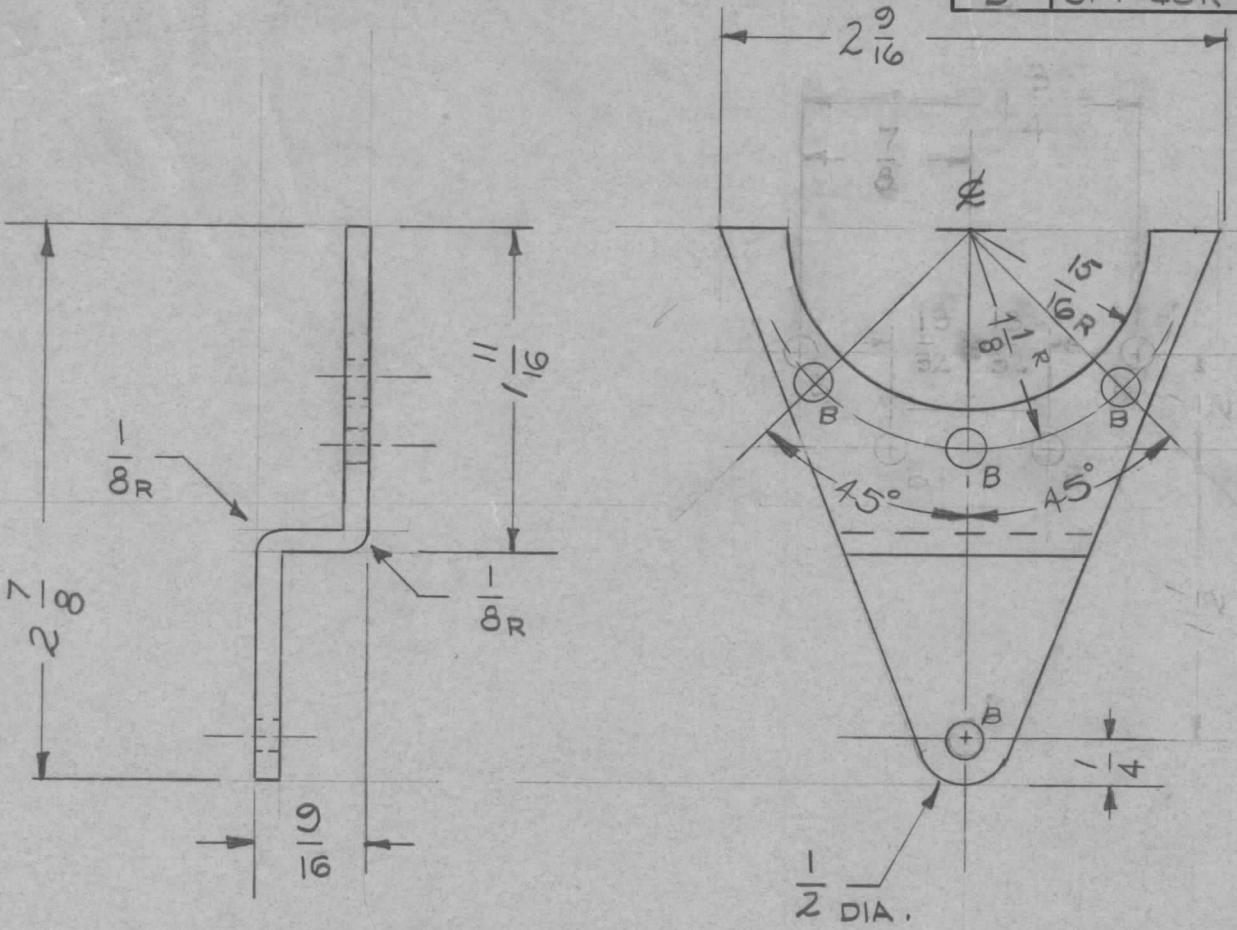
2 Req.

B - $\frac{7}{16}$ (.437) D. 1 Req.



| | | | | | | | | | | | | | | | | |
|-------------------|------|------------------|--|---------|--------|---------|-----------|--------------------|-------------------|------------------------------|--------------------|----------------|---------|---|--|--|
| | | | | | | | | 2 | 1 | NT129-832-6 | NUT, PLAIN, SPLINE | A | | | | |
| | | | | | | | | REQ. | ITEM | PART NO. | DESCRIPTION | SYMBOL | | | | |
| | | | | | | | | 1/8 THK | | THE TECHNICAL MATERIEL CORP. | | | | | | |
| | | | | | | | | STOCK SIZE | | MAMARONECK, NEW YORK | | | | | | |
| | | | | | | | | Aluminum | | PLATE, CAPACITOR SHAFT ADJ. | | | | | | |
| | | | | | | | | MATERIAL | | | | | | | | |
| A | | ADD IT. 1 TO B/M | 3-2-67 | 17879 | HGA | Q/S | 2/10 | 5052-H32 | | 16 3/4/60 | file | QB | | | | |
| ISSUE | ITEM | CHANGED FROM | DATE | CH. NO. | DRAFTS | CHECKER | ENG. APP. | TYPE & TEMPER | HEAT TREAT. SPEC. | DRAWN | CHECKED | FINAL APPROVAL | | | | |
| TOLERANCES | | | SCALE: FULL | | | | | 5404 Iridite | | | | | MS-2112 | A | | |
| DEC. DIM. ± | | | MAXIMUM ALLOWABLE TOLERANCES HAVE BEEN DETERMINED AND ANY DEVIATIONS WILL BE CAUSE FOR REJECTION. REMOVE ALL BURRS AND SHARP EDGES | | | | | FINISH & SPEC. NO. | | ELEC. DES. APP. | MECH. DES. APP. | | | | | |
| FRAC. DIM. ± 1/64 | | | | | | | | | | | | | | | | |
| ANGULAR DIM. ± | | | | | | | | | | | | | | | | |

| | | | | |
|---------------|---------|------------|---------|-----------|
| REQ. PER UNIT | USED ON | | | MS-2114 A |
| | MODEL | ASS'Y. NO. | DATE | |
| 3 | GPT-40K | | 3-14-60 | |



A - 11/64 (.717) D - 3/16
 B - 3/16 D (.156) D - 4"

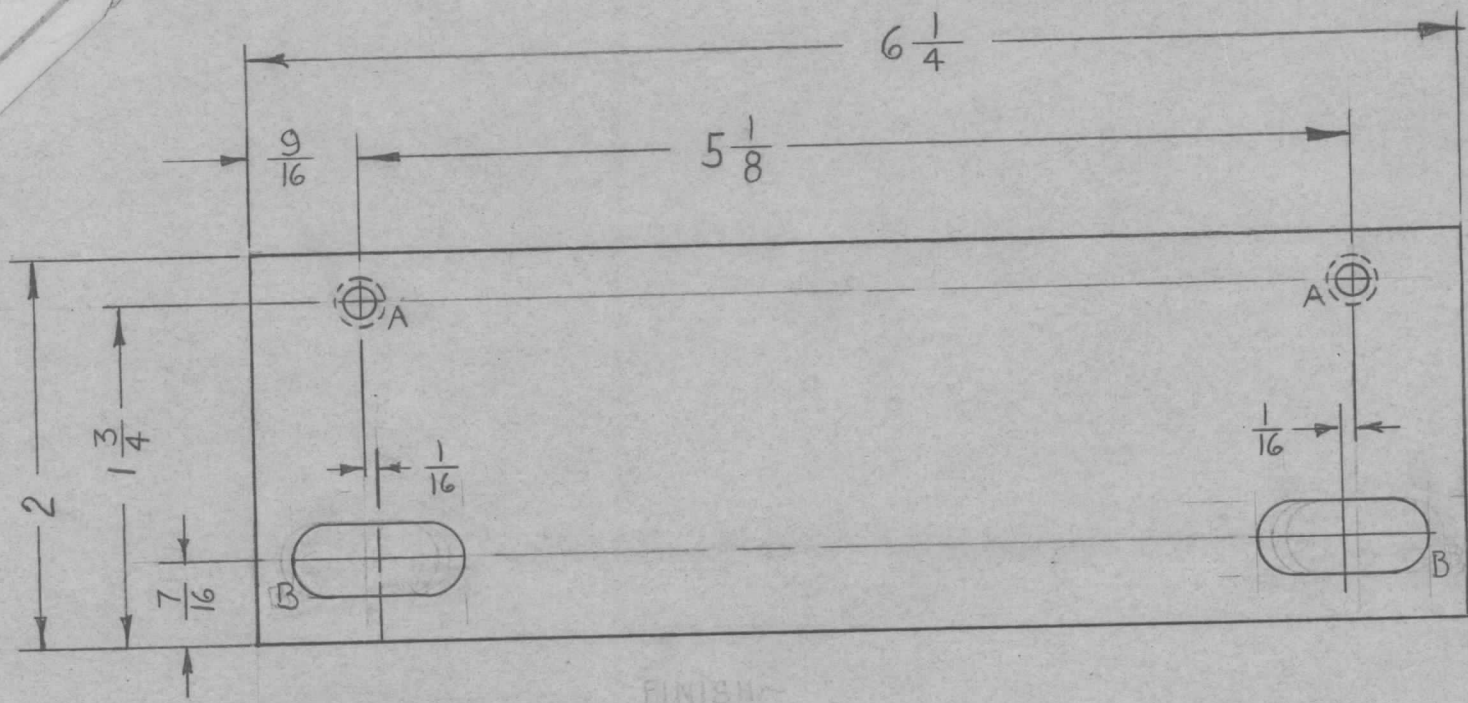
| ISSUE | ITEM | CHANGED FROM | DATE | CH. NO. | DRAFTS | CHECKER | ENG. APP. | REQ. ITEM | PART NO. | DESCRIPTION | SYMBOL | | | |
|-------------------|------|---------------------------|---|---------|--------|---------|-----------|--------------------|----------|--|----------------|---------|----------------|--|
| | | | | | | | | 1/8 | | THE TECHNICAL MATERIEL CORP. MAMARONECK, NEW YORK BRACKET, KNOB HANDLE | | | | |
| A | 4 | B HOLES DIA 3/16 WAS 5/32 | 8-11-60 | 2750 | Ru. | geb | JB | STOCK SIZE | | | | | | |
| | 3 | 4 B HOLES RELOCATED | | | | | | ALUMINUM | | | | | | |
| | 2 | 1 B HOLE WAS AN A HOLE | | | | | | MATERIAL | | | | | | |
| | 1 | 1 A Hole 11/64 D. Deleted | | | | | | 5052-H32 | | | | | | |
| TOLERANCES | | | SCALE: FULL | | | | | TYPE & TEMPER | | HEAT TREAT. SPEC. | DRAWN | CHECKED | FINAL APPROVAL | |
| DEC. DIM. ± | | | MAXIMUM ALLOWABLE TOLERANCES HAVE BEEN DETERMINED AND ANY DEVIATIONS WILL BE CAUSE FOR REJECTION: REMOVE ALL BURRS AND SHARP EDGES | | | | | BLACK, ANODIZED | | | | | MS-2114 A | |
| FRAC. DIM. ± 1/64 | | | | | | | | FINISH & SPEC. NO. | | ELEC. DES. APP | MECH. DES. APP | | | |
| ANGULAR DIM. ± | | | | | | | | | | | | | | |

B-316
V-DB & G-211K

2
2 REQ
2 "

| REQ. PER UNIT | USED ON | | |
|---------------|---------|------------|---------|
| | MODEL | ASS'Y. NO. | DATE |
| 2 | GPT-10K | AX-166 | 3-21-60 |

MS-2122 D

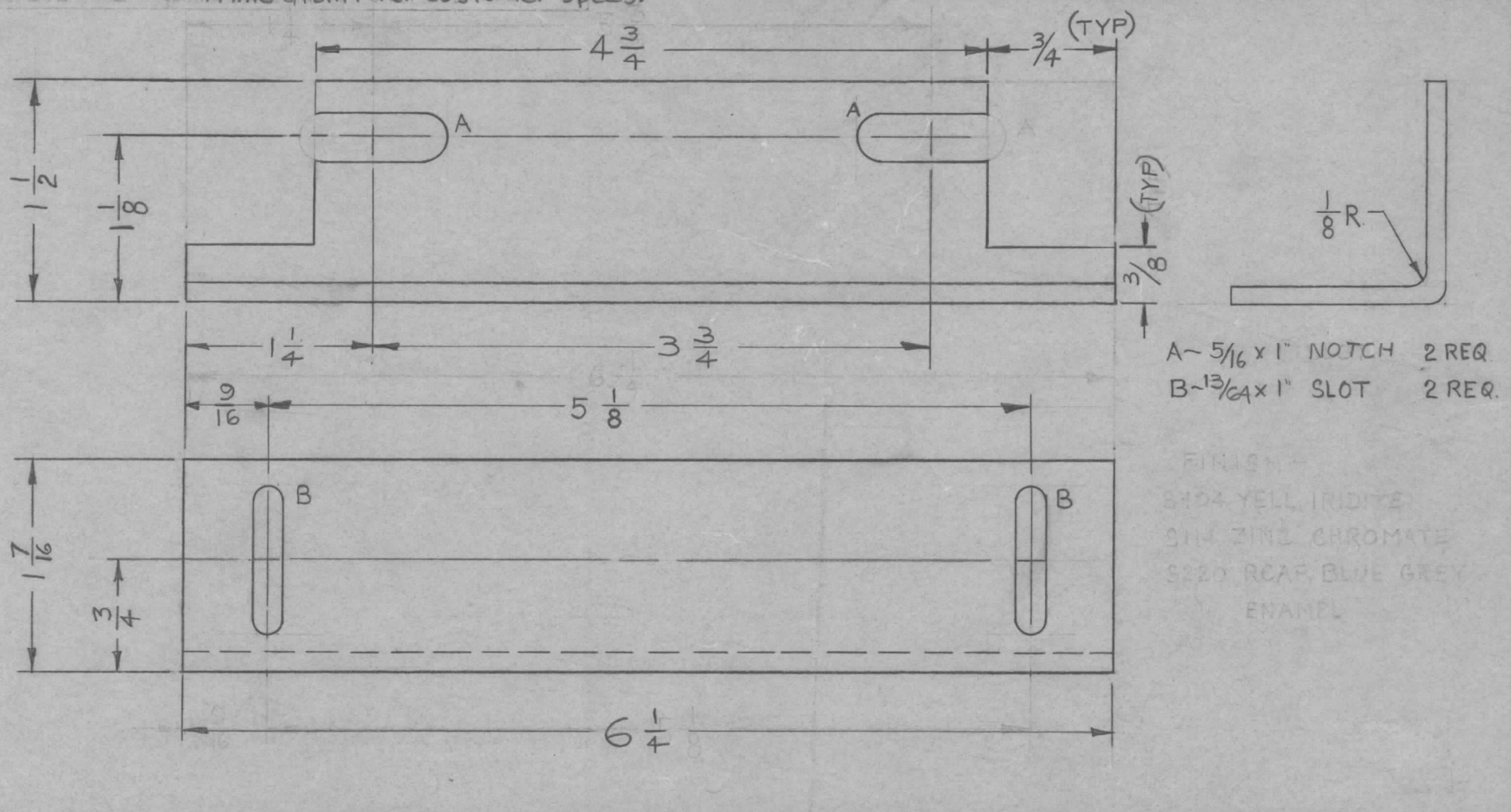


FINISH
YELL IRIDITE
ZINC CHROMATE
PRAF BLUE GREY ENAMEL

| TMC PART NO. | PRIME OR DIP | FINISH |
|--------------|-------------------------------------|---------------------------------------|
| MS-2122-1 | S114 ZINC CHROM. | S220 TMC RCAF BLUE GRAY SMOOTH ENAMEL |
| MS-2122-2 | OR PRIME & PAINT TO CUSTOMERS SPEC. | |

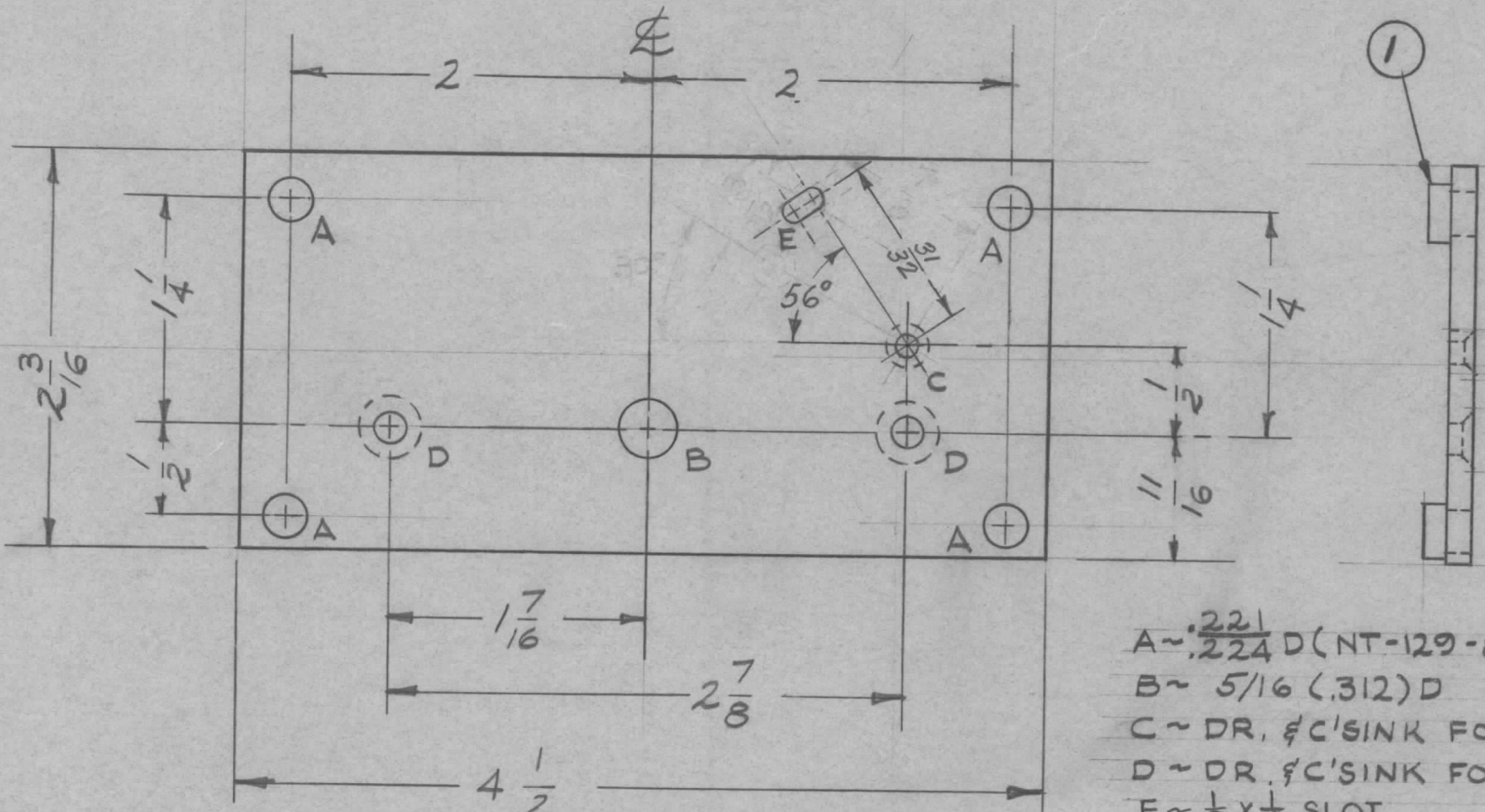
| ISSUE | ITEM | CHANGED FROM | DATE | CH. NO. | DRAFTS | CHECKER | ENG. APP. | REQ. ITEM | PART NO. | DESCRIPTION | SYMBOL | |
|-------------------|------|------------------------|--|---------|--------|---------|-----------|-----------|----------------|---|----------------|--|
| D | 1 | MATERIAL WAS ALUMINUM | 2/13/61 | 4156 | RU | HQE | DB | | | THE TECHNICAL MATERIEL CORP. MAMARONECK, NEW YORK PLATE, DOOR LATCH BOTTOM, FRONT & REAR | D | |
| C | 1 | CHART CLARIFIED | 6/13/60 | 2447 | CS | PCB | DB | 1/8 | | | | |
| B | 1 | CHART ADDED | 5-13-60 | 2251 | CS | PCB | DB | STEEL | | | | |
| A | 1 | "B" HOLE WAS 3/8 x 3/4 | 4-4-60 | 1977 | MB | HQE | MC | | | | | |
| TOLERANCES | | | SCALE: | | | | C.R. | | DRAWN | | FINAL APPROVAL | |
| DEC. DIM. ± | | | MAXIMUM ALLOWABLE TOLERANCES HAVE BEEN DETERMINED AND ANY DEVIATIONS WILL BE CAUSE FOR REJECTION: REMOVE ALL BURRS AND SHARP EDGES | | | | SEE NOTE | | CHECKED | | MS-2122 | |
| FRAC. DIM. ± 1/64 | | | | | | | | | ELEC. DES. APP | | MECH. DES. APP | |
| ANGULAR DIM. ± | | | | | | | | | | | | |

| | | | | | | | | |
|--------------|--------------------------------------|---------------------------------------|---------------|---------|------------|---------|---------|---|
| TMC PART NO. | PRIME OR DIP | FINISH | REQ. PER UNIT | USED ON | | | MS-2123 | D |
| MS-2123-1 | S114 ZINC CHROM | S220 TMC RCAP BLUE GRAY SMOOTH ENAMEL | 2 | MODEL | ASS'Y. NO. | DATE | | |
| MS-2123-2 | or Prime & Paint Per Customer Specs. | | | GPT-10K | AX-166 | 3-21-60 | | |



| | | | | | | | | | | | |
|-------------------|------|---|--|---------|--------|---------------|-----------|-------------------|----------|--|--------|
| D | 1 | "B" SLOT WAS 3/16 x 1 | 5-20-63 | 9060 | PH | JMB | REQ. | ITEM | PART NO. | DESCRIPTION | SYMBOL |
| C | 1 | DRG. MODIFIED | 10/18/60 | 3212 | PH | JMB | 11GA | | | THE TECHNICAL MATERIEL CORP. MAMARONECK, NEW YORK | |
| B | 1 | Delete 152 -2 was unger finish added cust. specs. | 5-25-60 | 2373 | PH | JMB | STEEL | | | BRACKET, MTG. DOOR LATCH BOTTOM, FRONT & REAR | |
| A | 1 | CHART ADDED | 5-13-60 | 2251 | CY | JMB | MATERIAL | | | | |
| ISSUE | ITEM | CHANGED FROM | DATE | CH. NO. | DRAFTS | CHECKER | ENG. APP. | 5082-1132 | | M.F. J.H. J.M. DRAWN CHECKED FINAL APPROVAL | |
| TOLERANCES | | | SCALE: | | | TYPE & TEMPER | | HEAT TREAT. SPEC. | | FINISH & SPEC. NO. | |
| DEC. DIM. ± | | | MAXIMUM ALLOWABLE TOLERANCES HAVE BEEN DETERMINED AND ANY DEVIATIONS WILL BE CAUSE FOR REJECTION. REMOVE ALL BURRS AND SHARP EDGES | | | SEE NOTE | | | | MS-2123 | |
| FRAC. DIM. ± 1/64 | | | | | | | | | | D | |
| ANGULAR DIM. ± | | | | | | | | | | | |

| | | | | |
|---------------|---------|------------|---------|-----------|
| REQ. PER UNIT | USED ON | | | MS-2124 A |
| | MODEL | ASS'Y. NO. | DATE | |
| 1 | AT-101 | GPT-40K | 3-15-60 | |



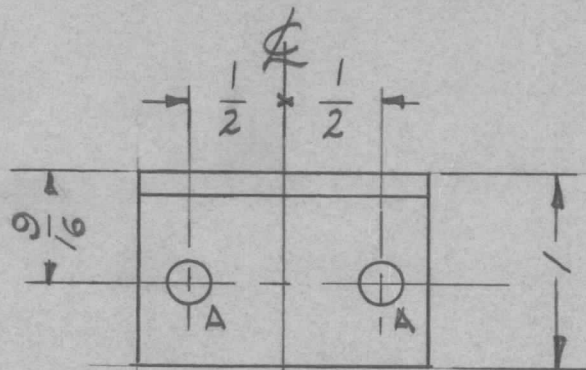
- A ~ $\frac{221}{224} D$ (NT-129-832-6) 4
- B ~ $5/16$ (.312) D 1
- C ~ DR. ϕ C'SINK FOR 4-40 FHS 1
- D ~ DR. ϕ C'SINK FOR 8-32 FHS 2
- E ~ $1/8 \times 1/4$ SLOT 1

REF: LD 723(1)

| | | | | |
|--------------------|------------|-------------------|------------------------------|---------|
| 4 | 1 | NT-129-832-6 | NUT, ROUND | |
| REQ. ITEM | PART NO. | | DESCRIPTION | SYMBOL |
| | 1/8 TH'K. | | THE TECHNICAL MATERIEL CORP. | |
| | STOCK SIZE | | MAMARONECK, NEW YORK | |
| A | ALUMINUM | | PLATE, DETENT MOUNTING | |
| MATERIAL | | 5052-H32 | | |
| TYPE & TEMPER | | HEAT TREAT. SPEC. | DRAWN | CHECKED |
| 5404 ~ IRIDITE | | | LG | |
| FINISH & SPEC. NO. | | ELEC. DES. APP | MECH. DES. APP | |
| | | | MS-2124 A | |

| | | | | | | | |
|----------------|------|------------------------------------|--|---------|--------|---------|-----------|
| ISSUE | ITEM | CHANGED FROM | DATE | CH. NO. | DRAFTS | CHECKER | ENG. APP. |
| A | 1 | SLOT "E" ADDED, REPLACES 1/8" HOLE | 3-8-63 | 8478 | RZ | JLB | JLB |
| TOLERANCES | | | SCALE: FULL | | | | |
| DEC. DIM. ± | | | MAXIMUM ALLOWABLE TOLERANCES HAVE BEEN DETERMINED AND ANY DEVIATIONS WILL BE CAUSE FOR REJECTION. REMOVE ALL BURRS AND SHARP EDGES | | | | |
| FRAC. DIM. ± | | | | | | | |
| ANGULAR DIM. ± | | | 1/64 | | | | |

| | | | | |
|---------------|---------|------------|---------|---------|
| REQ. PER UNIT | USED ON | | | MS-2126 |
| | MODEL | ASS'Y. NO. | DATE | |
| 1 | AT-101 | GPT-40K | 3-16-60 | |

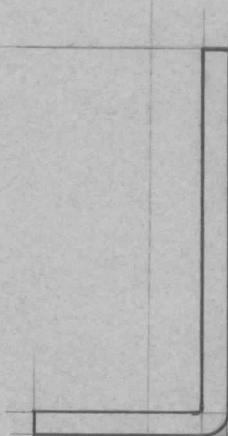
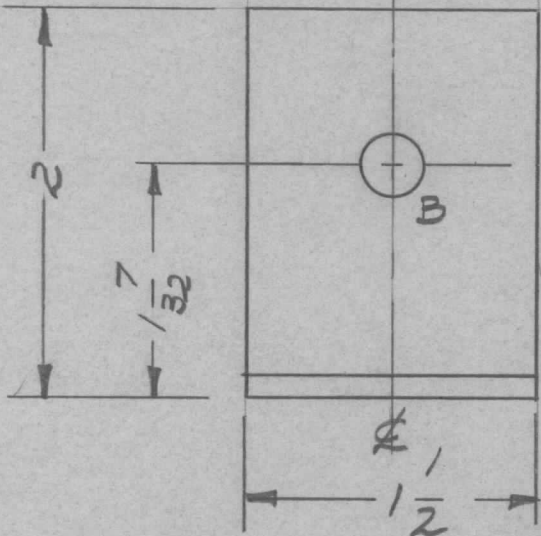


A ~ 7/32 (.218) D.

2 REQ

B ~ 5/16 (.312) D

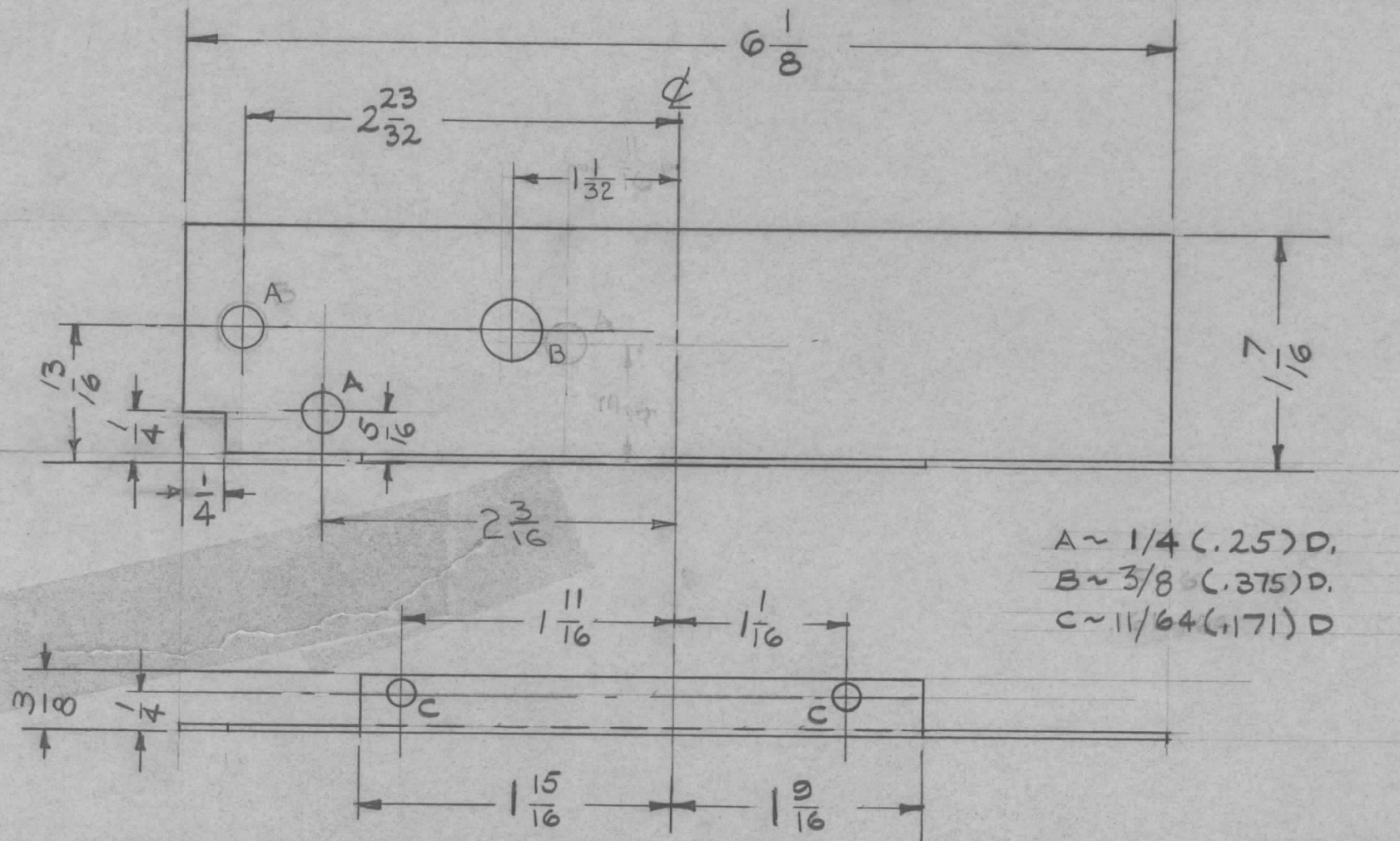
1 "



| ISSUE | ITEM | CHANGED FROM | DATE | CH. NO. | DRAFTS | CHECKER | ENG. APP. | REQ. ITEM | PART NO. | DESCRIPTION | SYMBOL | |
|----------------|------|--------------|-------------|---------|--------|---------|-----------|--|--------------------|--|-----------------|--|
| | | | | | | | | | 1/8 TH'K | THE TECHNICAL MATERIEL CORP. MAMARONECK, NEW YORK BRACKET, SWITCH SHAFT (ANTENNA TUNER) | | |
| | | | | | | | | | STOCK SIZE | | | |
| | | | | | | | | | ALUMINUM | | | |
| | | | | | | | | | MATERIAL | | | |
| | | | | | | | | 5052-H32 | | TORILLO <i>file</i> | <i>DR</i> | |
| | | | | | | | | | | DRAWN | CHECKED | |
| | | | | | | | | | 6404-YEL. IRIDITE | | | |
| | | | | | | | | | FINISH & SPEC. NO. | ELEC. DES. APP. | MECH. DES. APP. | |
| TOLERANCES | | | SCALE: FULL | | | | | MAXIMUM ALLOWABLE TOLERANCES HAVE BEEN DETERMINED AND ANY DEVIATIONS WILL BE CAUSE FOR REJECTION: REMOVE ALL BURRS AND SHARP EDGES | | | | |
| DEC. DIM. ± | | | | | | | | | | | | |
| FRAC. DIM. ± | | | | | | | | | | | | |
| ANGULAR DIM. ± | | | | | | | | | | | | |
| | | | | | | | | MS-2126 | | | | |

| | | | |
|---------------|---------|------------|---------|
| REQ. PER UNIT | USED ON | | |
| | MODEL | ASS'Y. NO. | DATE |
| 1 | CMO | | 3-21-60 |

MS-2148

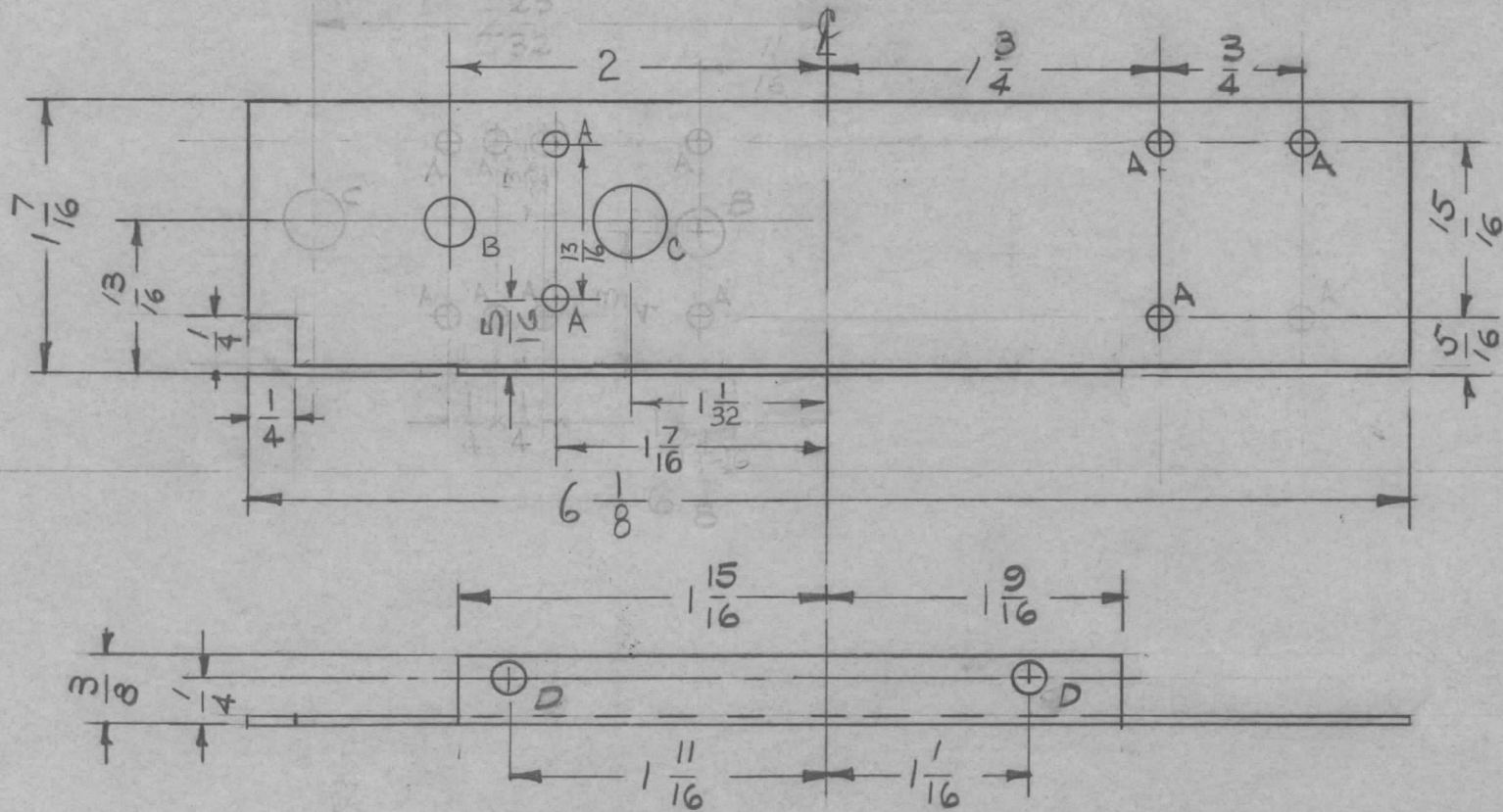


A ~ $1/4 (.25) D$, 2
 B ~ $3/8 (.375) D$, 1
 C ~ $11/64 (.171) D$, 2

REF: LD-817 (1)

| REQ. | ITEM | PART NO. | DESCRIPTION | | SYMBOL | | | | |
|--------------------|--------|-------------------|--|----------------|---------|---------|----------------|--|--|
| | | .051 | THE TECHNICAL MATERIEL CORP. | | | | | | |
| | | STOCK SIZE | MAMARONECK, NEW YORK | | | | | | |
| | | ALUMINUM | SHIELD # 1 | | | | | | |
| | | MATERIAL | | | | | | | |
| ISSUE | ITEM | CHANGED FROM | DATE | CH. NO. | DRAFTS | CHECKER | ENG. APP. | | |
| TOLERANCES | | | SCALE: FULL | | | | | | |
| DEC. DIM. ± | | | MAXIMUM ALLOWABLE TOLERANCES HAVE BEEN DETERMINED AND ANY DEVIATIONS WILL BE CAUSE FOR REJECTION. REMOVE ALL BURRS AND SHARP EDGES | | | | | | |
| FRAC. DIM. ± | $1/64$ | | | | | | | | |
| ANGULAR DIM. ± | | | | | | | | | |
| 5052-H32 | | HEAT TREAT. SPEC. | DRAWN | | CHECKED | | FINAL APPROVAL | | |
| S404 YEL. IRIDITE | | | | | | | MS-2148 | | |
| FINISH & SPEC. NO. | | ELEC. DES. APP | | MECH. DES. APP | | | | | |

| | | | | | |
|---------------|---------|-----------|---------|---------|---|
| REQ. PER UNIT | USED ON | | | MS-2149 | B |
| | MODEL | ASSY. NO. | DATE | | |
| 1 | CMO-1 | | 3-21-60 | | |

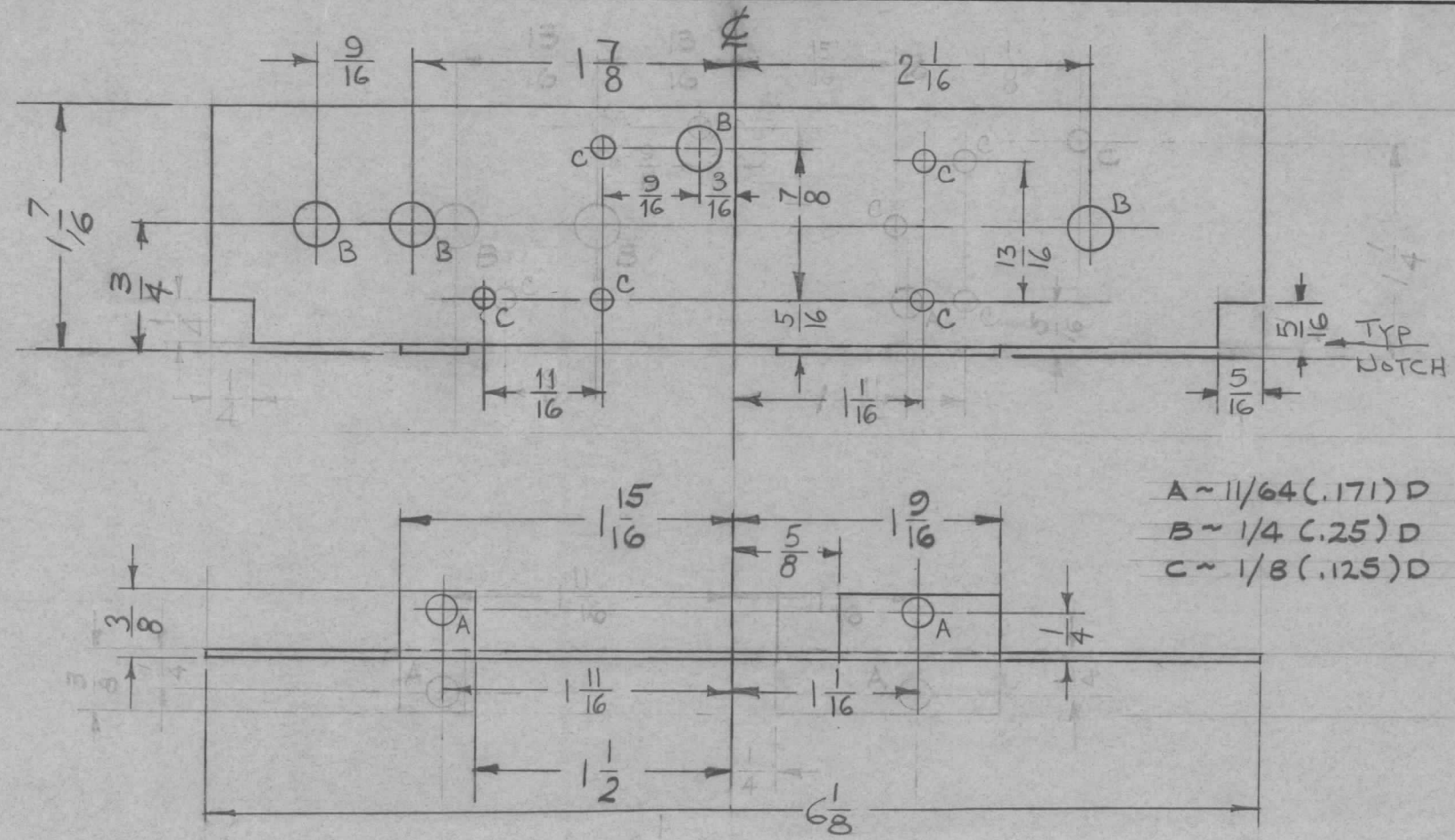


- A ~ 1/8 (.125) D 5
- B ~ 1/4 (.25) D 1
- C ~ 3/8 (.375) D 1
- D ~ 1/64 (.171) D 2

REF: LD-818(1)

| ISSUE | ITEM | CHANGED FROM | DATE | CH. NO. | DRAFTS | CHECKER | ENG. APP. | REQ. ITEM | PART NO. | DESCRIPTION | SYMBOL | |
|-------------------|------|-----------------|--|---------|--------|-------------|-------------|--------------------|-------------------|---|-------------|----------------|
| | | | | | | | | .051 | | THE TECHNICAL MATERIEL CORP. MAMARONECK, NEW YORK SHIELD #2 | | |
| B | 1 | S/16 DIM. ADDED | 9-23-60 | 3075 | cy | [Signature] | [Signature] | STOCK SIZE | | | | |
| A | 1 | CLARIFIED DW.G. | 5-23-60 | 2319 | rd | [Signature] | [Signature] | ALUMINUM | | | | |
| TOLERANCES | | | | | | | | MATERIAL | | | | |
| DEC. DIM. ± | | | SCALE: | | | | | 5052-H32 | H32 | DRILLED | [Signature] | [Signature] |
| FRAG. DIM. ± 1/64 | | | MAXIMUM ALLOWABLE TOLERANCES HAVE BEEN DETERMINED AND ANY DEVIATIONS WILL BE CAUSE FOR REJECTION. REMOVE ALL BURRS AND SHARP EDGES | | | | | TYPE & TEMPER | HEAT TREAT. SPEC. | DRAWN | CHECKED | FINAL APPROVAL |
| ANGULAR DIM. ± | | | | | | | | 5404~YEL. IRIDITE | | | [Signature] | [Signature] |
| | | | | | | | | FINISH & SPEC. NO. | ELEC. DES. APP. | MECH. DES. APP. | | |

| | | | | | |
|---------------|---------|------------|---------|---------|---|
| REQ. PER UNIT | USED ON | | | MS-2150 | E |
| | MODEL | ASS'Y. NO. | DATE | | |
| 1 | CMO-12 | | 3-22-60 | | |



- A ~ 11/64 (.171) D 2
- B ~ 1/4 (.25) D 4
- C ~ 1/8 (.125) D 5

| | | | | | | | |
|----------------|------|------------------------|--|---------|--------|---------|-----------|
| E | 1 | NOTCHES WERE 1/4 X 1/4 | 2-16-66 | 15780 | MRB | JCS | |
| D | 1 | (1) "C" HOLE RELOCATED | 5-8-61 | 4827 | MG.F. | JCS | |
| C | 3 | ONE "B" HOLE ADDED | 12-14-60 | 3727 | MG.F. | JCS | |
| | 2 | ONE "C" HOLE DELETED | | | | | |
| B | 1 | 7/8 DIM. WAS 1" | 10/4/60 | 3130 | DM | JCS | |
| | 1 | 1/4" CUTOUT ADDED | | | | | |
| A | 3 | ONE "C" HOLE DELETED | 5-23-60 | 2318 | MG.F. | JCS | |
| | 2 | LIPS REVERSED | | | | | |
| | 1 | 1 1/16 WAS 1 1/32 | | | | | |
| ISSUE | ITEM | CHANGED FROM | DATE | CH. NO. | DRAFTS | CHECKER | ENG. APP. |
| TOLERANCES | | | SCALE: FULL | | | | |
| DEC. DIM. ± | | | MAXIMUM ALLOWABLE TOLERANCES HAVE BEEN DETERMINED AND ANY DEVIATIONS WILL BE CAUSE FOR REJECTION: REMOVE ALL BURRS AND SHARP EDGES | | | | |
| FRAC. DIM. ± | | | | | | | |
| ANGULAR DIM. ± | | | | | | | |

REF: LD-819-(1)

| REQ. | ITEM | PART NO. | DESCRIPTION | SYMBOL |
|------|--------------------|-------------------|------------------------------|---------|
| | | .051 | THE TECHNICAL MATERIEL CORP. | |
| | | STOCK SIZE | MAMARONECK, NEW YORK | |
| | | ALUMINUM | SHIELD - 3 | |
| | | MATERIAL | | |
| | 5052-H32 | H32 | | |
| | TYPE & TEMPER | HEAT TREAT. SPEC. | DRAWN | CHECKED |
| | 6404 YEL. IRIDITE | | | |
| | FINISH & SPEC. NO. | ELEC. DES. APP | MECH. DES. APP | |

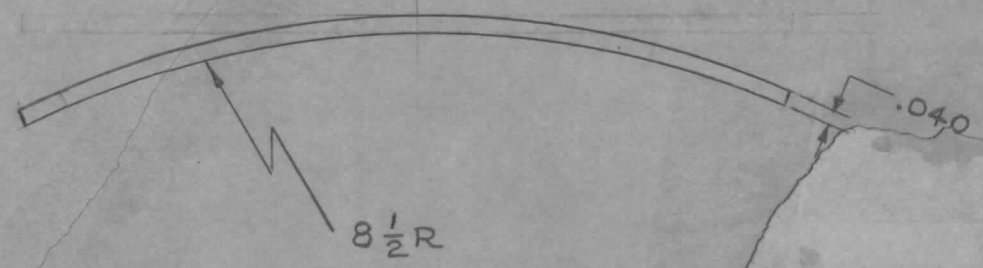
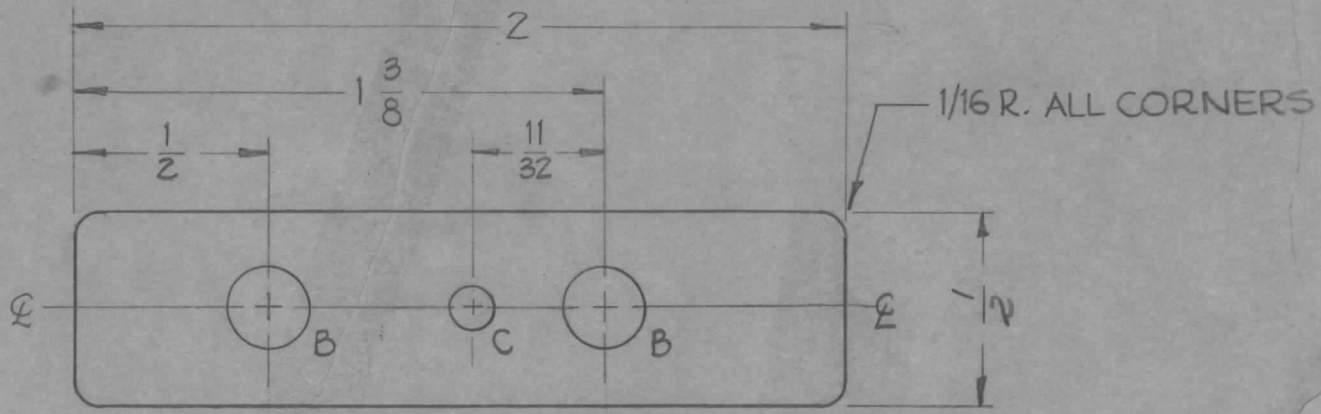
MS-2150 E

| REQ. PER UNIT | USED ON | | |
|---------------|---------|------------|----------|
| | MODEL | ASS'Y. NO. | DATE |
| 12 | GPT-10K | AS-10Z | 3-28-60 |
| 28 | GPT-40K | AX-209 | 6-10-60 |
| 6 | GPT-40K | AX-215 | 10-14-60 |

MS-2154 B

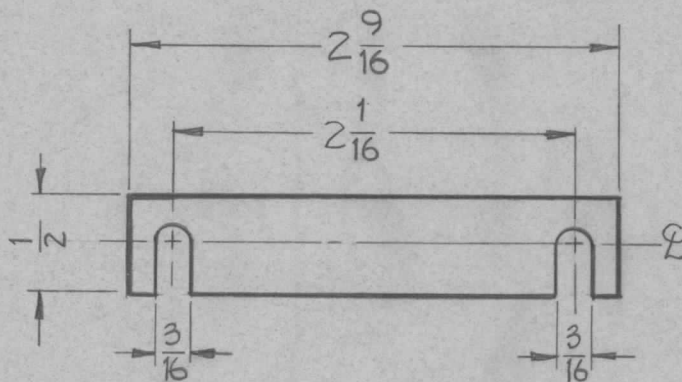
SPARE PARTS ONLY

HOLES
 B ~ .203 DIA. 2
 C ~ .109 " 1



| | | | | | | | | REQ. ITEM | PART NO. | DESCRIPTION | SYMBOL |
|-------------------|---|-------------------------------|--|---------|--------|---------|-----------|--------------------------------|----------|--|--------|
| | | | | | | | | .040 THK | | THE TECHNICAL MATERIEL CORP. MAMARONECK, NEW YORK SPRING, PRESSURE | |
| | | | | | | | | STOCK SIZE | | | |
| | | | | | | | | BERYLLIUM COPPER | | | |
| | | | | | | | | MATERIAL | | | |
| | | | | | | | | SPRING TEMPER | | DRAWN | |
| | | | | | | | | TYPE & TEMPER HEATTREAT. SPEC. | | CHECKED | |
| | | | | | | | | .0005 SILVER PLATE | | FINAL APPROVAL | |
| | | | | | | | | .000025 RHODIUM PLATE | | | |
| | | | | | | | | FINISH & SPEC. NO. | | ELEC. DES. APP. MECH. DES. APP. | |
| B | 1 | 8 1/2 R WAS FLAT CONSTRUCTION | 6-10-60 | 2446 | CY | JCB | 28 | | | | |
| A | 1 | 1/2 WAS 2 | 6-2-60 | 2390 | P | | | | | | |
| ISSUE ITEM | | CHANGED FROM | DATE | CH. NO. | DRAFTS | CHECKER | ENG. APP. | | | | |
| TOLERANCES | | | SCALE: DOUBLE SIZE | | | | | | | | |
| DEC. DIM. ± .005 | | | MAXIMUM ALLOWABLE TOLERANCES HAVE BEEN DETERMINED AND ANY DEVIATIONS WILL BE CAUSE FOR REJECTION. REMOVE ALL BURRS AND SHARP EDGES | | | | | | | | |
| FRAC. DIM. ± 1/64 | | | | | | | | | | | |
| ANGULAR DIM. ± | | | | | | | | | | | |
| | | | | | | | | MS-2154 | | B | |

| | | | |
|---------------------|---------|------------|---------|
| REQ. PER UNIT | USED ON | | MS-2155 |
| | MODEL | ASS'Y. NO. | |
| | | | 3-28-60 |



UNLESS OTHERWISE SPECIFIED
DIMENSIONS ARE IN INCHES AND INCLUDE
CHEMICALLY APPLIED OR PLATED FINISHES

| | |
|-------------|-----------|
| DECIMALS | FRACTIONS |
| .X ± .05 | ± 1/64 |
| .XX ± .01 | ANGLES |
| .XXX ± .005 | ± 0° 30' |

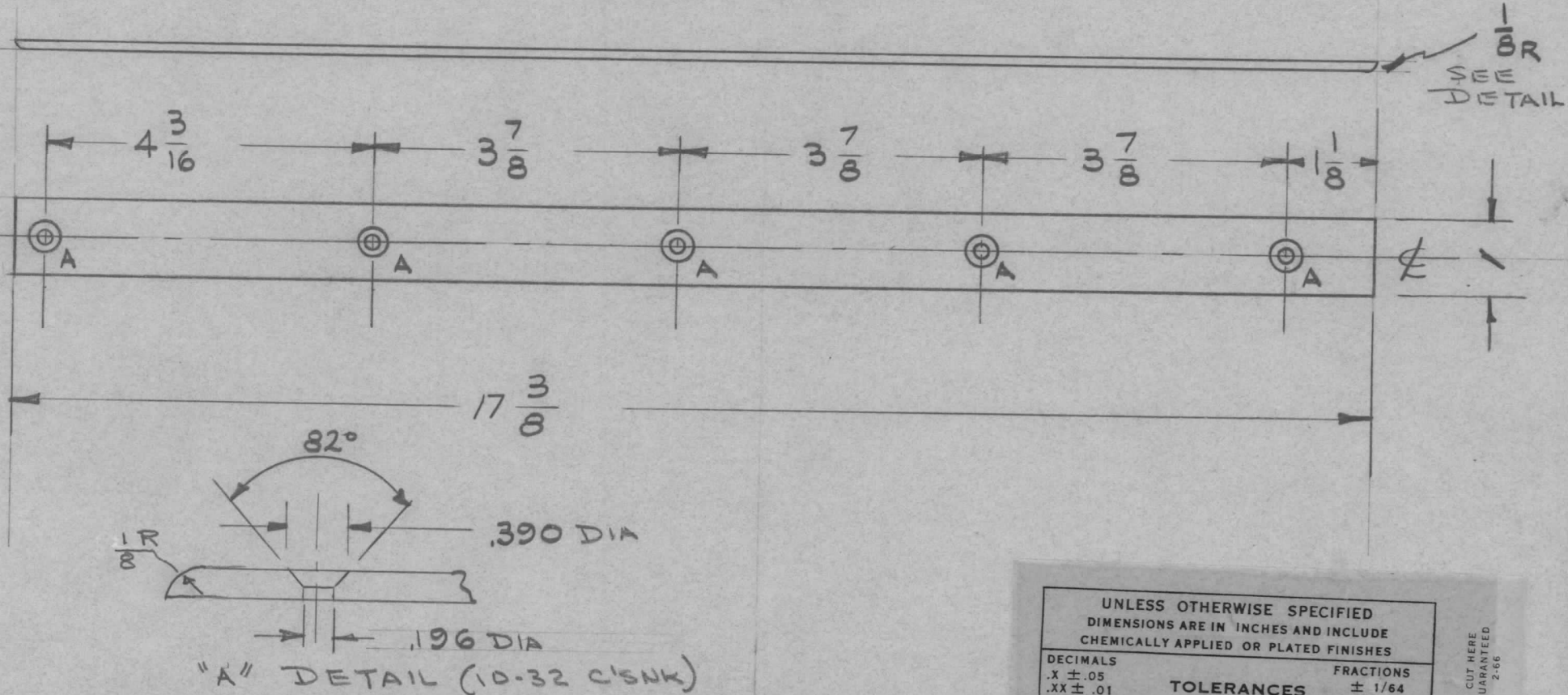
TOLERANCES

CUT HERE
GUARANTEED
2-66

REF-TF-219(1)

| ISSUE | ITEM | CHANGED FROM | DATE | CH. NO. | DRAFTS | CHECKER | ENG. APP. | REQ. ITEM | PART NO. | DESCRIPTION | SYMBOL | |
|----------------|------|--------------|--|---------|--------|---------|-----------|--------------------|------------------|--|-----------------|----------------|
| | | | | | | | | | .064 | THE TECHNICAL MATERIEL CORP. MAMARONECK, NEW YORK | SPACER, PLATE | |
| | | | | | | | | | STOCK SIZE | | | |
| | | | | | | | | | ALUMINUM | | | |
| | | | | | | | | | MATERIAL | | | |
| | | | | | | | | | 5052-H32 | <i>D.J. Mar</i> <i>J. De</i> <i>Am</i> | | |
| TOLERANCES | | | SCALE: | | | | | TYPE & TEMPER | HEATTREAT. SPEC. | DRAWN | CHECKED | FINAL APPROVAL |
| DEC. DIM. ± | | | MAXIMUM ALLOWABLE TOLERANCES HAVE BEEN DETERMINED AND ANY DEVIATIONS WILL BE CAUSE FOR REJECTION. REMOVE ALL BURRS AND SHARP EDGES | | | | | S-404 IRIDITE | | | | MS-2155 |
| FRAC. DIM. ± | | | | | | | | FINISH & SPEC. NO. | | ELEC. DES. APP. | MECH. DES. APP. | |
| ANGULAR DIM. ± | | | | | | | | | | | | |

| | | | | |
|---------------|---------|------------|---------|---------|
| REQ. PER UNIT | USED ON | | | MS-2156 |
| | MODEL | ASS'Y. NO. | DATE | |
| 1 | AT-101 | GPT-40K | 3-23-60 | |



UNLESS OTHERWISE SPECIFIED
DIMENSIONS ARE IN INCHES AND INCLUDE
CHEMICALLY APPLIED OR PLATED FINISHES

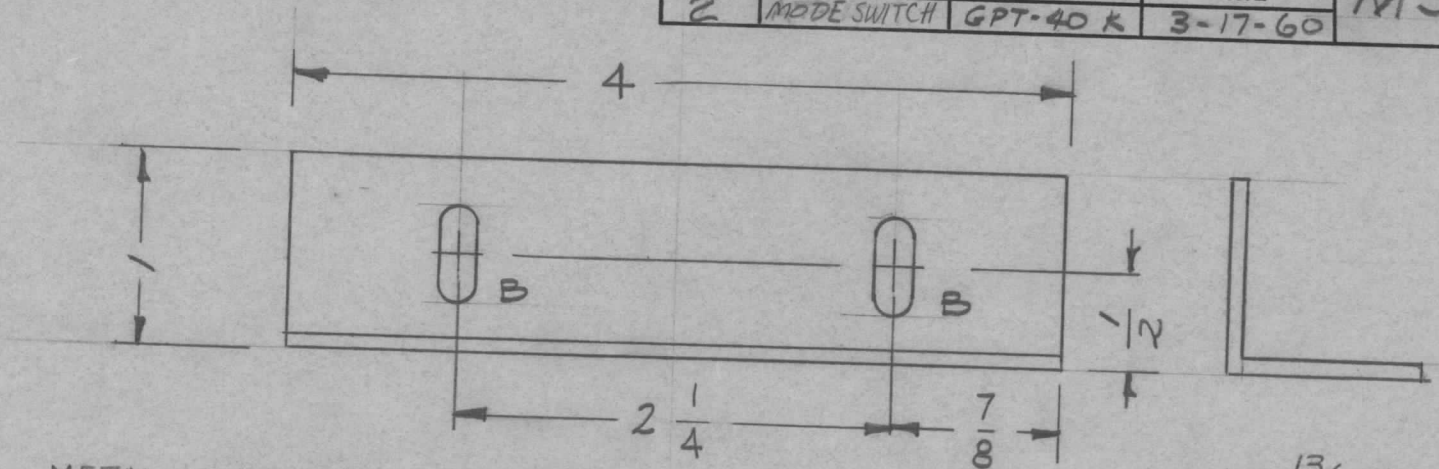
| | |
|-------------|-----------|
| DECIMALS | FRACTIONS |
| .X ± .05 | ± 1/64 |
| .XX ± .01 | ANGLES |
| .XXX ± .005 | ± 0° 30' |

TOLERANCES

CUT HERE
GUARANTEED
2-66

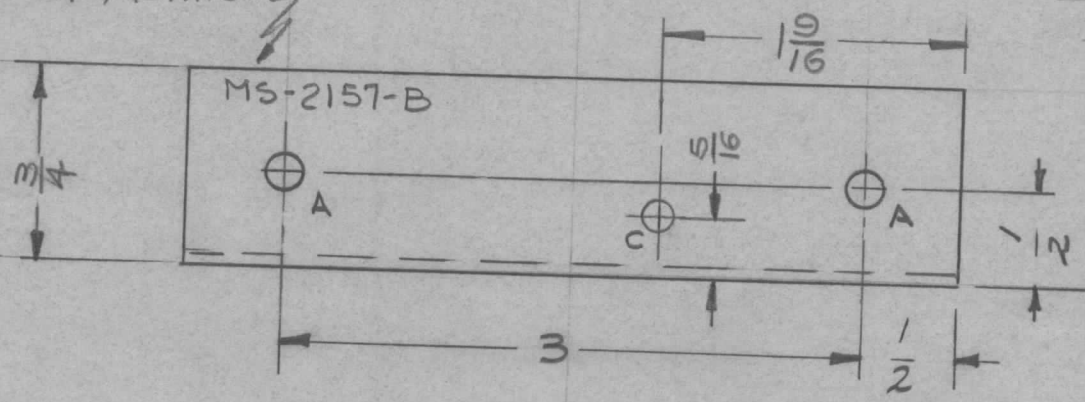
| REQ. | ITEM | PART NO. | DESCRIPTION | SYMBOL | | | | | | | | | | | |
|----------------|------|--------------|------------------------------|---------|--------|---------|-----------|--|---------|----|----|-------------------|--|----------------|--|
| | | $1/8$ | THE TECHNICAL MATERIEL CORP. | | | | | | | | | | | | |
| | | STOCK SIZE | MAMARONECK, NEW YORK | | | | | | | | | | | | |
| | | BRASS | STRAP, GROUND, | | | | | | | | | | | | |
| | | MATERIAL | ANT. TUN. LEFT SIDE PLATE | | | | | | | | | | | | |
| ISSUE | ITEM | CHANGED FROM | DATE | CH. NO. | DRAFTS | CHECKER | ENG. APP. | 1/2 H | 1021110 | 16 | 28 | | | | |
| TOLERANCES | | | | | | | | SCALE: HALF | DRAWN | | | | | | |
| DEC. DIM. ± | | | | | | | | TYPE & TEMPER | | | | HEAT TREAT. SPEC. | | CHECKED | |
| FRAC. DIM. ± | | | | | | | | FINISH & SPEC. NO. | | | | ELEC. DES. APP | | MECH. DES. APP | |
| ANGULAR DIM. ± | | | | | | | | MAXIMUM ALLOWABLE TOLERANCES HAVE BEEN DETERMINED AND ANY DEVIATIONS WILL BE CAUSE FOR REJECTION. REMOVE ALL BURRS AND SHARP EDGES | | | | FINAL APPROVAL | | | |
| | | | | | | | | | | | | MS-2156 | | | |

| | | | | |
|---------------|-------------|-----------|---------|-----------|
| REQ. PER UNIT | USED ON | | | MS-2157 B |
| | MODEL | ASSY. NO. | DATE | |
| 2 | MODE SWITCH | GPT-40 K | 3-17-60 | |



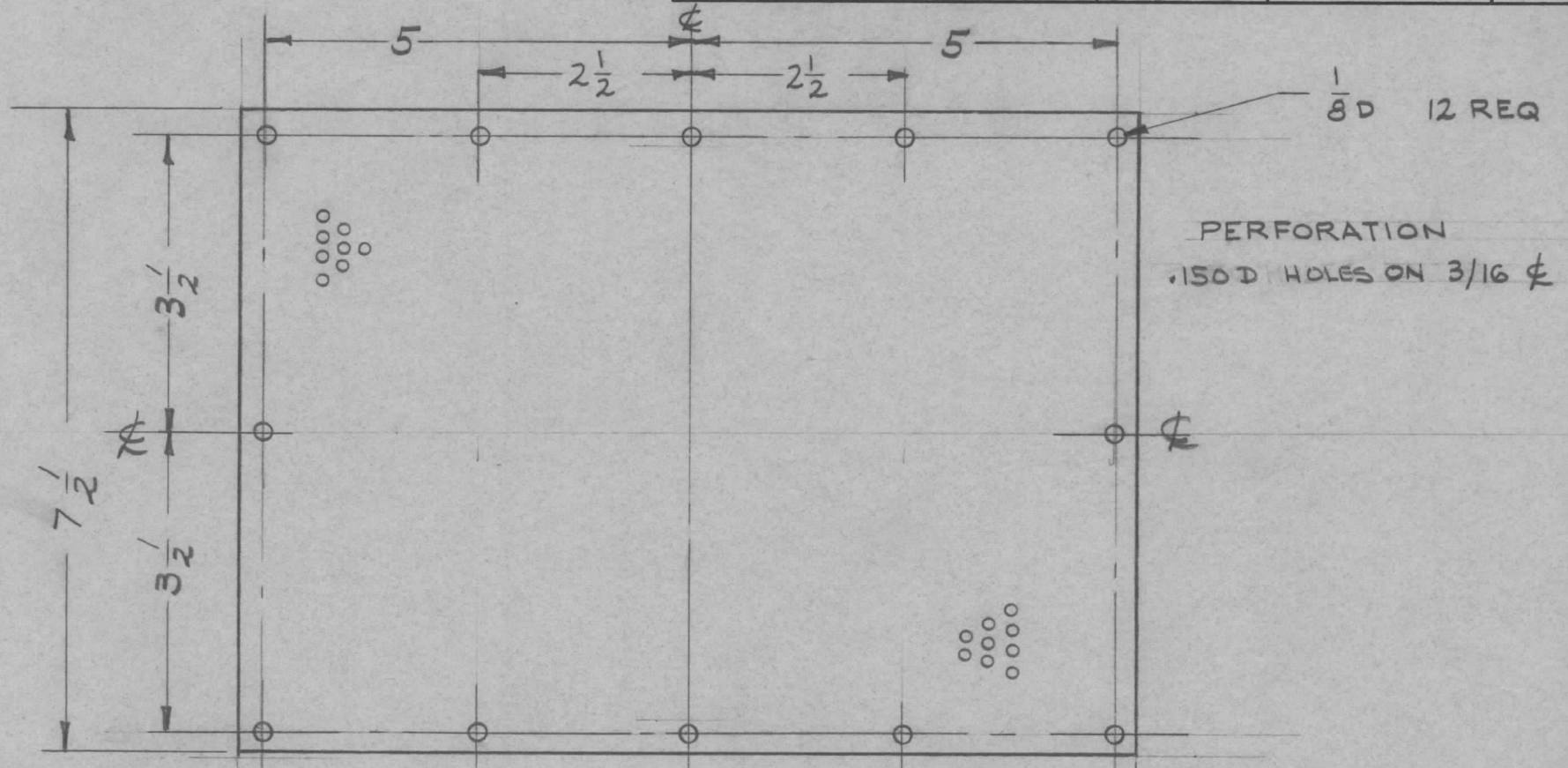
METAL STAMP TMC PART NO.
1/8 HIGH, GOTHIC.

- A - 13/64 (.203) D 2
- B - 3/16 x 1/2 SLOTS 2
- C - 5/32 D HOLE 1



| REQ. | ITEM | PART NO. | DESCRIPTION | | SYMBOL | | |
|---------------------|------|---|--|-----------------|--------------------|--|-------------------------|
| B | 1 | (2) "A" HOLES WERE 13/64 (.187) DIA. | 2-7-63 | 8141 | <i>[Signature]</i> | THE TECHNICAL MATERIEL CORP. MAMARONECK, NEW YORK | |
| | 3 | 3/4 WAS 1" DIM. | | | | | BRACKET CAPACITOR MOUNT |
| A | 2 | "A" Hole was 3/16 DIA. | 8-8-60 | 2723 | <i>[Signature]</i> | | |
| | 1 | 1 HOLE ADDED | | | | | |
| ISSUE | ITEM | CHANGED FROM | DATE | CH. NO. | DRAFTS | CHECKER | ENG. APP. |
| TOLERANCES | | | SCALE: FULL | | | | |
| DEC. DIM. ± | | | MAXIMUM ALLOWABLE TOLERANCES HAVE BEEN DETERMINED AND ANY DEVIATIONS WILL BE CAUSE FOR REJECTION. REMOVE ALL BURRS AND SHARP EDGES | | | | |
| FRAC. DIM. ± | | | | | | | |
| ANGULAR DIM. ± 1/64 | | | | | | | |
| 5052-H32 | | TYPE & TEMPER | HEAT TREAT. SPEC. | | DRAWN | | CHECKED |
| S404-YEL. IRIDITE | | FINISH & SPEC. NO. | | ELEC. DES. APP. | | MECH. DES. APP. | |
| | | | | | | MS-2157 B | |

| | | | | | |
|---------------|---------|------------|---------|---------|---|
| REQ. PER UNIT | USED ON | | | MS-2161 | A |
| | MODEL | ASS'Y. NO. | DATE | | |
| 1 | AP-103 | GPT-40K | 3-30-60 | | |



UNLESS OTHERWISE SPECIFIED
DIMENSIONS ARE IN INCHES AND INCLUDE
CHEMICALLY APPLIED OR PLATED FINISHES

| | |
|-------------|-----------|
| DECIMALS | FRACTIONS |
| .X ± .05 | ± 1/64 |
| .XX ± .01 | ANGLES |
| .XXX ± .005 | ± 0° 30' |

TOLERANCES

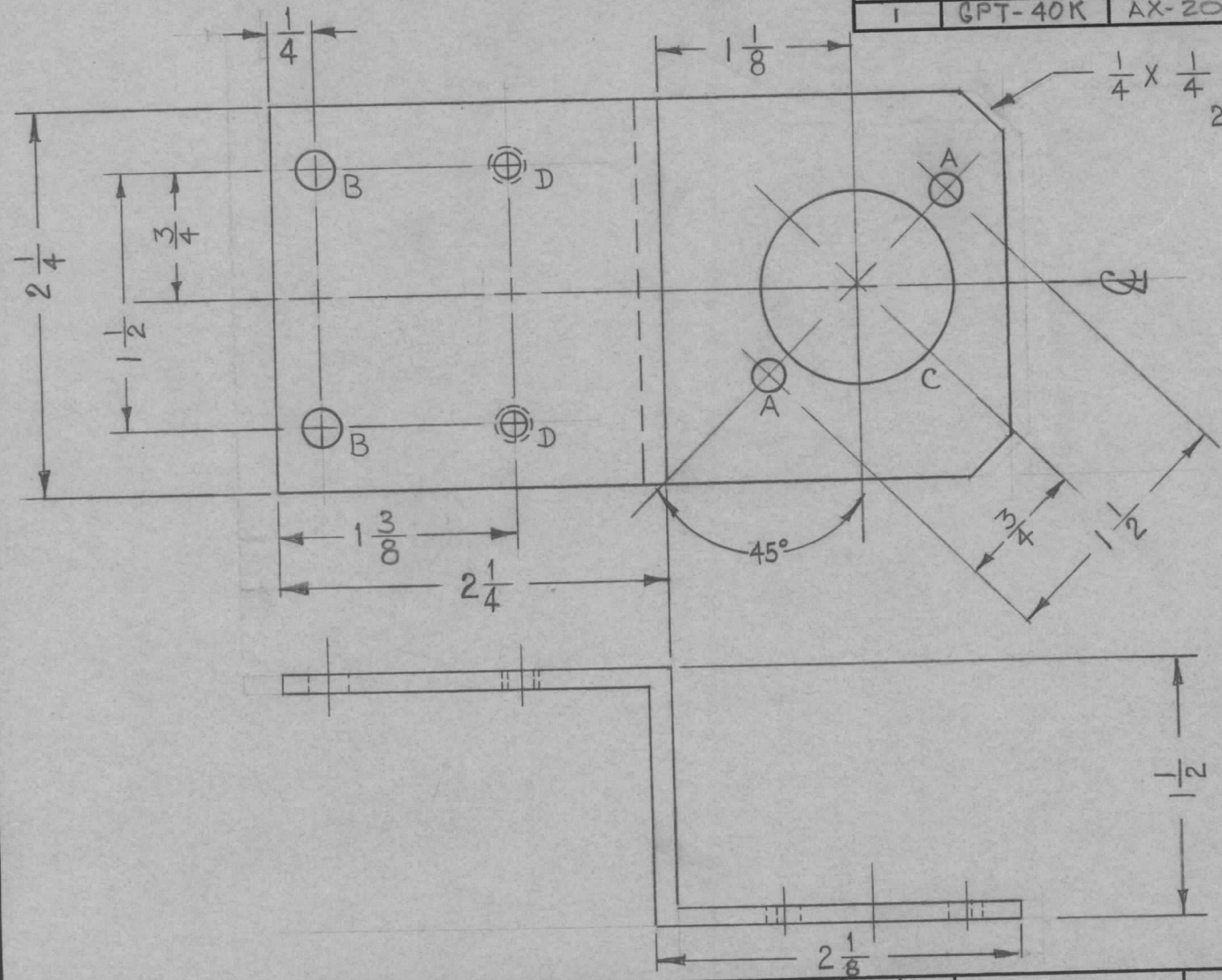
CUT HERE
GUARANTEED
2-66

REF. MS-2036

| REQ. | ITEM | PART NO. | DESCRIPTION | | | | SYMBOL |
|--------------------|------|---------------------|--|---------|----------------|---------|-----------|
| | | .064 | THE TECHNICAL MATERIEL CORP. | | | | |
| | | STOCK SIZE | MAMARONECK, NEW YORK | | | | |
| A | 1 | STOCK SIZE WAS .081 | SHIELD, PERFORATED | | | | |
| | | ALUMINUM | ANT. TUNER, RT. SIDE SHIELD | | | | |
| | | MATERIAL | | | | | |
| ISSUE | ITEM | CHANGED FROM | DATE | CH. NO. | DRAFTS | CHECKER | ENG. APP. |
| | | | | | | | |
| TOLERANCES | | | SCALE: HALF | | | | |
| DEC. DIM. ± | | | MAXIMUM ALLOWABLE TOLERANCES HAVE BEEN DETERMINED AND ANY DEVIATIONS WILL BE CAUSE FOR REJECTION. REMOVE ALL BURRS AND SHARP EDGES | | | | |
| FRAC. DIM. ± | | | | | | | |
| ANGULAR DIM. ± | | | | | | | |
| TYPE & TEMPER | | HEAT TREAT. SPEC. | DRAWN | CHECKED | FINAL APPROVAL | | |
| S404-YEL. IRIDITE | | | | | MS-2161 A | | |
| FINISH & SPEC. NO. | | ELEC. DES. APP | MECH. DES. APP | | | | |

| | | | |
|---------------|---------|------------|---------|
| REQ. PER UNIT | USED ON | | |
| | MODEL | ASS'Y. NO. | DATE |
| 1 | GPT-40K | AX-209 | 3-30-60 |

MS-2167 A



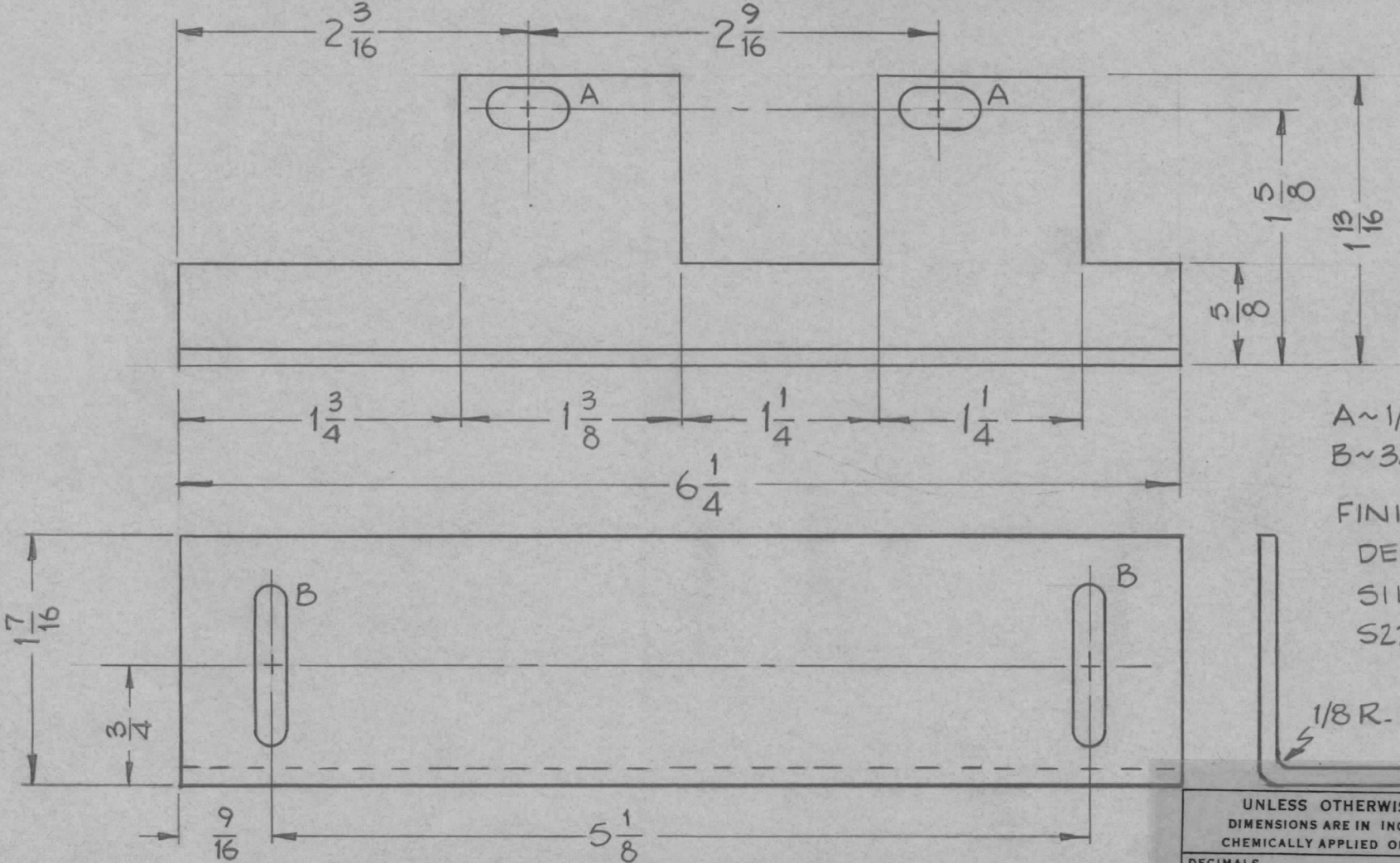
- A ~ 3/16 (.187) D. 2 REQ.
- B ~ 7/32 (.218) D. 2 "
- C ~ 1/8 D. 1 "
- D ~ DR & TAP FOR 8-32 2 "

1/8 RADIUS BENDS

Ref - LD-834 (1)

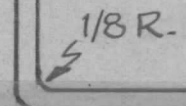
| ISSUE | ITEM | CHANGED FROM | DATE | CH. NO. | DRAFTS | CHECKER | ENG. APP. | REQ. | ITEM | PART NO. | DESCRIPTION | SYMBOL | |
|-------------------|------|---------------------|--|---------|--------|---------|-----------|--------------------|----------|------------------|--|---------|----------------|
| | | | | | | | | | | | THE TECHNICAL MATERIEL CORP. MAMARONECK, NEW YORK | | |
| A | 4 | 2 1/8 Dim Was 2 1/4 | 6-20-61 | 5105 | | | | | 1/8 | | BRACKET, PLATE METERING CIRCUIT | | |
| | 3 | 2 1/4 Dim Was 2 1/2 | | | | | | | ALUMINUM | | | | |
| | 2 | 1 3/8 Dim Was 1 5/8 | | | | | | | MATERIAL | | | | |
| | 1 | 1/4 Dim Was 1/2 | | | | | | | 5052-H32 | | | | |
| TOLERANCES | | | SCALE: | | | | | TYPE & TEMPER | | HEATTREAT. SPEC. | DRAWN | CHECKED | FINAL APPROVAL |
| DEC. DIM. ± | | | MAXIMUM ALLOWABLE TOLERANCES HAVE BEEN DETERMINED AND ANY DEVIATIONS WILL BE CAUSE FOR REJECTION. REMOVE ALL BURRS AND SHARP EDGES | | | | | S404 YELL IRIDITE | | | | | |
| FRAC. DIM. ± 1/64 | | | | | | | | FINISH & SPEC. NO. | | ELEC. DES. APP | MECH. DES. APP | | |
| ANGULAR DIM. ± | | | | | | | | | | | | MS-2167 | A |

| | | | | |
|---------------|---------|------------|--------|---------|
| REQ. PER UNIT | USED ON | | | MS-2168 |
| | MODEL | ASS'Y. NO. | DATE | |
| 2 | GPT-46K | MODIF. 10K | 4-1-60 | |



A ~ 1/4 x 1/2 SLOT 2 Req
 B ~ 3/16 x 1 " 2 "

FINISH ~
 DEGREASE
 S114-ZINC CHROMATE
 S220-RCAF BLUE GREY
 ENAMEL



UNLESS OTHERWISE SPECIFIED
 DIMENSIONS ARE IN INCHES AND INCLUDE
 CHEMICALLY APPLIED OR PLATED FINISHES

| | |
|-------------|-----------------|
| DECIMALS | FRACTIONS |
| .X ± .05 | ± 1/64 |
| .XX ± .01 | ANGLES ± 0° 30' |
| .XXX ± .005 | |


CUT HERE
 GUARANTEED
 12-66

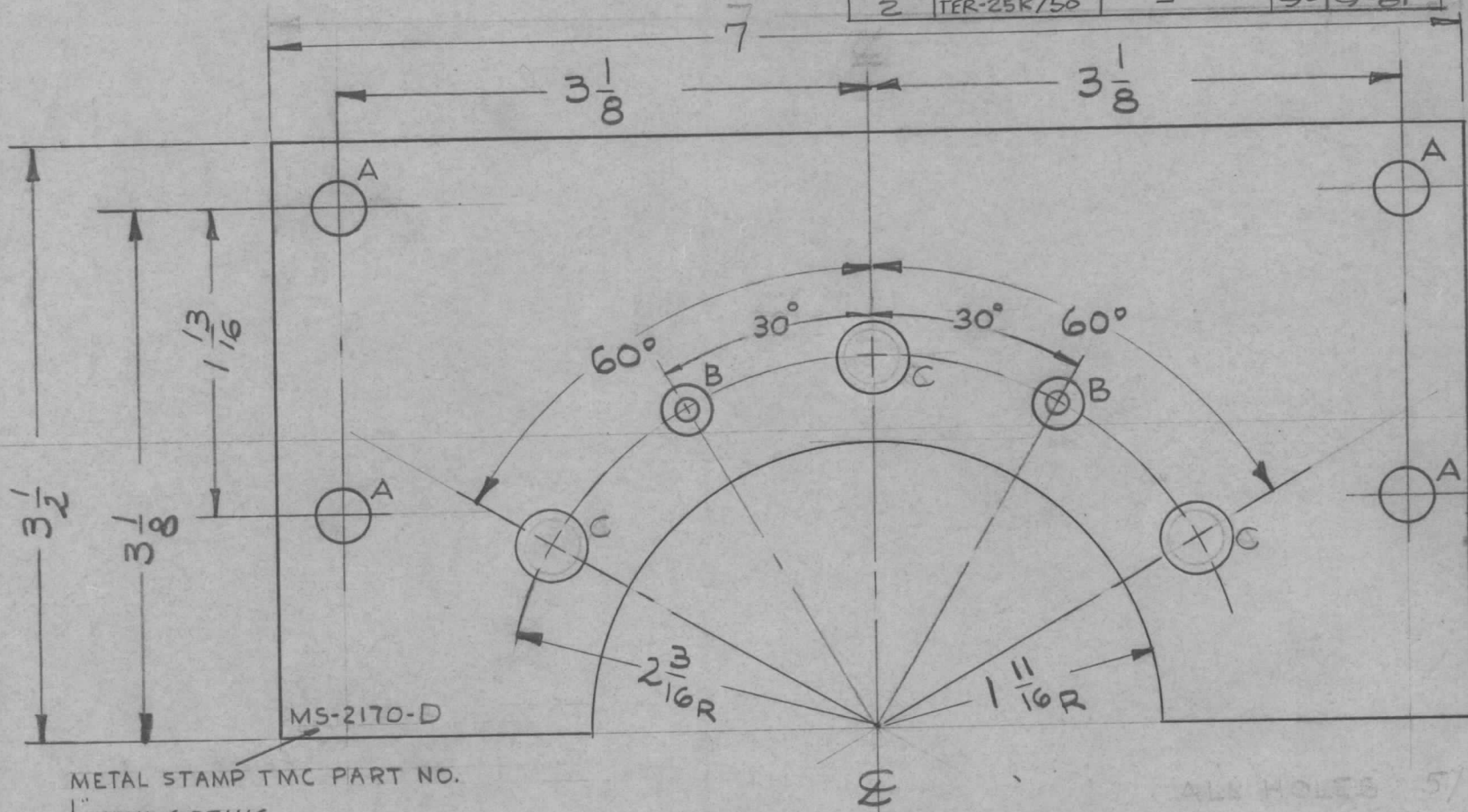
| | | | | | | | |
|----------------|------|--------------|---|---------|--------|---------|-----------|
| ISSUE | ITEM | CHANGED FROM | DATE | CH. NO. | DRAFTS | CHECKER | ENG. APP. |
| TOLERANCES | | | SCALE: | | | | |
| DEC. DIM. ± | | | MAXIMUM ALLOWABLE TOLERANCES HAVE BEEN DETERMINED AND ANY DEVIATIONS WILL BE CAUSE FOR REJECTION. | | | | |
| FRAC. DIM. ± | | | REMOVE ALL BURRS AND SHARP EDGES | | | | |
| ANGULAR DIM. ± | | | | | | | |

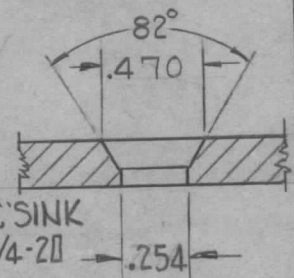
| | |
|-----------|--------------------|
| REQ. ITEM | PART NO. |
| | 11 GA |
| | STEEL |
| | MATERIAL |
| | TYPE & TEMPER |
| | HEAT TREAT. SPEC. |
| | FINISH & SPEC. NO. |

| | | | |
|--|--------------------|--------------------|--|
| THE TECHNICAL MATERIEL CORP. MAMARONECK, NEW YORK | | | |
| BRACKET, MTG. DOOR LATCH BOTTOM, FRONT & REAR | | | |
| DRAWN | CHECKED | FINAL APPROVAL | |
| SEE NOTE | <i>[Signature]</i> | <i>[Signature]</i> | |
| | | MS-2168 | |
| ELEC. DES. APP | MECH. DES. APP | | |

| REQ. PER UNIT | USED ON | | |
|---------------|------------|------------|---------|
| | MODEL | ASS'Y. NO. | DATE |
| 2 | GPT-40K | AX-209 | 4-1-60 |
| 2 | TER-25K/50 | - | 9-19-61 |

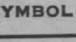
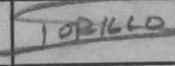
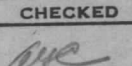
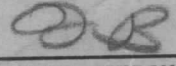
MS-2170 



A- $\frac{5}{16}$ DIA. 4REQ.
 B-SEE DETAIL

 C-SINK
 1/4-20 .254
 DETAIL-B
 2REQ.
 C- $\frac{13}{32}$ DIA. 3REQ.

METAL STAMP TMC PART NO.
 $\frac{1}{8}$ " HIGH GOTHIC

LD-871(1) (FOR GPT-40K ONLY)
 REF: LD-835 (1) for Spare Parts Only (FOR GPT-40K ONLY)

| ISSUE | ITEM | CHANGED FROM | DATE | CH. NO. | DRAFTS | CHECKER | ENG. APP. | REQ. | ITEM | PART NO. | DESCRIPTION | SYMBOL | |
|--|------|--|----------|---------|--------|---------------|---------------|---|------|-----------------|---|---|--|
| D | 1 | 30 HOLES WERE A HOLES | 1-17-62 | 6217 | EE | EE | EE | | | | THE TECHNICAL MATERIEL CORP. MAMARONECK, NEW YORK PLATE DIRECTIONAL COUPLER |  | |
| C | 2 | 1" B" HOLE WAS "A" HOLE | 11-20-61 | 5931 | EE | EE | EE | | | | | | |
| C | 1 | 1" B" HOLE ADDED | | | | | | | | | | | |
| B | 1 | ONE 5/16 DIA. HOLE ADDED; 30° | 10/17/61 | 5730 | EE | GB | EE | | | | | | |
| A | 2 | LD-871 REF added for Spare Parts Only Note Added | 11/28/60 | 3602 | DDM | GB | EE | | | | | | |
| TOLERANCES DEC. DIM. ± FRAC. DIM. ± $\frac{1}{64}$ ANGULAR DIM. ± | | | | | | | | SCALE: FULL MAXIMUM ALLOWABLE TOLERANCES HAVE BEEN DETERMINED AND ANY DEVIATIONS WILL BE CAUSE FOR REJECTION. REMOVE ALL BURRS AND SHARP EDGES | | | DRAWN:  CHECKED:  FINAL APPROVAL:  | | |
| | | | | | | | | 5052-H32 | 113L | | | | |
| | | | | | | | | S404-YEL. IRIDITE | | | | | |
| | | | | | | | | FINISH & SPEC. NO. | | ELEC. DES. APP. | MECH. DES. APP. | | |

APPLICATION

QTY
1MODEL USED ON
GPT-40 K

ASS'Y NO.

LTR

DESCRIPTION

REVISIONS

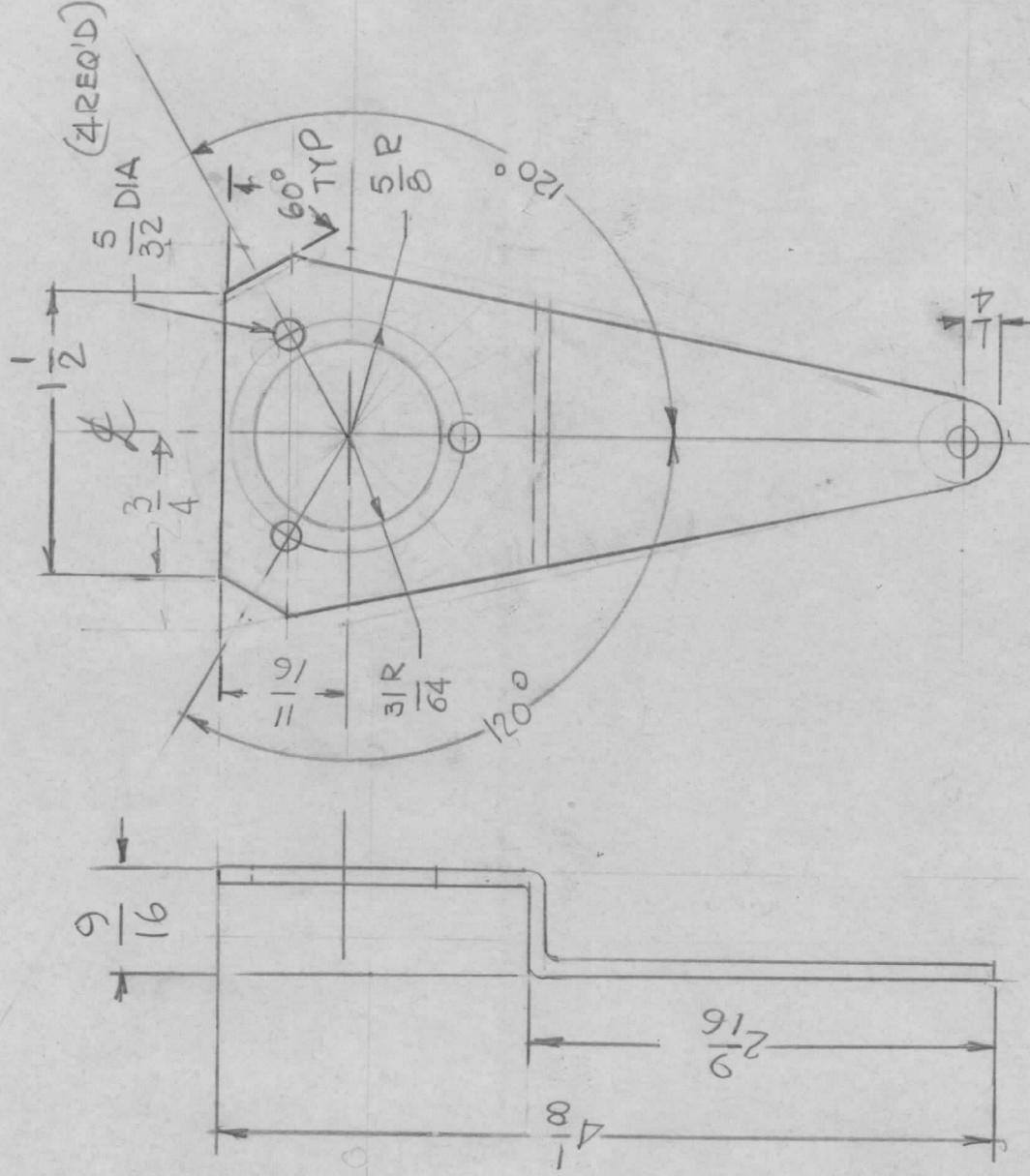
DATE

E.M.N.NO

DRAFT

CHKD

APPD



(MP 110)

UNLESS OTHERWISE SPECIFIED
DIMENSIONS ARE IN INCHES
AND INCLUDE CHEMICALLY APPLIED
OR PLATED FINISHESDECIMALS
.X ± .05 TOLS.
.XX ± .01
.XXX ± .005FRACTIONS
1/64ANGLES
0° .30'MATERIAL 081THK
ALUM S052-H32

FINISH

BLACK, ANODIZED

REQ'D ITEM

PART NUMBER

DESCRIPTION

LIST OF MATERIAL

SYM.

FINAL APPROVAL

DATE

DATE

MECH. DES.

DATE

ELECT. DES.

DATE

CHECKED

DATE

DRAWN

GDL

DATE

8-29-85

THE TECHNICAL MATERIEL CORP.
MAMARONECK, NEW YORK

BRACKET, KNOB HANDLE

NOTICE TO PERSONS RECEIVING THIS DRAWING
THE TECHNICAL MATERIEL CORPORATION claims proprietary right in the material
disclosed hereon. This drawing is issued in confidence for engineering information only
and may not be reproduced or used to manufacture anything shown hereon without
permission from THE TECHNICAL MATERIEL CORPORATION to the user. This drawing is
loaned for mutual assistance and is subject to recall at any time.SIZE
ACODE IDENT. NO.
82679

DWG NO.

MS 2177

ISSUE

SCALE 1:1

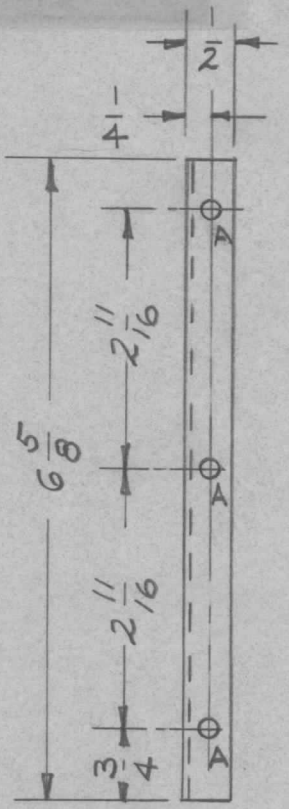
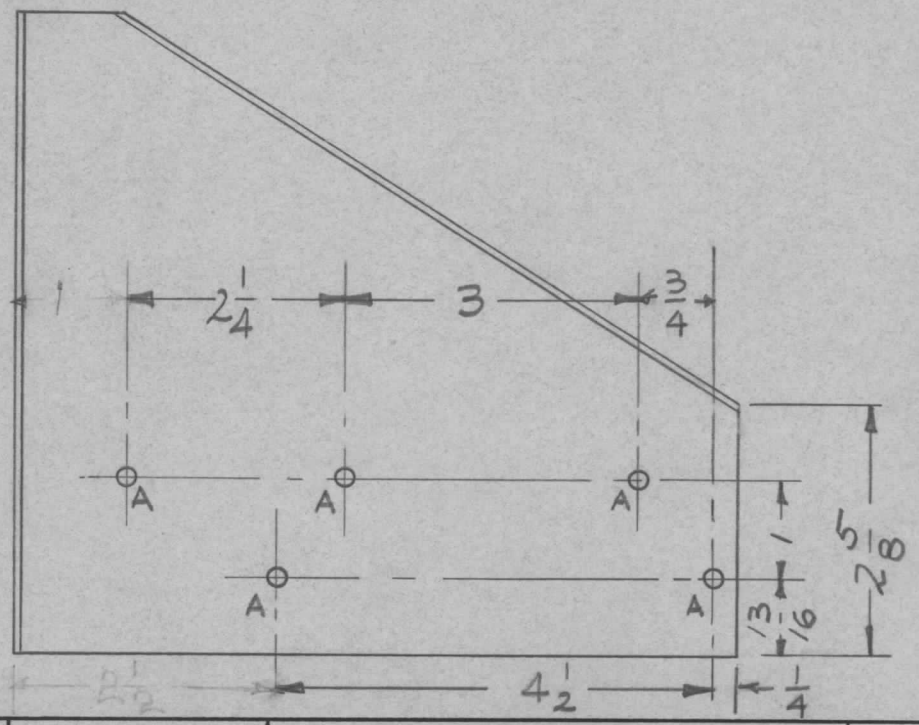
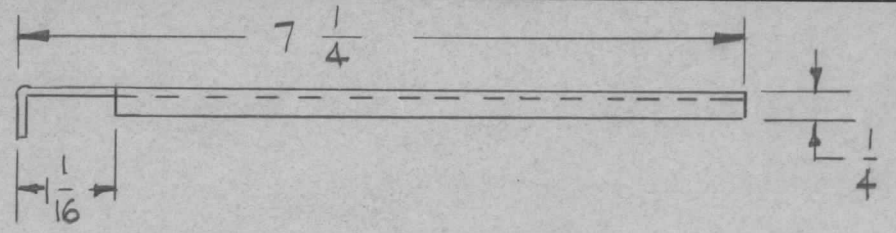
SHEET

OF

A-13/64 (.203) 8 REQ.

| REQ. PER UNIT | USED ON | | |
|---------------|---------|------------|---------|
| | MODEL | ASS'Y. NO. | DATE |
| 1 | LSP | | 4-14-60 |

MS-2191



UNLESS OTHERWISE SPECIFIED
DIMENSIONS ARE IN INCHES AND INCLUDE
CHEMICALLY APPLIED OR PLATED FINISHES

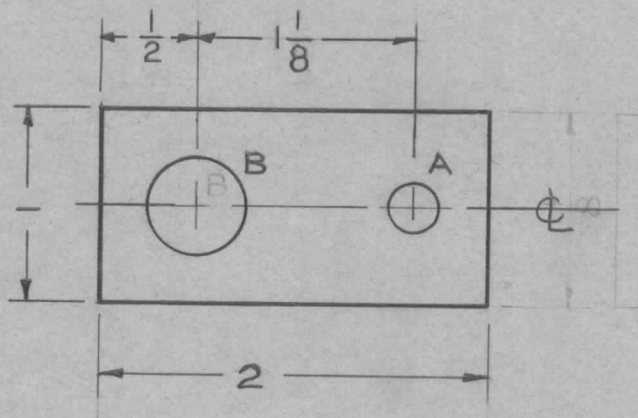
| DECIMALS | TOLERANCES | FRACTIONS |
|-------------|------------|-----------|
| .X ± .05 | | ± 1/64 |
| .XX ± .01 | | ANGLES |
| .XXX ± .005 | | ± 0° 30' |

CUT HERE
GUARANTEED
2-66

| REQ. | ITEM | PART NO. | DESCRIPTION | SYMBOL | | | | | |
|--------------------|------|-------------------|--|----------------|--------|----------------|-----------|----------------|--|
| | | .051 | THE TECHNICAL MATERIEL CORP. | | | | | | |
| | | STOCK SIZE | MAMARONECK, NEW YORK | | | | | | |
| | | ALUMINUM | LEFT SIDE PLATE | | | | | | |
| | | MATERIAL | | | | | | | |
| ISSUE | ITEM | CHANGED FROM | DATE | CH. NO. | DRAFTS | CHECKER | ENG. APP. | | |
| TOLERANCES | | | SCALE: HALF | | | | | | |
| DEC. DIM. ± | | | MAXIMUM ALLOWABLE TOLERANCES HAVE BEEN DETERMINED AND ANY DEVIATIONS WILL BE CAUSE FOR REJECTION. REMOVE ALL BURRS AND SHARP EDGES | | | | | | |
| FRAC. DIM. ± | | | | | | | | | |
| ANGULAR DIM. ± | | | | | | | | | |
| TYPE & TEMPER | | HEAT TREAT. SPEC. | | DRAWN | | CHECKED | | FINAL APPROVAL | |
| 5404-YEL. IRIDITE | | | | FORILLER | | [Signature] | | MS-2191 | |
| FINISH & SPEC. NO. | | | | ELEC. DES. APP | | MECH. DES. APP | | | |

| | | | | |
|---------------------|---------|------------|---------|---------|
| REQ. PER UNIT | USED ON | | | MS-2192 |
| | MODEL | ASS'Y. NO. | DATE | |
| 6 | GPT-40K | AP-103 | 4-18-60 | |

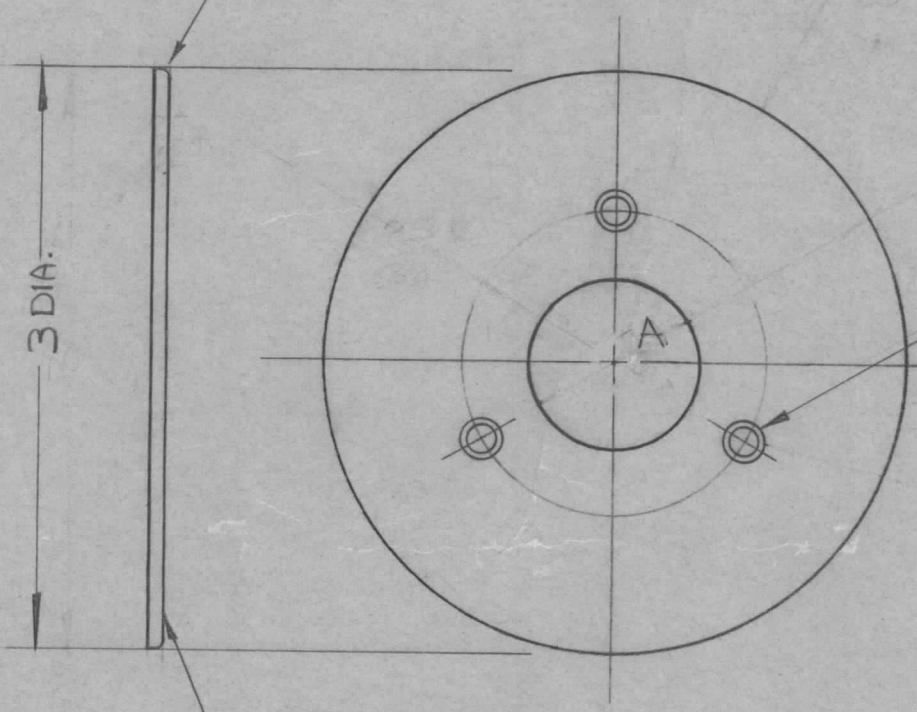
A ~ 1/4 DIA. 1 REQ.
B ~ 1/2 DIA. 1 REQ.



| ISSUE | ITEM | CHANGED FROM | DATE | CH. NO. | DRAFTS | CHECKER | ENG. APP. | REQ. | ITEM | PART NO. | DESCRIPTION | SYMBOL | |
|--|------|--------------|--|---------|--------|---------|-----------|------|------|--------------------|---|----------------|----------------|
| | | | | | | | | | | 1/8 THK. | THE TECHNICAL MATERIEL CORP. MAMARONECK, NEW YORK LUG, CONNECTING | | |
| | | | | | | | | | | STOCK SIZE | | | |
| | | | | | | | | | | ALUMINUM | | | |
| | | | | | | | | | | MATERIAL | | | |
| | | | | | | | | | | 5052-H32 | CU | AIQ | |
| TOLERANCES | | | SCALE: FULL | | | | | | | | DRAWN | CHECKED | FINAL APPROVAL |
| DEC. DIM. ± FRAC. DIM. ± 1/64 ANGULAR DIM. ± | | | MAXIMUM ALLOWABLE TOLERANCES HAVE BEEN DETERMINED AND ANY DEVIATIONS WILL BE CAUSE FOR REJECTION. REMOVE ALL BURRS AND SHARP EDGES | | | | | | | | | | |
| | | | | | | | | | | 5404 IRIDITE | | | |
| | | | | | | | | | | FINISH & SPEC. NO. | ELEC. DES. APP | MECH. DES. APP | |
| | | | | | | | | | | | | MS-2192 | |

| REQ. PER UNIT | USED ON | | | MS-2195 | C |
|---------------|------------------------|------------|----------|---------|---|
| | MODEL | ASS'Y. NO. | DATE | | |
| 1 | GPT-40K | AX-209 | 4-20-60 | | |
| 1 | GPT-40K() 3 AS-120 | AX-353 | 12-23-63 | | |
| 1 | GPT-40K() 4 AS-125 | AX-458 | 12-23-63 | | |

NOTE:
ROUND OFF EDGE



A ~ 7/8 DIA 1 REQ'D

DRILL & C'SK FOR 8-32 F.H.S.
ON 25/32 R. 120° APART. 3 REQ.

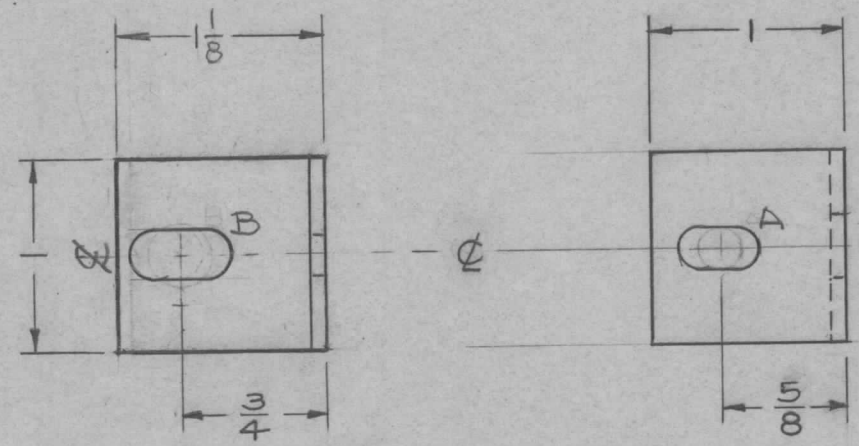
SMOOTH FINISH

| ISSUE | ITEM | CHANGED FROM | DATE | CH. NO. | DRAFTS | CHECKER | ENG. APP. | REQ. ITEM | PART NO. | DESCRIPTION | SYMBOL | |
|--|------|----------------------------------|----------|---------|--------|---------|-----------|--|-------------------|--|---------|----------------|
| C | 1 | DWG UPDATED | 12/23/63 | 10642 | 470 | JWA | WFB | | | THE TECHNICAL MATERIEL CORP. MAMARONECK, NEW YORK | C | |
| B | 1 | FINISH WAS GOLD PLATE .000025 | 11/21/61 | 5953 | C.A | JDM | WFB | .081 | STOCK SIZE | | | |
| A | 2 | NOTE ADDED SIDE VIEW ADDED | 6/29/60 | 2562 | WJ | JWA | WFB | BRASS | MATERIAL | | | |
| TOLERANCES | | | | | | | | SCALE: | | | | |
| DEC. DIM. ± FRAC. DIM. ± 1/64 ANGULAR DIM. ± | | | | | | | | MAXIMUM ALLOWABLE TOLERANCES HAVE BEEN DETERMINED AND ANY DEVIATIONS WILL BE CAUSE FOR REJECTION. REMOVE ALL BURRS AND SHARP EDGES | | | | |
| | | | | | | | | FREE TURNING | | WFB | JWA | WFB |
| | | | | | | | | TYPE & TEMPER | HEAT TREAT. SPEC. | DRAWN | CHECKED | FINAL APPROVAL |
| | | | | | | | | RHODIUM PLATE | | | WFB | |
| | | | | | | | | FINISH & SPEC. NO. | ELEC. DES. APP. | MECH. DES. APP. | MS-2195 | C |

| | | | | | |
|---------------|---------|------------|---------|---------|---|
| REQ. PER UNIT | USED ON | | | MS-2199 | A |
| | MODEL | ASS'Y. NO. | DATE | | |
| 1 | GPT-40K | AX-209 | 4-22-60 | | |

A \checkmark $\frac{13}{64} \times \frac{13}{32}$ SLOT 1 REQ.

B \checkmark $\frac{1}{4} \times \frac{1}{2}$ SLOT 1 REQ.



| ISSUE | ITEM | CHANGED FROM | DATE | CH. NO. | DRAFTS | CHECKER | ENG. APP. | REQ. ITEM | PART NO. | DESCRIPTION | SYMBOL | |
|--|------|-------------------------|---|---------|-------------------|---------|-----------------|-----------|------------|------------------------------|--------|--|
| | | | | | | | | | .081 GA. | THE TECHNICAL MATERIEL CORP. | | |
| | | | | | | | | | STOCK SIZE | MAMARONECK, NEW YORK | | |
| A | 3 | TITLE WAS SUPPORT, COIL | 7 19 60 | 2605 | Cy | JJE | DB | | ALUMINUM | BRACKET, FEEDTHRU | | |
| | 2 | "B" SLOT WAS 5/16 D. | | | | | | | MATERIAL | TO COIL | | |
| | 1 | "A" SLOT WAS 13/64 D. | | | | | | | 5052-H32 | | | |
| TOLERANCES | | | SCALE: FULL | | | | | | | | | |
| DEC. DIM. \pm FRAC. DIM. \pm 1/64 ANGULAR DIM. \pm | | | MAXIMUM ALLOWABLE TOLERANCES HAVE BEEN DETERMINED AND ANY DEVIATIONS WILL BE CAUSE FOR REJECTION: REMOVE ALL BURRS AND SHARP EDGES | | | | | | | | | |
| | | | TYPE & TEMPER | | HEAT TREAT. SPEC. | | | | | | | |
| | | | IRIDITE | | S404 | | | | | | | |
| | | | FINISH & SPEC. NO. | | ELEC. DES. APP. | | MECH. DES. APP. | | | | | |
| | | | | | | | | | | MS-2199 | A | |