

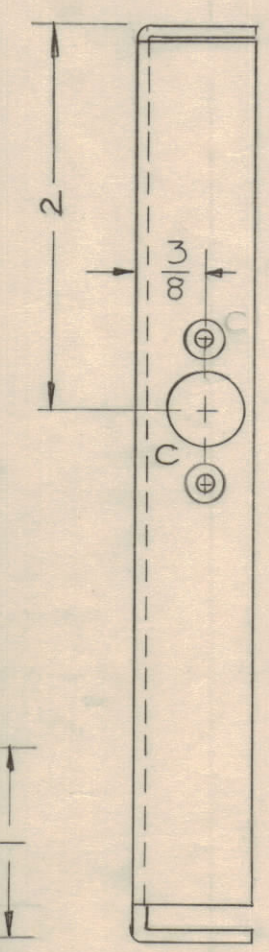
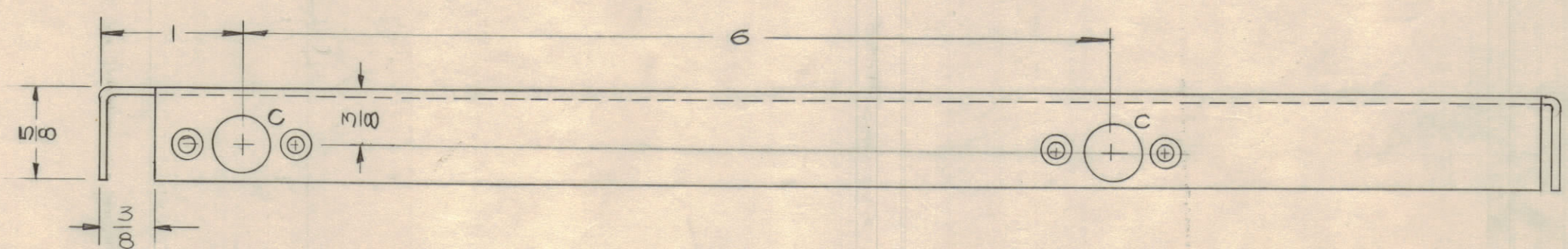
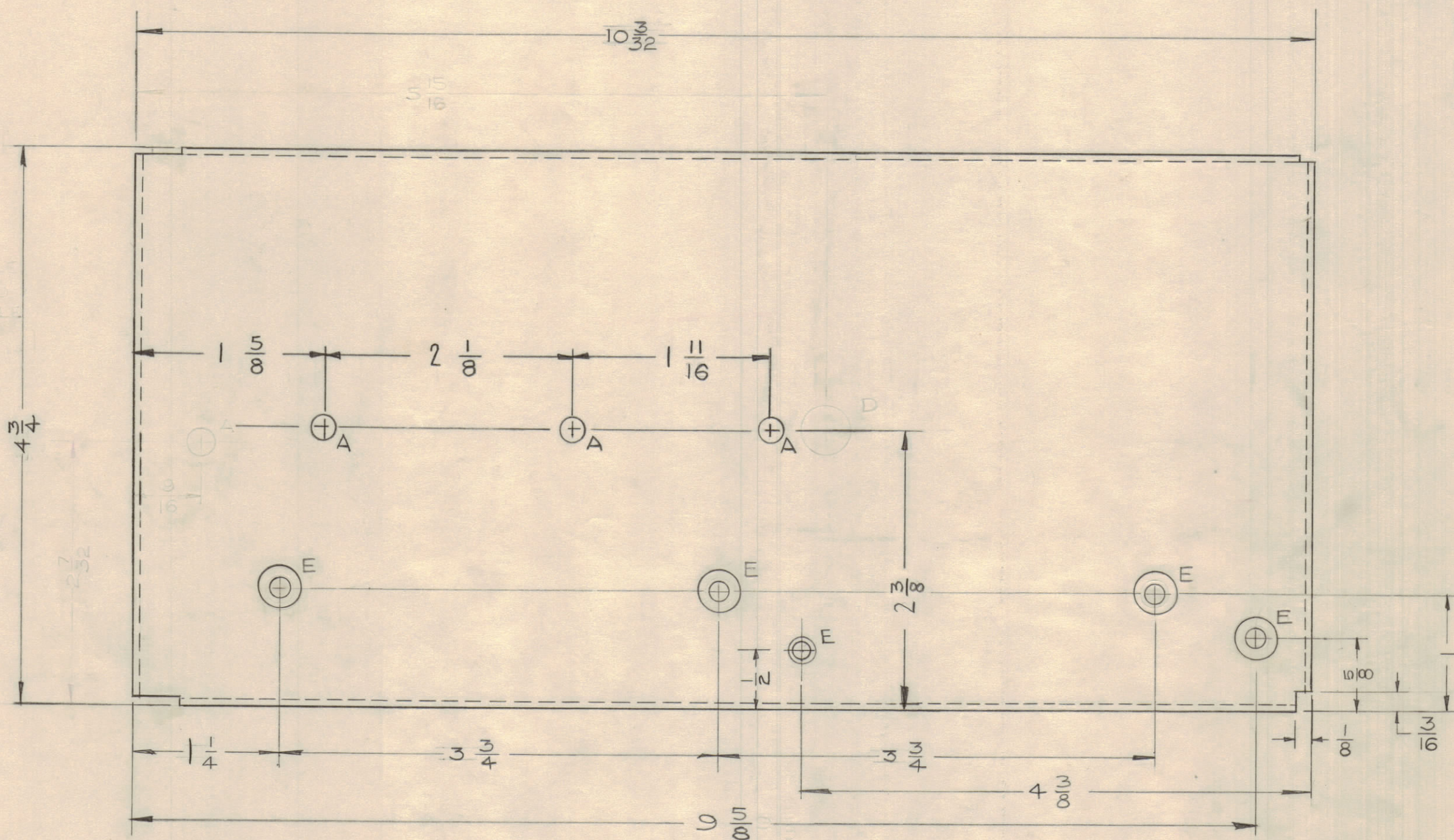
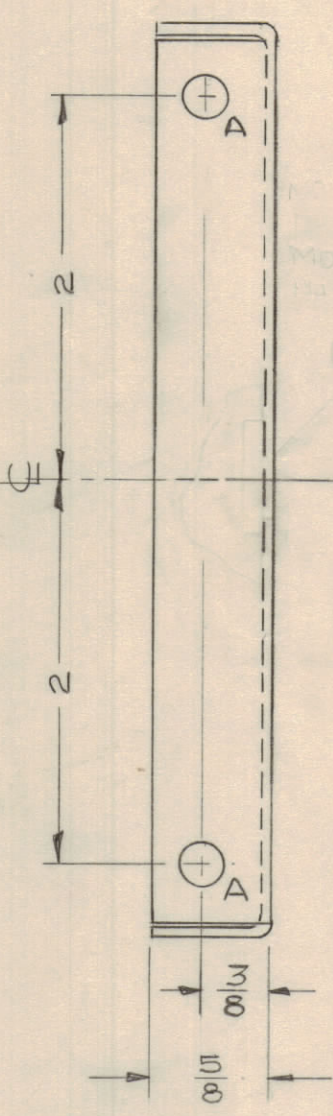
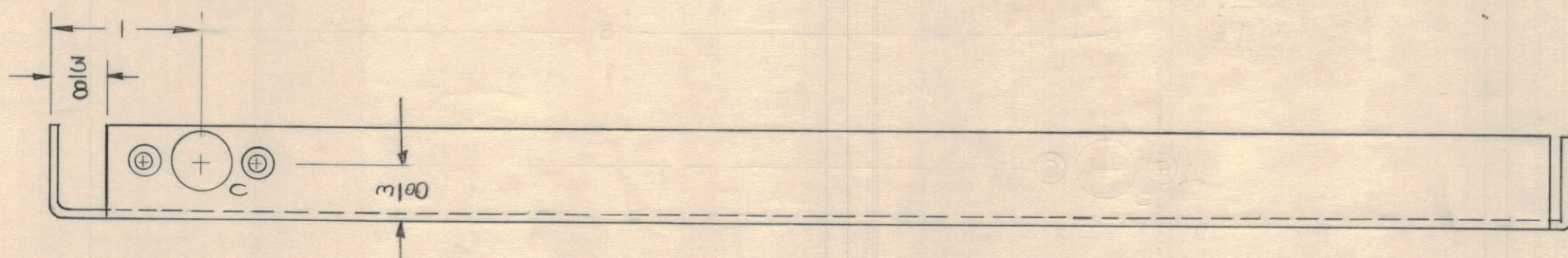
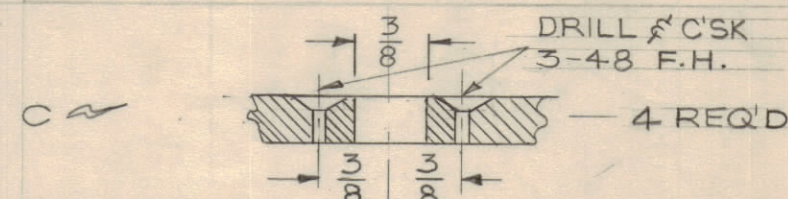
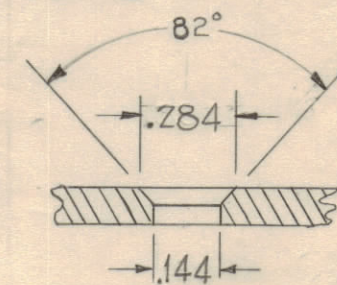
NOTICE TO PERSONS RECEIVING THIS DRAWING

THE TECHNICAL MATERIEL CORPORATION claims proprietary right in the material disclosed herein. This drawing is issued in confidence for engineering information only and may not be reproduced or used to manufacture anything shown hereon without permission from THE TECHNICAL MATERIEL CORPORATION to the user. This drawing is loaned for mutual assistance and is subject to recall at any time.

Property of:
THE TECHNICAL MATERIEL CORPORATION
 MAMARONECK, NEW YORK

A ~ 13/64 DIA. 5 REQ'D

E ~ DR. & C'SK 6-32 5 REQ'D



DECIMALS		FRACTIONS	
.x ± .05	TOLERANCES	± 1/64	ANGLES ± 0° 30'
.xx ± .01		± 1/84	
.xxx ± .005		± 1/84	

CUT HERE
 GUARANTEED
 2-44

ISSUE	ZONE	DESCRIPTION	DATE	CH. NO.	DRAFTS	CHECKER	ENG. APP.
C		ES# 1 @ Hole Added, 1 @ Hole Relocated	2-14-61	4123	RLU	gob	
B		HZ TE Detail, 284 was .337, .144 was .169	11-26-60	3298	J.C.B.	gob	
A		D4 (1) E HOLE ADDED	8-17-60	#	CU	gob	
		G3 (1) C DETAIL DELETED					

SCALE:
 MAXIMUM ALLOWABLE TOLERANCES HAVE BEEN DETERMINED AND ANY DEVIATIONS WILL BE CAUSE FOR REJECTION.
 REMOVE ALL BURRS AND SHARP EDGES

REQ PER UNIT	MODEL	SECTION	ASS'Y. NO.	DATE
1	CBE-1			4-11-60

REQ. ITEM	PART NO.	DESCRIPTION	SYMBOL
	.064	THE TECHNICAL MATERIEL CORP. MAMARONECK, NEW YORK	
	ALUMINUM	RIGHT SIDE PLATE	
	5052-H32		
	S404-YEL. IRIDITE		
	MS-2187		C