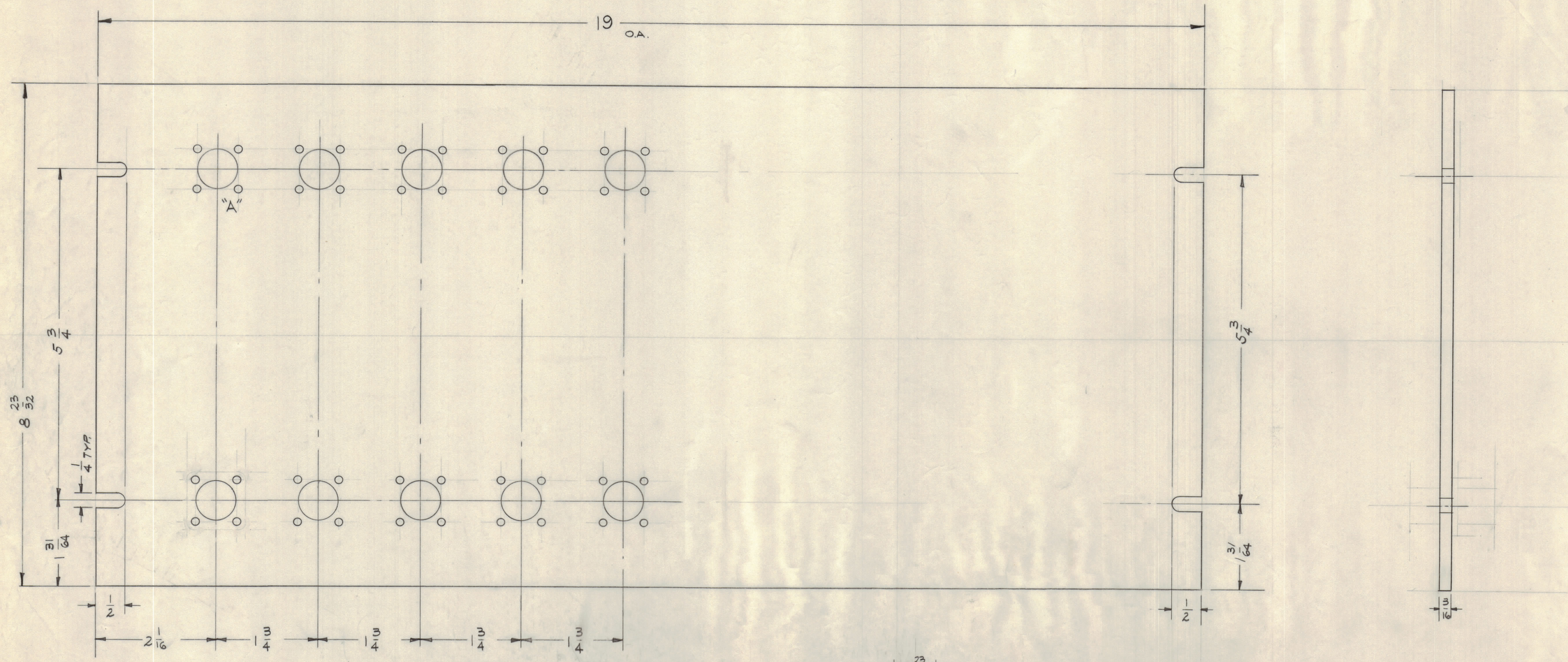


11 10 9 8 7 6 5 4 3 2 1

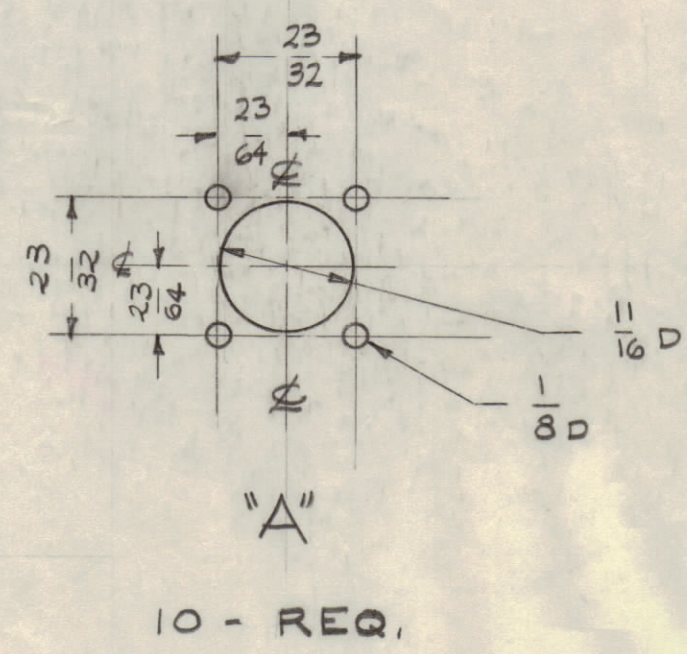
NOTICE TO PERSONS RECEIVING THIS DRAWING
 THE TECHNICAL MATERIEL CORPORATION claims proprietary right in the material disclosed herein. This drawing is issued in confidence for engineering information only and may not be reproduced or used to manufacture anything shown hereon without permission from THE TECHNICAL MATERIEL CORPORATION to the user. This drawing is loaned for mutual assistance and is subject to recall at any time.
 Properly of:
 THE TECHNICAL MATERIEL CORPORATION
 MAMARONECK, NEW YORK



NOTES

FINISH:
 S-404 - YELLOW IRIDITE
 S-114 - ZINC CHROMATE PRIMER
 S-115 - TMC SMOOTH GREY ENAMEL } FRONT & EDGES ONLY.
 OR PAINT TO CUST. SPEC.

MACHINING
 1 - LATERAL BOW OF PANEL MUST BE KEPT TO .031 TOL.
 2 - MILL ALL EDGES.
 3 - HOLES MUST BE DRILLED.
 4 - PANEL MUST BE FREE OF ALL MACHINING MARKS, GOUGES, AND SCRATCHES. IF NECESSARY, SAND FRONT OF PANEL WITH NO. 120 GRIT SANDPAPER.



REF: (8)-LD-719 ENGRAVING

ISSUE	ZONE	DESCRIPTION	DATE	CH. NO.	DRAFTS	CHECKER	ENR. APP.
TOLERANCES			SCALE:				
DEC. DIM. ±			MAXIMUM ALLOWABLE TOLERANCES HAVE BEEN DETERMINED AND ANY DEVIATIONS WILL BE CAUSE FOR REJECTION.				
FRAC. DIM. ±			REMOVE ALL BURRS AND SHARP EDGES				
ANGULAR DIM. ±							

UNLESS OTHERWISE SPECIFIED DIMENSIONS ARE IN INCHES AND INCLUDE CHEMICALLY APPLIED OR PLATED FINISHES	
DECIMALS	FRACTIONS
± .05	± 1/16
± .01	ANGLES ± 0° 30'
± .005	
TOLERANCES	

REQ. ITEM	PART NO.	DESCRIPTION	SYMBOL
	3/16 THICK.	THE TECHNICAL MATERIEL CORP. MAMARONECK, NEW YORK	
	STOCK SIZE	PANEL, FRONT, MACHINING	
	ALUMINUM	QDP-GSP-10-1	
	2024-T3		
	TYPE & TEMPER		
		HEAT TREAT SPEC.	
		SEE NOTE	
		FINISH & SPEC. NO.	MS-2162

FORM-111 11 10 9 8 7 6 5 4 3 2 1