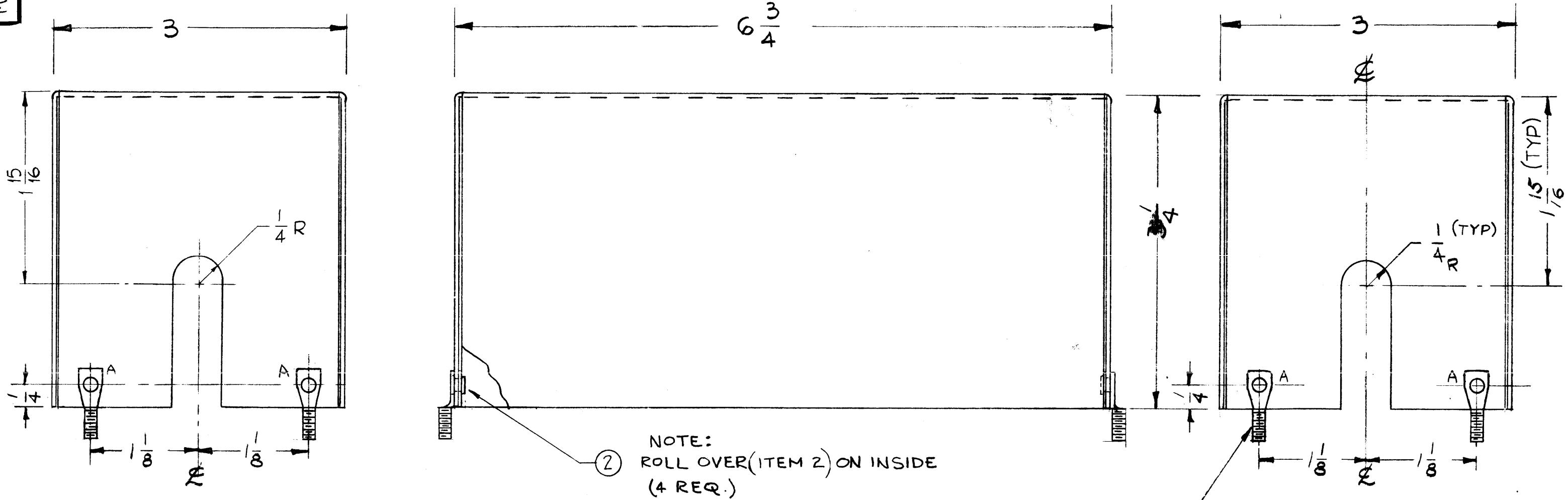


MS-2152  
C

A  $\surd$  1/8 DIA. HOLES 4 REQ.



NOTE:  
② ROLL OVER (ITEM 2) ON INSIDE  
(4 REQ.)

NOTICE TO PERSONS RECEIVING THIS DRAWING

THE TECHNICAL MATERIEL CORPORATION claims proprietary right in the material disclosed hereon. This drawing is issued in confidence for engineering information only and may not be reproduced or used to manufacture anything shown hereon without permission from THE TECHNICAL MATERIEL CORPORATION to the user. This drawing is loaned for mutual assistance and is subject to recall at any time.

Property of:  
THE TECHNICAL MATERIEL CORPORATION  
MAMARONECK, NEW YORK

C	1	ITEM(2) & NOTE ADDED	6-14-62	6796	G.S.	<i>[Signature]</i>	<i>[Signature]</i>
B	1	Cutout Added (to left Lip)	1-17-61	3919	RU	<i>[Signature]</i>	<i>[Signature]</i>
A	2	DIA. OF "A" HOLES ADDED	6/10/60	-	CY	<i>[Signature]</i>	<i>[Signature]</i>
	1	SPADE BOLT RELOCATED					
ISSUE	ITEM	CHANGED FROM	DATE	CH. NO.	DRAFTS	CHECKER	ENG. APP.
TOLERANCES			SCALE:				
DEC. DIM. $\pm$			MAXIMUM ALLOWABLE TOLERANCES HAVE BEEN DETERMINED AND ANY DEVIATIONS WILL BE CAUSE FOR REJECTION.				
FRAC. DIM. $\pm$			REMOVE ALL BURRS AND SHARP EDGES				
ANGULAR DIM. $\pm$							

1	CMO			3-21-60
REQ. PER UNIT	MODEL	PROJECT NO.	ASSY. NO.	DATE
USED ON				

4	2	EY-100-2	EYELET, FLAT FLANGE	
4	1	SC-107-1	BOLT, SPADE	
REQ. ITEM	PART NO.		DESCRIPTION	SYMBOL
.051			THE TECHNICAL MATERIEL CORP.	
ALUMINUM			MAMARONECK, NEW YORK	
5052-H32			CONDENSER SHIELD	
6404-YEL. IRDITE				
FINISH & SPEC. NO.				
TYPE & TEMPER			HEAT TREAT. SPEC.	DRAWN
ELEC. DES. APP.			MECH. DES. APP.	FINAL APPROVAL
			<i>[Signature]</i>	
			MS-2152 C	