

REQ. PER UNIT	USED ON		
	MODEL	ASS'Y. NO.	DATE
1	XFK	A-622	8-15-55

MS 209 B

HOLE LEGEND		
HOLE	DESCRIPTION	REQ
A	1/8 DIA.	3
B	5/16 DIA.	6
C	1/16 DIA.	2
D	7/16 DIA.	4

MARK TMC PART NO.  
1/8 HIGH GOTHIC W/LATEST  
REVISION LETTER

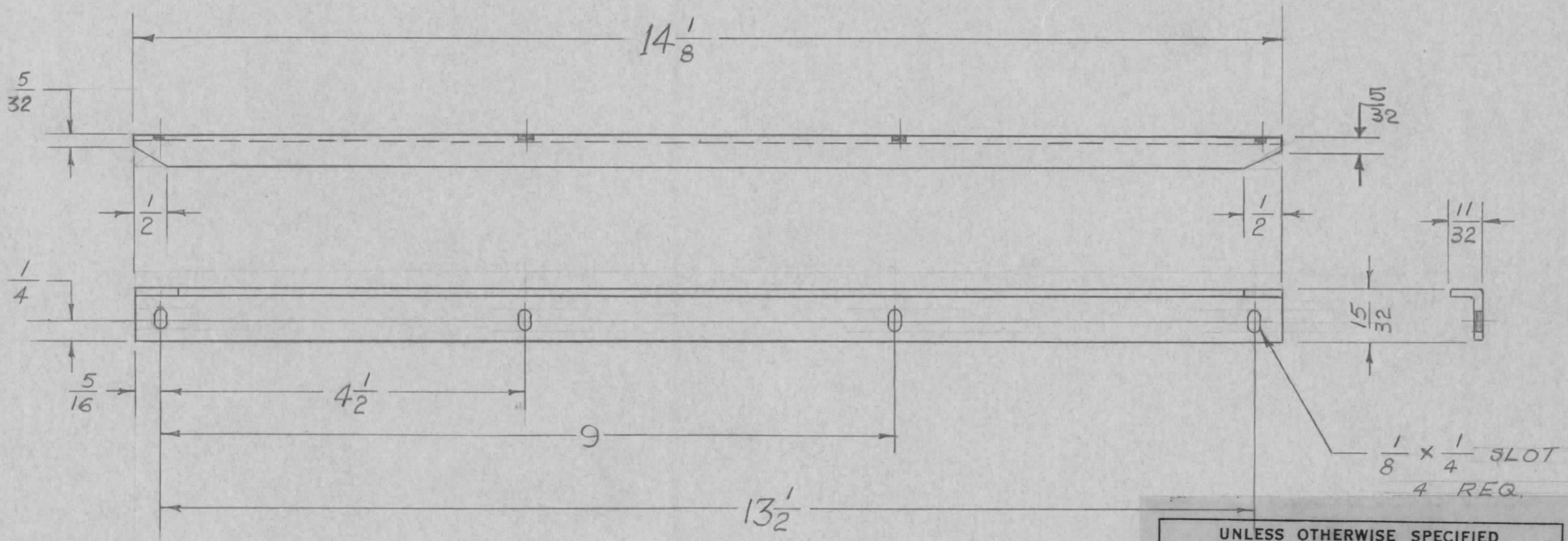
ISSUE	ITEM	CHANGED FROM	DATE	CH. NO.	DRAFTS	CHECKER	ENG. APP.	REQ. ITEM	PART NO.	DESCRIPTION	SYMBOL		
B		DRAWING UPDATED	1-5-67	17631	RME	JCS	EMN	3/16 THK		THE TECHNICAL MATERIEL CORP. MAMARONECK, NEW YORK 200 KC OVEN PLATE XFK	MS-209 B		
A	1	S404-IRIDITE WAS S101 CAUSTIC DIP	12-7-59	1001	P			STOCK SIZE					
+	+	REDRAWN NO CHANGE	8-15-55	+	AB	JAJ	WOL	ALUMINUM					
								MATERIAL					
TOLERANCES								2024-T3	—H—	168-15-55	JAJ	AJJ	
SCALE:								TYPE & TEMPER		HEAT TREAT. SPEC.	DRAWN	CHECKED	FINAL APPROVAL
DEC. DIM. ±								S-404-IRIDITE					
FRAC. DIM. ± 1/64								FINISH & SPEC. NO.		ELEC. DES. APP.	MECH. DES. APP.		
ANGULAR DIM. ±													
MAXIMUM ALLOWABLE TOLERANCES HAVE BEEN DETERMINED AND ANY DEVIATIONS WILL BE CAUSE FOR REJECTION.													
REMOVE ALL BURRS AND SHARP EDGES													

IF IT IS FOUND DESIRABLE TO CHANGE ANY TOLERANCE OR OTHER DETAIL SPECIFIED ON THIS DRAWING NOTIFY THE PURCHASER PROMPTLY.

MS-212 B

MAXIMUM ALLOWABLE TOLERANCES HAVE BEEN DETERMINED AND DEVIATIONS WILL BE CAUSE FOR REJECTION. REMOVE ALL BURRS AND SHARP EDGES

REQ. PER UNIT	USED ON			
	MODEL	PROJECT NO.	ASS'Y. NO.	DATE
2	XFK		A-G80, 681	6-13-51



UNLESS OTHERWISE SPECIFIED DIMENSIONS ARE IN INCHES AND INCLUDE CHEMICALLY APPLIED OR PLATED FINISHES

DECIMALS	TOLERANCES	FRACTIONS
.X ± .05		± 1/64
.XX ± .01		ANGLES ± 0° 30'
.XXX ± .005		

CUT HERE GUARANTEED 2-66

REQ.	ITEM	PART NO.	DESCRIPTION	SYMBOL
	.052		THE TECHNICAL MATERIEL CORP.	
	STOCK SIZE		MAMARONECK, NEW YORK	
	ALUMINUM	#	COVER TRACK	
	MATERIAL	WEIGHT PER PC.		
	5052 H32			
	TYPE & TEMPER			
	#			
	HEAT TREAT. SPEC.			
	S-404 IRIDITE			
	FINISH & SPEC. NO.			

B	1	S404-IRIDITE WAS S101-CAUSTIC DIP	12-7-59	1001	P		EMN
A	1	REDRAWN	8/16/59		AB	WLC	WLC
ISSUE	ITEM	CHANGED FROM	DATE	CN. NO.	DRAFTS	CHECKER	ENG. APP.

TOLERANCES		SCALE	DRILL, PUNCH, COMMERCIAL STOCK SIZES AND MANUFACTURERS TOLERANCES ARE NOT INCLUDED.
ALL OTHERS	DEC. DIM. ± FRAC. DIM. ± Y64 ANGULAR DIM. ±	1/2	

MS-212 B

IF IT IS FOUND DESIRABLE TO CHANGE ANY TOLERANCE OR OTHER DETAIL SPECIFIED ON THIS DRAWING NOTIFY THE PURCHASER PROMPTLY.

MAXIMUM ALLOWABLE TOLERANCES HAVE BEEN DETERMINED AND DEVIATIONS WILL BE CAUSE FOR REJECTION. REMOVE ALL BURRS AND SHARP EDGES

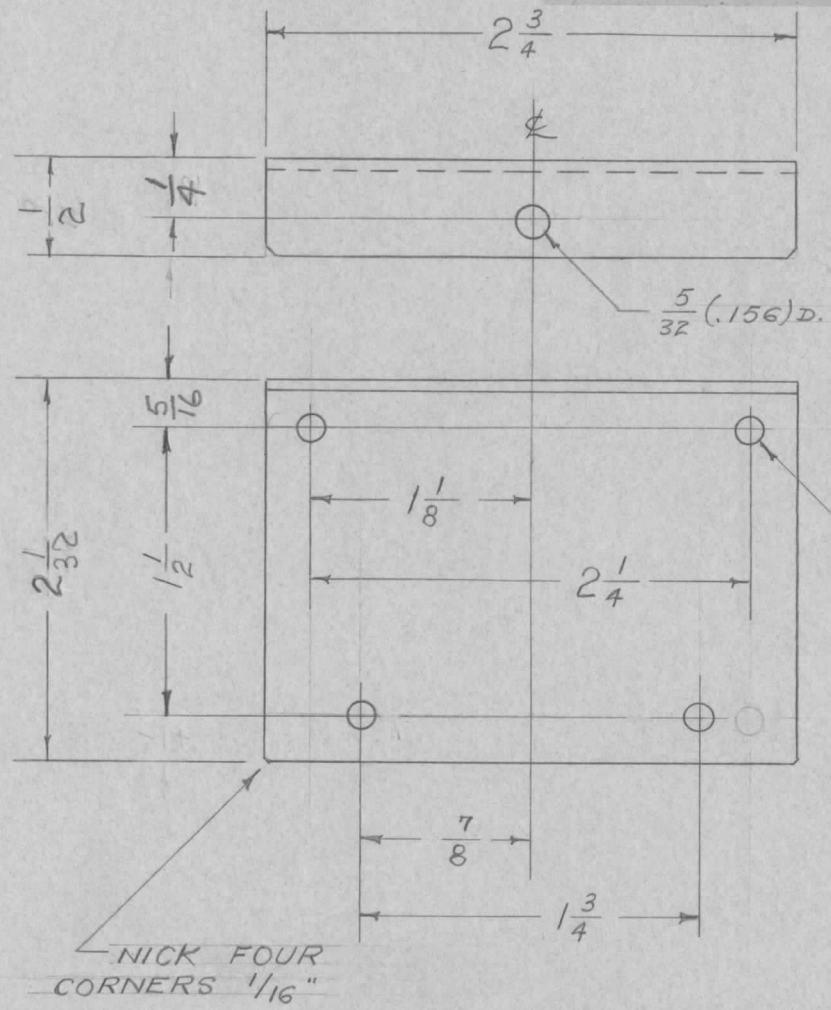
UNLESS OTHERWISE SPECIFIED  
DIMENSIONS ARE IN INCHES AND INCLUDE  
CHEMICALLY APPLIED OR PLATED FINISHES

DECIMALS	FRACTIONS
X ± .05	± 1/64
XX ± .01	ANGLES
XXX ± .005	± 0° 30'

CUT HERE  
GUARANTEED  
2-66

MS-213 C

REQ. PER UNIT	USED ON			
	MODEL	PROJECT NO.	ASS'Y. NO.	DATE
2	XFK		A-708	8-16-57



REQ.	ITEM	PART NO.	DESCRIPTION	SYMBOL
		.064	THE TECHNICAL MATERIEL CORP.	
		STOCK SIZE	MAMARONECK. NEW YORK	
	ALUMINUM	#	PATCH CORD	
	MATERIAL	WEIGHT PER PC.	COVER SIDES	
	5052	H32		
	TYPE & TEMPER		MS 8-16-55	
			DRAWN	ELEC. DES. APP.
			CHECKED	FINAL APPROVAL
		S-404 IRIDITE		MS-213 C
		FINISH & SPEC. NO.		

ISSUE	ITEM	CHANGED FROM	DATE	CN. NO.	DRAFTS	CHECKER	ENG. APP.
C	1	S404 IRIDITE WAS SID1 CAUSTIC DIP	12-7 59	1001	UP		EMN
B	1	REDRAWN NO CHANGE	8/16/55	2	MS	JACK	WOL

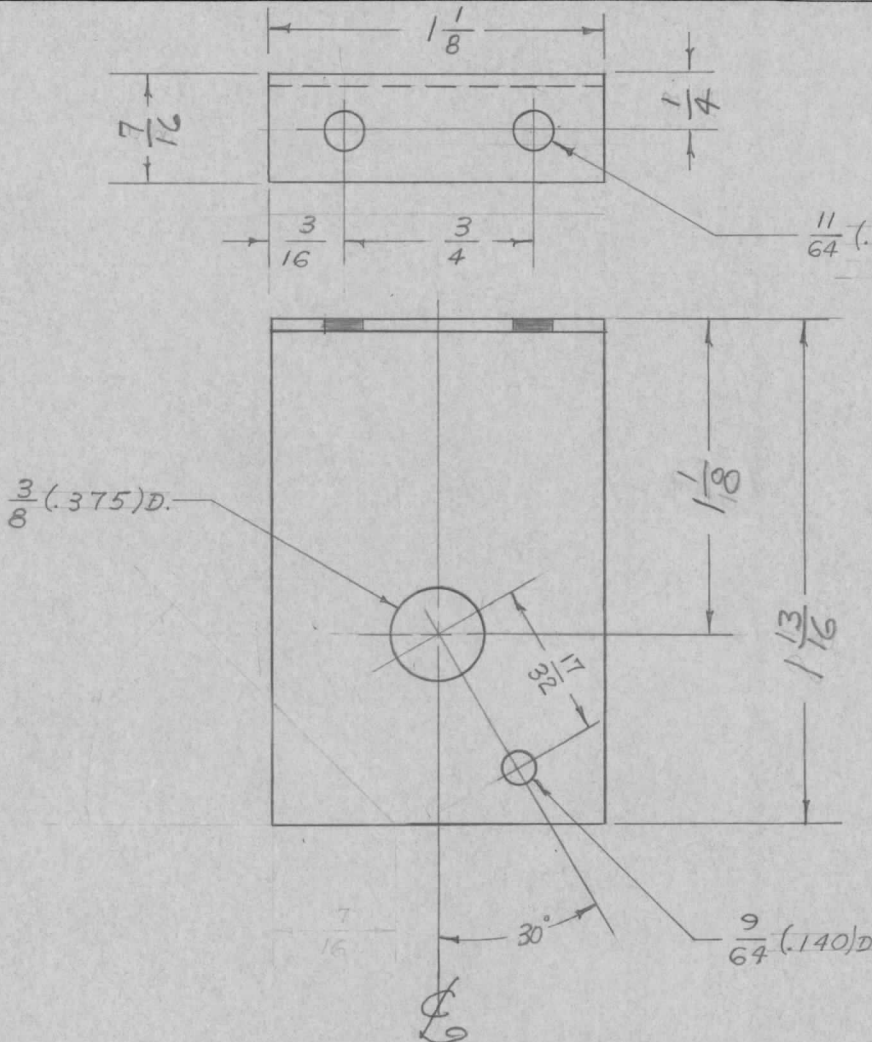
TOLERANCES	SCALE
ALL OTHERS DEC. DIM. ± FRAC. DIM. ± 1/64 ANGULAR DIM. ±	DRILL, PUNCH, COMMERCIAL STOCK SIZES AND MANUFACTURERS TOLERANCES ARE NOT INCLUDED.

IF IT IS FOUND DESIRABLE TO CHANGE ANY TOLERANCE OR OTHER DETAIL SPECIFIED ON THIS DRAWING NOTIFY THE PURCHASER PROMPTLY.

MAXIMUM ALLOWABLE TOLERANCES HAVE BEEN DETERMINED AND DEVIATIONS WILL BE CAUSE FOR REJECTION. REMOVE ALL BURRS AND SHARP EDGES

MS-215 C

REQ. PER UNIT	USED ON			
	MODEL	PROJECT NO.	ASS'Y. NO.	DATE
1	XFK			7-30-51



REQ.	ITEM	PART NO.	DESCRIPTION	SYMBOL
		.064	THE TECHNICAL MATERIEL CORP. MAMARONECK. NEW YORK	
		STOCK SIZE		
	ALUMINUM	#	S2D MOUNTING PLATE	
	MATERIAL	WEIGHT PER PC.		
	5052 B H32			
	TYPE & TEMPER		AD. 8-16-55	
			DRAWN	ELEC. DES. APP. MECH. DES. APP.
			HEAT TREAT. SPEC.	
	S-404 IRIDITE		CHECKED	FINAL APPROVAL
	FINISH & SPEC. NO.			MS-215 C

ISSUE	ITEM	CHANGED FROM	DATE	CN. NO.	DRAFTS	CHECKER	ENG. APP.
C	1	S404 IRIDITE WAS S101 CAUSTIC DIP	12-7-59	1001	P		EMN
B	1	REDRAWN TO 4/16/55	8/16/55	2	AB	JAW	WJC

TOLERANCES	SCALE
DEC. DIM. ± FRAC. DIM. ± $\frac{1}{64}$ ANGULAR DIM. ± 1°	DRILL, PUNCH, COMMERCIAL STOCK SIZES AND MANUFACTURERS TOLERANCES ARE NOT INCLUDED.

IF IT IS FOUND DESIRABLE TO CHANGE ANY TOLERANCE OR OTHER DETAIL SPECIFIED ON THIS DRAWING NOTIFY THE PURCHASER PROMPTLY.

MS-216 E

MAXIMUM ALLOWABLE TOLERANCES HAVE BEEN DETERMINED AND DEVIATIONS WILL BE CAUSE FOR REJECTION. REMOVE ALL BURRS AND SHARP EDGES

REQ. PER UNIT

USED ON

1

MODEL

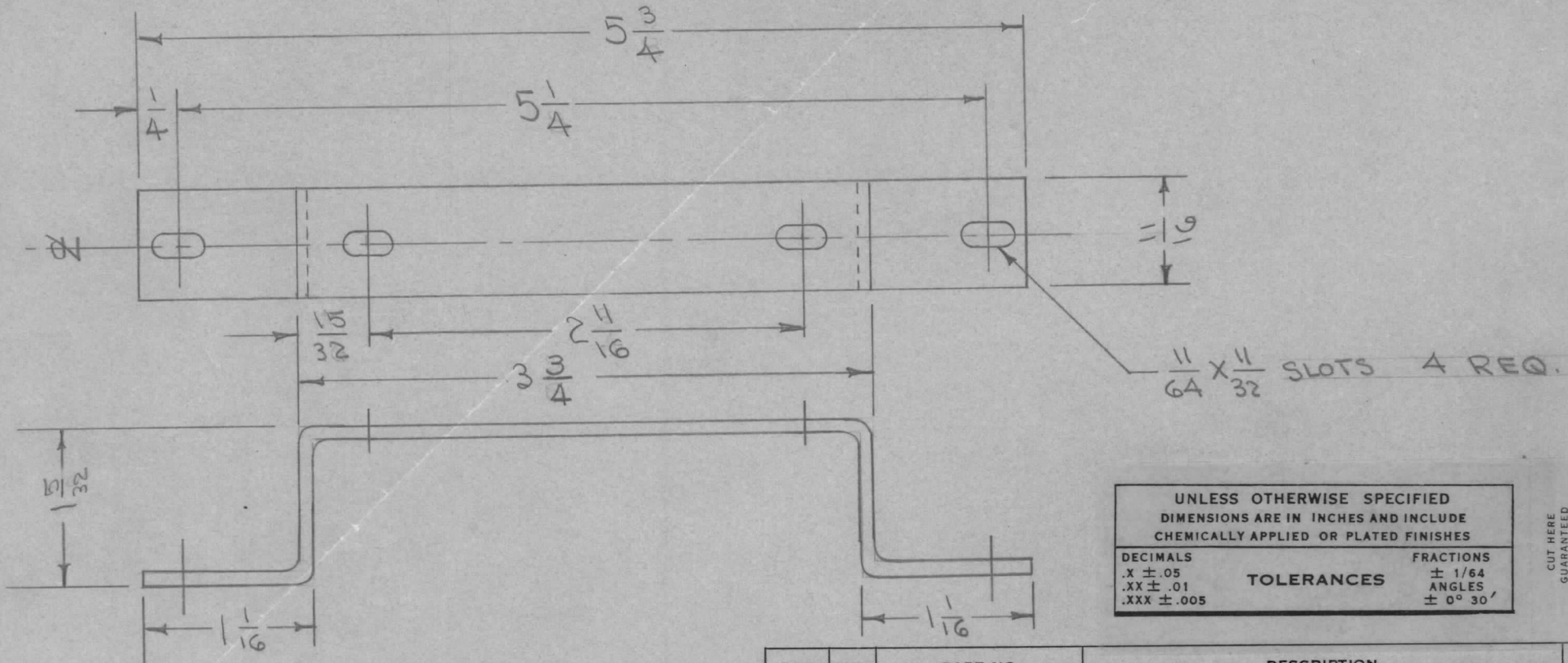
XFK

PROJECT NO.

ASS'Y. NO.

A-679

DATE



UNLESS OTHERWISE SPECIFIED DIMENSIONS ARE IN INCHES AND INCLUDE CHEMICALLY APPLIED OR PLATED FINISHES

DECIMALS	TOLERANCES	FRACTIONS
.X ± .05		± 1/64
.XX ± .01		ANGLES
.XXX ± .005		± 0° 30'

CUT HERE GUARANTEED 2-66

ISSUE	ITEM	CHANGED FROM	DATE	CN. NO.	DRAFTS	CHECKER	ENG. APP.
E	1	S404-IRIDITE WAS S101-CAUSTIC DIP	12-7-59	1001	VP		EMN
D	1	DIM. CHG 3 3/4 WAS 3 5/8	8/7/58	417	ase	FADE	WDE
C	1	COMPLETE REVISION	5/28/56	3	cas	FADE	WDE
B	3	1/8 WAS 1	7-23-54	2	FADE	WDE	WDE
A	2	DIMENSIONING CHANGED	6/3/54	1	C.D.D.	FADE	WDE
	1	REDRAWN					

REQ.	ITEM	PART NO.	DESCRIPTION	SYMBOL
		.064	THE TECHNICAL MATERIEL CORP.	
		STOCK SIZE	MAMARONECK, NEW YORK	
		ALUMINUM	BRACKET, CONDENSER	
		MATERIAL	XFK	
		WEIGHT PER PC.		
		5052-H32		
		TYPE & TEMPER	C.D.D. 6/9/54	
			A. J. J.	
			DRAWN	
			ELEC. DES. APP.	
			MECH. DES. APP.	
			CHECKED	
			FINAL APPROVAL	
		S404-IRIDITE	MS-216	E
		FINISH & SPEC. NO.		

TOLERANCES

SCALE

ALL OTHERS

DEC. DIM. ±  
FRAC. DIM. ± 1/64  
ANGULAR DIM. ±

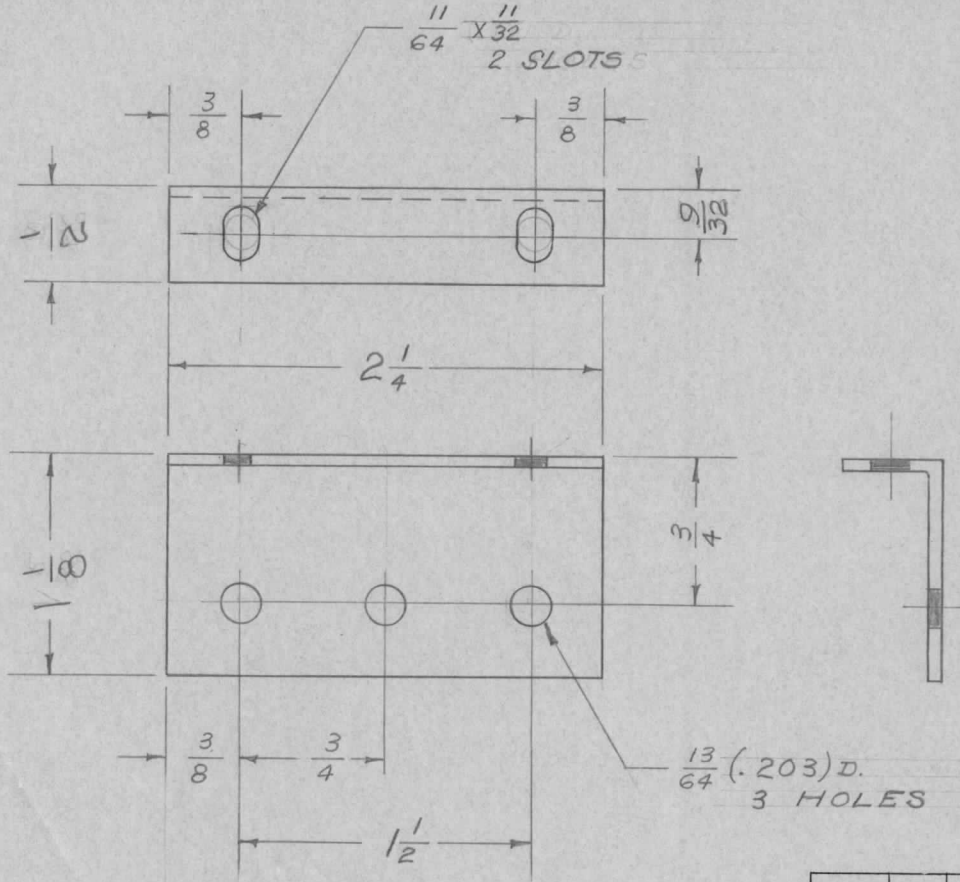
DRILL, PUNCH, COMMERCIAL STOCK SIZES AND MANUFACTURERS TOLERANCES ARE NOT INCLUDED.

IF IT IS FOUND DESIRABLE TO CHANGE ANY TOLERANCE OR OTHER DETAIL SPECIFIED ON THIS DRAWING NOTIFY THE PURCHASER PROMPTLY.

MS-218 B

MAXIMUM ALLOWABLE TOLERANCES HAVE BEEN DETERMINED AND DEVIATIONS WILL BE CAUSE FOR REJECTION. REMOVE ALL BURRS AND SHARP EDGES

REQ. PER UNIT	USED ON			
	MODEL	PROJECT NO.	ASS'Y. NO.	DATE
2	XFK			8-6-51



REQ.	ITEM	PART NO.	DESCRIPTION	SYMBOL
		.051	THE TECHNICAL MATERIEL CORP.	
		STOCK SIZE	MAMARONECK. NEW YORK	
		ALUMINUM	RESISTOR BRACKET	
		MATERIAL		
		WEIGHT PER PC.		
		5052 S H 32		
		TYPE & TEMPER	16 8-16-55	
			DRAWN	ELEC. DES. APP.
			CHECKED	MECH. DES. APP.
		HEAT TREAT. SPEC.		
		5-101 CAUSTIC DIP		
		5-107 LACQUER		
		FINISH & SPEC. NO.		

B	2	9/32 WAS 5/16	3-28-57	2	SC.	JAD	all
A	1	SLOTS WERE HOLES	8/16/51	1	16	JAD	we
		REDRAWN					
ISSUE	ITEM	CHANGED FROM	DATE	CN. NO.	DRAFTS	CHECKER	ENG. APP.
TOLERANCES			SCALE				
ALL OTHERS	DEC. DIM. $\pm$ FRAC. DIM. $\pm \frac{1}{64}$ ANGULAR DIM. $\pm$		DRILL, PUNCH, COMMERCIAL STOCK SIZES AND MANUFACTURERS TOLERANCES ARE NOT INCLUDED.				

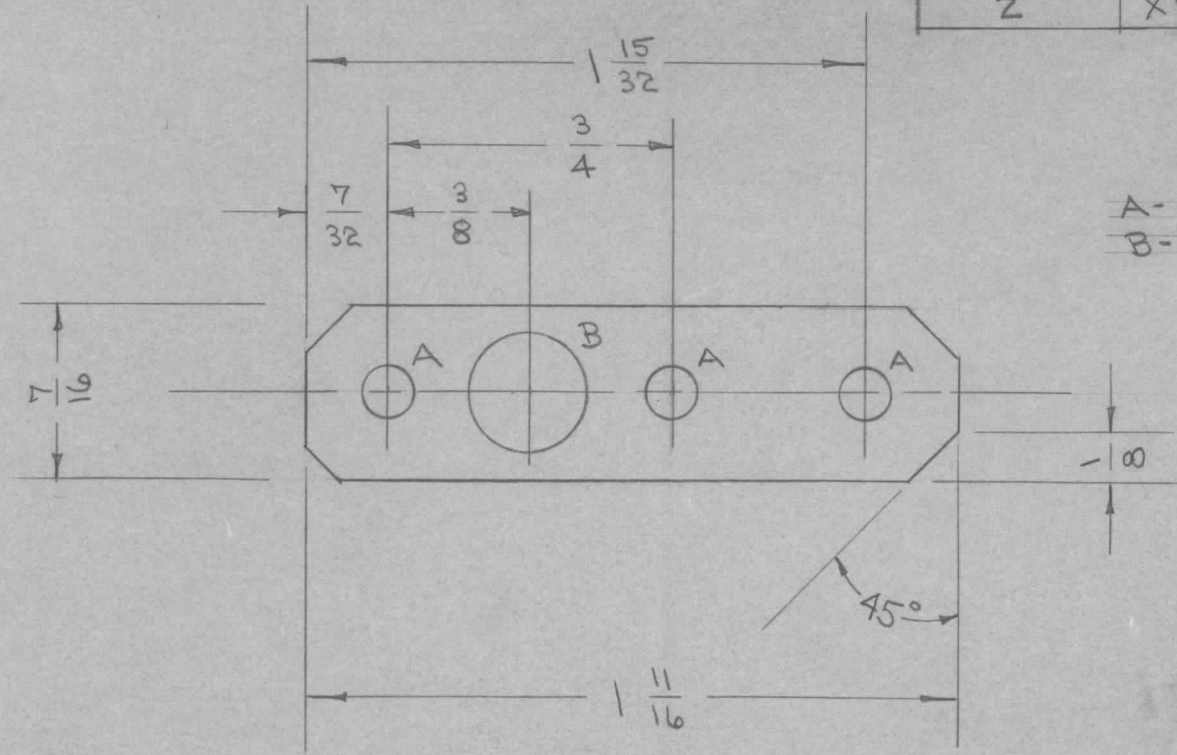
MS-218 B

IF IT IS FOUND DESIRABLE TO CHANGE ANY TOLERANCE OR OTHER DETAIL SPECIFIED ON THIS DRAWING NOTIFY THE PURCHASER PROMPTLY.

MS-229 B

MAXIMUM ALLOWABLE TOLERANCES HAVE BEEN DETERMINED AND DEVIATIONS WILL BE CAUSE FOR REJECTION. REMOVE ALL BURRS AND SHARP EDGES

USED ON				
AMT. PER UNIT	MODEL	PROJECT NO.	ASS'Y. NO.	DATE
2	XFK		A-355	2-5-53



A - 1/8 (.125) D. 3 HOLES REQ.  
 B - 5/16 (.312) D. 1 HOLE REQ.

UNLESS OTHERWISE SPECIFIED DIMENSIONS ARE IN INCHES AND INCLUDE CHEMICALLY APPLIED OR PLATED FINISHES

DECIMALS	TOLERANCES	FRACTIONS
.X ± .05		± 1/64
.XX ± .01		ANGLES ± 0° 30'
.XXX ± .005		

REQ.	ITEM	PART NO.	DESCRIPTION	SYMBOL
		.032	THE TECHNICAL MATERIEL CORP.	
		STOCK SIZE	MAMARONECK, NEW YORK	
		ALUMINUM	LINK, SHAFT	
		MATERIAL		
		WEIGHT PER PC.		
		24 ST	C.I.D.D. 2-5-53	
		TYPE & TEMPER	A.S.J.	
			DRAWN	ELEC. DES. APP. MECH. DES. APP.
			CHECKED	FINAL APPROVAL
		HEAT TREAT. SPEC.		
		S404 IRIDITE		
		FINISH & SPEC. NO.		

B	1	"A" WAS 9/64 (.140) D.	12/23/53	1769	AB	JUE	EMN
A	1	S404-IRIDITE WAS S101-CAUSTIC DIP	12/7/53	1001	CP		EMN
ISSUE	ITEM	CHANGED FROM	DATE	CN. NO.	DRAFTS	CHECKER	ENG. APP.
TOLERANCES		SCALE 1/16"					
ALL OTHERS	DEC. DIM. ±	DRILL, PUNCH, COMMERCIAL STOCK SIZES AND MANUFACTURERS TOLERANCES ARE NOT INCLUDED.					
	FRAC. DIM. ± 1/64						
	ANGULAR DIM. ±						

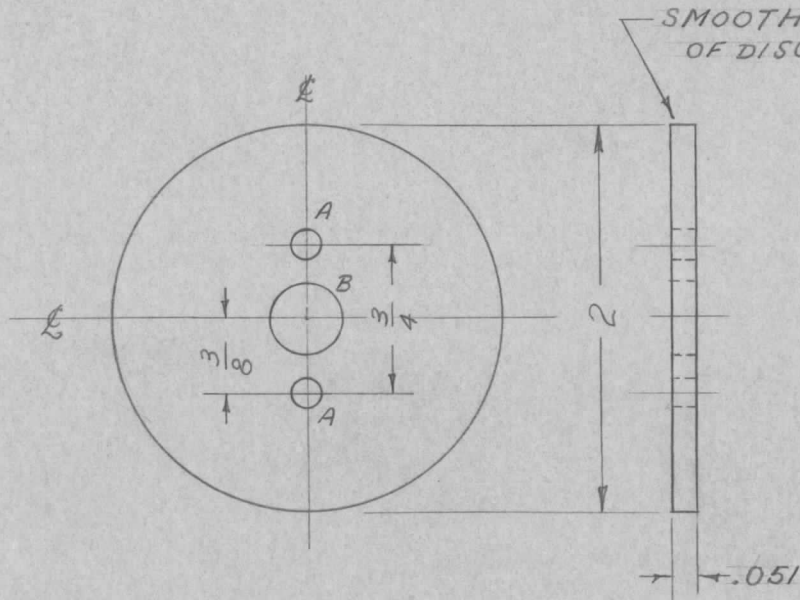
MS-229 B

IF IT IS FOUND DESIRABLE TO CHANGE ANY TOLERANCE OR OTHER DETAIL SPECIFIED ON THIS DRAWING NOTIFY THE PURCHASER PROMPTLY.

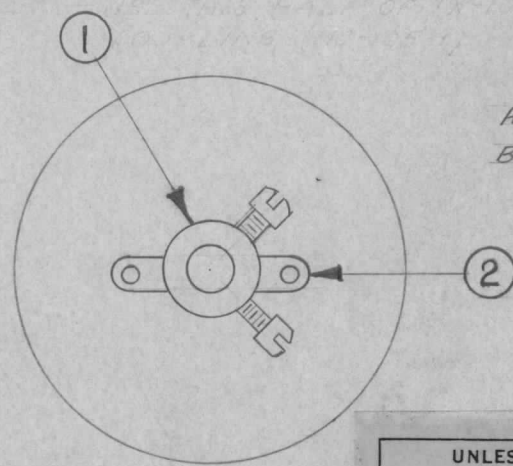
MAXIMUM ALLOWABLE TOLERANCES HAVE BEEN DETERMINED AND DEVIATIONS WILL BE CAUSE FOR REJECTION. REMOVE ALL BURRS AND SHARP EDGES

MS-230 C

REQ. PER UNIT	USED ON			
	MODEL	PROJECT NO.	ASS'Y. NO.	DATE
1	XFK		A-679	4-13-55



MACHINING  
MS230-1



ASSEMBLY  
MS230-2

A - 9/64 (.140) D. 2 HOLES REQ.  
B - 3/8 (.375) D. 1 HOLE REQ.

UNLESS OTHERWISE SPECIFIED DIMENSIONS ARE IN INCHES AND INCLUDE CHEMICALLY APPLIED OR PLATED FINISHES		
DECIMALS	TOLERANCES	FRACTIONS
.X ± .05		± 1/64
.XX ± .01		ANGLES
.XXX ± .005		± 0° 30'

NOTE:  
2" DISC TO BE FORMED WITH SPECIAL PUNCH.

REQ.	ITEM	PART NO.	DESCRIPTION	SYMBOL
2	2	EY100-1	EYELET	
1	1	MC105-1	COUPLING, SHAFT	
.051 THK.			THE TECHNICAL MATERIEL CORP.	
STOCK SIZE			MAMARONECK, NEW YORK	
ALUMINUM			LOCKING DISC	
MATERIAL WEIGHT PER PC.			XFK	
525-H32			PB	
TYPE & TEMPER			DRAWN	
#			ELEC. DES. APP.	
HEAT TREAT. SPEC.			MECH. DES. APP.	
S404 IRIDITE			CHECKED	
FINISH & SPEC. NO.			FINAL APPROVAL	
			MS-230 C	

ISSUE	ITEM	CHANGED FROM	DATE	CN. NO.	DRAFTS	CHECKER	ENG. APP.
C	2	MS230-1, -2 ADD. NOTES UPD.	11.10.64	12849	hb	Jan	D
B	1	S404-IRIDITE WAS S101-CAUSTIC DIP	12-7-59	1001	P		EMN
A	1	REDRAWN - B-HOLE WAS 5/16	4-19-58	1	P.B.	Jade	W

TOLERANCES		SCALE
ALL OTHERS	DEC. DIM. ± FRAC. DIM. ± ANGULAR DIM. ±	DRILL, PUNCH, COMMERCIAL STOCK SIZES AND MANUFACTURERS TOLERANCES ARE NOT INCLUDED.



IF IT IS FOUND DESIRABLE TO CHANGE ANY TOLERANCE OR OTHER DETAIL SPECIFIED ON THIS DRAWING NOTIFY THE PURCHASER PROMPTLY.

MAXIMUM ALLOWABLE TOLERANCES HAVE BEEN DETERMINED AND DEVIATIONS WILL BE CAUSE FOR REJECTION. REMOVE ALL BURRS AND SHARP EDGES

UNLESS OTHERWISE SPECIFIED  
DIMENSIONS ARE IN INCHES AND INCLUDE  
CHEMICALLY APPLIED OR PLATED FINISHES

DECIMALS	FRACTIONS
.X ± .05	± 1/64
.XX ± .01	ANGLES
.XXX ± .005	± 0° 30'

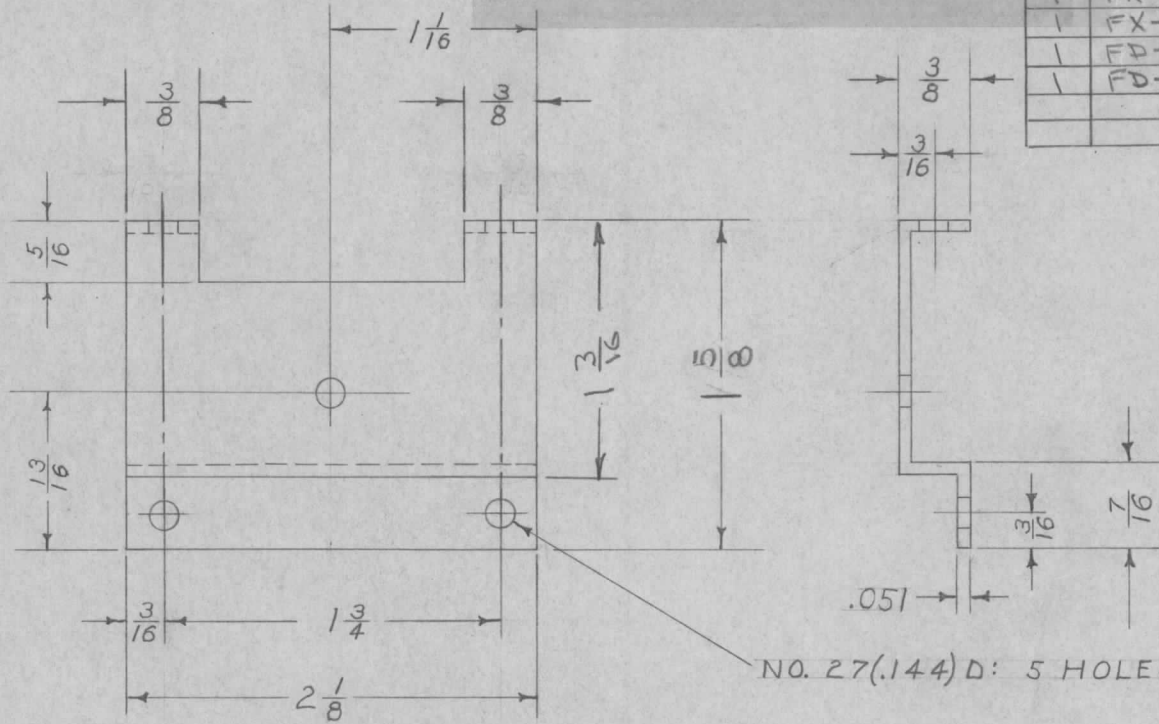
TOLERANCES

ALL DIMENSIONS  
UNLESS OTHERWISE  
SPECIFIED

MS-231 D

USED ON

	MODEL	PROJECT NO.	ASS'Y. NO.	DATE
1	FX-130	170	A-780	11-19-54
1	FX-140	170	A-781	11-19-54
1	FD-116	170	A-750	11-19-54
1	FD-117	170	A-751	11-19-54



ALL BENDS - 90°

BLANK SIZE  
2 1/8 x 2 2/64

NO. 27(.144) D: 5 HOLES REQ'D

REQ.	ITEM	PART NO.	DESCRIPTION	SYMBOL
		.051	THE TECHNICAL MATERIEL CORP. MAMARONECK, NEW YORK	BRACKET, FILTER
		STOCK SIZE		
		ALUMINUM		
		MATERIAL	WEIGHT PER PC.	
		52S - H32		
		TYPE & TEMPER	F.M. 7-16-53	
		HEAT TREAT. SPEC.	DRAWN	ELEC. DES. APP.
			CHECKED	FINAL APPROVAL
		FINISH & SPEC. NO.	MS-231 D	

D	1	S404 IRIDITE WAS S101 CAUSTIC DIP	12-7 59	1001	P	EMN
C	1	DIMENSION REMOVED MODEL INFORM.	9-4-53	3	16	JAD M.H.S.
B	1	1 5/8 WAS 1 1/16	8-21-53	2	CDD	M.H.S.
A	1	1 1/16 WAS 1 7/16	7/16/53	1	JAD	Pgy
ISSUE	ITEM	CHANGED FROM	DATE	CN. NO.	DRAFTS CHECKER	ENG. APP.

TOLERANCES

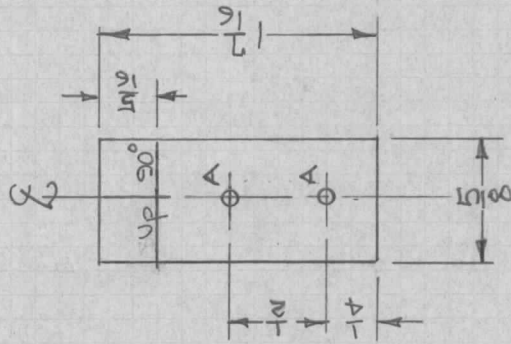
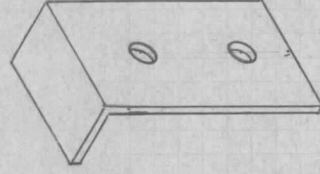
SCALE FULL

ALL  
OTHERS

DEC. DIM. ±  
FRAC. DIM. ± 1/64  
ANGULAR DIM. ±

DRILL, PUNCH, COMMERCIAL STOCK  
SIZES AND MANUFACTURERS  
TOLERANCES ARE NOT INCLUDED.

MS-234



A = 3/16 D

Blank Size 5/8 x 1 7/16

UNLESS OTHERWISE SPECIFIED  
DIMENSIONS ARE IN INCHES AND INCLUDE  
CHEMICALLY APPLIED OR PLATED FINISHES

DECIMALS	FRACTIONS
.X ± .05	± 1/64
.XX ± .01	ANGLES
.XXX ± .005	± 0° 30'

CUT HERE  
2-66  
GUARANTEED

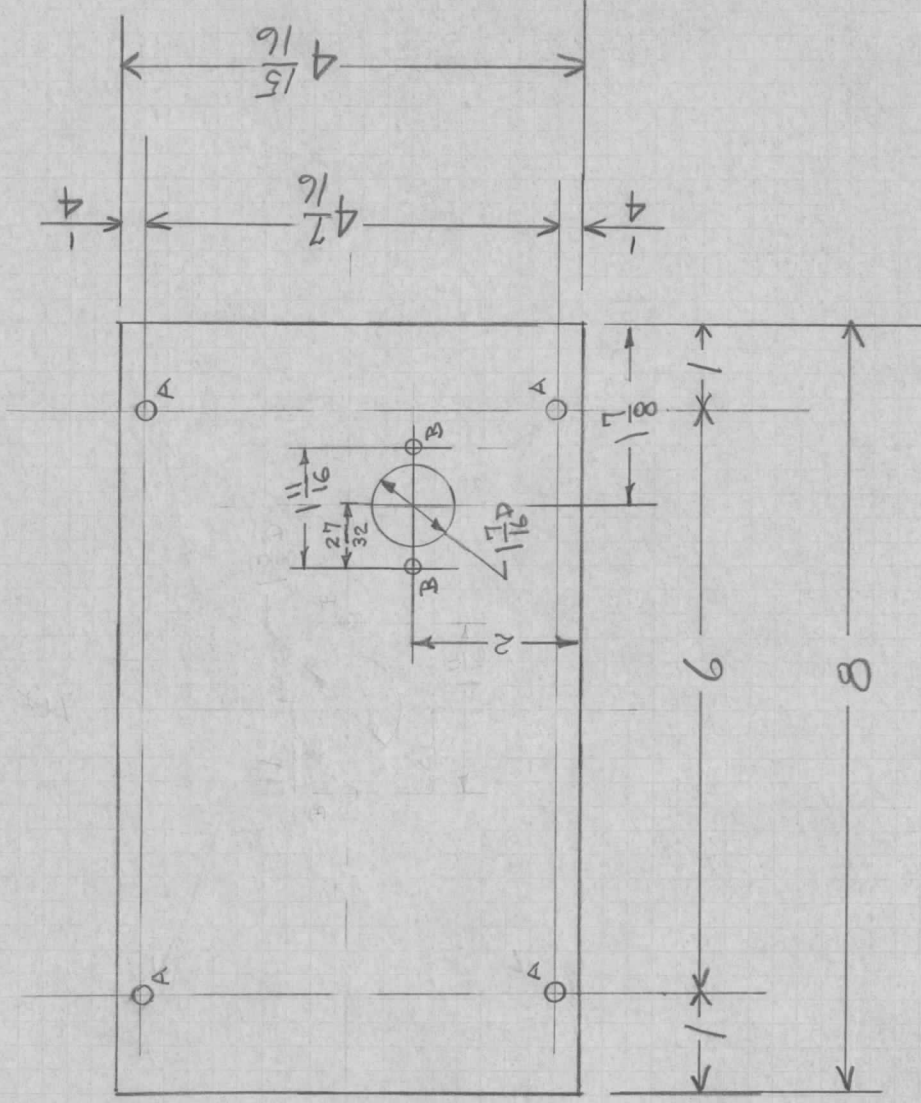
SUPERCEDES  
AMS 203

Material: 051 Aluminum 525/4H		Finish: Alkali Etch & Lacquer	Req. 2 Per
DATE 9-7-51	COVER BRACKET		
DRN. JAD	THE TECHNICAL MATERIEL CORPORATION		
CHKD. PJB	MAMARONECK, NEW YORK		
APPD. PJB	SHEET	OF	NO. MS-234

Model DCU

NOTE: STAMP COVER.

CAUTION  
REMOVE JUMPER ACROSS R1  
FOR 220 VOLTS AC INPUT



A = 1/16" D - 4 REQ.  
B = 5/32" D - 2 REQ.

USE: .031 24ST ALUM  
ALKALI ETCH & LACQUER  
ONE PIECE PER UNIT  
MAT SIZE: 4 15/16 X 8

UNLESS OTHERWISE SPECIFIED DIMENSIONS ARE IN INCHES AND INCLUDE CHEMICALLY APPLIED OR PLATED FINISHES	
DECIMALS	FRACTIONS
.X ± .05	± 1/64
.XX ± .01	ANGLES
.XXX ± .005	± 0° 30'

CUT HERE  
2-66  
GUARANTEED

SUPERCEDES AMS 089

SYM	DESCRIPTION	DATE	APP
A	JJ-130 MFG. HOLES ADDED	3/3/54	AJL/UR

DATE 4-13-51

DRN. P.B.

CHKD. JAW

APPD. *[Signature]*

COVER PLATE  
POWER CONTROL PANEL  
MODEL DCP

THE TECHNICAL MATERIEL  
CORPORATION  
MAMARONECK, NEW YORK

SHEET

OF

NO. MS-241A

MS-241

IF IT IS FOUND DESIRABLE TO CHANGE ANY TOLERANCE OR OTHER DETAIL SPECIFIED ON THIS DRAWING NOTIFY THE PURCHASER PROMPTLY.

UNLESS OTHERWISE SPECIFIED  
DIMENSIONS ARE IN INCHES AND INCLUDE  
CHEMICALLY APPLIED OR PLATED FINISHES

MS-247 B

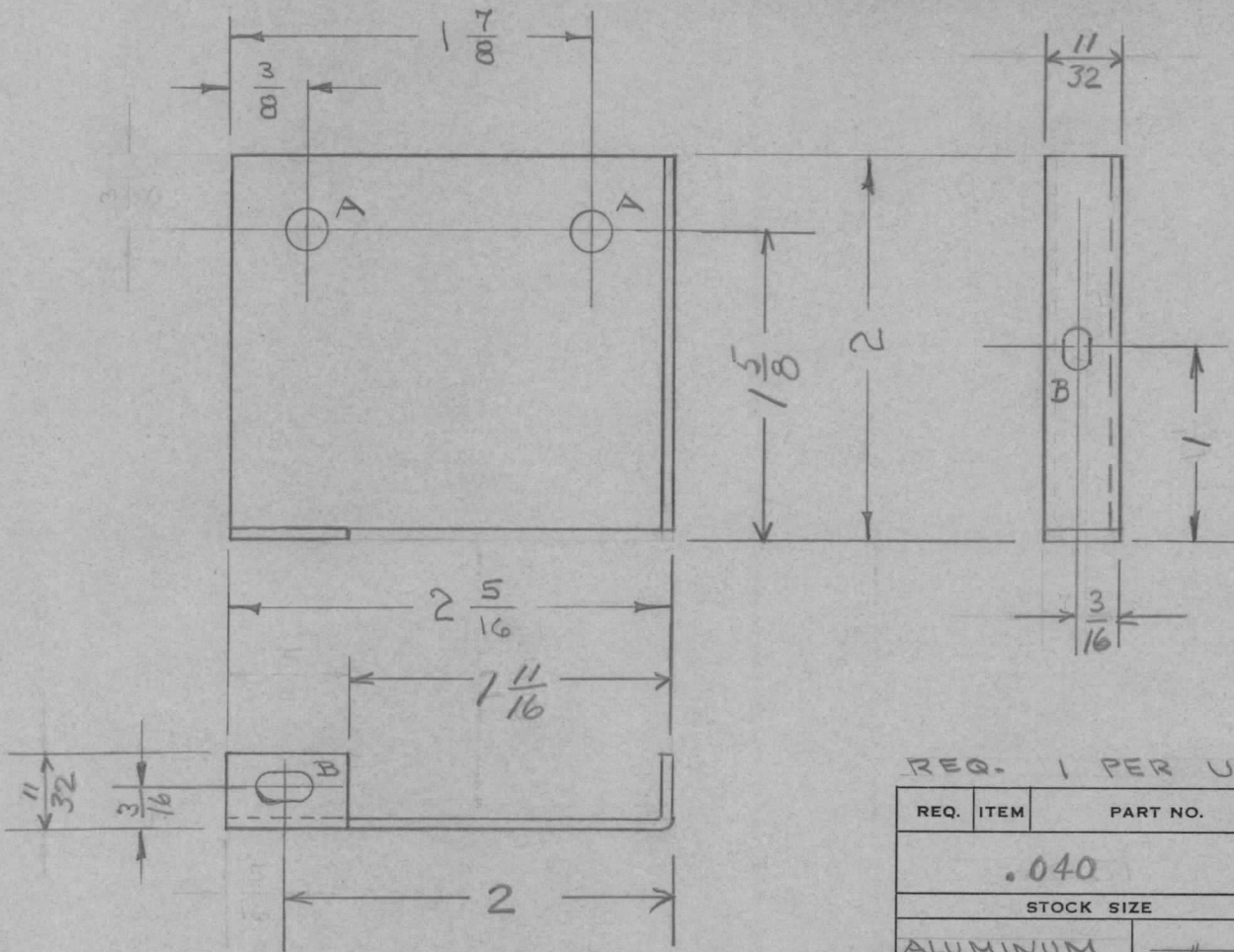
MAXIMUM ALLOWABLE TOLERANCES HAVE BEEN DETERMINED AND DEVIATIONS WILL BE CAUSE FOR REJECTION.  
REMOVE ALL BURRS AND SHARP EDGES

DECIMALS	FRACTIONS
.X ± .05	± 1/64
.XX ± .01	ANGLES
.XXX ± .005	± 0° 30'

CUT HERE  
GUARANTEED  
2-66

USED ON

MODEL	PROJECT NO.	ASS'Y. NO.	DATE
DVM	199		6-8-53



A - 7/32 (.218) D. 2 HOLES REQ.  
B - 9/64 x 9/32 2 SLOTS REQ.

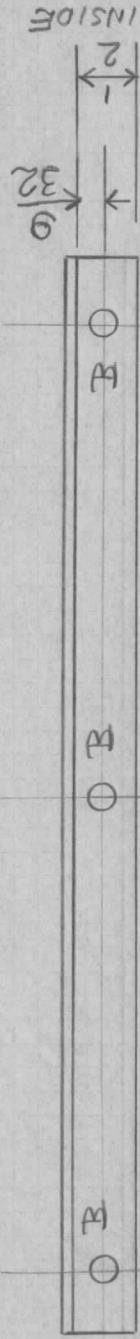
REQ. 1 PER UNIT.

REQ.	ITEM	PART NO.	DESCRIPTION	SYMBOL
		.040	THE TECHNICAL MATERIEL CORP.	
		STOCK SIZE	MAMARONECK, NEW YORK	
		ALUMINUM	SWITCH SHIELD	
		MATERIAL	WEIGHT PER PC.	
		52 S H32		
		TYPE & TEMPER	CD.D. 6-8-53	
		HEAT TREAT. SPEC.	DRAWN	ELEC. DES. APP.
		FINISH & SPEC. NO.	CHECKED	MECH. DES. APP.
			FINAL APPROVAL	
			MS-247	B

B	1	5404-IRIDITE WAS 5101-CAUSTIC DIP	12-7 59	1001	UP		EMN
A	1	REDRAWN-DIM. CHGD.	6-8-53	1	C.D.D.		
ISSUE	ITEM	CHANGED FROM	DATE	CN. NO.	DRAFTS	CHECKER	ENG. APP.

TOLERANCES		SCALE	#
ALL OTHERS	DEC. DIM. ± FRAC. DIM. ± 1/16 ANGULAR DIM. ±	DRILL, PUNCH, COMMERCIAL STOCK SIZES AND MANUFACTURERS TOLERANCES ARE NOT INCLUDED.	

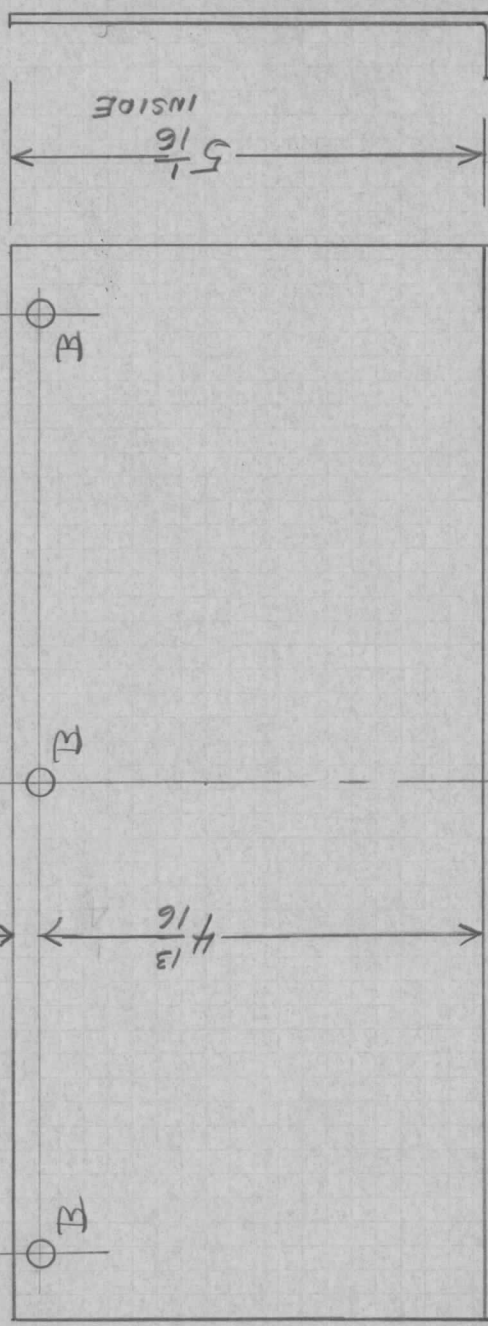
MS-261



6 1/4

4

13/16



5 1/16

Φ

14

1/2  
INSIDE

UNLESS OTHERWISE SPECIFIED DIMENSIONS ARE IN INCHES AND INCLUDE CHEMICALLY APPLIED OR PLATED FINISHES	
DECIMALS	FRACTIONS
X ± .05	± 1/64
.XX ± .01	ANGLES
.XXX ± .005	± 0° 30'

CUT HERE  
2-69  
GUARANTEED

B = 11/64 HOLE - 6 HOLES REQ'D

MAT: 5 19 x 14  
32

USE: .051 528 H32 ALUMINUM  
ONE PIECE PER UNIT  
ALKALI ETCH & LACQUER

SUPERCEDES  
AMS084

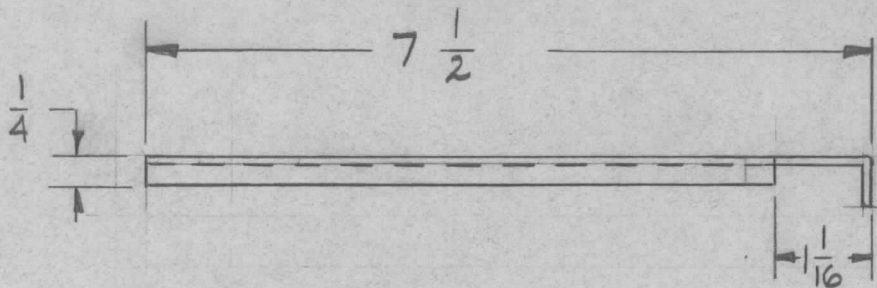
DATE 3-22-51  
 DRN. P.B.  
 CHKD. JBY  
 APPD. JH

BOTTOM COVER  
 MONITOR SPEAKER  
 MODEL LSP

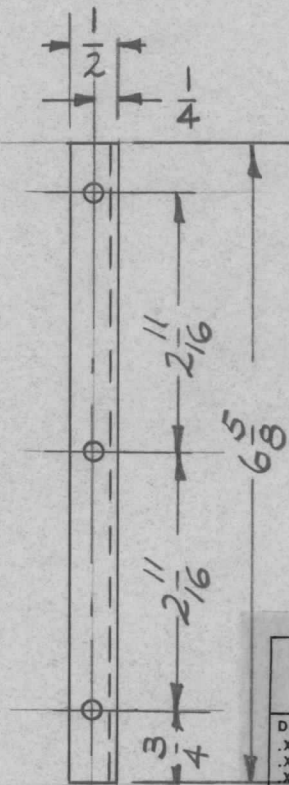
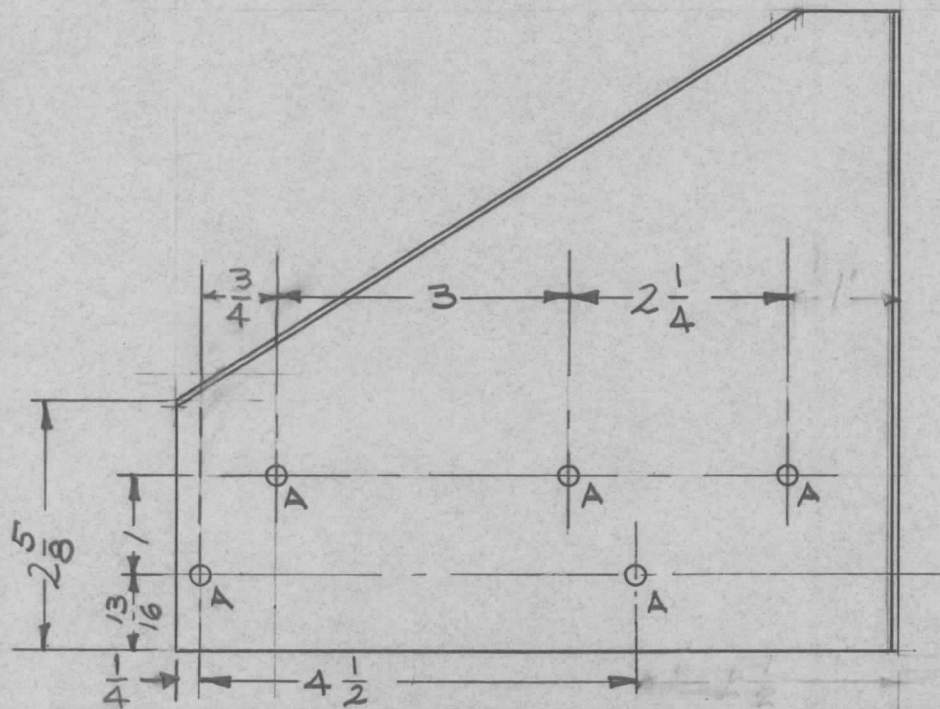
THE TECHNICAL MATERIEL  
 CORPORATION  
 MAMARONECK, NEW YORK

SHEET OF NO. MS-261

REQ. PER UNIT	USED ON			MS-262
	MODEL	ASS'Y. NO.	DATE	
1	LSP		4-13-60	



A ~ 13/64 (.203) D, 8 REQ.



UNLESS OTHERWISE SPECIFIED DIMENSIONS ARE IN INCHES AND INCLUDE CHEMICALLY APPLIED OR PLATED FINISHES		
DECIMALS	TOLERANCES	FRACTIONS
.X ± .05		± 1/64
.XX ± .01		ANGLES
.XXX ± .005		± 0° 30'

REQ.	ITEM	PART NO.	DESCRIPTION			SYMBOL	
		.051	THE TECHNICAL MATERIEL CORP.				
		STOCK SIZE	MAMARONECK, NEW YORK				
		ALUMINUM	RIGHT SIDE PLATE				
		MATERIAL					
ISSUE	ITEM	CHANGED FROM	DATE	CH. NO.	DRAFTS	CHECKER	ENG. APP.
TOLERANCES			SCALE: HALF				
DEC. DIM. ±			MAXIMUM ALLOWABLE TOLERANCES HAVE BEEN DETERMINED AND ANY DEVIATIONS WILL BE CAUSE FOR REJECTION. REMOVE ALL BURRS AND SHARP EDGES				
FRAC. DIM. ±							
ANGULAR DIM. ±							
TYPE & TEMPER		HEAT TREAT. SPEC.	DRAWN	CHECKED	FINAL APPROVAL		
S404-YEL. IRIDITE					MS-262		
FINISH & SPEC. NO.			ELEC. DES. APP.	MECH. DES. APP.			

IF IT IS FOUND DESIRABLE TO CHANGE ANY TOLERANCE OR OTHER DETAIL SPECIFIED ON THIS DRAWING NOTIFY THE PURCHASER PROMPTLY.

MAXIMUM ALLOWABLE TOLERANCES HAVE BEEN DETERMINED AND DEVIATIONS WILL BE CAUSE FOR REJECTION. REMOVE ALL BURRS AND SHARP EDGES

UNLESS OTHERWISE SPECIFIED DIMENSIONS ARE IN INCHES AND INCLUDE CHEMICALLY APPLIED OR PLATED FINISHES

DECIMALS	TOLERANCES	FRACTIONS
.X ± .05		± 1/64
.XX ± .01		ANGLES ± 0° 30'
.XXX ± .005		

CUT HERE  
GUARANTEED  
R2-66

REQ.  
PER  
UNIT

USED ON

MODEL

PROJECT NO.

ASS'Y. NO.

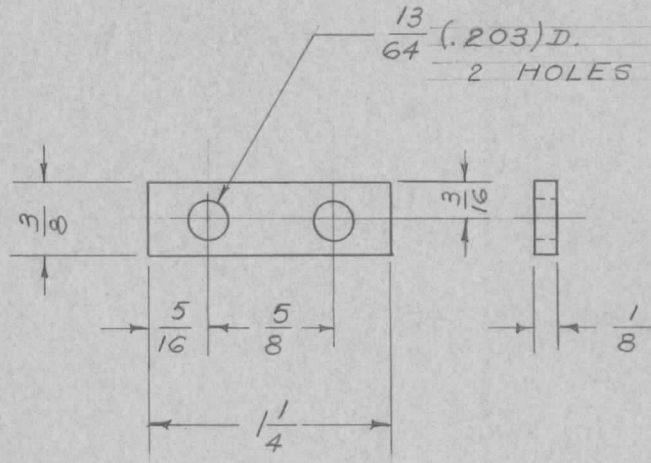
DATE

1

CFA

8-15-55

MS-267 A



REQ.	ITEM	PART NO.	DESCRIPTION	SYMBOL
			THE TECHNICAL MATERIEL CORP.	
			MAMARONECK. NEW YORK	
		STOCK SIZE		
		ALUMINUM	SUB CHASSIS SHIM FS CONVERTER	
		MATERIAL	WEIGHT PER PC.	
		52 S-H 32	CFA	
		TYPE & TEMPER	PA 8-15-55	WDC
		HEAT TREAT. SPEC.	DRAWN	ELEC. DES. APP. MECH. DES. APP.
		S404-IRIDITE	JAD	AJT
		FINISH & SPEC. NO.	CHECKED	FINAL APPROVAL
				MS-267 A

A	1	S404 IRIDITE WAS S101 CAUSTIC DIP	12-7 59	1001	VP	JAD	EMN
+	+	REDRAWN NO CHANGE	8-15-55	+	16	JAD	WDC
ISSUE	ITEM	CHANGED FROM	DATE	CN. NO.	DRAFTS	CHECKER	ENG. APP.
TOLERANCES			SCALE				
ALL OTHERS	DEC. DIM. ± FRAC. DIM. ± 1/64 ANGULAR DIM. ±		DRILL, PUNCH, COMMERCIAL STOCK SIZES AND MANUFACTURERS TOLERANCES ARE NOT INCLUDED.				

IF IT IS FOUND DESIRABLE TO CHANGE ANY TOLERANCE OR OTHER DETAIL SPECIFIED ON THIS DRAWING NOTIFY THE PURCHASER PROMPTLY.

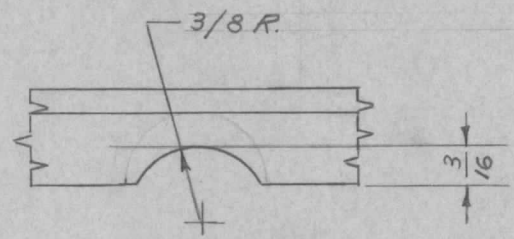
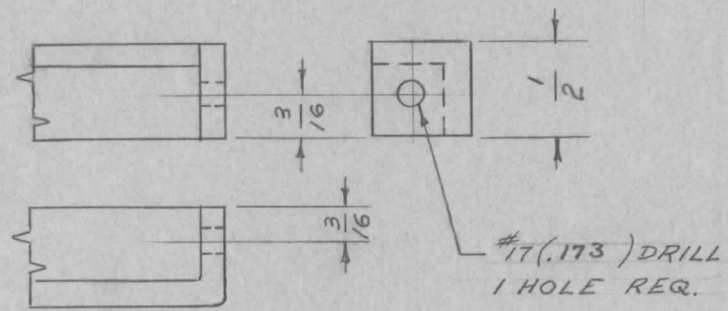
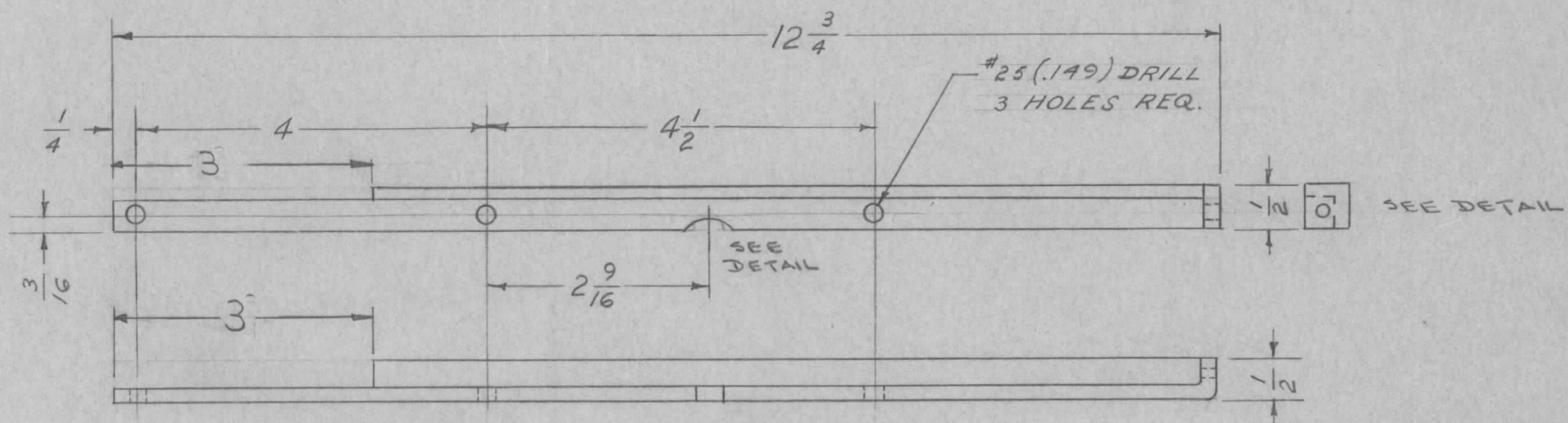
UNLESS OTHERWISE SPECIFIED DIMENSIONS ARE IN INCHES AND INCLUDE CHEMICALLY APPLIED OR PLATED FINISHES

MS-268 D

MAXIMUM ALLOWABLE TOLERANCES HAVE BEEN DETERMINED AND DEVIATIONS WILL BE CAUSE FOR REJECTION. REMOVE ALL BURRS AND SHARP EDGES

DECIMALS	TOLERANCES	FRACTIONS
.X ± .05		± 1/64
.XX ± .01		ANGLES ± 0° 30'
.XXX ± .005		

REQ. PER UNIT	USED ON			
	MODEL	PROJECT NO.	ASS'Y. NO.	DATE
1	CFA			3-24-55



REQ.	ITEM	PART NO.	DESCRIPTION	SYMBOL
	1/2 X 1/2 X 1/8		THE TECHNICAL MATERIEL CORP.	
	STOCK SIZE		MAMARONECK. NEW YORK	
	ALUMINUM	—#—	CROSS BRACE FS CONVERTER	
	MATERIAL	WEIGHT PER PC.	CFA	
	635 T5		P.B. 3-24-55	WDC
	TYPE & TEMPER		DRAWN	ELEC. DES. APP. MECH. DES. APP.
	HEAT TREAT. SPEC.		CHECKED	FINAL APPROVAL
	S404-IRIDITE			MS-268 <span style="border: 1px solid black; padding: 2px;">D</span>
	FINISH & SPEC. NO.			

ISSUE	ITEM	CHANGED FROM	DATE	CN. NO.	DRAFTS	CHECKER	ENG. APP.
D	1	3" CUTOUT ADDED	1-5-62	6171	RG		Key
C	1	S404-IRIDITE WAS 8101-CAUSTIC DIP	12-7-53	1001	UP		EMN
-4	-4	REDRAWN-NO CHANGE	3-24-55	-4	P.B.	FADE	JDC

TOLERANCES	SCALE
DEC. DIM. ± FRAC. DIM. ± 1/64 ANGULAR DIM. ±	DRILL, PUNCH, COMMERCIAL STOCK SIZES AND MANUFACTURERS TOLERANCES ARE NOT INCLUDED.



A-191-194 D. (FOR NT-129-632-4) 4REQ.

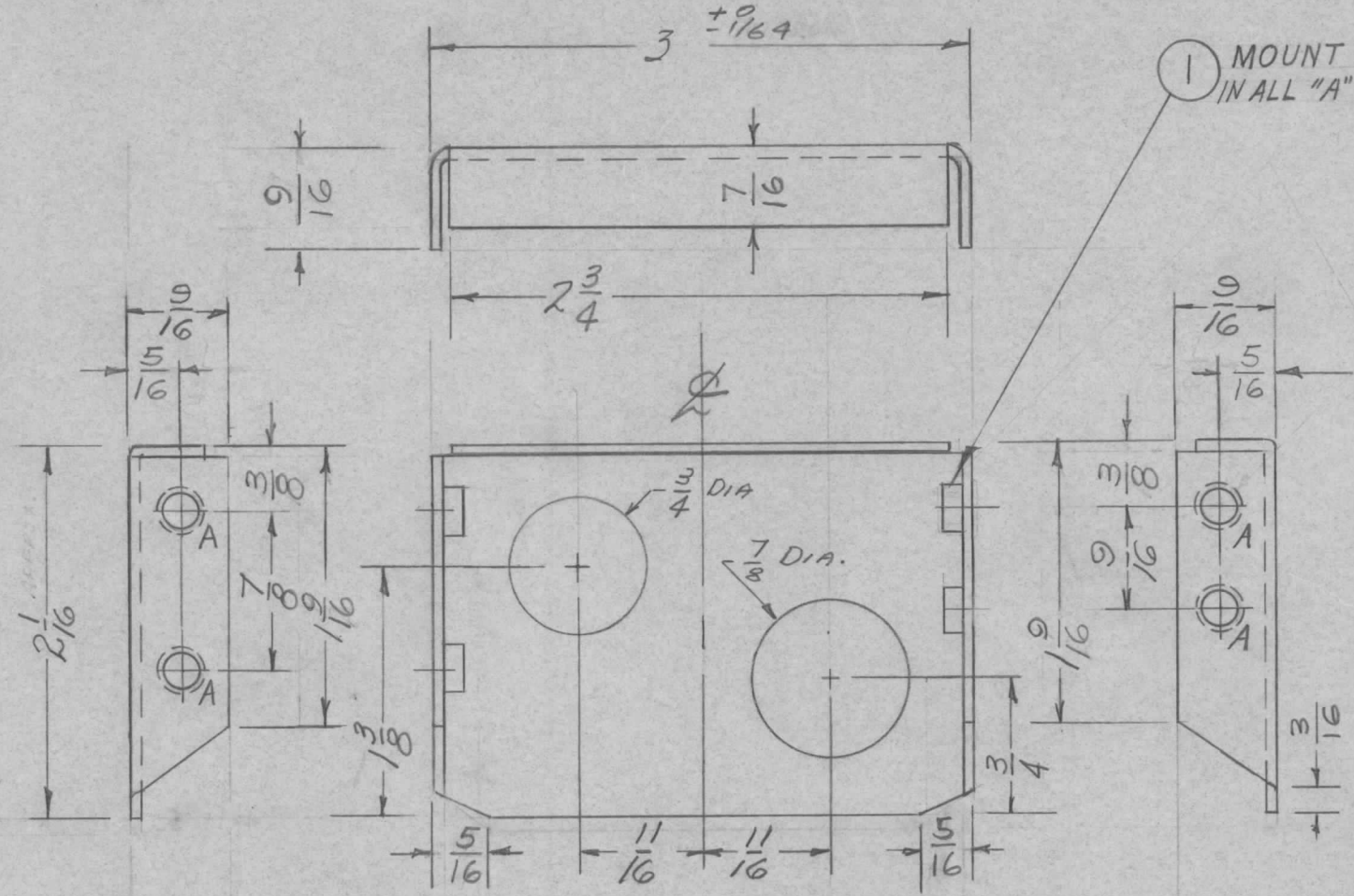
REQ. PER UNIT 1	USED ON		MS-269	B
	MODEL MODEL CFA	ASS'Y. NO.		

UNLESS OTHERWISE SPECIFIED  
DIMENSIONS ARE IN INCHES AND INCLUDE  
CHEMICALLY APPLIED OR PLATED FINISHES

TOLERANCES

DECIMALS  
.X ± .05  
.XX ± .01  
.XXX ± .005

FRACTIONS  
± 1/64  
ANGLES  
± 0° 30'



7 (210) ...  
FOR ...  
14 ...  
...

REF: LD-415(1)

4	1	NT-129-632-3	NUT, ROUND, SWAGE TYPE	
REQ. ITEM		PART NO.	DESCRIPTION	SYMBOL
.051 THICK STOCK SIZE			THE TECHNICAL MATERIEL CORP. MAMARONECK, NEW YORK	
ALUMINUM			BRACKET, REAR CONDENSER MODEL CFA	
MATERIAL				
5052-H32	CFA	7/1/58	16	AMB
TYPE & TEMPER		HEAT TREAT. SPEC.	DRAWN	CHECKED
IRIDITE S404				
FINISH & SPEC. NO.		ELEC. DES. APP.	MECH. DES. APP.	FINAL APPROVAL
				MS-269 B

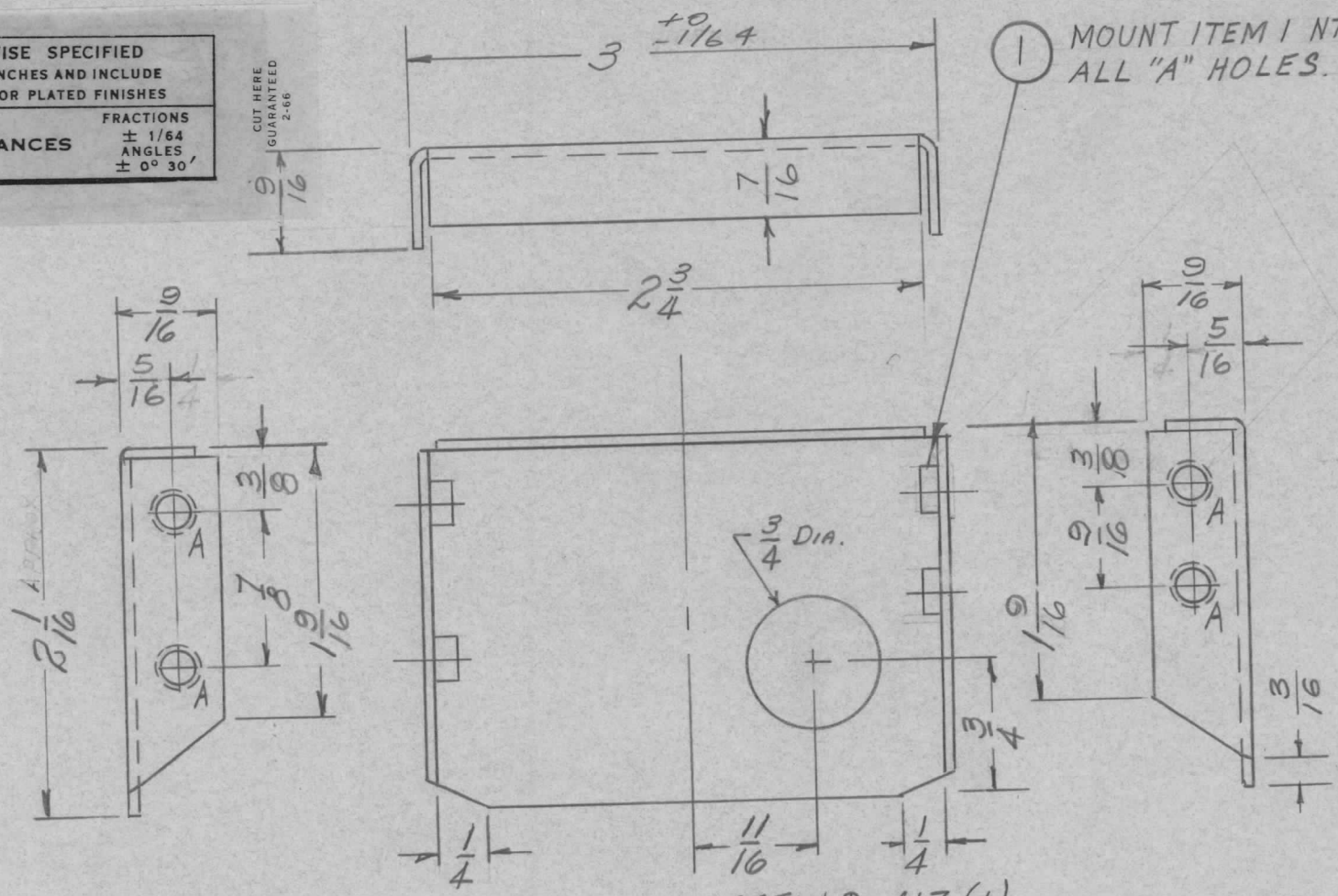
B	1	ON B/M. IT WAS ...632-4	10-22-64	12717	JK	@	AMB
A	2	"A" HOLES WERE 7/32 D.	9-6-60				AMB
	1	ITEM 1 WAS SM-III-D206					
ISSUE	ITEM	CHANGED FROM	DATE	CH. NO.	DRAFTS	CHECKER	ENG. APP.
TOLERANCES			SCALE: FULL				
DEC. DIM. ±			MAXIMUM ALLOWABLE TOLERANCES HAVE BEEN DETERMINED AND ANY DEVIATIONS WILL BE CAUSE FOR REJECTION.				
FRAC. DIM. ± 1/64			REMOVE ALL BURRS AND SHARP EDGES				
ANGULAR DIM. ±							

A-191-194 D. (FOR NT-129-632-4) 4REQ.

REQ. PER UNIT 1	USED ON		MS-270	B
	MODEL MODEL CFA	ASS'Y. NO. 7-2-58		

UNLESS OTHERWISE SPECIFIED  
DIMENSIONS ARE IN INCHES AND INCLUDE  
CHEMICALLY APPLIED OR PLATED FINISHES

DECIMALS	TOLERANCES	FRACTIONS
.X ± .05		± 1/64
.XX ± .01		ANGLES
.XXX ± .005		± 0° 30'



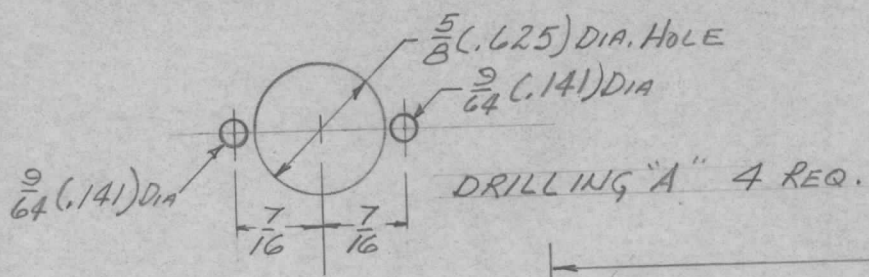
(1) MOUNT ITEM 1 NT-129-632-4 IN ALL "A" HOLES.

26.12.58  
FOR SM-III-DEOG  
BY [unclear]  
DATE [unclear]  
CHECKED [unclear]

REF: LD-417 (1)

4	1	NT-129-632-3	NUT, ROUND, SWAGE TYPE	
REQ. ITEM	PART NO.		DESCRIPTION	SYMBOL
.051 THICK STOCK SIZE			THE TECHNICAL MATERIEL CORP. MAMARONECK. NEW YORK	
ALUMINUM			BRACKET, FRONT CONDENSER MODEL CFA	
MATERIAL			7/2/58 [unclear]	
5052-H32		[unclear]	16	[unclear]
TYPE & TEMPER	HEAT TREAT. SPEC.	DRAWN	CHECKED	FINAL APPROVAL
IRIDITE S404		[unclear]	[unclear]	[unclear]
FINISH & SPEC. NO.			ELEC. DES. APP.	MECH. DES. APP.
			MS-270	B

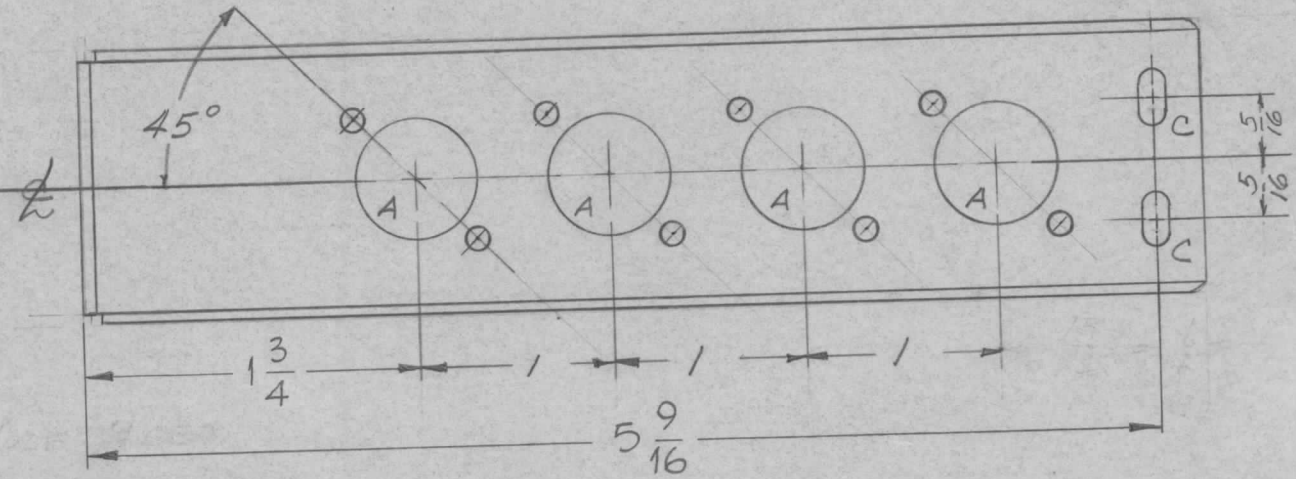
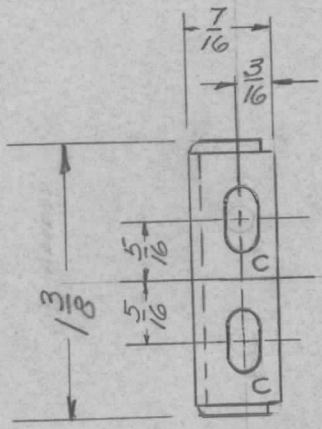
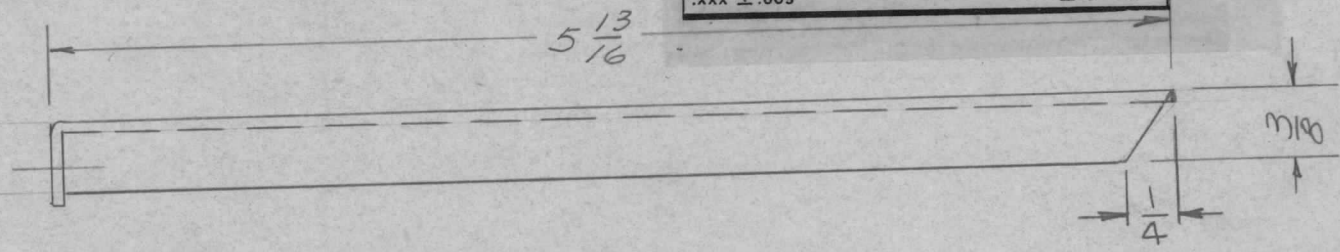
B	1	ON B/M. IT. I WAS... 632-4	10-22-64	12717	9.2	@	[unclear]	[unclear]
A	2	"A" HOLES WERE 7/32 D	9-6-60	[unclear]	[unclear]	[unclear]	[unclear]	[unclear]
	1	ITEM 1 WAS SM-III-DEOG SUPERCEDES A-412-A 7-22-58						
ISSUE	ITEM	CHANGED FROM	DATE	CH. NO.	DRAFTS	CHECKER	ENG. APP.	
TOLERANCES			SCALE: FULL					
DEC. DIM. ±			MAXIMUM ALLOWABLE TOLERANCES HAVE BEEN DETERMINED AND ANY DEVIATIONS WILL BE CAUSE FOR REJECTION.					
FRAC. DIM. ± 1/64			REMOVE ALL BURRS AND SHARP EDGES					
ANGULAR DIM. ±								



REQ. PER UNIT	USED ON			MS-271 E
	MODEL	ASS'Y. NO.	DATE	
1	MODEL CFA		7-1-58	

UNLESS OTHERWISE SPECIFIED DIMENSIONS ARE IN INCHES AND INCLUDE CHEMICALLY APPLIED OR PLATED FINISHES		
DECIMALS	TOLERANCES	FRACTIONS
.X ± .05		± 1/64
.XX ± .01		ANGLES
.XXX ± .005		± 0° 30'

CUT HERE GUARANTEED 2-66



C-11 x 11/64 32 4 REQ.

REF.: TMC# LD-416 (2)

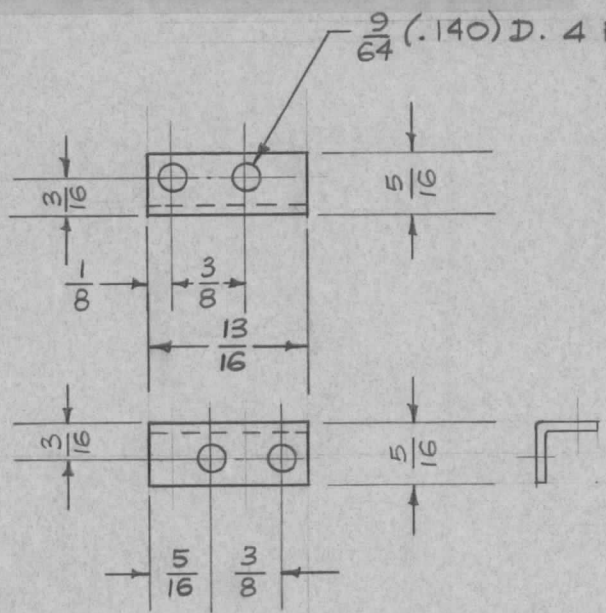
ISSUE	ITEM	CHANGED FROM	DATE	CH. NO.	DRAFTS	CHECKER	ENG. APP.	REQ. ITEM	PART NO.	DESCRIPTION	SYMBOL	
E	1	DIM 1/4 ADDED TO TOP VIEW	7-29-64	11940		JCB	ACE			THE TECHNICAL MATERIEL CORP. MAMARONECK, NEW YORK SUB-CHASSIS F.S. CONVERTER MODEL CFA	MS-271 E	
D	2	1-3/4" + 5-9/16 DIM. ADDED	10/26/60	3313	J.C.B.	JCB	JCB		.051 THICK			
	1	1/4" + 13/16" DIM. DELETED							STOCK SIZE			
C	2	② 'C' SLOTS ADDED	5/26/59	1049	J.C.B.	JCB	JCB		ALUMINUM			
	1	② 'B' HOLES 11/64 D. DELETED							MATERIAL			
B	1	REDRAWN BROUGHT UP TO DATE (NO CHG.)	7/1/58	12	AC	JCB	ACE		52S-1/4 HARD	7-1/58	16	ACE
TOLERANCES			SCALE: FULL			TYPE & TEMPER			HEAT TREAT. SPEC.	DRAWN	CHECKED	FINAL APPROVAL
DEC. DIM. ±			MAXIMUM ALLOWABLE TOLERANCES HAVE BEEN DETERMINED AND ANY DEVIATIONS WILL BE CAUSE FOR REJECTION.			ALKALI ETCH & LACQUER						
FRAC. DIM. ± 1/64			REMOVE ALL BURRS AND SHARP EDGES			FINISH & SPEC. NO.			ELEC. DES. APP.	MECH. DES. APP.		
ANGULAR DIM. ±												

UNLESS OTHERWISE SPECIFIED DIMENSIONS ARE IN INCHES AND INCLUDE CHEMICALLY APPLIED OR PLATED FINISHES	
DECIMALS .X ± .05 .XX ± .01 .XXX ± .005	TOLERANCES FRACTIONS ± 1/64 ANGLES ± 0° 30'

CUT HERE  
GUARANTEED  
2-66

REQ. PER UNIT	USED ON	
	MODEL	ASS'Y. NO. DATE
1	CFA-1	12-14-56
1	CFA-L	12-14-56
1	CFA-1LB	12-14-56

MS-274 B



NOTE: THIS BRACKET MOUNTS TERMINAL BOARDS  
1A-400 AND 1A-401

BLANK SIZE - 17/32 x 1 1/16

ISSUE	ITEM	CHANGED FROM	DATE	CH. NO.	DRAFTS	CHECKER	ENG. APP.	REQ. ITEM	PART NO.	DESCRIPTION	SYMBOL	
										THE TECHNICAL MATERIEL CORP. MAMARONECK. NEW YORK	BRACKET, OSC. TERMINAL BOARD	
B	1	S404-IRIDITE S104-CAUSTIC DIP	12-7-59	1001	P		EMN.		.051 THK. STOCK SIZE			
A	1	REDRAWN/HOLE POS. CHG'D	12-14-56	1	16	JMD	AM		ALUMINUM			
TOLERANCES								SCALE: FULL				
DEC. DIM. ± FRAC. DIM. ± 1/64 ANGULAR DIM. ±								MAXIMUM ALLOWABLE TOLERANCES HAVE BEEN DETERMINED AND ANY DEVIATIONS WILL BE CAUSE FOR REJECTION. REMOVE ALL BURRS AND SHARP EDGES				
								5052-H32	ff	16 12-14-56	JMD	AM
								TYPE & TEMPER	HEAT TREAT. SPEC.	DRAWN	CHECKED	FINAL APPROVAL
								S-101		SUPERCEDES AMS-253	12/17/54	MS-274 B
								FINISH & SPEC. NO.	ELEC. DES. APP.	MECH. DES. APP.		

IF IT IS FOUND DESIRABLE TO CHANGE ANY TOLERANCE OR OTHER DETAIL SPECIFIED ON THIS DRAWING NOTIFY THE PURCHASER PROMPTLY.

MAXIMUM ALLOWABLE TOLERANCES HAVE BEEN DETERMINED AND DEVIATIONS WILL BE CAUSE FOR REJECTION. REMOVE ALL BURRS AND SHARP EDGES

UNLESS OTHERWISE SPECIFIED DIMENSIONS ARE IN INCHES AND INCLUDE CHEMICALLY APPLIED OR PLATED FINISHES

DECIMALS	FRACTIONS
.X ± .05	± 1/64
.XX ± .01	ANGLES ± 0° 30'
.XXX ± .005	

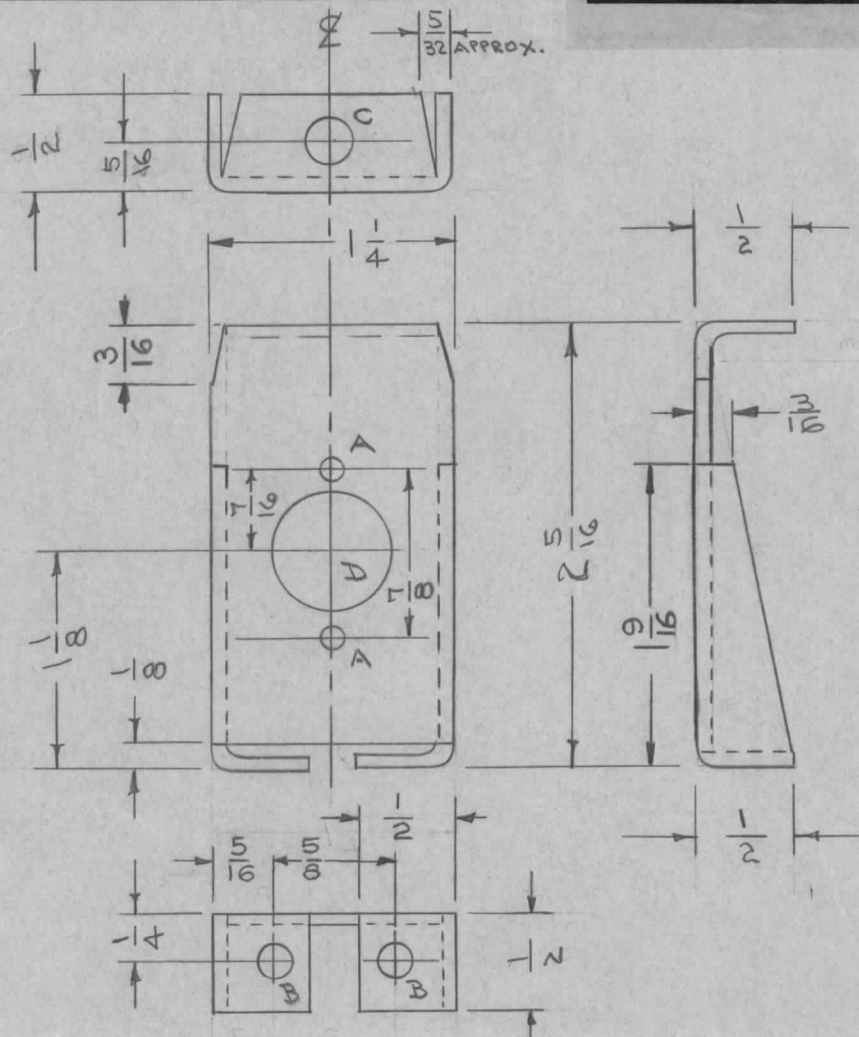
TOLERANCES

REVISIONS  
WHERE APPLICABLE  
DATE  
UNIT

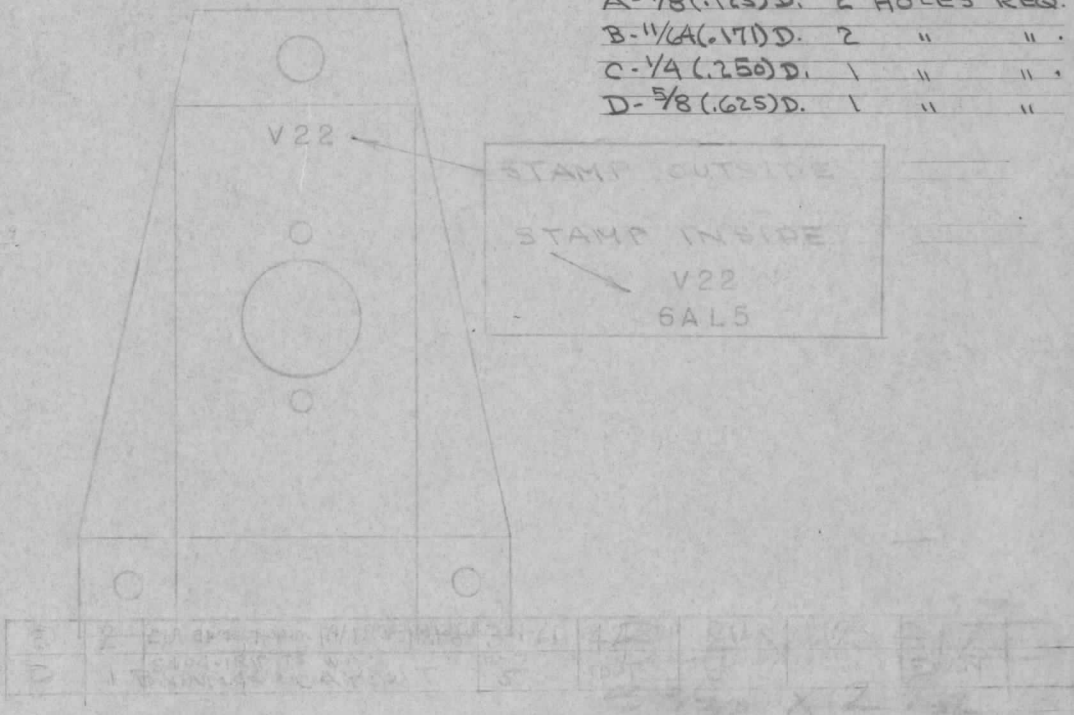
MS-275 F

USED ON

MODEL	PROJECT NO.	ASS'Y. NO.	DATE
CFA-1,2,L, CFA-LB			1/12/54



- A-1/8(.125)D. 2 HOLES REQ.
- B-1/4(.125)D. 2 " "
- C-1/4(.250)D. 1 " "
- D-5/8(.625)D. 1 " "



Ref-(1)LD-434

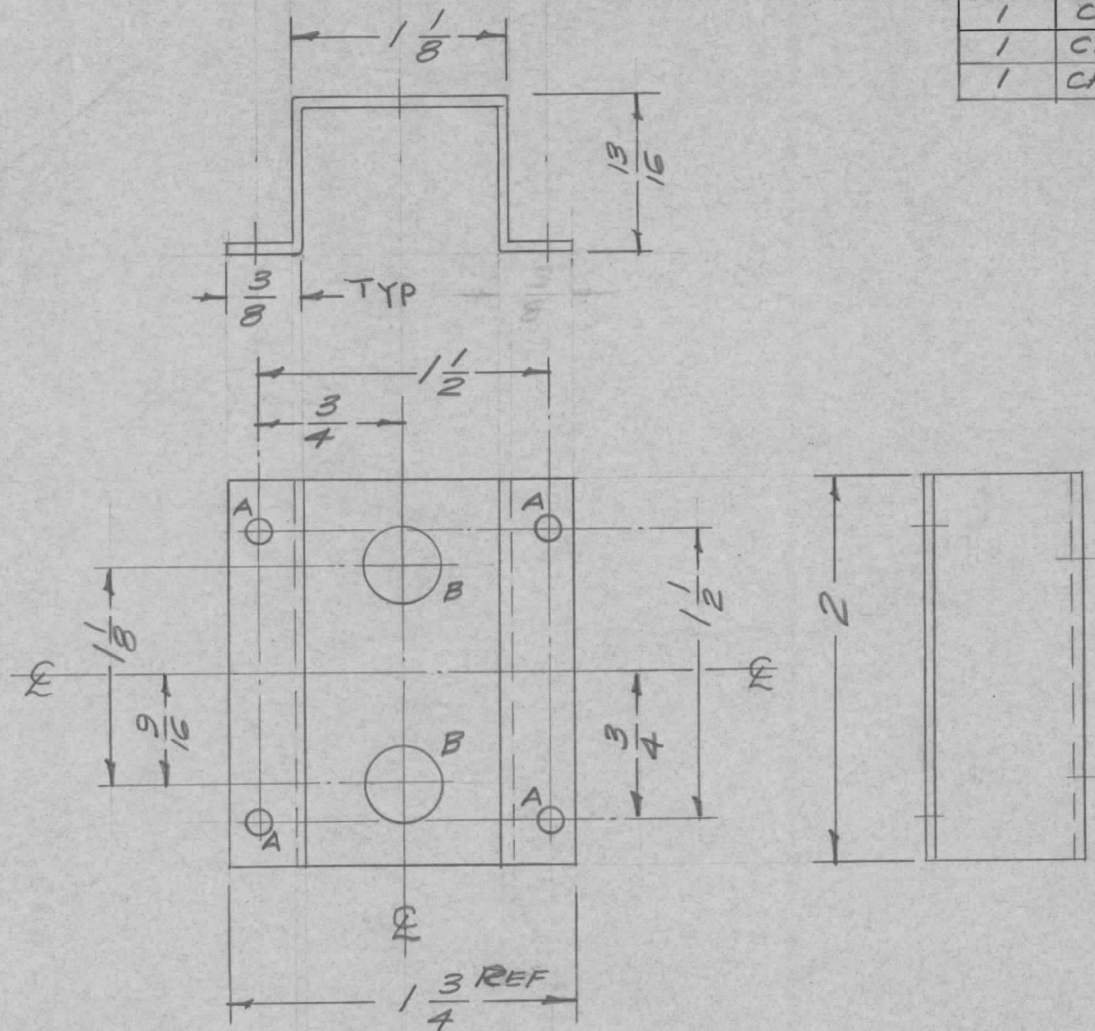
REQ.	ITEM	PART NO.	DESCRIPTION	SYMBOL
	.051		THE TECHNICAL MATERIEL CORP. MAMARONECK, NEW YORK	
	ALUMINUM	—	BRACKET, TUBE	
	52S H32		CFA	
			C.D.D. 1-12-54	
			DRAWN	
			ELEC. DES. APP.	
			MECH. DES. APP.	
			CHECKED	
			FINAL APPROVAL	
			S404-IRIDITE-P	
			FINISH & SPEC. NO.	
			MS-275	F

F	1	ON-SIDE VIEW, DIM 3/16 ADDED	7-1-63	9411				
ISSUE	ITEM	CHANGED FROM	DATE	CN. NO.	DRAFTS	CHECKER	ENG. APP.	

TOLERANCES	SCALE	DRILL, PUNCH, COMMERCIAL STOCK SIZES AND MANUFACTURERS TOLERANCES ARE NOT INCLUDED.
ALL OTHERS DEC. DIM. ± FRAC. DIM. ± 1/64 ANGULAR DIM. ±		

REQ. PER UNIT	USED ON	
	MODEL	DATE
1	CFA-1	7-23-58
1	CFA-1LB	7-23-58
1	CFA-L	7-23-58

MS-283 B



A - 9/64 (.140) 4 Req.  
 B - 13/32 (.406) 2 Req.

UNLESS OTHERWISE SPECIFIED DIMENSIONS ARE IN INCHES AND INCLUDE CHEMICALLY APPLIED OR PLATED FINISHES		
DECIMALS	TOLERANCES	FRACTIONS
.X ± .05		± 1/64
.XX ± .01		ANGLES
.XXX ± .005		± 0° 30'

CUT HERE  
 GUARANTEED  
 2-66

ISSUE	ITEM	CHANGED FROM	DATE	CH. NO.	DRAFTS	CHECKER	ENG. APP.	REQ. ITEM	PART NO.	DESCRIPTION	SYMBOL
									.051 THK	THE TECHNICAL MATERIEL CORP. MAMARONECK, NEW YORK	BRACKET, POTENTIOMETER
									STOCK SIZE		
									ALUMINIUM		
									MATERIAL		
									5052-H32	16 7/23/58	
									TYPE & TEMPER	CHECKED	FINAL APPROVAL
									HEAT TREAT. SPEC.		
									S404 IRIDITE		MS-283 B
									FINISH & SPEC. NO.	ELEC. DES. APP.	MECH. DES. APP.

Redrawn-No mech. Rev. - 7/23/58 2 16 JDe

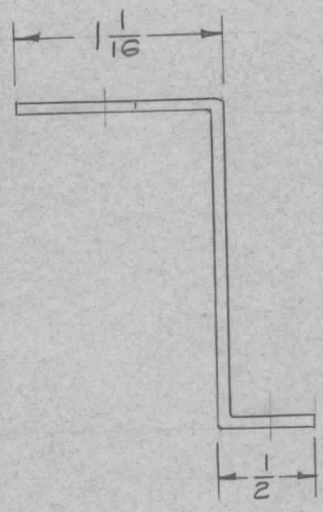
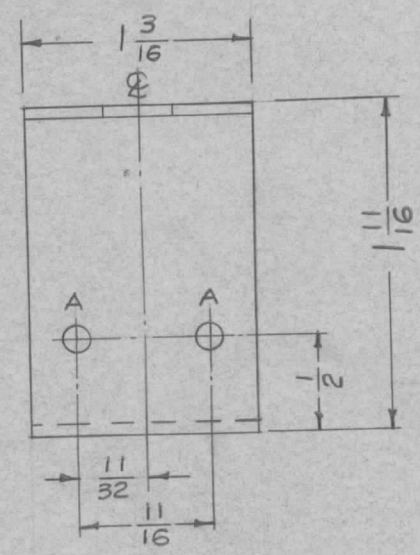
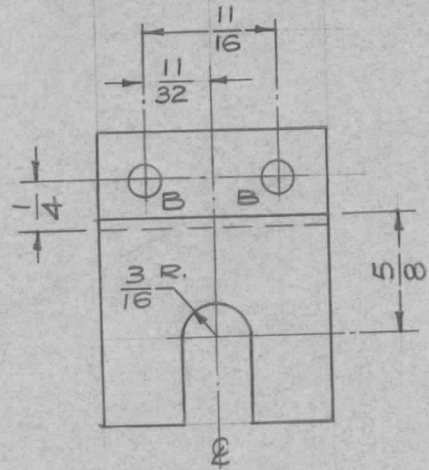
ISSUE ITEM CHANGED FROM DATE CH. NO. DRAFTS CHECKER ENG. APP.

TOLERANCES SCALE: FULL

DEC. DIM. ±  
 FRAC. DIM. ± 1/64  
 ANGULAR DIM. ±

MAXIMUM ALLOWABLE TOLERANCES HAVE BEEN DETERMINED AND ANY DEVIATIONS WILL BE CAUSE FOR REJECTION.  
 REMOVE ALL BURRS AND SHARP EDGES

REQ. PER UNIT	USED ON			MS-284	A
	MODEL	ASS'Y. NO.	DATE		
1	CFA-1		7-23-58		
1	CFA-L		7-23-58		
1	CFA-LB		7-23-58		



A -  $\frac{9}{64}$  (.140) D. 2 REQ.  
 B -  $\frac{11}{64}$  (.171) D. 2 REQ.

UNLESS OTHERWISE SPECIFIED  
 DIMENSIONS ARE IN INCHES AND INCLUDE  
 CHEMICALLY APPLIED OR PLATED FINISHES

DECIMALS	TOLERANCES	FRACTIONS
.X ± .05		± 1/64
.XX ± .01		ANGLES
.XXX ± .005		± 0° 30'

CUT HERE  
 GUARANTEED  
 2-66

REF: (1) LD-433

ISSUE	ITEM	CHANGED FROM	DATE	CH. NO.	DRAFTS	CHECKER	ENG. APP.	REQ. ITEM	PART NO.	DESCRIPTION	SYMBOL		
A	-	REDRAWN - NO CHANGE	7/23/58	16	-	-	-			THE TECHNICAL MATERIEL CORP. MAMARONECK, NEW YORK	BRACKET, REACTOR and POTENTIOMETER MOUNTING		
TOLERANCES			SCALE: FULL					5052-H32	67-23-58	RE-DRAWN	CHECKED	FINAL APPROVAL	
DEC. DIM. ±			MAXIMUM ALLOWABLE TOLERANCES HAVE BEEN DETERMINED AND ANY DEVIATIONS WILL BE CAUSE FOR REJECTION. REMOVE ALL BURRS AND SHARP EDGES					S404 IRIDITE		ELEC. DES. APP.		MECH. DES. APP.	
FRAC. DIM. ± 1/64								5052-H32		67-23-58		MS-284	
ANGULAR DIM. ±													

IF IT IS FOUND DESIRABLE TO CHANGE ANY TOLERANCE OR OTHER DETAIL SPECIFIED ON THIS DRAWING NOTIFY THE PURCHASER PROMPTLY.

MAXIMUM ALLOWABLE TOLERANCES HAVE BEEN DETERMINED AND DEVIATIONS WILL BE CAUSE FOR REJECTION. REMOVE ALL BURRS AND SHARP EDGES

UNLESS OTHERWISE SPECIFIED DIMENSIONS ARE IN INCHES AND INCLUDE CHEMICALLY APPLIED OR PLATED FINISHES

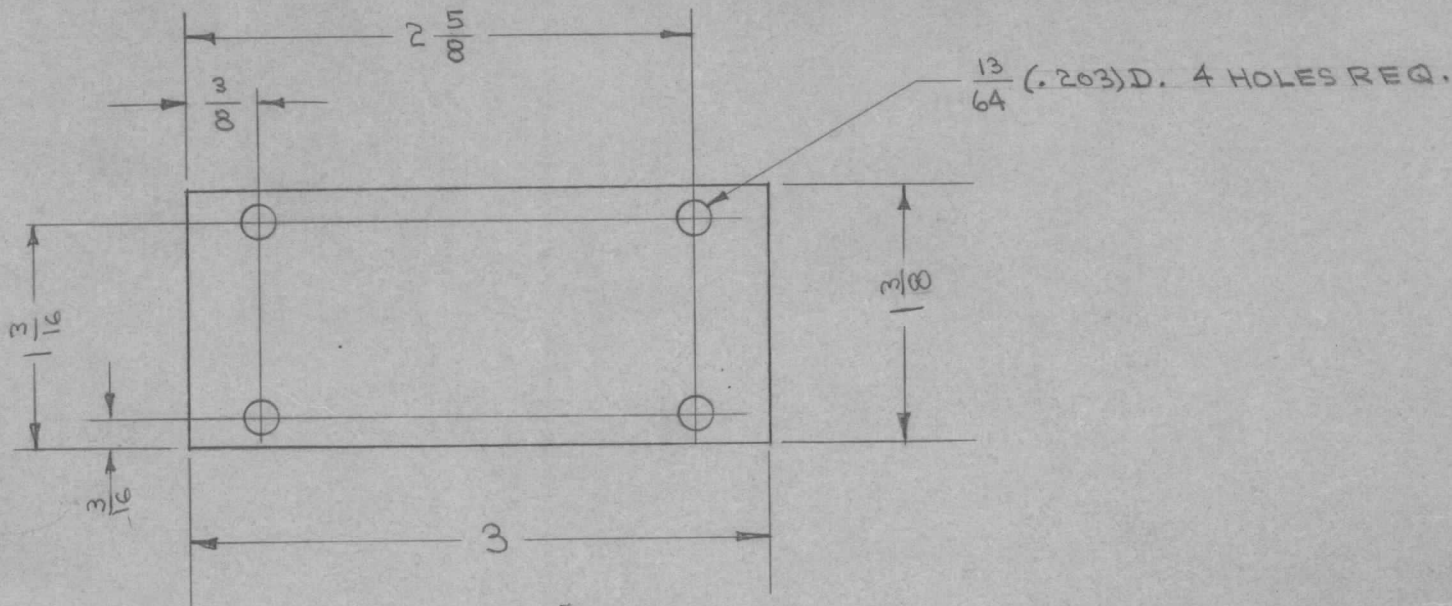
DECIMALS	TOLERANCES	FRACTIONS
.X ± .05		± 1/64
.XX ± .01		ANGLES ± 0° 30'
.XXX ± .005		

CUT HERE GUARANTEED 2-66

MS-285 B

USED ON

MODEL	PROJECT NO.	ASS'Y. NO.	DATE
PSP-2			2-16-53



BLANK SIZE - 3 x 1 3/8

ISSUE	ITEM	CHANGED FROM	DATE	CN. NO.	DRAFTS	CHECKER	ENG. APP.
B	1	S404-IRIDITE WAS S101 CAUSTIC DIP	12-3 53	1001	✓		EMN
A	3	1 3/8 was 1 5/16	5/20/53	1	JAD	PJB	PJB
	2	1 3/16 was 1 5/32					
	1	3/16 was 5/32					

REQ.	ITEM	PART NO.	DESCRIPTION	SYMBOL
		.064	THE TECHNICAL MATERIEL CORP.	
		STOCK SIZE	MAMARONECK, NEW YORK	
		ALUMINUM	SUPPORT PLATE	
		MATERIAL		
		WEIGHT PER PC.		
		52S H32		
		TYPE & TEMPER	C.D.D.	
			DRAWN	ELEC. DES. APP.
				MECH. DES. APP.
			MD-2-19-53	
			CHECKED	FINAL APPROVAL
		S404-IRIDITE		MS-285 B
		FINISH & SPEC. NO.		

TOLERANCES

SCALE

DRILL, PUNCH, COMMERCIAL STOCK SIZES AND MANUFACTURERS TOLERANCES ARE NOT INCLUDED.

ALL OTHERS

DEC. DIM. ±  
FRAC. DIM. ± 1/64  
ANGULAR DIM. ±



IF IT IS FOUND DESIRABLE TO CHANGE ANY TOLERANCE OR OTHER DETAIL SPECIFIED ON THIS DRAWING NOTIFY THE PURCHASER PROMPTLY.

UNLESS OTHERWISE SPECIFIED DIMENSIONS ARE IN INCHES AND INCLUDE CHEMICALLY APPLIED OR PLATED FINISHES

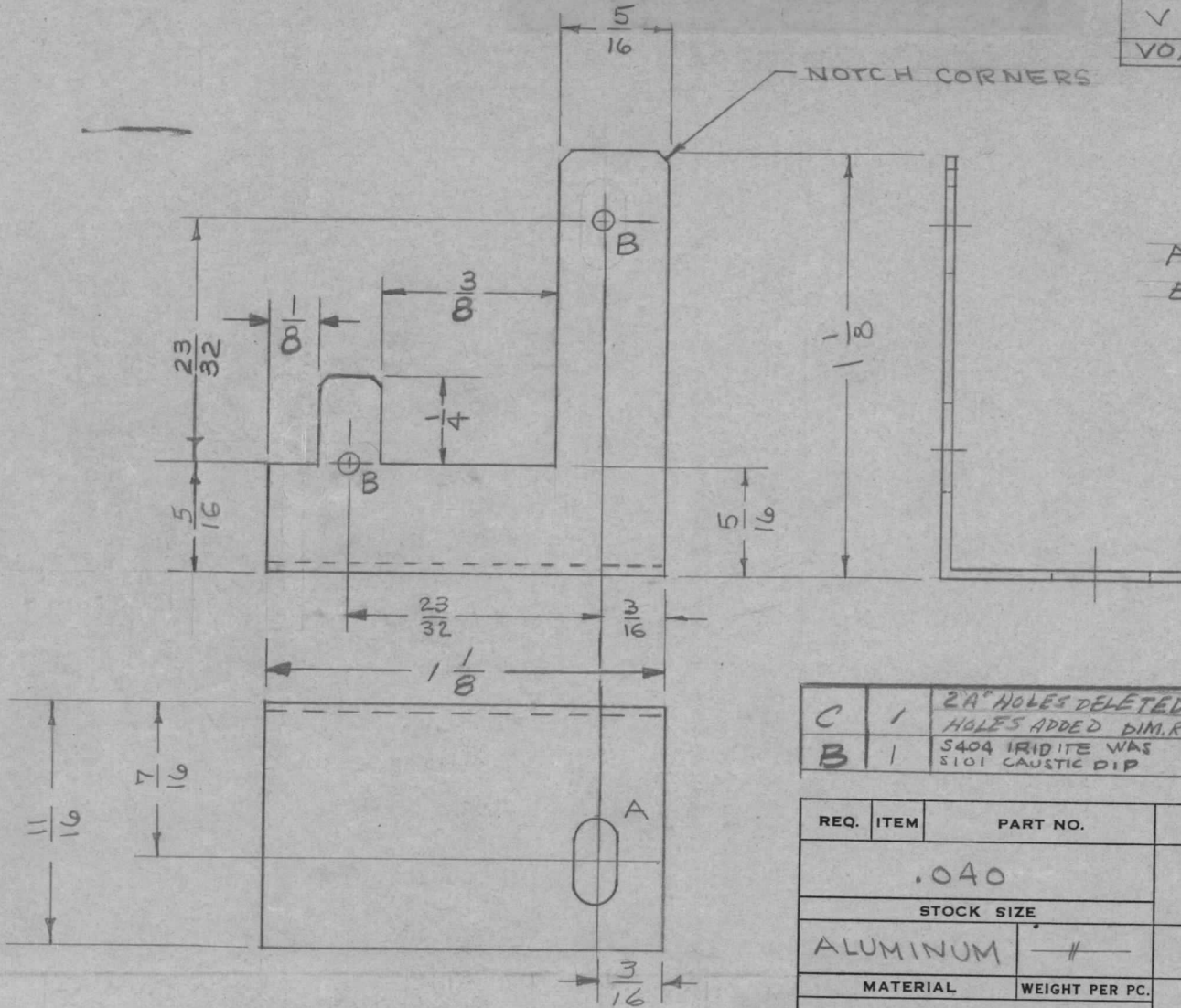
MAXIMUM ALLOWABLE TOLERANCES HAVE BEEN DETERMINED AND DEVIATIONS WILL BE CAUSE FOR REJECTION. REMOVE ALL BURRS AND SHARP EDGES

DECIMALS	FRACTIONS
X ± .05	± 1/64
XX ± .01	ANGLES
XXX ± .005	± 0° 30'

CUT HERE  
GUARANTEED  
2-166

MS-286 C

USED ON			
MODEL	PROJECT NO.	ASS'Y. NO.	DATE
VOX	101	A-608	2-17-53
VOX-12	291		1-24-55



A = 1/8 x 1/4 PUNCH - 1 REQ.  
B = 1/8 DIA. - 2 REQ.

C	1	2A HOLES DELETED. 2 B HOLES ADDED DIM. REVISED	10/24/55	15046	A.V.V.	806	
B	1	S404 IRIDITE WAS S101 CAUSTIC DIP	12-7-59	1001	SP		

REQ.	ITEM	PART NO.	DESCRIPTION	SYMBOL
		.040	THE TECHNICAL MATERIEL CORP.	
		STOCK SIZE	MAMARONECK. NEW YORK	
		ALUMINUM	SWITCH BRACKET	
		MATERIAL	R.F. CHASSIS	
		WEIGHT PER PC.		
		52S H32		
		TYPE & TEMPER	C.D.D. 2-17-53	ATT
			DRAWN	ELEC. DES. APP.
			HEAT TREAT. SPEC.	MECH. DES. APP.
		S404 IRIDITE	AD 2-18-53	ATT
		FINISH & SPEC. NO.	CHECKED	FINAL APPROVAL
				MS-286 C

A	1	A HOLES MOVED OVERALL DIM CHANGED	1/7/54	1	16	MADHOUSE	
ISSUE	ITEM	CHANGED FROM	DATE	CN. NO.	DRAFTS	CHECKER	ENG. APP.

TOLERANCES		SCALE	DRILL, PUNCH, COMMERCIAL STOCK SIZES AND MANUFACTURERS TOLERANCES ARE NOT INCLUDED.
ALL OTHERS	DEC. DIM. ±		
	FRAC. DIM. ± 1/64		
	ANGULAR DIM. ±		

IF IT IS FOUND DESIRABLE TO CHANGE ANY TOLERANCE OR OTHER DETAIL SPECIFIED ON THIS DRAWING NOTIFY THE PURCHASER PROMPTLY.

UNLESS OTHERWISE SPECIFIED DIMENSIONS ARE IN INCHES AND INCLUDE CHEMICALLY APPLIED OR PLATED FINISHES

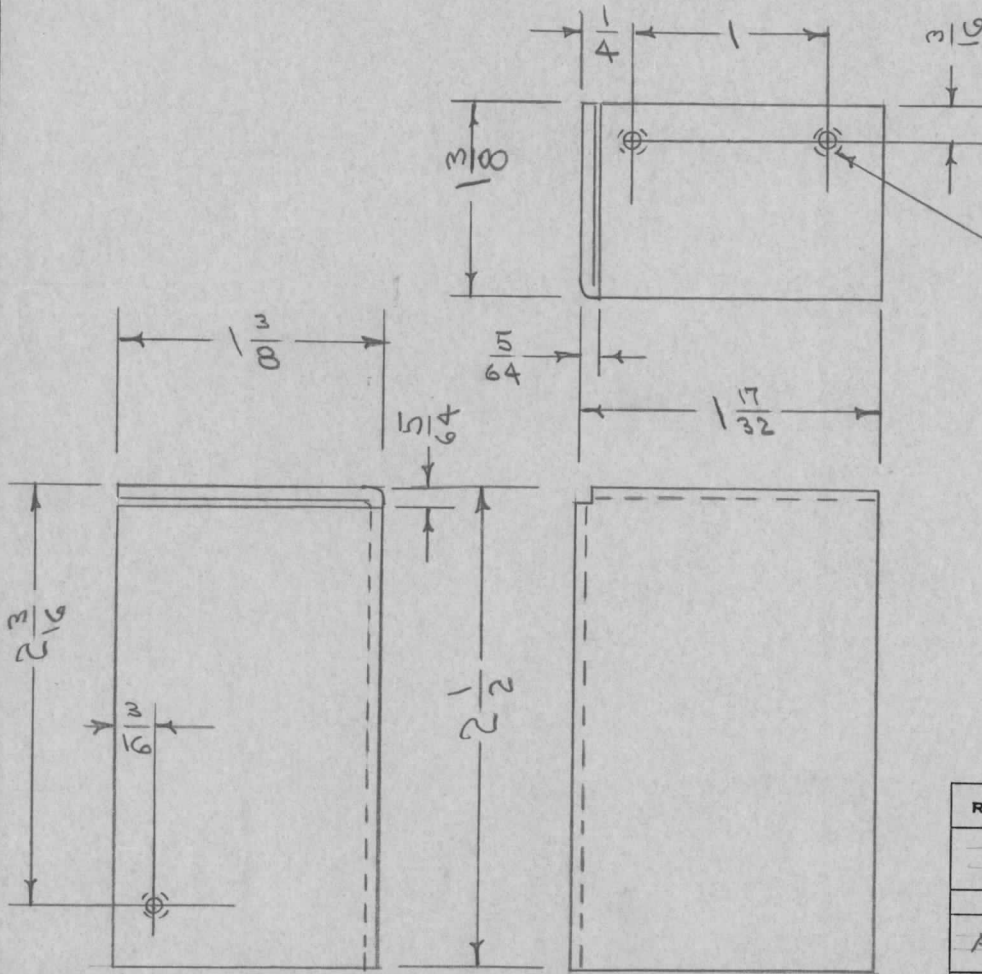
MS-295 B

MAXIMUM ALLOWABLE TOLERANCES HAVE BEEN DETERMINED AND DEVIATIONS WILL BE CAUSE FOR REJECTION. REMOVE ALL BURRS AND SHARP EDGES

DECIMALS	TOLERANCES	FRACTIONS
.X ± .05		± 1/64
.XX ± .01		ANGLES ± 0° 30'
.XXX ± .005		

CUT HERE GUARANTEED 2-66

REQ. PER UNIT	USED ON			
	MODEL	PROJECT NO.	ASS'Y. NO.	DATE
1	VOX			2-2-55
1	VOX-1/2	291		2-2-55



BLANK SIZE

2 13/16 X 3 25/32

REQ.	ITEM	PART NO.	DESCRIPTION	SYMBOL
		.064	THE TECHNICAL MATERIEL CORP.	
		STOCK SIZE	MAMARONECK. NEW YORK	
	ALUMINUM	—	PLUG COVER, P.S.	
	MATERIAL	WEIGHT PER PC.		
		52S H32		
	TYPE & TEMPER		C.D.D. 2-2-55	
		—	DRAWN	ELEC. DES. APP. MECH. DES. APP.
	HEAT TREAT. SPEC.		FADE 2-2-55	
		S-404 IRIDITE	CHECKED	FINAL APPROVAL
	FINISH & SPEC. NO.			MS-295 B

B	1	S404 IRIDITE WAS S101 CAUSTIC DIP	12-7-55	1001	φ		EMN
A	1	COMPLETE REVISION	2/4/55	1	φ	FADE	WDE
ISSUE	ITEM	CHANGED FROM	DATE	CN. NO.	DRAFTS	CHECKER	ENG. APP.
TOLERANCES			SCALE				
ALL OTHERS	DEC. DIM. ± FRAC. DIM. ± 1/64 ANGULAR DIM. ±		DRILL, PUNCH, COMMERCIAL STOCK SIZES AND MANUFACTURERS TOLERANCES ARE NOT INCLUDED.				