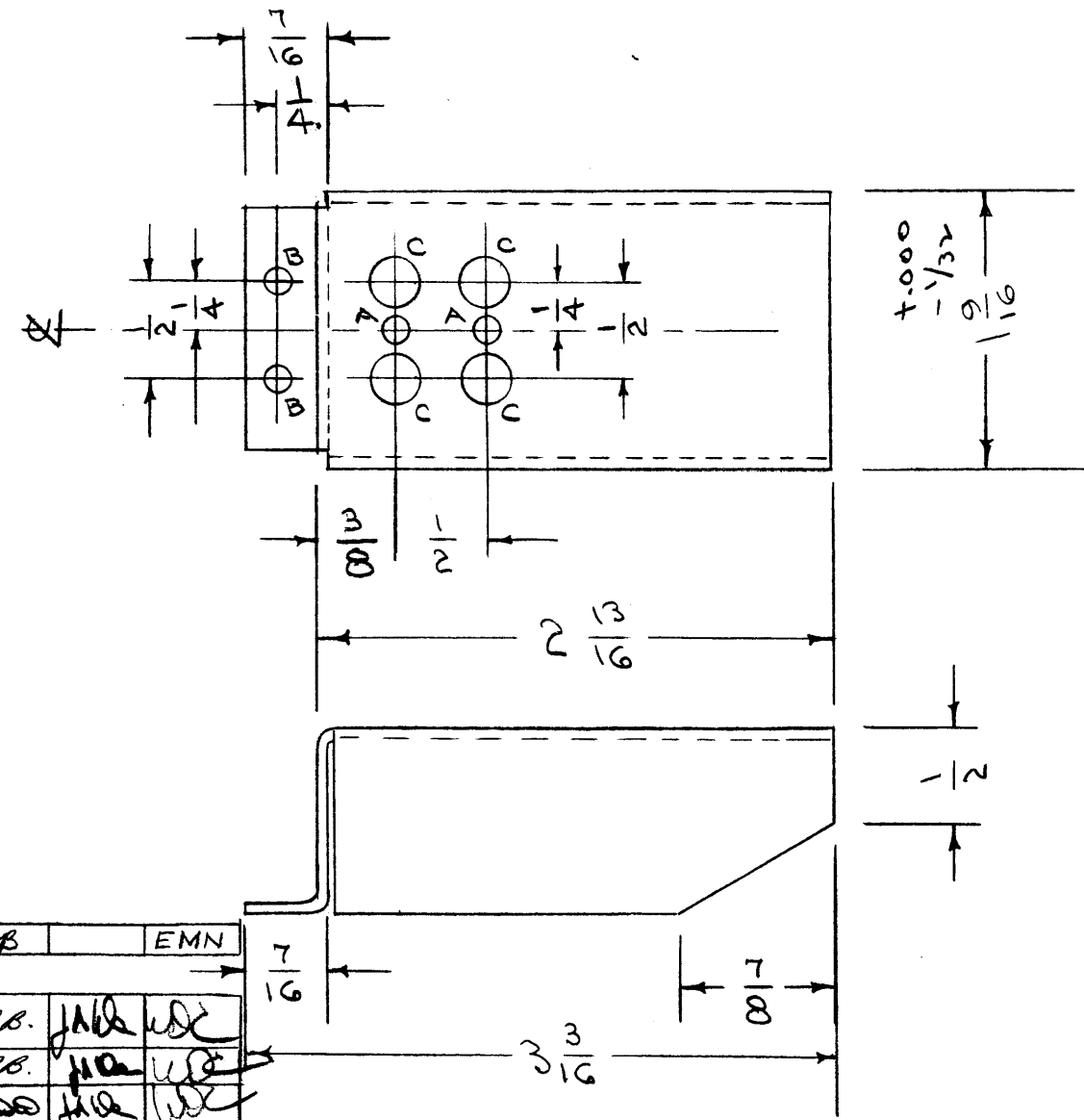
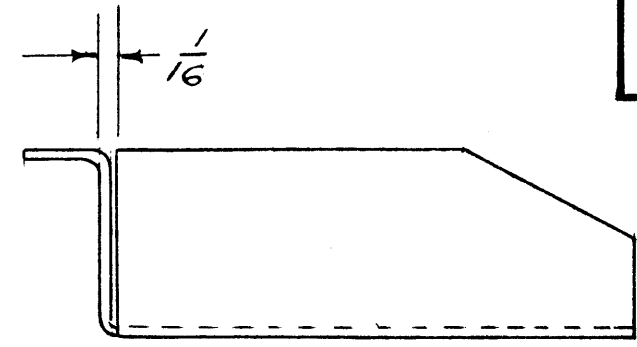
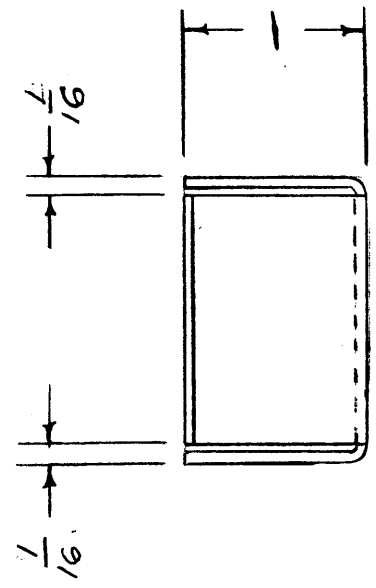


IF IT IS FOUND DESIRABLE TO CHANGE ANY TOLERANCE OR OTHER DETAIL SPECIFIED ON THIS DRAWING NOTIFY THE PURCHASER PROMPTLY.

MAXIMUM ALLOWABLE TOLERANCES HAVE BEEN DETERMINED AND DEVIATIONS WILL BE CAUSE FOR REJECTION. REMOVE ALL BURRS AND SHARP EDGES

MS-299 E

A - 9/64 (.140) D. 2 HOLES REQ.
 B - 5/32 (.156) D. 2 " " "
 C - 9/32 (.281) D. A " " "



NOTICE TO PERSONS RECEIVING THIS DRAWING

THE TECHNICAL MATERIEL CORPORATION claims proprietary right in the material disclosed herein. This drawing is issued in confidence for engineering information only and may not be reproduced or used to manufacture anything shown hereon without permission from THE TECHNICAL MATERIEL CORPORATION to the user. This drawing is loaned for mutual assistance and is subject to recall at any time.

Property of:
 THE TECHNICAL MATERIEL CORPORATION
 MAMARONECK, NEW YORK

(mate)
 REF: MS-296 LD-379 (Stamping)

REQ. ITEM	PART NO.	DESCRIPTION	SYMBOL
	.051	THE TECHNICAL MATERIEL CORP. MAMARONECK, NEW YORK	
	ALUMINUM	XTAL BRACKET, P.S.	
	52S H32	VOX	
		ADD 1-20-55	
		DRAWN	ELEC. DES. APP. MECH. DES. APP.
		CHECKED	FINAL APPROVAL
		HEAT TREAT. SPEC.	
		5-404 YELLOW IRIDITE	
		FINISH & SPEC. NO.	

ISSUE	ITEM	CHANGED FROM	DATE	CN. NO.	DRAFTS	CHECKER	ENG. APP.
E	1	S-404 WAS S-101	12/11/54	1001	AB		EMN
D	2	1/16 WAS 5/64	3/24/55	4	P.B.	JAB	WJ
	1	REF. ADDED					
C	1	19/16 WAS 15/8	3-9-55	3	P.B.	HO	WJ
B	1	COMPLETE REVISION	1-20-55	2	COO	JAB	WJ

TOLERANCES		SCALE:
ALL OTHERS	DEC. DIM. ± FRAC. DIM. ± 1/64 ANGULAR DIM. ±	DRILL, PUNCH, COMMERCIAL STOCK SIZES AND MANUFACTURERS TOLERANCES ARE NOT INCLUDED.

REQ. PER UNIT	MODEL	PROJECT NO.	ASSY. NO.	DATE
1	VOX	291		1-20-55
1	VOX-2			1-20-55

USED ON