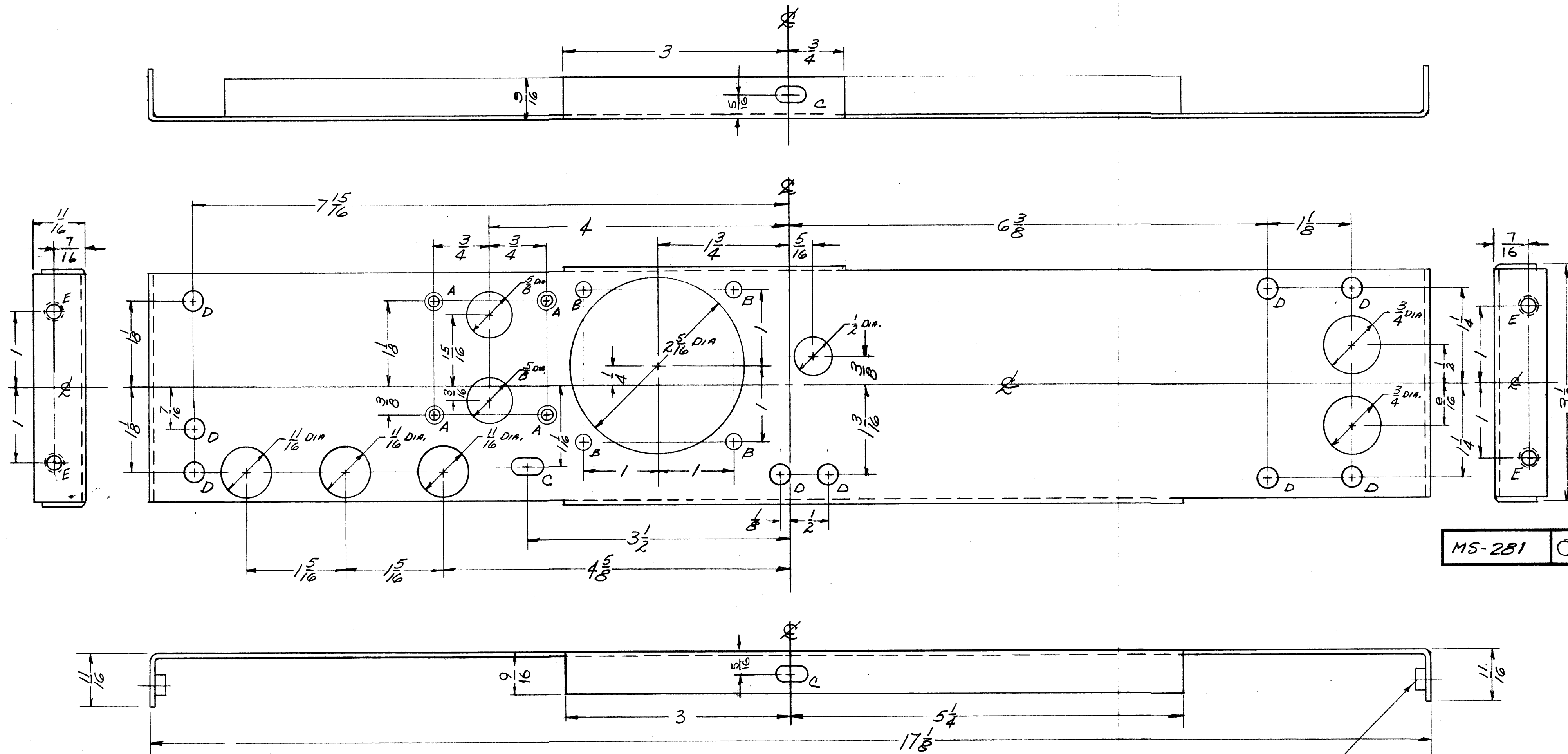


IF IT IS FOUND DESIRABLE TO CHANGE ANY TOLERANCE OR OTHER DETAIL SPECIFIED ON THIS DRAWING NOTIFY THE PURCHASER PROMPTLY.

MAXIMUM ALLOWABLE TOLERANCES HAVE BEEN DETERMINED AND DEVIATIONS WILL BE CAUSE FOR REJECTION. REMOVE ALL BURRS AND SHARP EDGES



MS-281 C

- A- DRILL & C'SINK FOR 4-40 FL. HD SC. 4 REQ.
- B- 13/64 (.203) DIA. HOLE 4 REQ.
- C- 13/64 x 13/32 SLOT 4 REQ.
- D- 1/4 (.250) DIA. HOLE. 9 REQ.
- E- .191-.194 D. (FOR NT-129-632-4) 4 REQ.

① MOUNT ITEM 1 NT-129-632-4 IN ALL "E" HOLES

**NOTICE TO PERSONS RECEIVING THIS DRAWING**

THE TECHNICAL MATERIEL CORPORATION claims proprietary right in the material disclosed hereon. This drawing is issued in confidence for engineering information only and may not be reproduced or used to manufacture anything shown hereon without permission from THE TECHNICAL MATERIEL CORPORATION to the user. This drawing is loaned for mutual assistance and is subject to recall at any time.

Property of:  
THE TECHNICAL MATERIEL CORPORATION  
MAMARONECK, NEW YORK

ISSUE	ITEM	CHANGED FROM	DATE	CN. NO.	DRAFTS	CHECKER	ENG. APP.
C	1	ON B/M, IT. I. WAS ... 632-4	10-22-64	12717	J.P.	[Signature]	[Signature]
B	1	3" Dim on Bottom lip was 7 1/2"	10-26-60	3296	J.C.B.	[Signature]	[Signature]
A	2	"E" HOLES WERE 7/32 D.	9-6-60		[Signature]	[Signature]	[Signature]
A	1	ITEM 1 WAS SM-III-D206					

REQ. ITEM	PART NO.	DESCRIPTION	SYMBOL
4	NT-129-632-3	NUT, ROUND, SWAGE TYPE	
.051 THICK		THE TECHNICAL MATERIEL CORP.	
STOCK SIZE		MAMARONECK, NEW YORK	
ALUMINUM C70		CHASSIS, FRONT ELEMENT	
5052-H32		MODEL CFA	
TYPE & TEMPER		6-30-58	
C70		DRAWN [Signature]	
HEAT TREAT. SPEC.		ELEC. DES. APP. [Signature]	
TRIDITE S404		MESH. DES. APP. [Signature]	
FINISH & SPEC. NO.		CHECKED [Signature]	
		FINAL APPROVAL [Signature]	
		SUPERCEDES A-408 7/22/58	
		NO CHS.	
		MS-281 C	

REQ. PER UNIT	MODEL	PROJECT NO.	ASSY. NO.	DATE
1	CFA			6-30-58