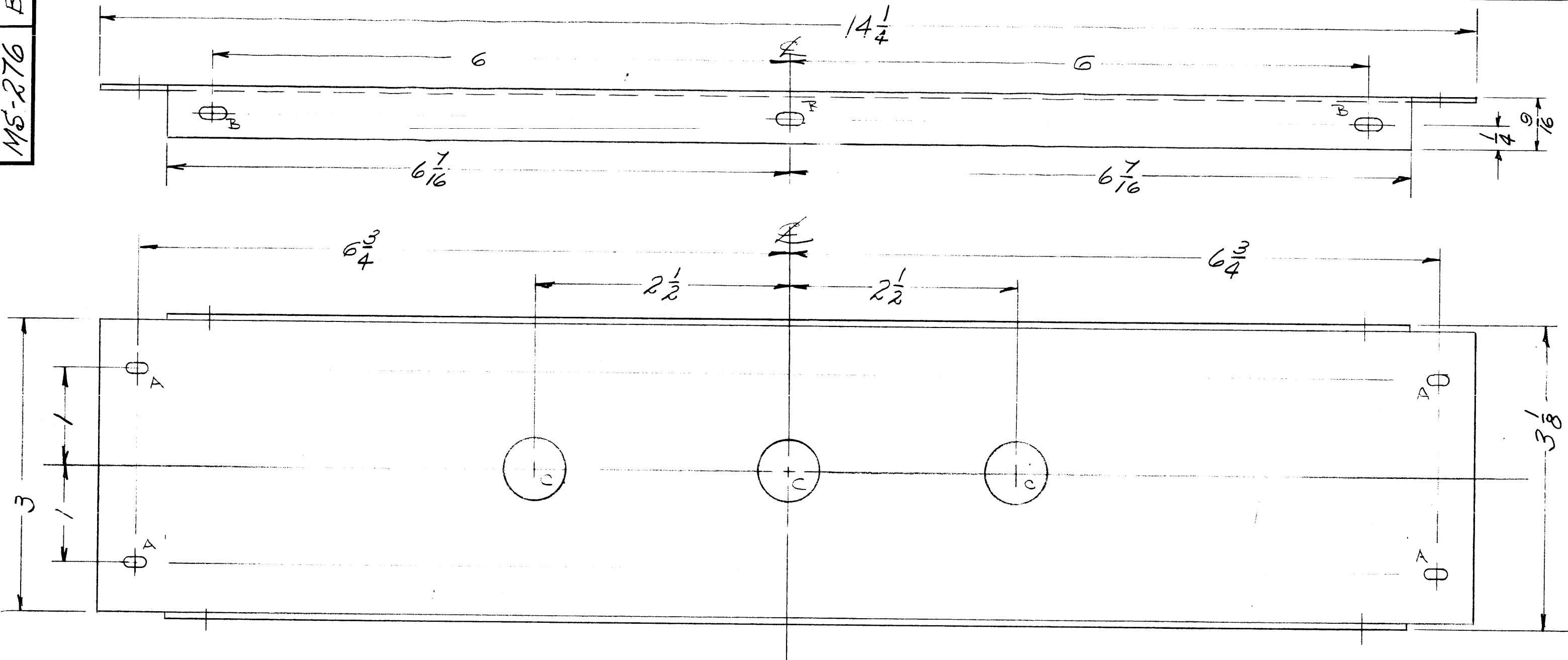


MS-276 B



HOLE LEGEND

- A - $\frac{11}{64} \times \frac{11}{32}$ SLOTS - 4 REQ.
- B - $\frac{13}{64} \times \frac{13}{32}$ SLOTS - 2 REQ.
- C - $5/8$ DIA. 3 REQ.

ISSUE	ITEM	CHAN ED FROM	DATE	CH. NO.	DRAFTS	CHECKER	ENG. APP.
B	1	Redrawn - NO Mech. Chg - Bents Added	7/1/58	1			

TOLERANCES

DEC. DIM. \pm

FRAC. DIM. $\pm \frac{1}{64}$

ANGULAR DIM. \pm

SCALE: $\frac{1}{16}$

MAXIMUM ALLOWABLE TOLERANCES HAVE BEEN DETERMINED AND ANY DEVIATIONS WILL BE CAUSE FOR REJECTION. REMOVE ALL BURRS AND SHARP EDGES

2	CFA				7-1-58
REQ. PER UNIT	MODEL	PR JECT NO.	ASS'Y. NO.	DATE	

USED ON

REQ. ITEM	PART NO.	DESCRIPTION	SYMBOL
	.052 THICK STOCK SIZE	THE TECHNICAL MATERIEL CORP. MAMARONECK, NEW YORK	
	5052-H32	SIDE COVER	
	MATERIAL	MODEL CFA	
	IRIDITE S404		
	FINISH & SPEC. NO.	ELEC. DES. APP.	MECH. DES. APP.