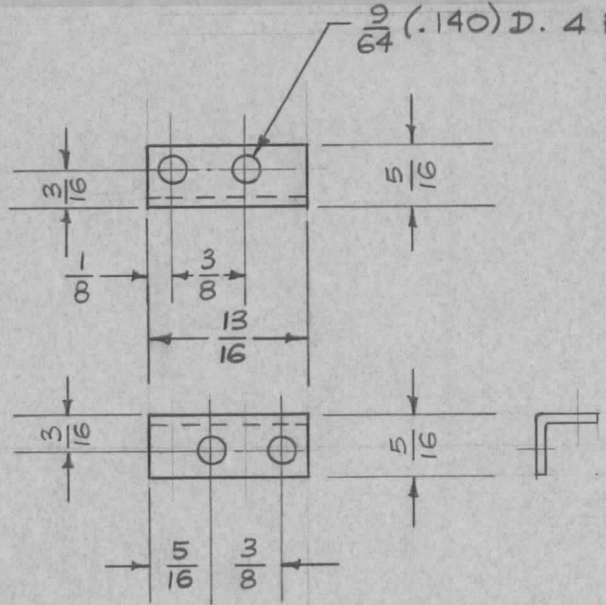


UNLESS OTHERWISE SPECIFIED DIMENSIONS ARE IN INCHES AND INCLUDE CHEMICALLY APPLIED OR PLATED FINISHES	
DECIMALS .X ± .05 .XX ± .01 .XXX ± .005	TOLERANCES FRACTIONS ± 1/64 ANGLES ± 0° 30'

CUT HERE  
GUARANTEED  
2-66

REQ. PER UNIT	USED ON	
	MODEL	ASS'Y. NO. DATE
1	CFA-1	12-14-56
1	CFA-L	12-14-56
1	CFA-1LB	12-14-56

MS-274 B



NOTE: THIS BRACKET MOUNTS TERMINAL BOARDS  
1A-400 AND 1A-401

BLANK SIZE - 17/32 x 1 1/4

ISSUE	ITEM	CHANGED FROM	DATE	CH. NO.	DRAFTS	CHECKER	ENG. APP.	REQ. ITEM	PART NO.	DESCRIPTION	SYMBOL				
									.051 THK.	THE TECHNICAL MATERIEL CORP. MAMARONECK. NEW YORK	BRACKET, OSC. TERMINAL BOARD				
									STOCK SIZE						
B	1	S404-IRIDITE S104-CAUSTIC DIP	12-7-59	1001	P		EMN.		ALUMINUM						
A	1	REDRAWN/HOLE POS. CHG'D	12-14-56	1	16	JMD	AM		MATERIAL						
TOLERANCES								SCALE: FULL		5052-H32	ff	16 12-14-56	JMD	AM	
DEC. DIM. ±			MAXIMUM ALLOWABLE TOLERANCES HAVE BEEN DETERMINED AND ANY DEVIATIONS WILL BE CAUSE FOR REJECTION.					TYPE & TEMPER		HEAT TREAT. SPEC.	DRAWN	CHECKED	FINAL APPROVAL		
FRAC. DIM. ± 1/64			REMOVE ALL BURRS AND SHARP EDGES					S-104-CAUSTIC DIP			SUPERCEDES AMS-253	12/17/54	MS-274 B		
ANGULAR DIM. ±								FINISH & SPEC. NO.		ELEC. DES. APP.	MECH. DES. APP.				